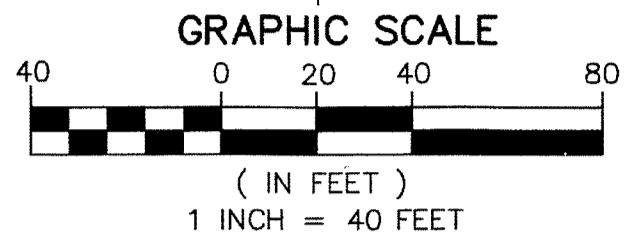


VILLAGGIO ISLES PARCEL D REPLAT

VILLAGGIO ISLES PUD, A PLANNED UNIT DEVELOPMENT
 BEING A REPLAT OF PARCEL D AND A PORTION OF TRACT R, VILLAGGIO ISLES PUD REPLAT,
 AS RECORDED PLAT BOOK 117, PAGES 102 THROUGH 109 OF THE PUBLIC RECORDS OF PALM BEACH COUNTY, FLORIDA
 LYING IN SECTION 16 TOWNSHIP 46 SOUTH, RANGE 42 EAST, PALM BEACH COUNTY, FLORIDA

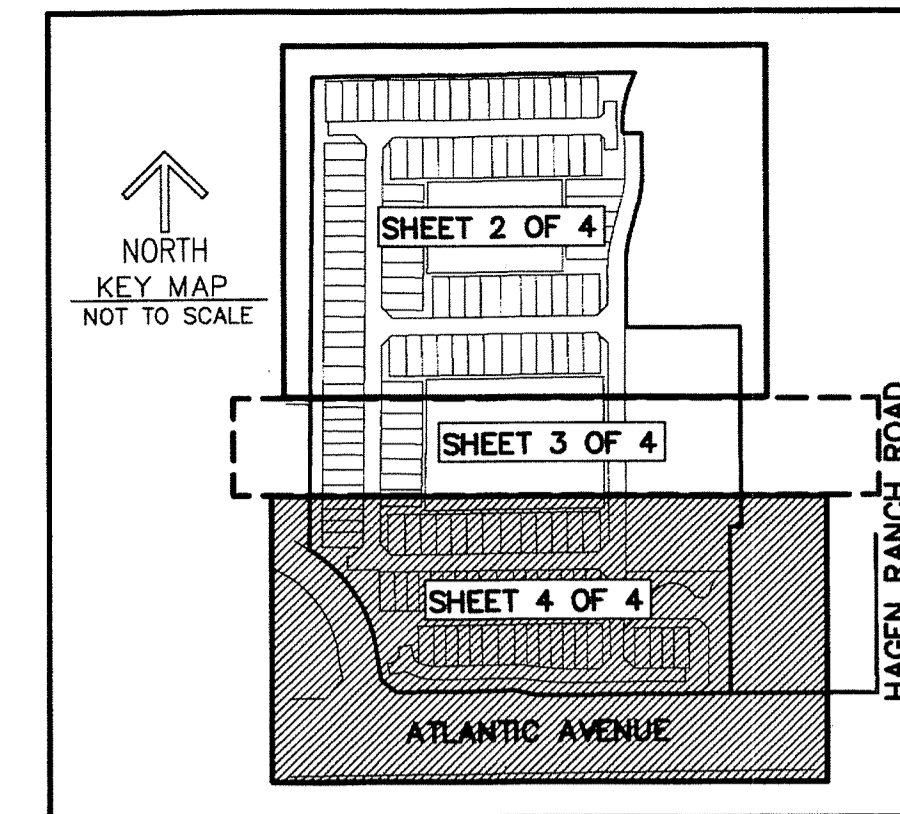
LEGEND/ABBREVIATIONS

- CENTERLINE
- Δ (CENTRAL ANGLE)
- ACCESS EASEMENT
- CB — CHORD BEARING
- CD — CHORD DISTANCE
- DE — DRAINAGE EASEMENT
- ARC LENGTH
- LAE — LIMITED ACCESS EASEMENT
- LB — LICENSED BUSINESS
- LMAE — LAKE MAINTENANCE ACCESS EASEMENT
- LME — LAKE MAINTENANCE EASEMENT
- MTE — MASS TRANSIT EASEMENT
- O.R.B. — OFFICIAL RECORD BOOK
- RADIUS
- PBCUE — PALM BEACH COUNTY UTILITY EASEMENT
- UTILITY EASEMENT
- (P) — DENOTES VILLAGGIO ISLES PUD REPLAT AS RECORDED IN PLAT BOOK 117, PAGE 102
- PRM — DENOTES PERMANENT REFERENCE MONUMENT 4" X 4" X 24" CONCRETE MONUMENT STAMPED LB3591 UNLESS OTHERWISE NOTED
- — DENOTES PERMANENT CONTROL POINT NAIL AND METAL DISK STAMPED LB3591
- ▲ — DENOTES PERMANENT REFERENCE MONUMENT NAIL AND DISC STAMPED "PRM" LB 3591



**NOTES
 COORDINATES, BEARINGS AND DISTANCES**

COORDINATES SHOWN ARE GRID
 DATUM = NAD 83 1990 ADJUSTMENT
 ZONE = FLORIDA EAST
 LINEAR UNIT = US SURVEY FEET
 COORDINATE SYSTEM 1983 STATE PLANE
 TRANSVERSE MERCATOR PROJECTION
 ALL DISTANCES ARE GROUND
 SCALE FACTOR = 1.0000265
 GROUND DISTANCE X SCALE FACTOR = GRID DISTANCE
 BEARINGS AS SHOWN HEREON ARE GRID DATUM,
 NAD 83 1990 ADJUSTMENT, FLORIDA EAST ZONE.



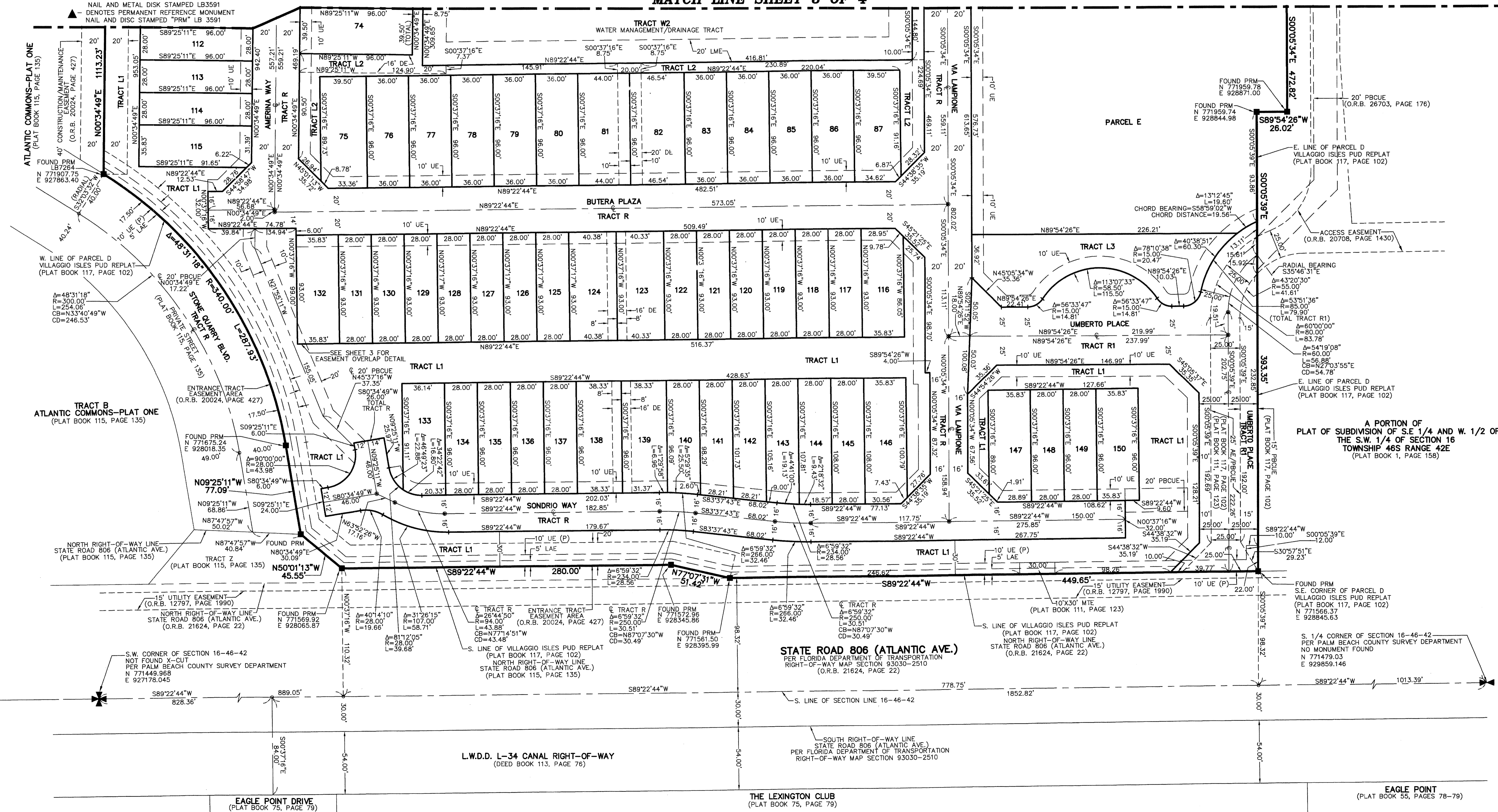
114

STATE OF FLORIDA
 COUNTY OF PALM BEACH
 THIS PLAT WAS FILED FOR
 RECORD AT _____ M.
 THIS _____ DAY OF _____
 A.D. 20____ AND DULY RECORDED
 IN PLAT BOOK _____ ON
 PAGES _____ AND _____

SHARON R. BOCK
 CLERK AND COMPTROLLER

BY: _____
 DEPUTY CLERK

MATCH LINE SHEET 3 OF 4



SHEET INDEX
 SHEET 1 - COVER
 SHEET 2 - MAP SHEET
 SHEET 3 - MAP SHEET/EASEMENT DETAILS
 SHEET 4 - MAP SHEET

SHEET 4 OF 4

A PORTION OF
 PLAT OF SUBDIVISION OF S.E. 1/4 AND W. 1/2 OF
 THE S.W. 1/4 OF SECTION 16
 TOWNSHIP 46S RANGE 42E
 (PLAT BOOK 1, PAGE 158)

STATE ROAD 806 (ATLANTIC AVE.)
 PER FLORIDA DEPARTMENT OF TRANSPORTATION
 RIGHT-OF-WAY MAP SECTION 93030-2510
 (O.R.B. 21624, PAGE 22)

L.W.D.D. L-34 CANAL RIGHT-OF-WAY
 (DEED BOOK 113, PAGE 76)

EAGLE POINT
 (PLAT BOOK 55, PAGES 78-79)

EAGLE POINT DRIVE
 (PLAT BOOK 75, PAGE 79)

THE LEXINGTON CLUB
 (PLAT BOOK 75, PAGE 79)