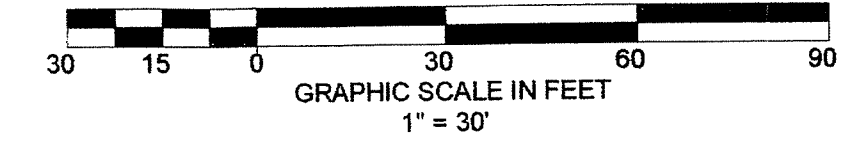


OCEAN BREEZE TOWNHOMES AT JUNO BEACH

LYING IN GOVERNMENT LOT 2, SECTION 21, TOWNSHIP 41 SOUTH,
RANGE 43 EAST, TOWN OF JUNO BEACH, PALM BEACH COUNTY, FLORIDA
JANUARY, 2015

116

NORTHWEST CORNER OF
SECTION 21, TOWNSHIP 41S, RANGE 43E
FOUND PALM BEACH COUNTY BRASS DISC



POINT OF COMMENCEMENT

N.W. CORNER GOVERNMENT LOT 2

NORTH LINE OF GOVERNMENT LOT 2, SECTION 21, TOWNSHIP 41 S, RANGE 43 E

JUNO OCEAN KEY
CONDOMINIUM
(PLAT BOOK 102, PAGE 17-18)

UNPLATTED

POINT OF BEGINNING

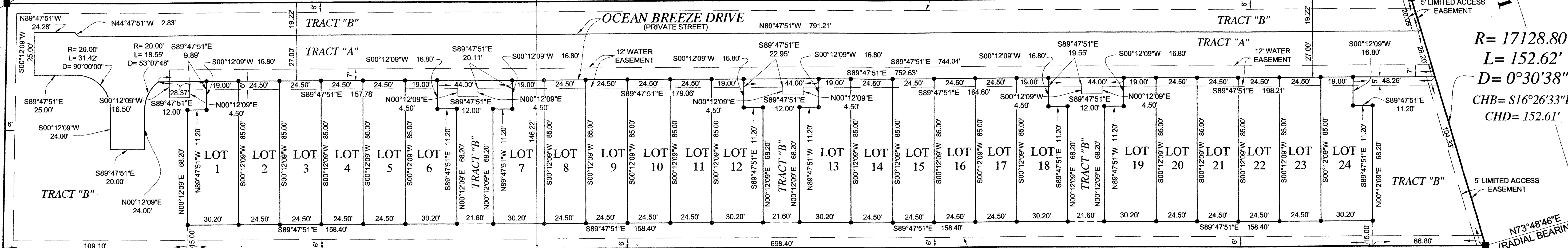
N89°47'51"W 827.94'

6" FP&L AND SOUTHERN BELL
EASEMENT
(O.R.B. 1043, PAGE 99)

U.S. HIGHWAY NO. 1
STATE ROAD 109
(ROAD PLAT BOOK 2, PAGE 109)

R= 17128.80'
L= 152.62'
D= 0°30'38"
CHB= S16°26'33"E
CHD= 152.61'

UNPLATTED
YOGI-BY-THE-SEA CONDOMINIUM
S01°14'24"W 146.24'



996.50'

WEST QUARTER CORNER OF
SECTION 21, TOWNSHIP 41S, RANGE 43E
FOUND PALM BEACH COUNTY BRASS DISC

- LEGEND**
- SET 4"x4" CONCRETE MONUMENT (P.R.M.)
LB# 2799
 - SET MAG NAIL & DISC (P.C.P.)
LB# 2799
 - SET 5/8" IRON ROD & CAP LB# 2799
(P.R.M. & TRACT CORNERS)
 - R RADIUS
 - D DELTA ANGLE
 - A ARC LENGTH
 - CHB CHORD BEARING
 - CHD CHORD DISTANCE
 - ID IDENTIFICATION NUMBER
 - TWP TOWNSHIP
 - RNG RANGE
 - O.R.B. OFFICIAL RECORD BOOK
 - CL CENTERLINE
 - PG PAGE
 - S.R. STATE ROAD
 - P.R.M. PERMANENT REFERENCE MONUMENT
 - P.C.P. PERMANENT CONTROL POINT

UNPLATTED

JUNO BEACH MOBILE HOME PARK
A CONDOMINIUM

6" FP&L AND SOUTHERN BELL
EASEMENT
(O.R.B. 1043, PAGE 99)

SHEET 2 OF 2

DAILEY
AND ASSOCIATES, INC.
Surveying and Mapping

112 N. U.S. Highway No. 1
Tequesta, FL 33469
Phone: (561) 746-8424
BUSINESS LICENSE: LB# 2799