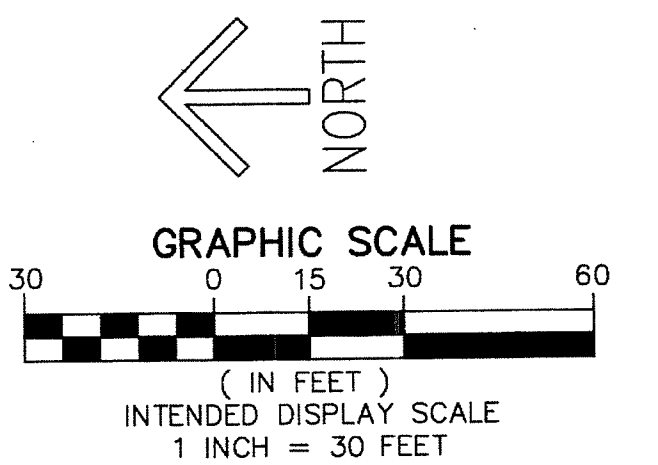
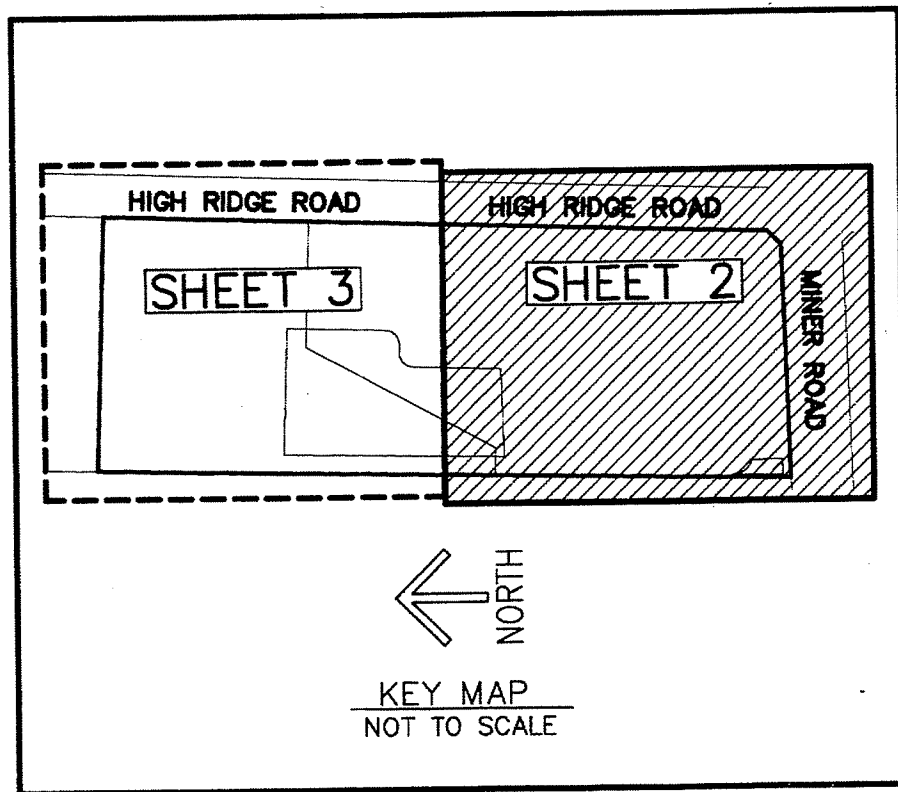
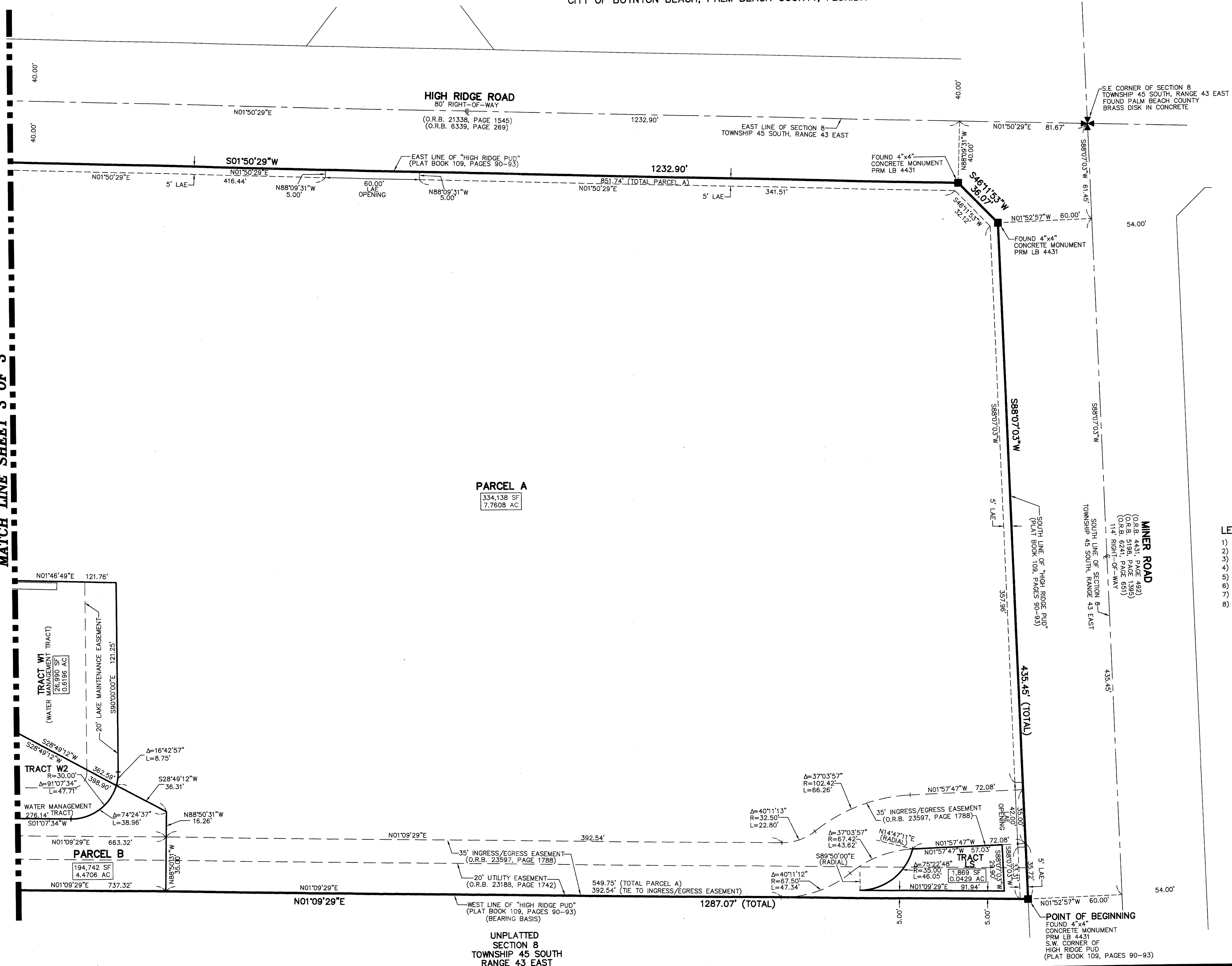


THIS INSTRUMENT PREPARED BY  
DAVID P. LINDLEY  
OF  
**CAULFIELD and WHEELER, INC.**  
SURVEYORS - ENGINEERS - PLANNERS  
7900 GLADES ROAD, SUITE 100  
BOCA RATON, FLORIDA 33434 - (561)392-1991  
SEPTEMBER - 2014

# HIGH RIDGE LANDING

BEING A REPLAT OF "HIGH RIDGE PUD", ACCORDING TO THE PLAT THEREOF,  
AS RECORDED IN PLAT BOOK 109, PAGES 90 THROUGH 93, LESS THAT PORTION REPLATTED AS IMAGINE CHARTER SCHOOL AT  
BOYNTON BEACH, ACCORDING TO THE PLAT THEREOF, AS RECORDED IN PLAT BOOK 112, PAGES 186 AND 187 ALL OF THE  
PUBLIC RECORDS OF PALM BEACH COUNTY, FLORIDA,  
LYING IN SECTION 8, TOWNSHIP 45 SOUTH, RANGE 43 EAST,  
CITY OF BOYNTON BEACH, PALM BEACH COUNTY, FLORIDA

MATCH LINE SHEET 3 OF 3



- LEGEND/ABBREVIATIONS
- 1) AC - DENOTES ACRES
  - 2) LAE - DENOTES LIMITED ACCESS EASEMENT
  - 3) O.R.B. - DENOTES OFFICIAL RECORD BOOK
  - 4) SF - DENOTES SQUARE FEET
  - 5) Δ - DELTA (CENTRAL ANGLE)
  - 6) L - ARC LENGTH
  - 7) R - RADIUS
  - 8) ■ PRM - INDICATES SET 4" X 4" X 24" CONCRETE PERMANENT REFERENCE MONUMENT WITH ALUMINUM DISK STAMPED "CANDW PRM LB3591"