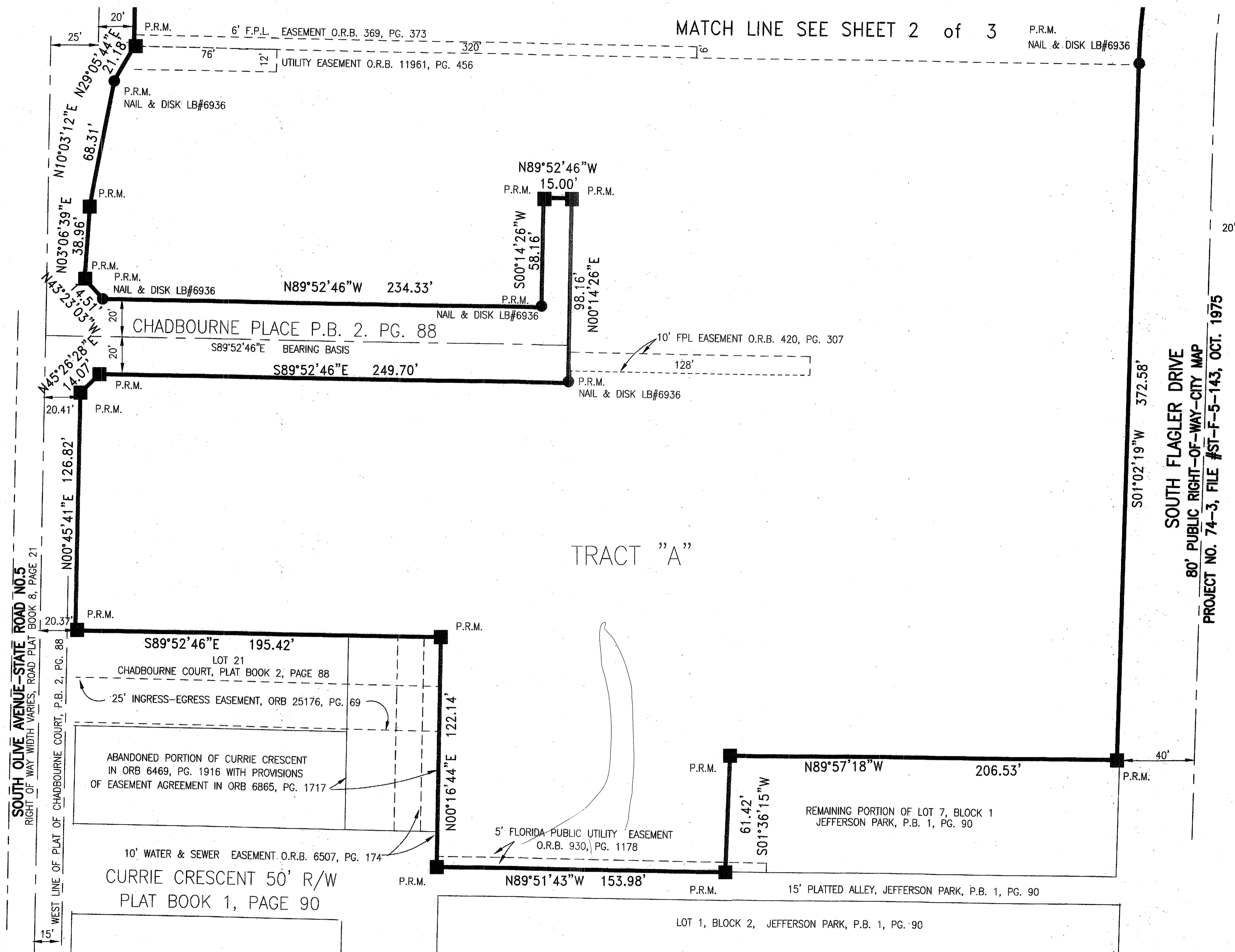


FIRST BAPTIST CHURCH OF WEST PALM BEACH

LYING IN SECTION 27, TOWNSHIP 43 SOUTH, RANGE 43 EAST
 CITY OF WEST PALM BEACH, PALM BEACH COUNTY, FLORIDA
 BEING A REPLAT OF A PORTION OF CHADBOURNE COURT RECORDED IN PLAT BOOK 2, PAGE 88
 AND A PORTION OF JEFFERSON PARK RECORDED IN PLAT BOOK 1, PAGE 90 OF THE
 PUBLIC RECORDS OF PALM BEACH COUNTY, FLORIDA.
 JANUARY, 2015 SHEET 3 OF 3

137

State of Florida
 County of Palm Beach
 This Plat was filed for
 Record this _____ Day
 of _____ A.D. 2014
 and duly recorded in
 Plat Book _____ on
 Page _____
 Sharon Back, Clerk & Comptroller
 by: _____ D.C.
 Seal of Clerk & Comptroller



MATCH LINE SEE SHEET 2 of 3

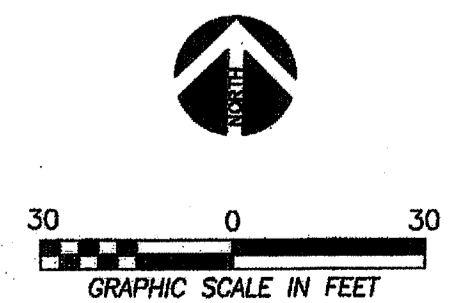
AGREEMENT FOR EASEMENT
 O.R.B. 2021, PG. 64 &
 O.R.B. 2493, PG. 1614

SURVEYOR'S NOTES:

- BEARINGS AS SHOWN HEREON ARE BASED UPON THE CENTERLINE OF CHADBOURNE PLACE WHICH IS ASSUMED TO BEAR S89°52'46"E.
- DISTANCES ARE EXPRESSED IN FEET AND DECIMAL PARTS THEREOF BASED UPON UNITED STATES SURVEY FOOT.
- THIS PLAT, AS DEPICTED IN ITS GRAPHIC FORM, IS THE OFFICIAL DEPICTION OF THE LANDS AS DESCRIBED HEREIN AND WILL IN NO CIRCUMSTANCES BE SUPPLANTED IN AUTHORITY BY ANY OTHER GRAPHIC OR DIGITAL FORM OF THE PLAT. THERE MAY BE ADDITIONAL RESTRICTIONS THAT ARE NOT RECORDED ON THIS PLAT THAT MAY BE FOUND IN THE PUBLIC RECORDS OF PALM BEACH COUNTY, FLORIDA.
- NO BUILDINGS OR ANY KIND OF CONSTRUCTION OR TREES OR SHRUBS SHALL BE PLACED ON ANY EASEMENT WITHOUT PRIOR WRITTEN APPROVAL OF ALL EASEMENT BENEFICIARIES AND ALL APPLICABLE CITY APPROVALS OR PERMITS AS REQUIRED FOR SUCH IMPROVEMENTS.
- IN THOSE CASES WHERE EASEMENTS OF DIFFERENT TYPES CROSS OR OTHERWISE COINCIDE, DRAINAGE EASEMENTS SHALL HAVE FIRST PRIORITY, UTILITY EASEMENTS SHALL HAVE SECOND PRIORITY, ACCESS EASEMENTS SHALL HAVE THIRD PRIORITY AND ALL OTHER EASEMENTS SHALL BE SUBORDINATE TO THESE WITH THEIR PRIORITIES BEING DETERMINED BY USE RIGHTS GRANTED.

LEGEND

- PRM ■ INDICATES PERMANENT REFERENCE MONUMENT LB#6936
- PRM ● INDICATES NAIL & DISK LB#6936 SET IN CONCRETE
- ⊕ INDICATES CENTER LINE
- P.O.B. INDICATES POINT OF BEGINNING
- R/W INDICATES RIGHT OF WAY
- P.O.B. INDICATES CENTER LINE
- P.B. INDICATES PLAT BOOK
- PG. INDICATES PAGE
- Δ INDICATES DELTA
- R INDICATES RADIUS
- A INDICATES ARC LENGTH



Dean Surveying and Mapping, Inc.
 "The Measuring Line Shall Go Forth" Jeremiah 31:39
 4201 Wengate Avenue
 Suite A3
 West Palm Beach, Florida 33409
 Tel: (561) 925-8748 Fax: (561) 925-4538
 FIELD: N/A DATE: OCTOBER 2014
 DRAWN: D.J.M./C.A.D. SCALE: 1" = 30'
 SHEET: 3 of 3 JOB No.: 012-1208