

# LUCENTE

BEING A REPLAT OF A PORTION OF LOTS 1 THROUGH 5 AND LOTS 11 THROUGH 20, BLOCK 20, THE PALM BEACH FARMS COMPANY PLAT NO. 2, THE TOWNSITE OF LUCERNE, ACCORDING OF THE PLAT THEREOF, RECORDED IN PLAT BOOK 2, AT PAGE 29, OF THE PUBLIC RECORDS OF PALM BEACH COUNTY, FLORIDA. SAID LANDS LYING AND SITUATE IN SECTION 21, TOWNSHIP 44 SOUTH, RANGE 43 EAST, PALM BEACH COUNTY, FLORIDA.

145

State of Florida }  
County of Palm Beach } SS

THIS PLAT WAS FILED FOR RECORD AT \_\_\_\_\_ M.

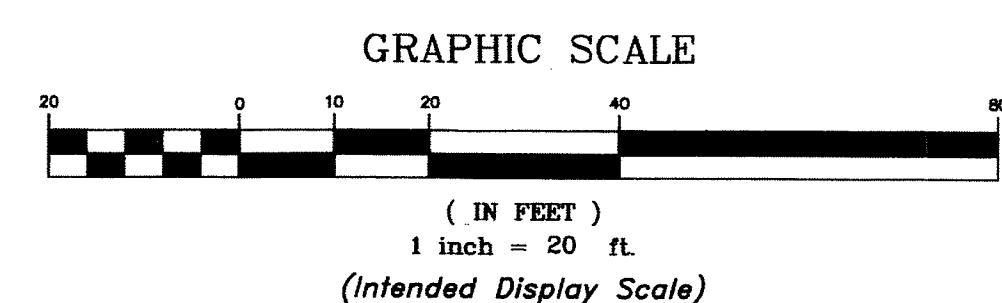
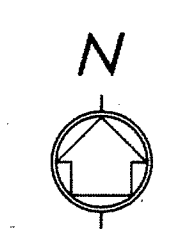
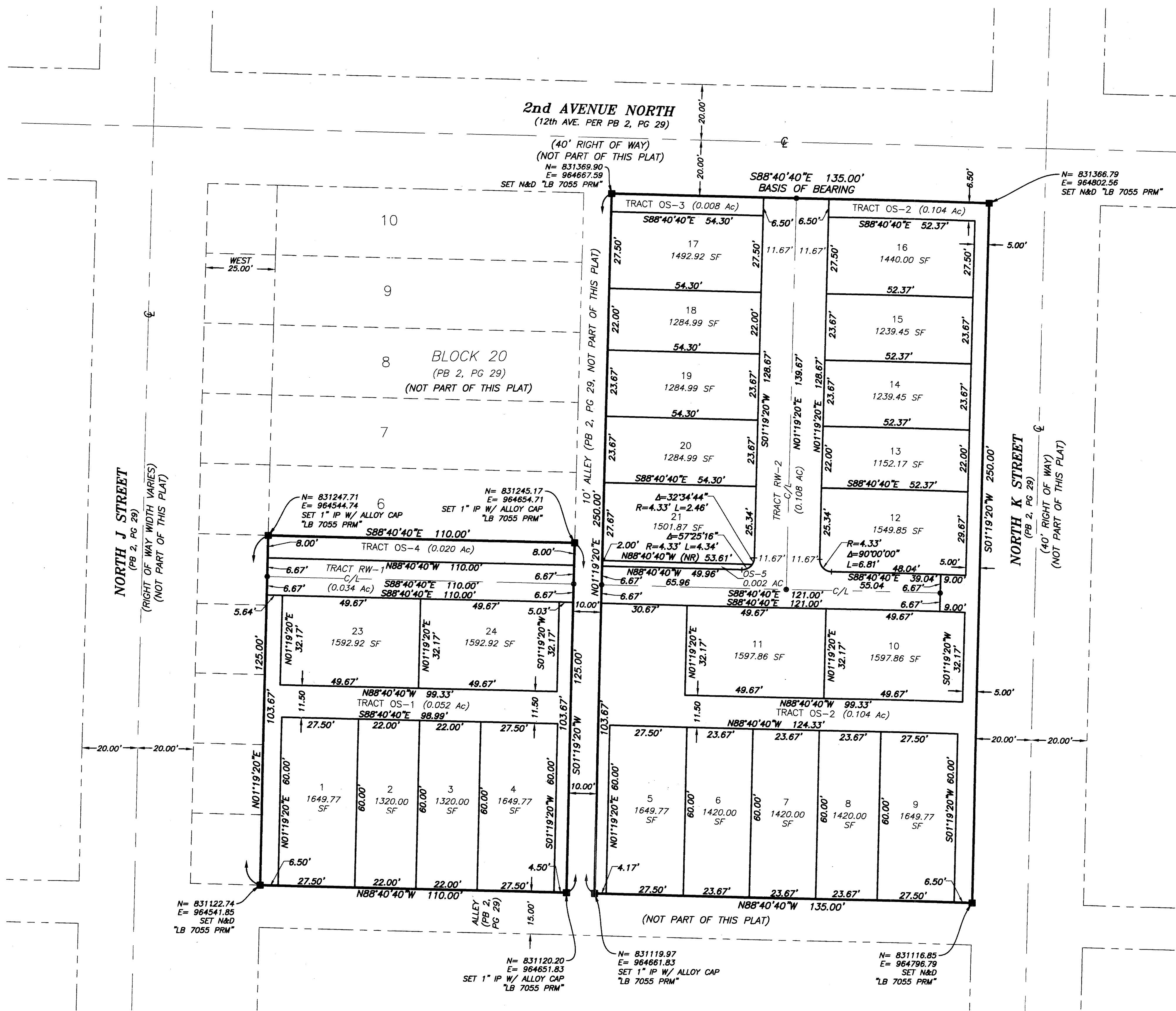
THIS \_\_\_\_\_ DAY OF \_\_\_\_\_ A.D. 2015 AND DULY RECORDED

IN PLAT BOOK \_\_\_\_\_ THROUGH \_\_\_\_\_ ON \_\_\_\_\_ PAGES \_\_\_\_\_ THROUGH \_\_\_\_\_

SHARON R. BOCK  
CLERK AND COMPTROLLER

BY: \_\_\_\_\_  
DEPUTY CLERK

SHEET 2 OF 2 SHEETS



### LEGEND:

- AC = Acres
- C/L = Center Line
- Δ = Delta (Central Angle)
- L = Length of Arc
- LB = Licensed Business
- (NR) = Non-Radial
- PG. = Page
- PBC = Palm Beach County
- PB = Plat Book
- PRM = Permanent Reference Monument
- ⊙ = Permanent Control Point (PCP)
- R = Radius
- SF = Square Feet
- IP = Iron Pipe
- N&D = Nail and Disk
- = Set PRM Monument, Size and Material as Noted Stamped "LB 7055 PRM"

NOTE: Lot lines intersecting circular curves are radial unless otherwise noted.



Engineering ♦ Planning ♦ Surveying ♦ Environmental  
2035 VISTA PARKWAY, SUITE 100, WEST PALM BEACH, FL 33411  
(866) 909-2220 phone (561) 687-1110 fax  
CERTIFICATE OF AUTHORIZATION No. LB 7055  
ORLANDO - PORT ST. LUCIE - TAMPA  
THIS INSTRUMENT WAS PREPARED BY ERIC R. MATTHEWS, P.S.M.  
PROFESSIONAL SURVEYOR AND MAPPER LICENSE NO. 6717  
FOR THE FIRM: WANTMAN GROUP, INC.