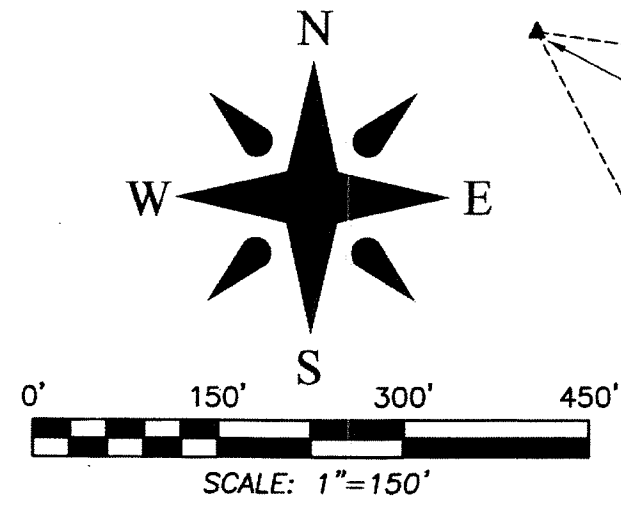


0305016



**BEARING ROTATION EQUATION:**  
 00°00'03" COUNTER CLOCKWISE ROTATION  
 FROM 1972 ADJUSTMENT (PLAT)  
 TO NAD 83/90 ADJUSTMENT

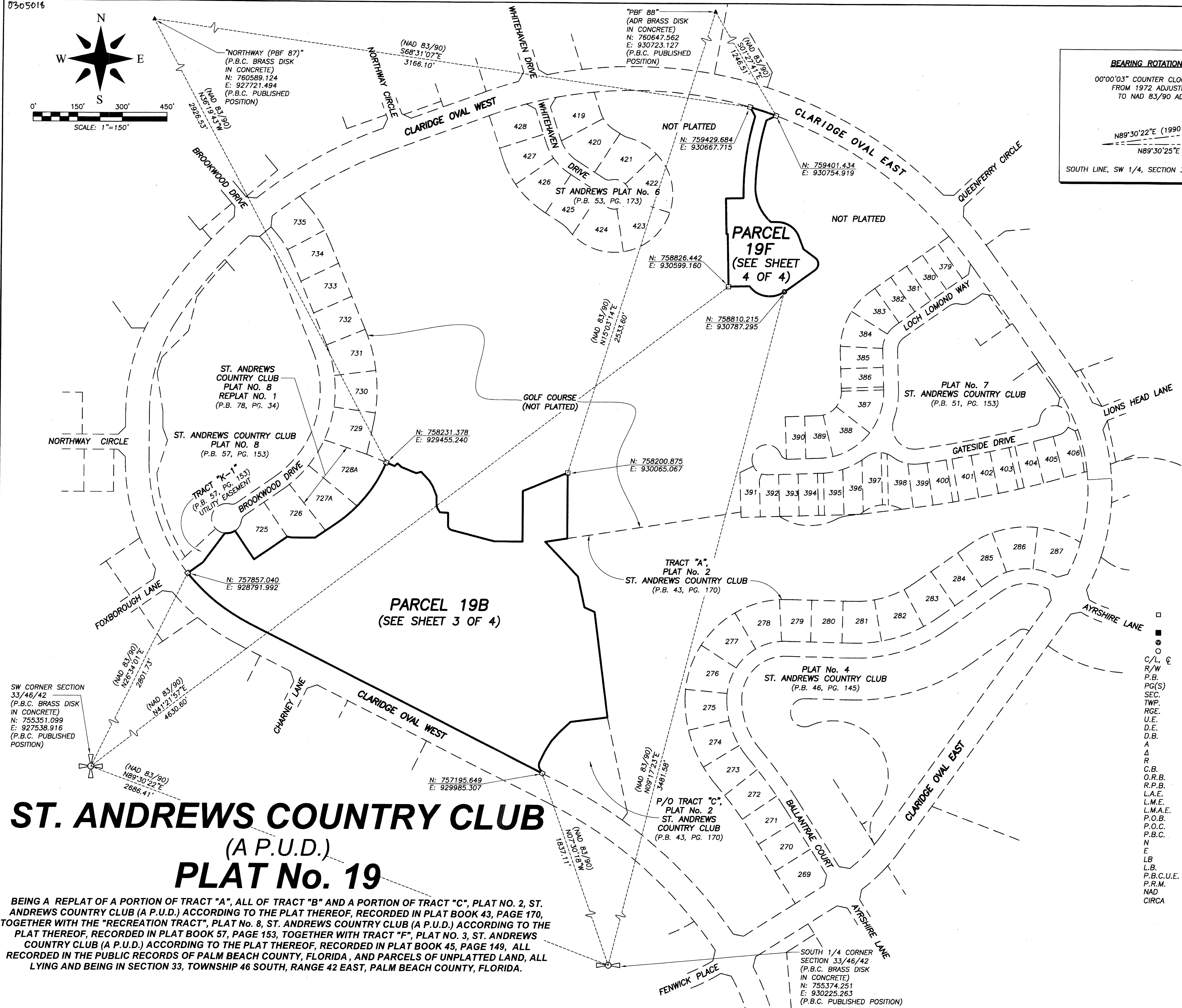
N89°30'22"E (1990 ADJUSTMENT)  
 N89°30'25"E (PLAT)

SOUTH LINE, SW 1/4, SECTION 33/46/42

161

SHEET 2 OF 4

# KEY MAP & HORIZONTAL CONTROL TIES



## ST. ANDREWS COUNTRY CLUB (A P.U.D.) PLAT No. 19

BEING A REPLAT OF A PORTION OF TRACT "A", ALL OF TRACT "B" AND A PORTION OF TRACT "C", PLAT NO. 2, ST. ANDREWS COUNTRY CLUB (A P.U.D.) ACCORDING TO THE PLAT THEREOF, RECORDED IN PLAT BOOK 43, PAGE 170, TOGETHER WITH THE "RECREATION TRACT", PLAT No. 8, ST. ANDREWS COUNTRY CLUB (A P.U.D.) ACCORDING TO THE PLAT THEREOF, RECORDED IN PLAT BOOK 57, PAGE 153, TOGETHER WITH TRACT "F", PLAT NO. 3, ST. ANDREWS COUNTRY CLUB (A P.U.D.) ACCORDING TO THE PLAT THEREOF, RECORDED IN PLAT BOOK 45, PAGE 149, ALL RECORDED IN THE PUBLIC RECORDS OF PALM BEACH COUNTY, FLORIDA, AND PARCELS OF UNPLATTED LAND, ALL LYING AND BEING IN SECTION 33, TOWNSHIP 46 SOUTH, RANGE 42 EAST, PALM BEACH COUNTY, FLORIDA.

- ABBREVIATIONS AND SYMBOLS**
- = SET 4"x4" CONCRETE MONUMENT WITH DISK STAMPED "P.R.M. LB 4569"
  - = CONCRETE MONUMENT FOUND (AS NOTED ON MAP)
  - ⊙ = SET MAG NAIL & DISK STAMPED "P.R.M. LB 4569"
  - = SET 5/8" IRON ROD & CAP STAMPED "WALLACE LB 4569"
  - C/L, C = CENTERLINE
  - R/W = RIGHT OF WAY
  - P.B. = PLAT BOOK
  - PG(S) = PAGES
  - SEC. = SECTION
  - TWP. = TOWNSHIP
  - RGE. = RANGE
  - U.E. = UTILITY EASEMENT
  - D.E. = DRAINAGE EASEMENT
  - D.B. = DEED BOOK
  - A = ARC LENGTH
  - ∠ = CENTRAL ANGLE
  - R = RADIUS
  - C.B. = CHORD BEARING
  - O.R.B. = OFFICIAL RECORDS BOOK
  - R.P.B. = ROAD PLAT BOOK
  - L.A.E. = LIMITED ACCESS EASEMENT
  - L.M.E. = LAKE MAINTENANCE EASEMENT
  - L.M.A.E. = LAKE MAINTENANCE ACCESS EASEMENT
  - P.O.B. = POINT OF BEGINNING
  - P.O.C. = POINT OF COMMENCEMENT
  - P.B.C. = PALM BEACH COUNTY
  - N = NORTHING
  - E = EASTING
  - LB = LICENSED BUSINESS
  - L.B. = LANDSCAPE BUFFER
  - P.B.C.U.E. = PALM BEACH COUNTY UTILITY EASEMENT
  - P.R.M. = PERMANENT REFERENCE MONUMENT
  - NAD = NORTH AMERICAN DATUM
  - CIRCA = IS A PREPOSITION MEANING "IN APPROXIMATELY" OR "AROUND"



FIELD:	JOB No.: 87-1151.25	F.B.	PG
OFFICE: R.C.	DATE: AUGUST 2013	DWG. No.:	87-1151-10
C'KD.:	REF.:	SHEET:	2 OF 4