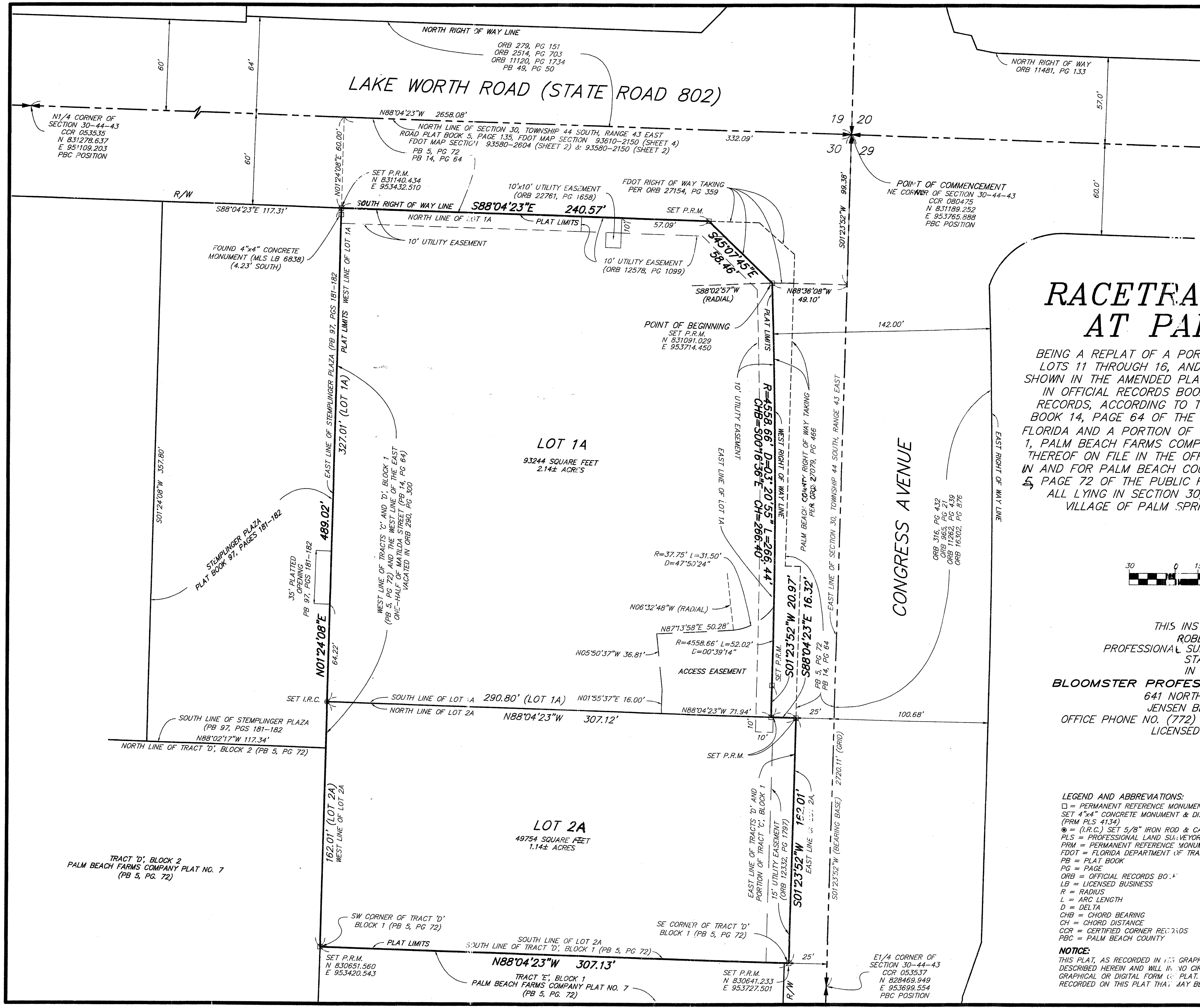


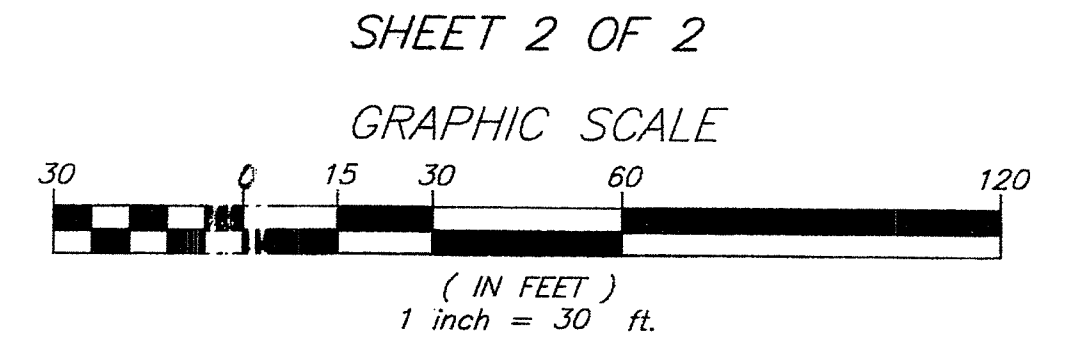
170

STATE OF FLORIDA
COUNTY OF PALM BEACH
THIS PLAT WAS FILED FOR
RECORD AT _____, THIS
_____ DAY OF _____
2015, AND DULY RECORDED IN
PLAT BOOK _____, PAGE _____
SHARON R. BOCK
CLERK AND COMPTROLLER
BY: _____ D.C.



RACETRAC PETROLEUM AT PALM SPRINGS

BEING A REPLAT OF A PORTION OF LOTS 1 - 10, INCLUSIVE, ALL OF LOTS 11 THROUGH 16, AND THE EAST HALF OF MATILDA STREET AS SHOWN IN THE AMENDED PLAT OF LAKE AVENUE GARDENS AND VACATED IN OFFICIAL RECORDS BOOK 290, PAGE 300, PALM BEACH COUNTY RECORDS, ACCORDING TO THE PLAT THEREOF AS RECORDED IN PLAT BOOK 14, PAGE 64 OF THE PUBLIC RECORDS OF PALM BEACH COUNTY, FLORIDA AND A PORTION OF TRACT 'C' AND ALL OF TRACT 'D' OF BLOCK 1, PALM BEACH FARMS COMPANY PLAT NO. 7, ACCORDING TO THE PLAT THEREOF ON FILE IN THE OFFICE OF THE CLERK OF THE CIRCUIT COURT IN AND FOR PALM BEACH COUNTY, FLORIDA AS RECORDED IN PLAT BOOK 5, PAGE 72 OF THE PUBLIC RECORDS OF PALM BEACH COUNTY, FLORIDA. ALL LYING IN SECTION 30, TOWNSHIP 44 SOUTH, RANGE 43 EAST VILLAGE OF PALM SPRINGS, PALM BEACH COUNTY, FLORIDA.



SHEET 2 OF 2
GRAPHIC SCALE
THIS INSTRUMENT PREPARED BY
ROBERT BLOOMSTER JR.
PROFESSIONAL SURVEYOR AND MAPPER NO. 4134
STATE OF FLORIDA
IN THE OFFICE OF
BLOOMSTER PROFESSIONAL LAND SURVEYORS, INC.
641 NORTHEAST SPENCER STREET
JENSEN BEACH, FLORIDA 34957
OFFICE PHONE NO. (772) 334-0868 - FAX NO. (772) 334-5283
LICENSED BUSINESS NO. 6018

LEGEND AND ABBREVIATIONS:
□ = PERMANENT REFERENCE MONUMENT,
SET 4"x4" CONCRETE MONUMENT & DISC
(PRM PLS 4134)
⊙ = (I.R.C.) SET 5/8" IRON ROD & CAP (LB 6018)
PLS = PROFESSIONAL LAND SURVEYOR
PRM = PERMANENT REFERENCE MONUMENT
FDOT = FLORIDA DEPARTMENT OF TRANSPORTATION
PB = PLAT BOOK
PG = PAGE
ORB = OFFICIAL RECORDS BOOK
LB = LICENSED BUSINESS
R = RADIUS
L = ARC LENGTH
D = DELTA
CHB = CHORD BEARING
CH = CHORD DISTANCE
CCR = CERTIFIED CORNER RECORDS
PBC = PALM BEACH COUNTY

NOTICE:
THIS PLAT, AS RECORDED IN THIS GRAPHIC FORM, IS THE OFFICIAL DEPICTION OF THE SUBDIVIDED LANDS DESCRIBED HEREIN AND WILL IN NO CIRCUMSTANCES BE SUPPLANTED IN AUTHORITY BY ANY OTHER GRAPHICAL OR DIGITAL FORM OR PLAT. THERE MAY BE ADDITIONAL RESTRICTIONS THAT ARE NOT RECORDED ON THIS PLAT THAT MAY BE FOUND IN THE PUBLIC RECORDS OF THIS COUNTY.