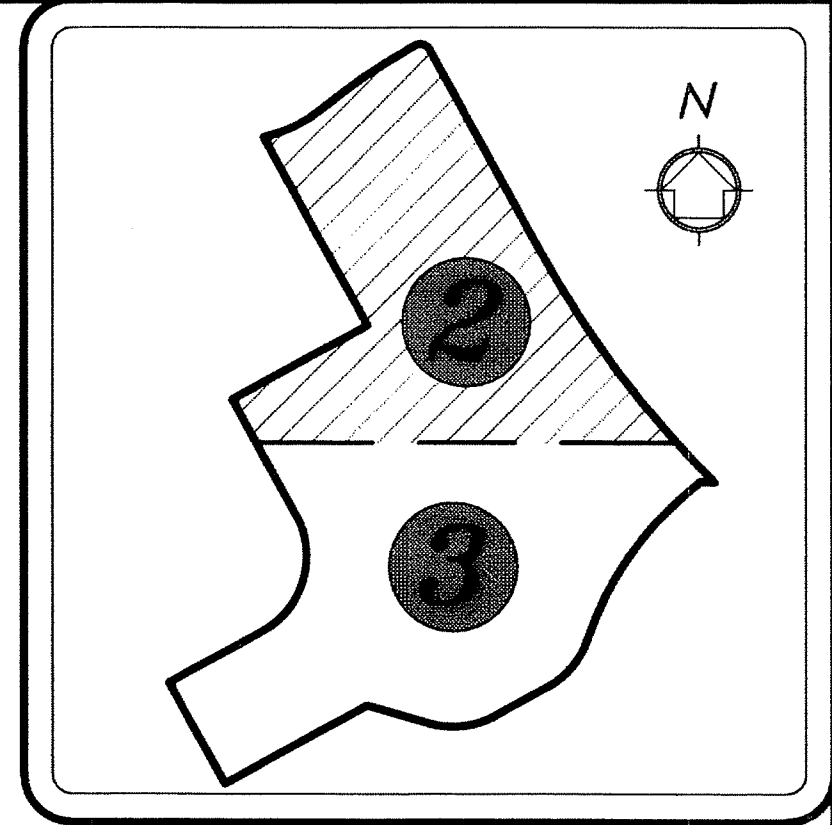
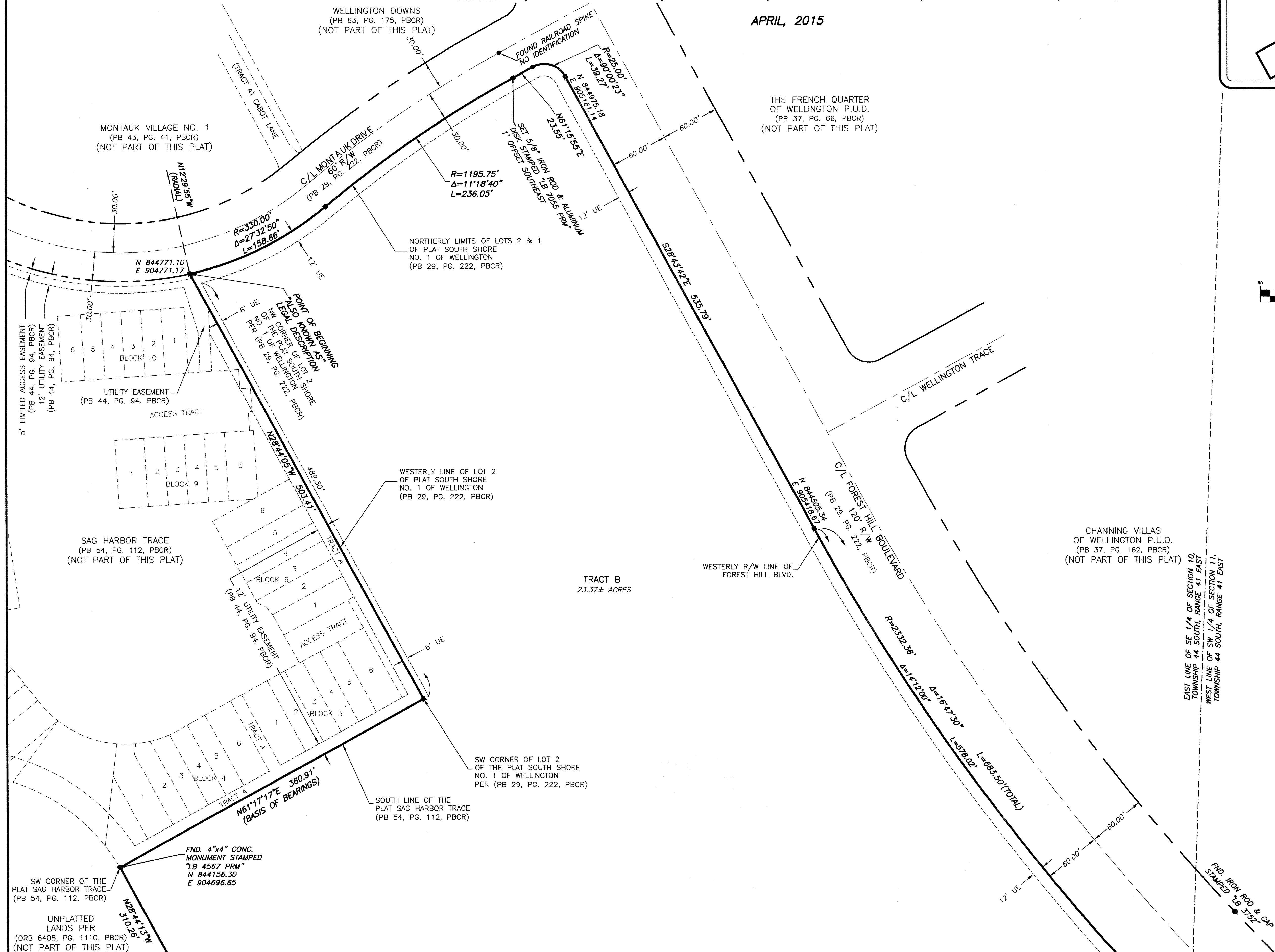


VILLAGE OF WELLINGTON TOWN CENTER

A REPLAT OF LOTS 1 AND 2, BLOCK 15, SOUTH SHORE NO. 1 OF WELLINGTON, ACCORDING TO THE PLAT THEREOF, AS RECORDED IN PLAT BOOK 29, AT PAGE 222, TOGETHER WITH THE LANDS DESCRIBED IN OFFICIAL RECORDS BOOK 10868, AT PAGE 1646, AND THE LANDS DESCRIBED IN OFFICIAL RECORDS BOOK 26535, AT PAGE 1533, ALL BEING OF THE PUBLIC RECORDS OF PALM BEACH COUNTY, FLORIDA, SAID LANDS LYING AND SITUATE IN A PORTION OF THE SOUTHEAST ONE-QUARTER (SE 1/4) OF SECTION 10, A PORTION OF THE SOUTHWEST ONE-QUARTER (SW 1/4) SECTION 11, AND A PORTION OF THE NORTHEAST ONE-QUARTER (NE 1/4) SECTION 15, TOWNSHIP 44 SOUTH, RANGE 41 EAST, VILLAGE OF WELLINGTON, PALM BEACH COUNTY, FLORIDA,

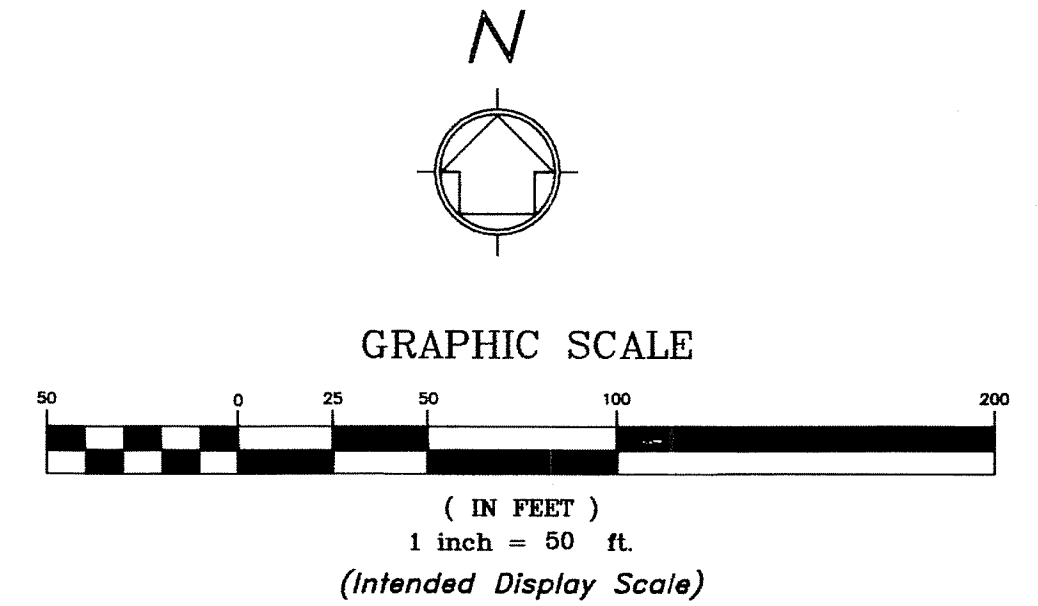
APRIL, 2015



KEYMAP MAP
(NOT TO SCALE)

172
 State of Florida }
 County of Palm Beach } SS
 THIS PLAT WAS FILED FOR RECORD AT _____ M.
 THIS _____ DAY OF _____ A.D. 2015 AND DULY RECORDED
 IN PLAT BOOK _____ ON PAGES _____ THROUGH _____
 SHARON R. BOCK
 CLERK AND COMPTROLLER
 BY: _____
 DEPUTY CLERK

SHEET 2 OF 3 SHEETS



LEGEND:

- CB = Chord Bearing
- CD = Chord Distance
- C/L = Centerline
- Conc. = Concrete
- Δ = Delta
- FND. = Found
- L = Length
- LB = Licensed Business
- ORB = ORB
- PG = Page
- PB = Plat Book
- PBCR = Palm Beach County Records
- PRM = Permanent Reference Monument
- = Permanent Control Point (PCP)
- R = Radius
- R/W = Right of Way
- = Set Nail & Brass Disc Stamped "LB 7055 PRM" unless noted
- = Set 5/8" Iron Rod & Aluminum Disc Stamped "LB 7055 PRM" unless noted
- = Sheet Number
- UE = Utility Easement

EAST LINE OF SE 1/4 OF SECTION 10, TOWNSHIP 44 SOUTH, RANGE 41 EAST
 WEST LINE OF SW 1/4 OF SECTION 11, TOWNSHIP 44 SOUTH, RANGE 41 EAST

MATCH SEE SHEET 3

WGI
 Wantman Group, Inc.
 Engineering ♦ Planning ♦ Surveying ♦ Environmental
 2035 VISTA PARKWAY, SUITE 100, WEST PALM BEACH, FL 33411
 (888) 909-2220 phone (561) 687-1110 fax
 CERTIFICATE OF AUTHORIZATION No. LB 7055
 ORLANDO - PORT ST. LUCIE - TAMPA
 THIS INSTRUMENT WAS PREPARED BY ERIC R. MATTHEWS, P.S.M.
 PROFESSIONAL SURVEYOR AND MAPPER, LICENSE NO. 6717
 FOR THE FIRM: WANTMAN GROUP, INC.