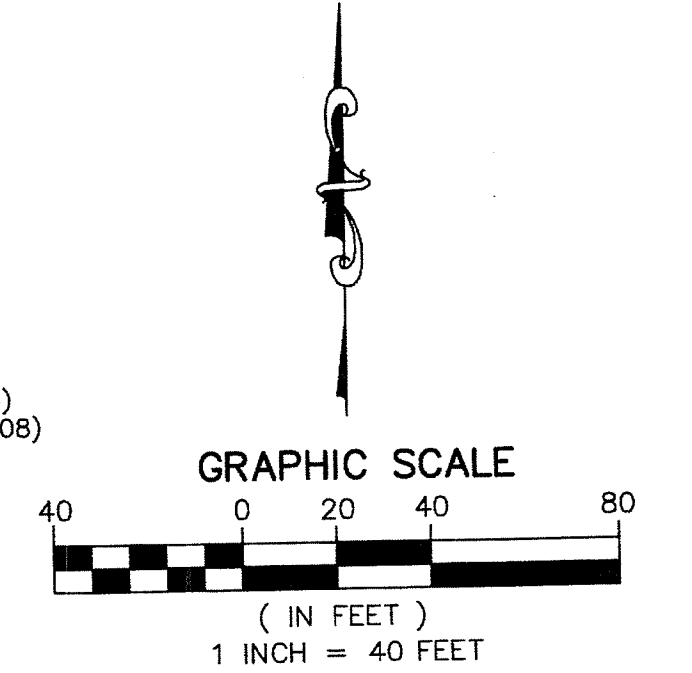
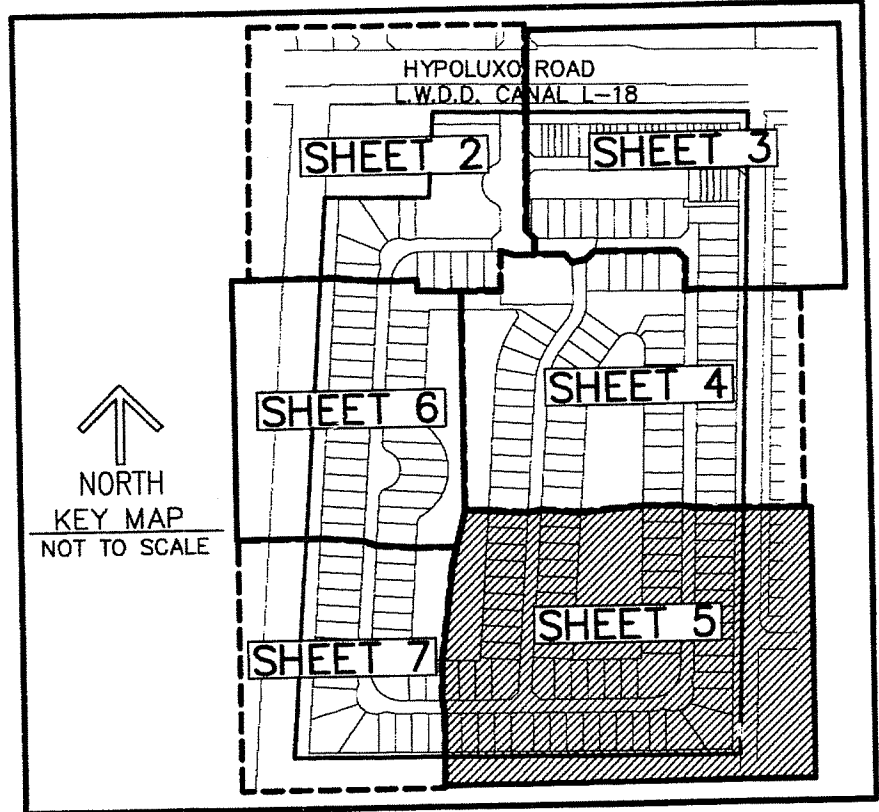


STATE OF FLORIDA
COUNTY OF PALM BEACH
THIS PLAT WAS FILED FOR
RECORD AT _____ M.
THIS _____ DAY OF _____
A.D. 20____ AND DULY RECORDED
IN PLAT BOOK _____ ON
PAGES _____ AND _____

SHARON R. BOCK
CLERK AND COMPTROLLER

BY: _____
DEPUTY CLERK

SHEET 5 OF 7



NOTES
COORDINATES, BEARINGS AND DISTANCES
COORDINATES SHOWN ARE GRID
DATUM = NAD 83 1990 ADJUSTMENT
ZONE = FLORIDA EAST
LINEAR UNIT = US SURVEY FEET
COORDINATE SYSTEM 1983 STATE PLANE
TRANSVERSE MERCATOR PROJECTION
ALL DISTANCES ARE GROUND
SCALE FACTOR = 1.0000340
GROUND DISTANCE X SCALE FACTOR = GRID DISTANCE
BEARINGS AS SHOWN HEREON ARE GRID DATUM,
NAD 83 1990 ADJUSTMENT, FLORIDA EAST ZONE.

LEGEND/ABBREVIATIONS
C - CENTERLINE
Δ - DELTA (CENTRAL ANGLE)
BDE - BUFFER DRAINAGE EASEMENT
DE - DRAINAGE EASEMENT
E - EASTING
FPL - FLORIDA POWER & LIGHT CO.
L - ARC LENGTH
LAE - LIMITED ACCESS EASEMENT
LB - LICENSED BUSINESS
LMAE - LAKE MAINTENANCE ACCESS EASEMENT
LME - LAKE MAINTENANCE EASEMENT
LSE - LIFT STATION EASEMENT
L.W.D.D. - LAKE WORTH DRAINAGE DISTRICT
N - NORTHING
OHME - OVERHANG/MAINTENANCE EASEMENT
O.R.B. - OFFICIAL RECORD BOOK
R - RADIUS
(R) - INDICATES RADIAL LINE
SWE - DENOTES SIDEWALK EASEMENT
UE - UTILITY EASEMENT
- - - INDICATES "ZERO" SIDE OF LOT LINE
PRM - DENOTES PERMANENT REFERENCE MONUMENT
4" x 4" x 24" CONCRETE MONUMENT WITH
ALUMINUM DISK STAMPED "C&W PRM LB3591"
PCP - DENOTES PERMANENT CONTROL POINT
NAIL AND METAL DISK STAMPED "PCP LB3591"

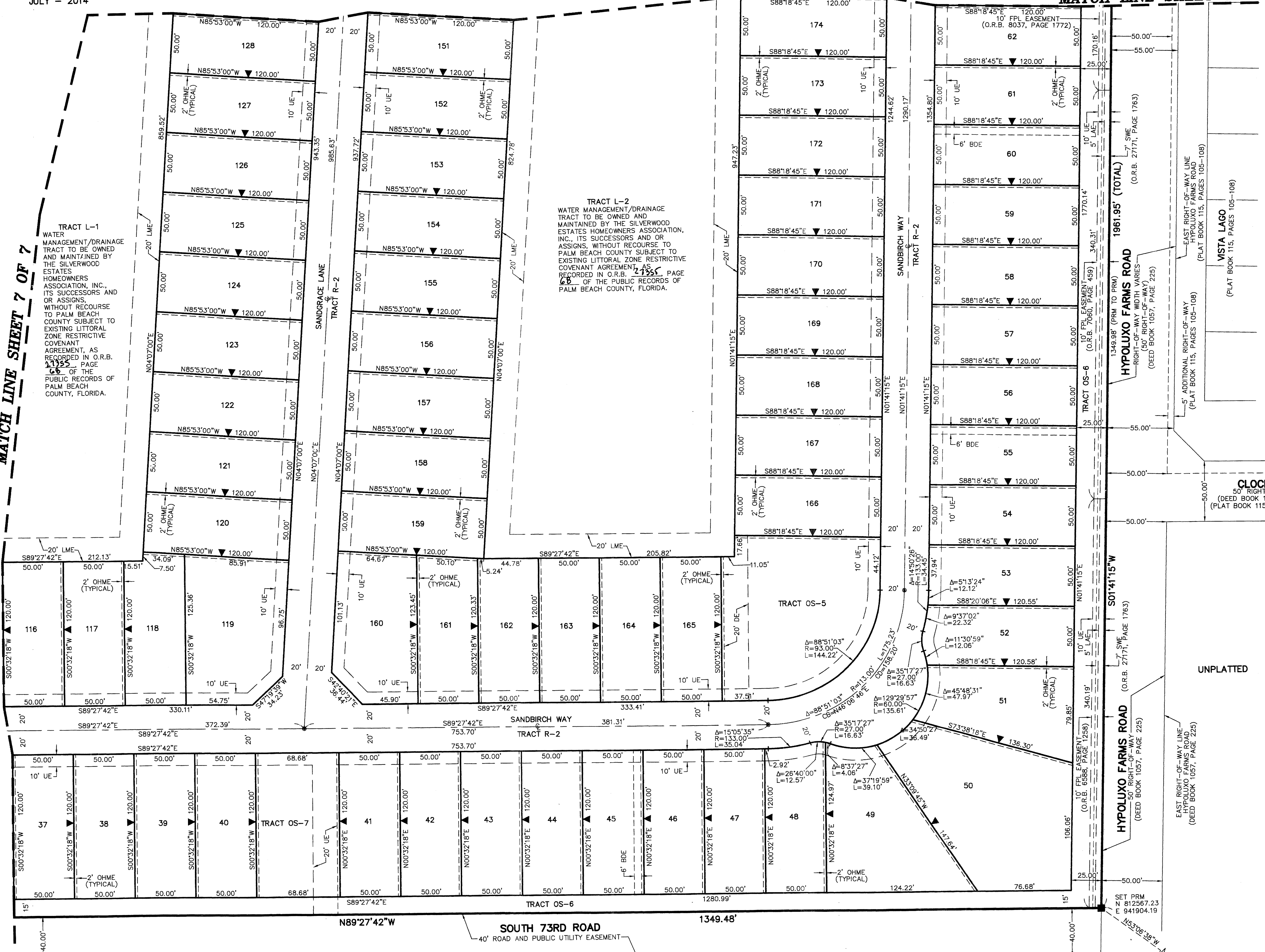
SILVERWOOD ESTATES

MARQUEZ-JONES PUD, A PLANNED UNIT DEVELOPMENT
BEING A PORTION OF SECTION 11, TOWNSHIP 45 SOUTH, RANGE 42 EAST,
PALM BEACH COUNTY, FLORIDA.

1000-266 THIS INSTRUMENT PREPARED BY
DAVID P. LINDLEY
OF
CAULFIELD and WHEELER, INC.
SURVEYORS - ENGINEERS - PLANNERS
7900 GLADES ROAD, SUITE 100
BOCA RATON, FLORIDA 33434 - (561)392-1991
JULY - 2014

MATCH LINE SHEET 4 OF 7

MATCH LINE SHEET 7 OF 7



TRACT L-1
WATER MANAGEMENT/DRAINAGE TRACT TO BE OWNED AND MAINTAINED BY THE SILVERWOOD ESTATES HOMEOWNERS ASSOCIATION, INC., ITS SUCCESSORS AND OR ASSIGNS, WITHOUT RECOURSE TO PALM BEACH COUNTY SUBJECT TO EXISTING LITTORAL ZONE RESTRICTIVE COVENANT, AS AGREEMENT, AS RECORDED IN O.R.B. 21735, PAGE 66 OF THE PUBLIC RECORDS OF PALM BEACH COUNTY, FLORIDA.

TRACT L-2
WATER MANAGEMENT/DRAINAGE TRACT TO BE OWNED AND MAINTAINED BY THE SILVERWOOD ESTATES HOMEOWNERS ASSOCIATION, INC., ITS SUCCESSORS AND OR ASSIGNS, WITHOUT RECOURSE TO PALM BEACH COUNTY SUBJECT TO EXISTING LITTORAL ZONE RESTRICTIVE COVENANT, AS AGREEMENT, AS RECORDED IN O.R.B. 21735, PAGE 66 OF THE PUBLIC RECORDS OF PALM BEACH COUNTY, FLORIDA.

UNPLATTED

FOUND PALM BEACH COUNTY
HORIZONTAL CONTROL POINT "COURSE"
N 811869.9140
E 937926.3950

FOUND PALM BEACH COUNTY
HORIZONTAL CONTROL POINT "FINN"
N 811835.0230
E 942879.7740