

1000-866 THIS INSTRUMENT PREPARED BY  
 DAVID P. LINDLEY  
 OF  
**CAULFIELD and WHEELER, INC.**  
 SURVEYORS - ENGINEERS - PLANNERS  
 7900 GLADES ROAD, SUITE 100  
 BOCA RATON, FLORIDA 33434 - (561)392-1991  
 JULY - 2014

# SILVERWOOD ESTATES

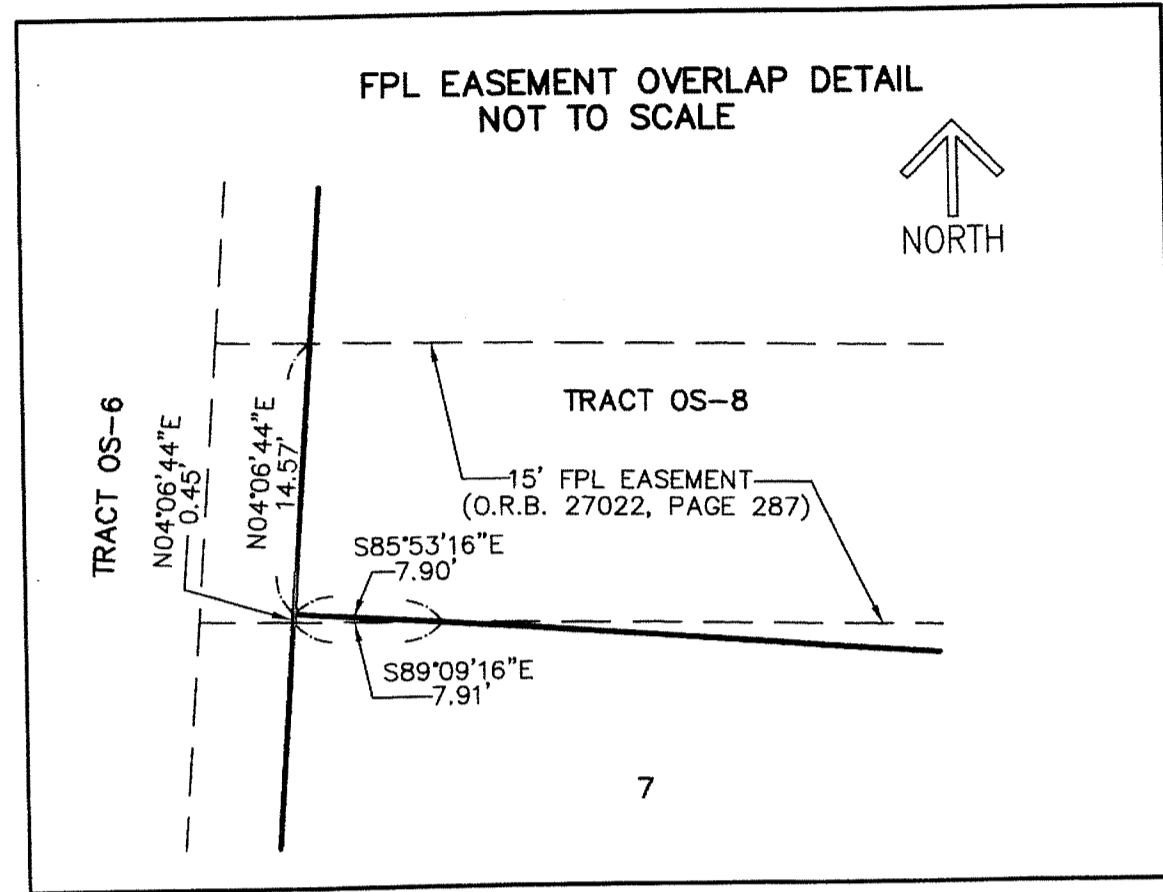
MARQUEZ-JONES PUD, A PLANNED UNIT DEVELOPMENT  
 BEING A PORTION OF SECTION 11, TOWNSHIP 45 SOUTH, RANGE 42 EAST,  
 PALM BEACH COUNTY, FLORIDA.

# 179

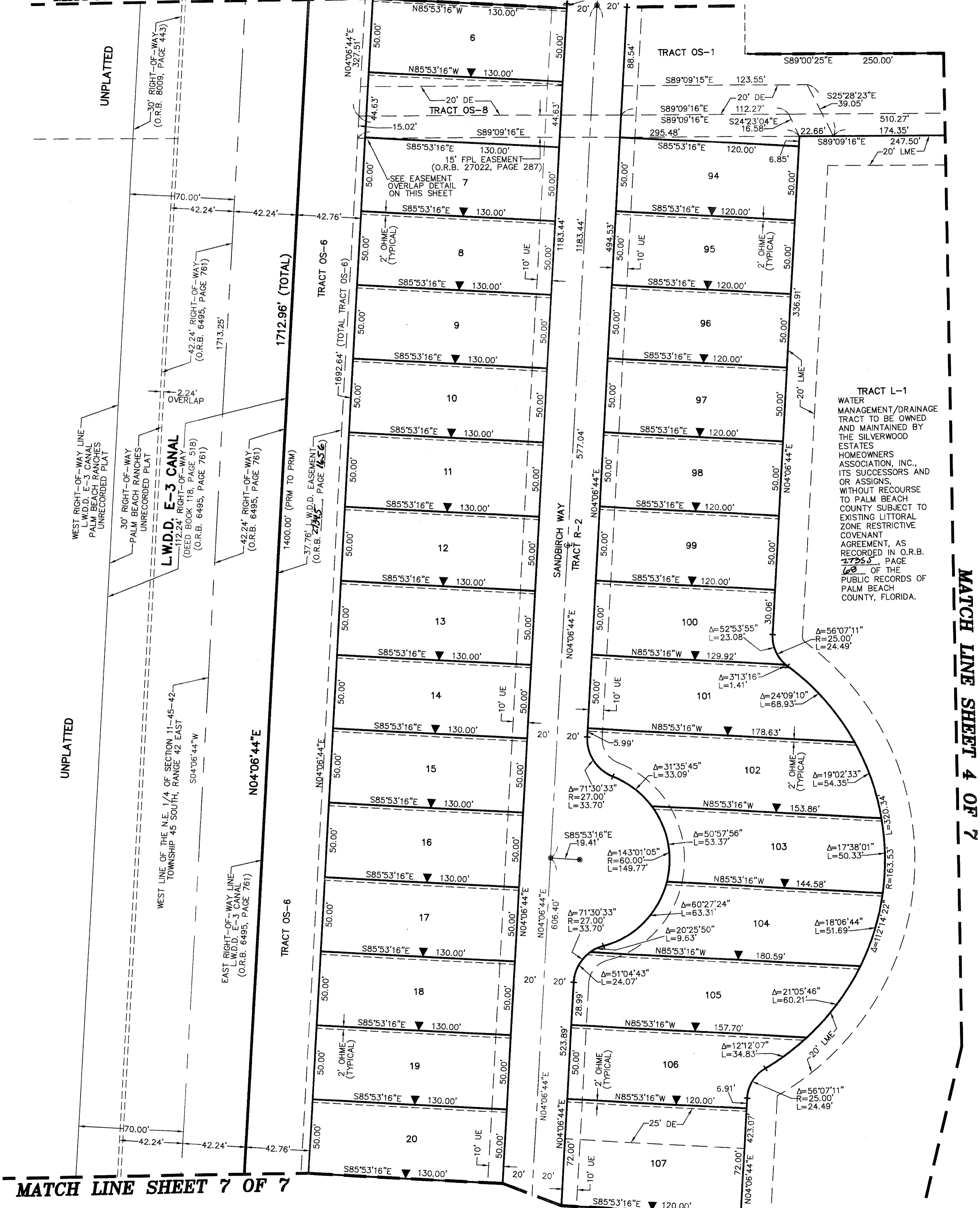
STATE OF FLORIDA  
 COUNTY OF PALM BEACH  
 THIS PLAT WAS FILED FOR  
 RECORD AT \_\_\_\_\_ M.  
 THIS \_\_\_\_\_ DAY OF \_\_\_\_\_  
 A.D. 20\_\_\_\_ AND DULY RECORDED  
 IN PLAT BOOK \_\_\_\_\_ ON  
 PAGES \_\_\_\_\_ AND \_\_\_\_\_  
 SHARON R. BOCK  
 CLERK AND COMPTROLLER

BY: \_\_\_\_\_  
 DEPUTY CLERK

**SHEET 6 OF 7**

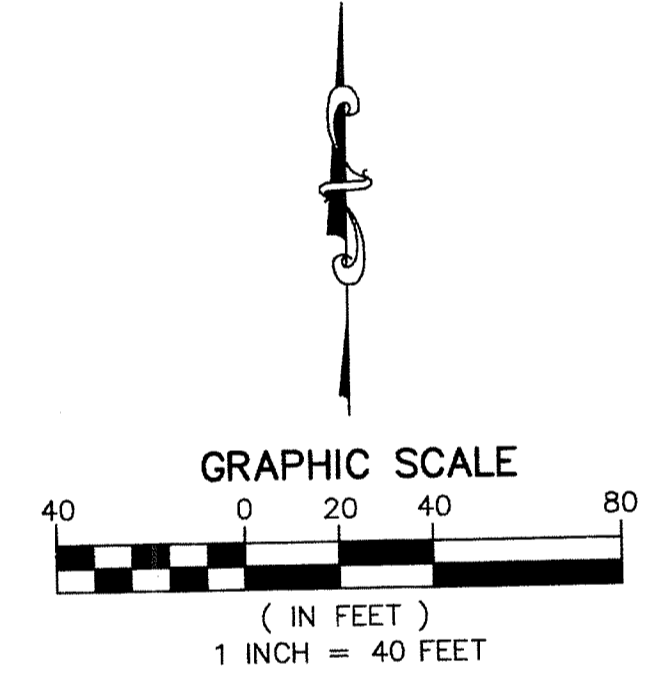
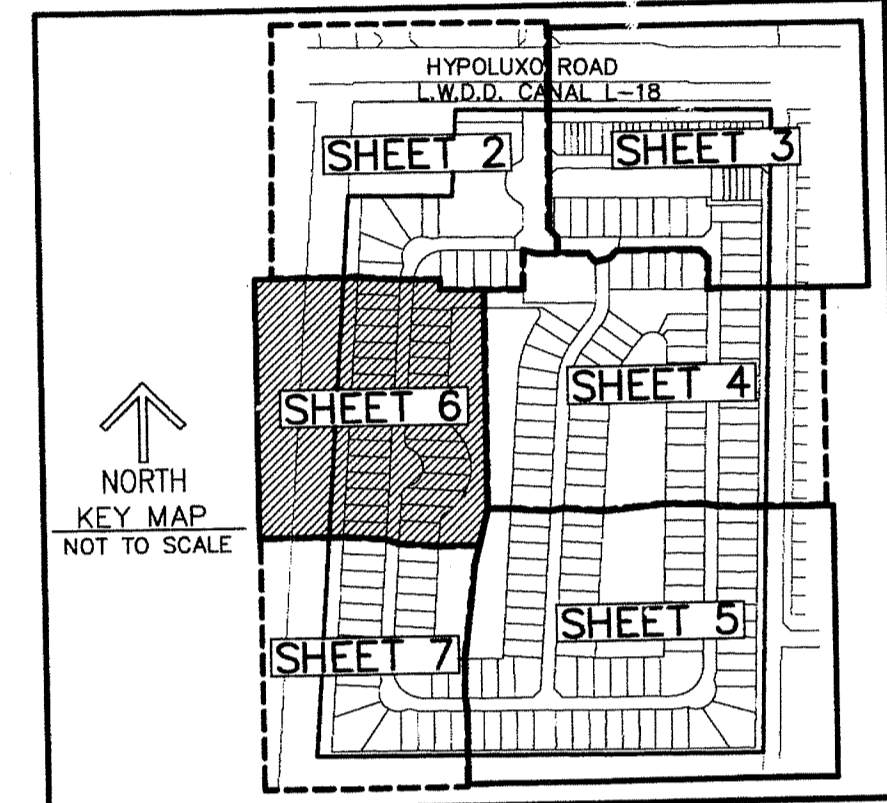


**MATCH LINE SHEET 2 OF 7**



**MATCH LINE SHEET 4 OF 7**

**MATCH LINE SHEET 7 OF 7**



**NOTES**  
**COORDINATES, BEARINGS AND DISTANCES**  
 COORDINATES SHOWN ARE GRID  
 DATUM = NAD 83 1990 ADJUSTMENT  
 ZONE = FLORIDA EAST  
 LINEAR UNIT = US SURVEY FEET  
 COORDINATE SYSTEM 1983 STATE PLANE  
 TRANSVERSE MERCATOR PROJECTION  
 ALL DISTANCES ARE GROUND  
 SCALE FACTOR = 1.0000340  
 GROUND DISTANCE X SCALE FACTOR = GRID DISTANCE  
 BEARINGS AS SHOWN HEREON ARE GRID DATUM,  
 NAD 83 1990 ADJUSTMENT, FLORIDA EAST ZONE.

**LEGEND/ABBREVIATIONS**

- ⊙ - CENTERLINE
- Δ - DELTA (CENTRAL ANGLE)
- BDE - BUFFER DRAINAGE EASEMENT
- DE - DRAINAGE EASEMENT
- E - EASTING
- FPL - FLORIDA POWER & LIGHT CO.
- L - ARC LENGTH
- LAE - LIMITED ACCESS EASEMENT
- LB - LICENSED BUSINESS
- LMAE - LAKE MAINTENANCE ACCESS EASEMENT
- LME - LAKE MAINTENANCE EASEMENT
- LSE - LIFT STATION EASEMENT
- L.W.D.D. - LAKE WORTH DRAINAGE DISTRICT
- N - NORTHING
- OHME - OVERHANG/MAINTENANCE EASEMENT
- O.R.B. - OFFICIAL RECORD BOOK
- R - RADIUS
- (R) - INDICATES RADIAL LINE
- SWE - DENOTES SIDEWALK EASEMENT
- UE - UTILITY EASEMENT
- ⬄ - INDICATES "ZERO" SIDE OF LOT LINE
- PRM - DENOTES PERMANENT REFERENCE MONUMENT
- PCP - DENOTES PERMANENT CONTROL POINT