

TARA COVE

A PORTION OF THE SOUTHEAST QUARTER OF THE SOUTHEAST QUARTER OF THE NORTHWEST QUARTER OF SECTION 13, TOWNSHIP 43 SOUTH, RANGE 42 EAST, PALM BEACH COUNTY, FLORIDA.

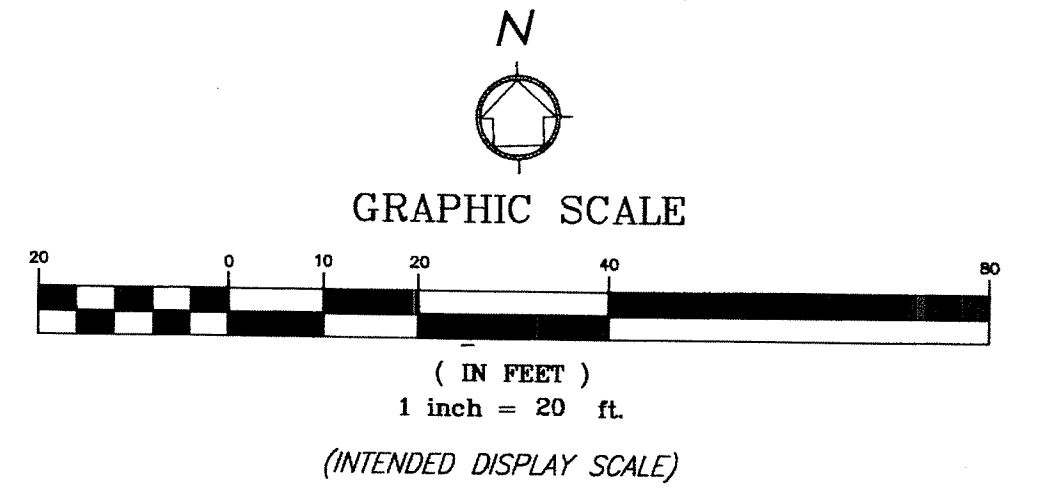
186

State of Florida }
County of Palm Beach } SS

THIS PLAT WAS FILED FOR RECORD AT _____ M.
THIS _____ DAY OF _____ A.D. 2015 AND DULY RECORDED
IN PLAT BOOK _____ ON PAGES _____ THROUGH _____
SHARON R. BOCK
CLERK AND COMPTROLLER
BY: _____
DEPUTY CLERK

SHEET 4 OF 6 SHEETS

THE PALM CLUB VILLAGE 1-#1,
A CONDOMINIUM
(ORB 4039, PG. 1229)
THE PALM CLUB VILLAGE 1-#2,
A CONDOMINIUM
(ORB 4083, PG. 1564)

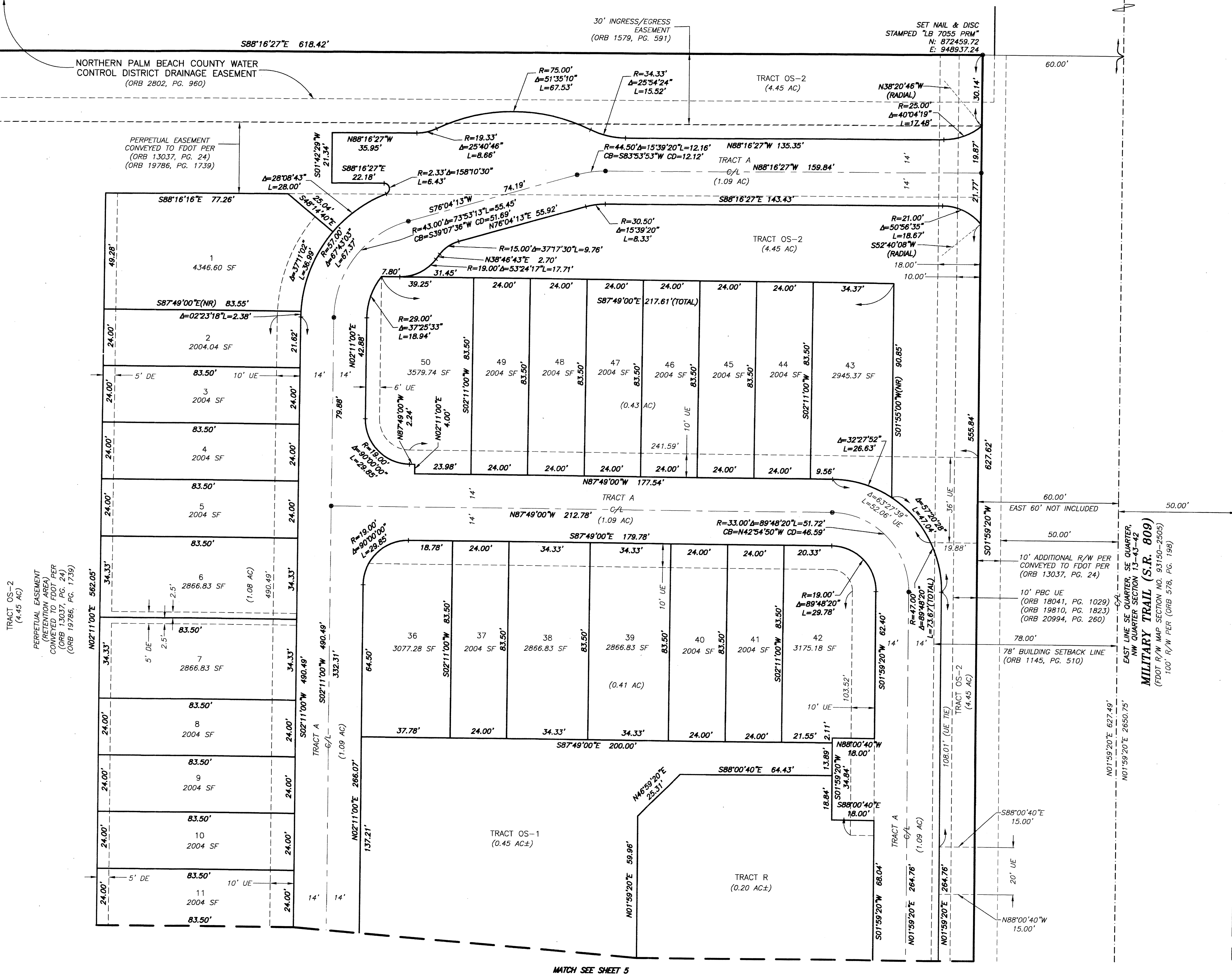


- LEGEND:**
- AC = Acres
 - CB = Chord Bearing
 - CD = Chord Distance
 - C/L = Center Line
 - CCR = Certified Corner Record
 - Conc. = Concrete
 - DE = Drainage Easement
 - Δ = Delta (Central Angle)
 - EAE = Emergency Access Easement
 - FND. = Found
 - FDOT = Florida Department of Transportation
 - L = Length of Arc
 - LB = Licensed Business
 - LSE = Lift Station Easement
 - (NR) = Non-Radial
 - ORB = Official Records Book
 - PG. = Page
 - PBC = Palm Beach County
 - PB = Plat Book
 - PCP = Permanent Control Point (PCP)
 - PRM = Permanent Reference Monument
 - R = Radius
 - R/W = Right-of-Way
 - SF = Square Feet
 - UE = Utility Easement
 - = Set 4"x4" Concrete (PRM) & Aluminum Disc Stamped "LB 7055 PRM" Unless Otherwise Noted

NOTE: Lot lines intersecting circular curves are radial unless otherwise noted.

WGI
Wantman Group, Inc.

Engineering ♦ Planning ♦ Surveying ♦ Environmental
2035 VISTA PARKWAY, SUITE 100, WEST PALM BEACH, FL 33411
(888) 909-2220, phone (561) 687-1110, fax
CERTIFICATE OF AUTHORIZATION No. LB 7055
ORLANDO - PORT ST. LUCIE - TAMPA
THIS INSTRUMENT WAS PREPARED BY ERIC R. MATTHEWS, P.S.M.
PROFESSIONAL SURVEYOR AND MAPPER, LICENSE NO. 6717
FOR THE FIRM: WANTMAN GROUP, INC.



MATCH SEE SHEET 5

\\1523.00.007\272 N\W\Survey\Drawings\Survey\1523000_Plat.dwg Sh 4 Apr 24, 2015