

This Plat was filed for record at \_\_\_\_\_ M. this \_\_\_\_\_ day of \_\_\_\_\_ 2014, and duly recorded in Plat Book No. \_\_\_\_\_ on page \_\_\_\_\_.

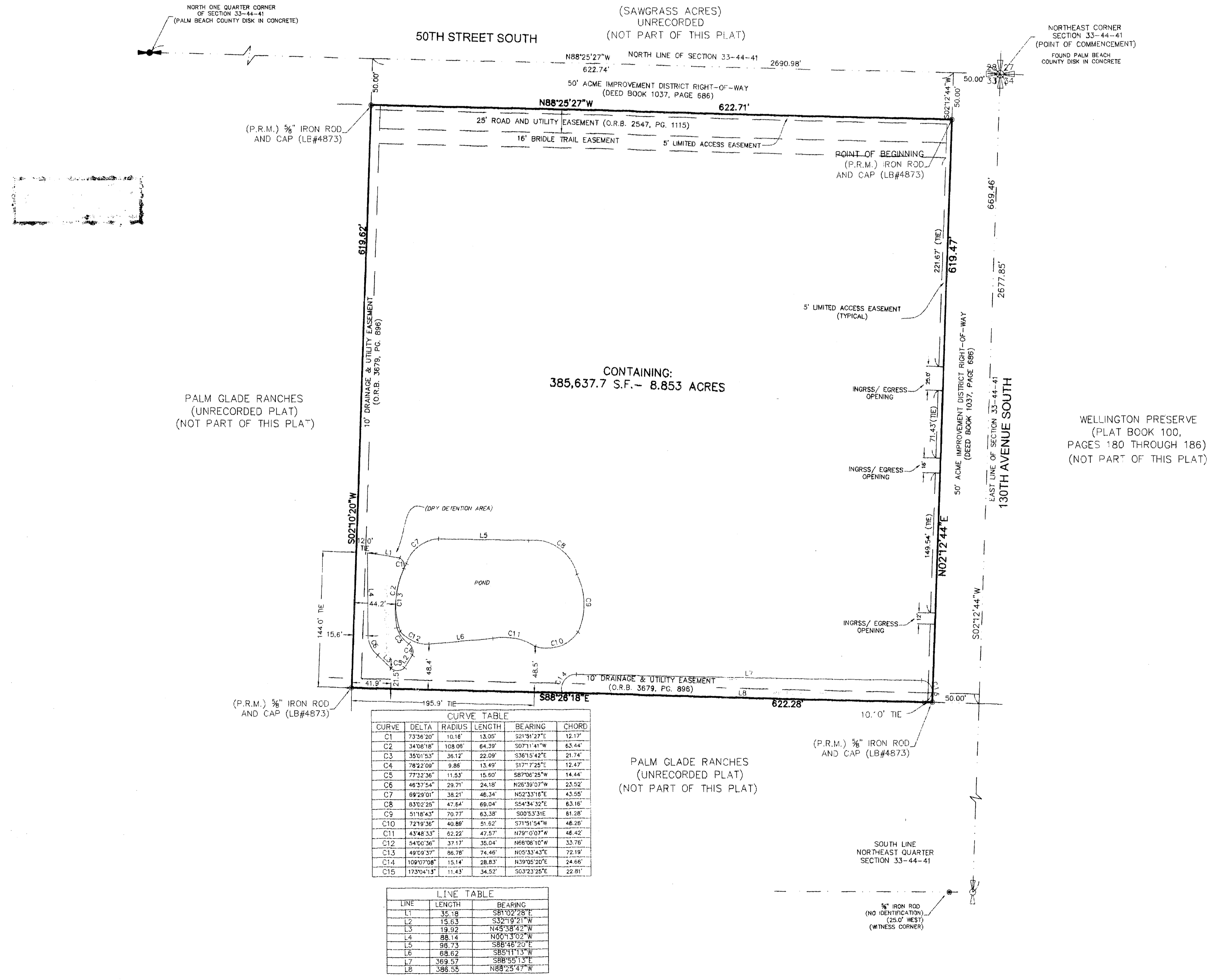
SHARON R. BOCK,  
Clerk Circuit Court  
& Comptroller

By: \_\_\_\_\_, D.C.

OS DRESSAGE FARM

BEING THE EAST HALF (E 1/2) OF THE NORTHEAST ONE-QUARTER (NE 1/4) OF THE NORTHEAST ONE-QUARTER (NE 1/4) OF THE NORTHEAST ONE-QUARTER (NE 1/4) OF SECTION 33, TOWNSHIP 44 SOUTH, RANGE 41 EAST, OF PALM BEACH COUNTY, FLORIDA; AND THE WEST HALF (W 1/2) OF THE NORTHEAST ONE-QUARTER (NE 1/4) OF THE NORTHEAST ONE-QUARTER (NE 1/4) OF SECTION 33, TOWNSHIP 44 SOUTH, RANGE 41 EAST, OF PALM BEACH COUNTY, FLORIDA; LESS THE NORTH AND EAST 50 FOOT CANAL RIGHT-OF-WAYS.

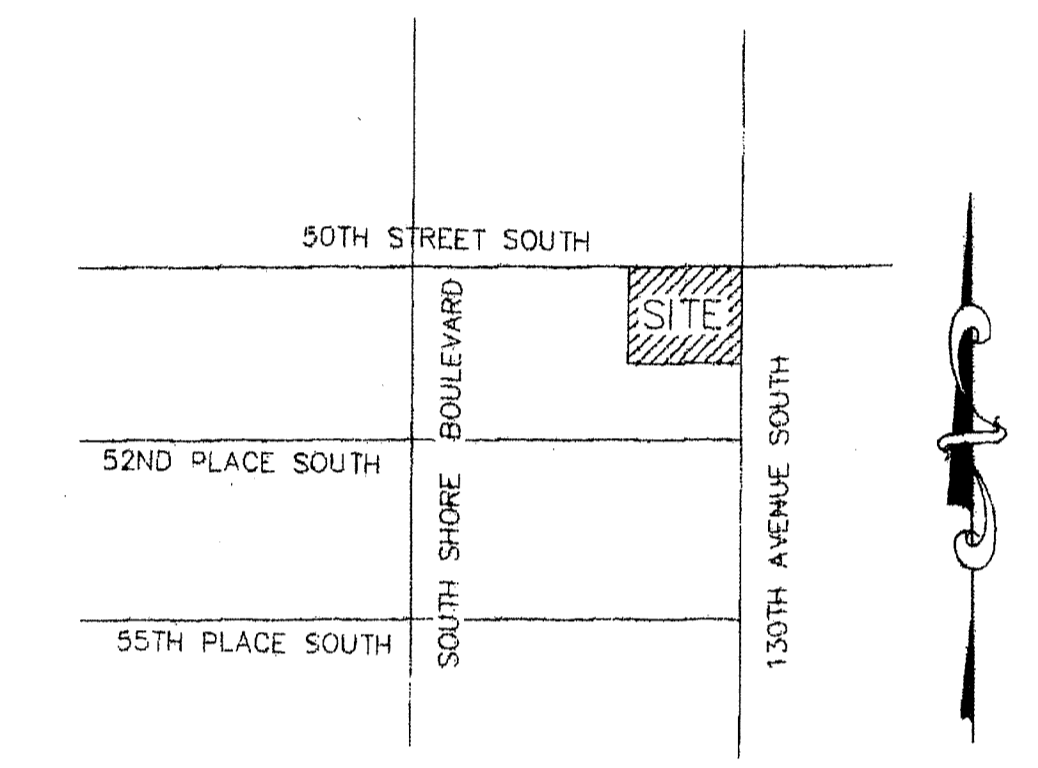
VILLAGE OF WELLINGTON  
PALM BEACH COUNTY, FLORIDA  
OCTOBER, 2014  
SHEET ONE OF TWO



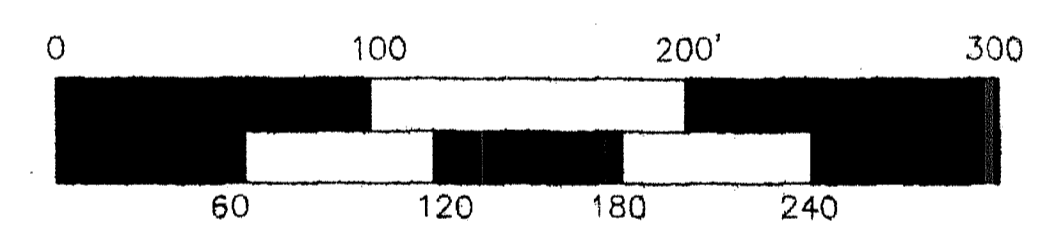
CONTAINING:  
385,637.7 S.F. - 8.853 ACRES

| CURVE | DELTA      | RADIUS  | LENGTH | BEARING     | CHORD  |
|-------|------------|---------|--------|-------------|--------|
| C1    | 73°36'20"  | 10.16'  | 13.09' | S21°31'27"E | 12.17' |
| C2    | 34°08'18"  | 108.09' | 64.39' | S07°11'41"W | 63.44' |
| C3    | 35°01'53"  | 36.12'  | 22.09' | S36°15'42"E | 21.74' |
| C4    | 78°22'09"  | 9.86'   | 13.49' | S17°17'25"E | 12.47' |
| C5    | 77°32'36"  | 11.53'  | 15.50' | S87°00'25"W | 14.44' |
| C6    | 46°37'54"  | 29.71'  | 24.16' | N26°39'07"W | 23.32' |
| C7    | 69°29'01"  | 38.21'  | 46.34' | N52°33'18"E | 43.55' |
| C8    | 83°02'26"  | 47.64'  | 69.04' | S54°34'30"E | 63.16' |
| C9    | 51°18'43"  | 20.77'  | 63.38' | S00°53'31"E | 61.38' |
| C10   | 72°19'36"  | 40.89'  | 51.92' | S71°51'54"W | 46.26' |
| C11   | 43°48'33"  | 62.22'  | 47.57' | N79°01'07"W | 46.42' |
| C12   | 54°00'36"  | 37.17'  | 35.04' | N68°08'10"W | 33.76' |
| C13   | 49°59'37"  | 86.78'  | 74.46' | N00°13'43"E | 72.19' |
| C14   | 109°07'08" | 15.14'  | 28.83' | N39°05'20"E | 24.66' |
| C15   | 173°04'13" | 11.45'  | 34.52' | S03°23'25"E | 22.81' |

| LINE | LENGTH | BEARING     |
|------|--------|-------------|
| L1   | 35.18  | S81°02'28"E |
| L2   | 15.53  | S32°19'21"W |
| L3   | 19.52  | N45°38'42"W |
| L4   | 88.14  | N00°13'02"W |
| L5   | 98.73  | S88°48'20"E |
| L6   | 68.62  | S85°11'13"W |
| L7   | 369.57 | S88°55'13"E |
| L8   | 386.55 | N88°25'47"W |



LOCATION MAP not to scale



GRAPHIC SCALE IN FEET  
SCALE: 1" = 60'

LEGEND

- PRM or ● = Set Permanent Reference Monument—Set 5/8" Iron Rod and Cap (P.R.M.—JDC—LB#4873)
- O.R.B. = Official Record Book
- PG. = Page
- V.O.W. = Village of Wellington
- N = NORTH
- S = SOUTH
- E = EAST
- W = WEST
- LS = LAND SURVEYOR
- EB = ENGINEERING BUSINESS
- LB = LAND SURVEYING BUSINESS
- PLS = PROFESSIONAL LAND SURVEYOR

FILE NO.  
5870  
(10-27-14)

RICHARD G. RADER, P.L.S.  
FLORIDA CERTIFICATE NO.: 4861

**JDC** Development Services, Inc.  
EB#4873 LB#4873  
12794 W. Forest Hill Boulevard, Suite 11A  
Wellington, Florida. 33414  
Fax: (561) 790-4488 (561) 790-4471