

3140-3180 POLO DRIVE

BEING A REPLAT LOTS 5, 6 AND 7, GULF STREAM COVE, ACCORDING TO THE PLAT THEREOF AS RECORDED IN PLAT BOOK 24, PAGE 185 (P.R.P.B.CO.), BEING IN SECTION 3, TOWNSHIP 46 SOUTH, RANGE 43 EAST, TOWN OF GULF STREAM, PALM BEACH COUNTY, FLORIDA

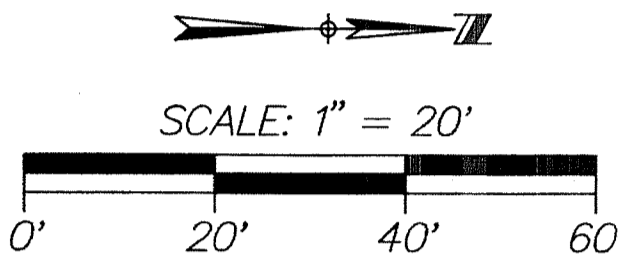
FEBRUARY 2015
SHEET 2 OF 2

THIS INSTRUMENT WAS PREPARED BY PAUL D. ENGLE, IN THE OFFICE OF O'BRIEN, SUITER & O'BRIEN, INC., 955 N.W. 17TH AVENUE, SUITE K-1, DELRAY BEACH, FLORIDA 33445 (561) 276-4501

196

COUNTY OF PALM BEACH
STATE OF FLORIDA

THIS PLAT WAS FILED FOR RECORD AT _____
THIS _____ DAY OF _____
2015, AND DULY RECORDED IN PLAT BOOK NO. _____
ON PAGE _____
SHARON R. BOOK, CLERK AND CONTROLLER
BY _____ DC



NOTES:

ALL BEARINGS SHOWN HEREON ARE RELATIVE TO THE SOUTH LINE OF LOT 7, (PLAT BOOK 24, PAGE 185), HAVING AN ASSUMED BEARING OF N90°00'00"E.

NOTICE: THIS PLAT, AS RECORDED IN ITS GRAPHIC FORM, IS THE OFFICIAL DEPICTION OF THE SUBDIVIDED LANDS DESCRIBED HEREIN AND WILL IN NO CIRCUMSTANCES BE SUPPLANTED IN AUTHORITY BY ANY OTHER GRAPHIC OR DIGITAL FORM OF THE PLAT. THERE MAY BE ADDITIONAL RESTRICTIONS THAT ARE NOT RECORDED ON THIS PLAT THAT MAY BE FOUND IN THE PUBLIC RECORDS OF PALM BEACH COUNTY, FLORIDA.

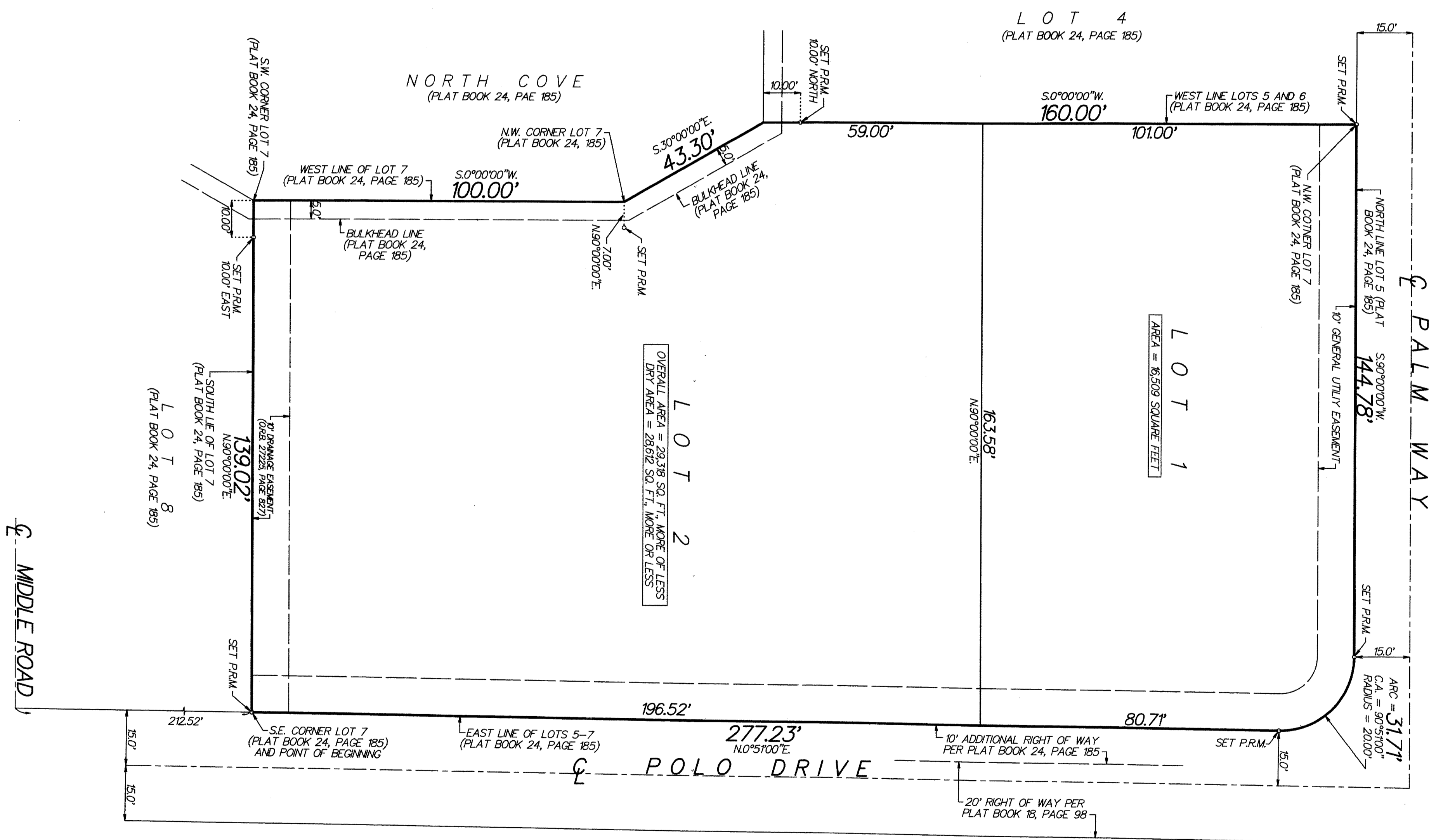
THE TOWN OF GULF STREAM IS HEREBY GRANTED THE RIGHT OF ACCESS FOR EMERGENCY AND MAINTENANCE PURPOSES.

THIS INSTRUMENT WAS PREPARED BY PAUL D. ENGLE, IN THE OFFICE OF O'BRIEN, SUITER & O'BRIEN, INC., 955 N.W. 17TH AVENUE, SUITE K-1, DELRAY BEACH, FLORIDA 33445 (561) 276-4501

PERMANENT REFERENCE MONUMENTS ARE SHOWN THIS: ○

THERE SHALL BE NO BUILDINGS OR ANY KIND OF CONSTRUCTION PLACED ON WATER, SEWER OR DRAINAGE EASEMENTS. NO STRUCTURES SHALL BE PLACED WITHIN A HORIZONTAL DISTANCE OF 10 FEET FROM ANY EXISTING OR PROPOSED TOWN OF GULF STREAM MAINTAINED WATER, SEWER OR DRAINAGE FACILITIES. CONSTRUCTION OR LANDSCAPING UPON MAINTENANCE OR MAINTENANCE ACCESS EASEMENTS MUST BE IN CONFORMANCE WITH ALL BUILDING AND ZONING CODES AND/OR ORDINANCES OF THE TOWN OF GULF STREAM.

THERE SHALL BE NO TREES OR SHRUBS PLACED ON UTILITY EASEMENTS WHICH ARE PROVIDED FOR WATER AND SEWER USE OR UPON DRAINAGE EASEMENTS. LANDSCAPING ON ANY OTHER UTILITY EASEMENTS SHALL BE ALLOWED ONLY AFTER CONSENT OF ALL UTILITY COMPANIES OCCUPYING SAME.



- LEGEND:
- CL = CENTERLINE
 - CONC = CONCRETE
 - O.R.B. = OFFICIAL RECORDS BOOK
 - P.R.M. = PERMANENT REFERENCE MONUMENT (4"x4" CONCRETE MONUMENT STAMPED "PRM LB353") UNLESS STATED OTHERWISE
 - G.U.E. = GENERAL UTILITY EASEMENT
 - C.A. = CENTRAL ANGLE
 - C.B. = CHORD BEARING
 - P.C. = POINT OF CURVATURE
 - P.R.C. = POINT OF REVERSE CURVATURE
 - P.O.B. = POINT OF BEGINNING
 - P.R.P.B.CO. = PUBLIC RECORDS OF PALM BEACH COUNTY

2025 RELEASE UNDER E.O. 14176