

# PERIMETER

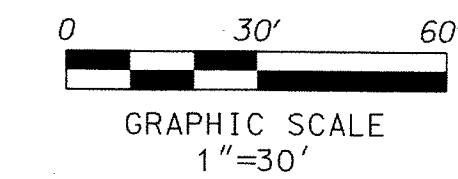
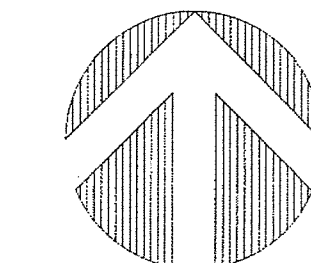
SURVEYING & MAPPING  
Certificate of Authorization No. LB7264  
Prepared by: Jeff S. Hodapp, P.S.M.  
947 Clint Moore Road  
Boca Raton, Florida 33487  
Tel: (561) 241-9988  
Fax: (561) 241-5182

# PARK CENTRAL AT CYPRESS KEY

A PORTION OF SECTION 34, TOWNSHIP 43 SOUTH, RANGE 41 EAST,  
VILLAGE OF ROYAL PALM BEACH, PALM BEACH COUNTY, FLORIDA

FEBRUARY, 2015

# 202

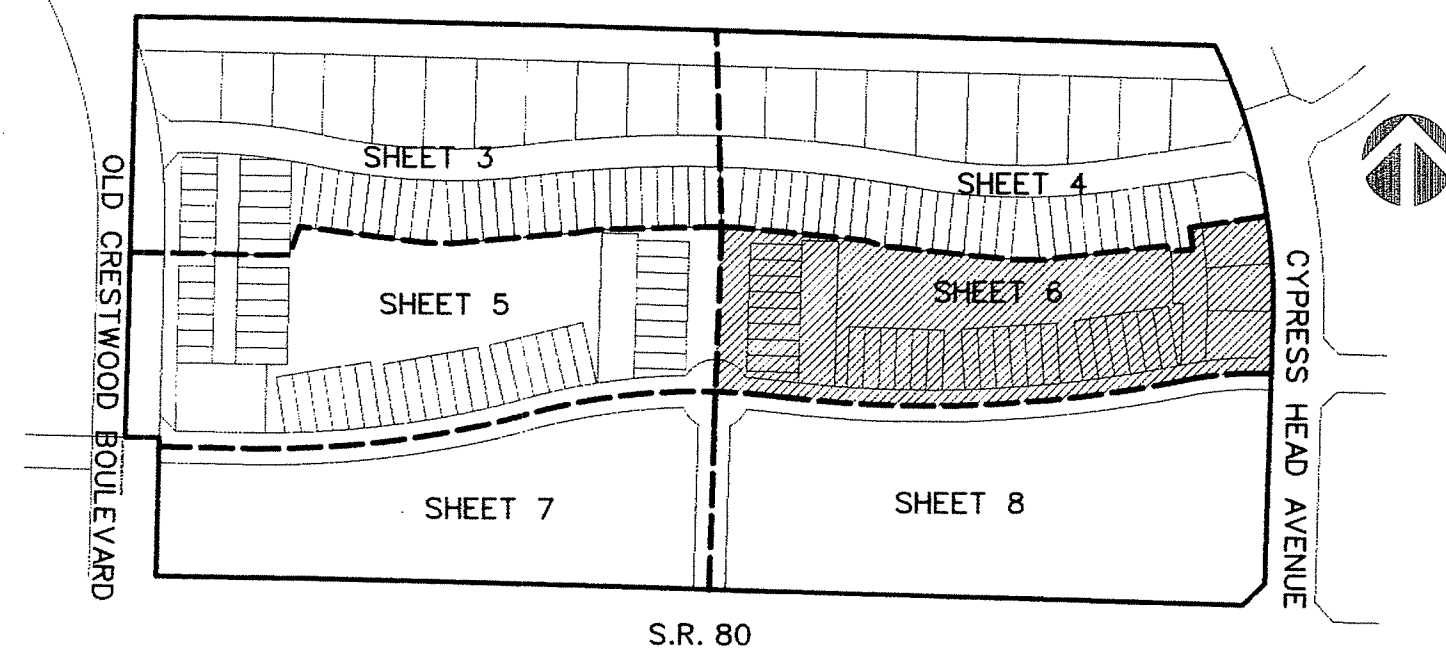


### LEGEND:

- ⊙ SET P.R.M. (UNLESS OTHERWISE NOTED)-4" X 4" CONC. MON. WITH ALUMINUM DISK STAMPED P.R.M. LB7264
- PERMANENT CONTROL POINT CENTERLINE
- L.S. LICENSED SURVEYOR
- L.S.E. LIFT STATION EASEMENT
- L.W.D.D. LAKE WORTH DRAINAGE DISTRICT MONUMENT
- O.R.B. OFFICIAL RECORDS BOOK
- N.R. NON-RADIAL
- P.B. PLAT BOOK
- P.B.C. PALM BEACH COUNTY
- P.B.C.R. PALM BEACH COUNTY RECORDS PAGE
- P.C.P. PERMANENT CONTROL POINT
- P.O.B. POINT OF BEGINNING
- P.O.C. POINT OF COMMENCEMENT
- P.R.M. PERMANENT REFERENCE MONUMENT
- P.S.M. PROFESSIONAL SURVEYOR & MAPPER
- P.U.D. PLANNED UNIT DEVELOPMENT
- R. RADIAL
- RAD. RAD
- R.P.B. ROAD PLAT BOOK
- R/W. RIGHT-OF-WAY
- SEC. SECTION
- S.F. SQUARE FEET
- U.E. UTILITY EASEMENT

### ABBREVIATIONS:

- ALUM. ALUMINUM
- CH. CHORD
- CHB. CHORD BEARING
- CONC. CONCRETE
- COR. CORNER
- Δ DELTA (CENTRAL ANGLE)
- D.E. DRAINAGE EASEMENT
- FND. FOUND
- L. ARLENGTH
- L.A.E. LIMITED ACCESS EASEMENT
- L.B.E. LANDSCAPE BUFFER EASEMENT
- L.B. LICENSED BUSINESS
- L.E. LANDSCAPE EASEMENT
- L.M.E. LAKE MAINTENANCE EASEMENT
- L.M.A.E. LAKE MAINTENANCE ACCESS EASEMENT



S.R. 80

KEY MAP  
NOT TO SCALE

SHEET 6 OF 8

