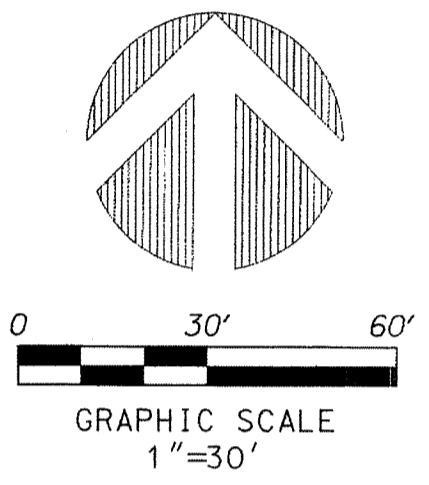
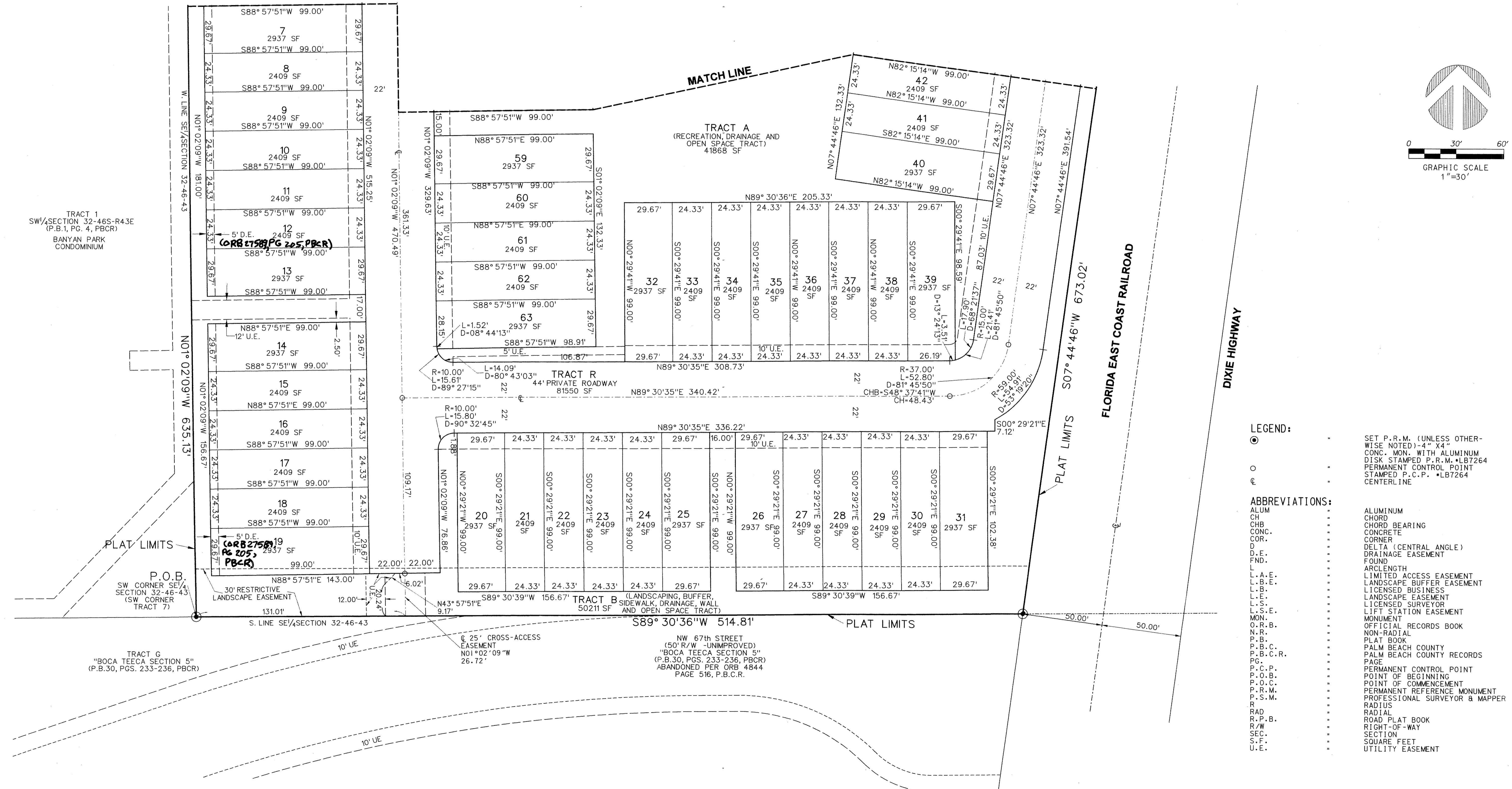


# PERIMETER

**SURVEYING & MAPPING**  
 Certificate of Authorization No. LB7264  
 Prepared by: Jeff S. Hodapp, P.S.M.  
 947 Clint Moore Road  
 Boca Raton, Florida 33487  
 Tel: (561) 241-9988  
 Fax: (561) 241-5182

# BOCA HIGHLANDS

A REPLAT OF A PORTION OF TRACT 7 OF "MAP SHOWING SUBDIVISIONS OF PORTIONS OF TOWNSHIPS 45 AND 46 SOUTH, RANGE 43 EAST, DADE COUNTY, FLORIDA", (P.B. 1, PG. 4, P.B.C.R.)  
 S.E. 1/4 SECTION 32, TOWNSHIP 46 SOUTH, RANGE 43 EAST,  
 CITY OF BOCA RATON, PALM BEACH COUNTY, FLORIDA  
 JANUARY, 2015



- LEGEND:**
- SET P.R.M. (UNLESS OTHERWISE NOTED) 4" X 4" CONC. MON. WITH ALUMINUM DISK STAMPED P.R.M. #LB7264
  - PERMANENT CONTROL POINT
  - ⊕ STAMPED P.C.P. #LB7264
  - CENTERLINE
- ABBREVIATIONS:**
- ALUM ALUMINUM
  - CHD CHORD
  - CHB CHORD BEARING
  - CONC. CONCRETE
  - COR. CORNER
  - Δ DELTA (CENTRAL ANGLE)
  - D.E. DRAINAGE EASEMENT
  - FND. FOUND
  - L ARCLength
  - L.A.E. LIMITED ACCESS EASEMENT
  - L.S.E. LANDSCAPE BUFFER EASEMENT
  - L.B. LICENSED BUSINESS
  - L.E. LANDSCAPE EASEMENT
  - L.S.S.E. LICENSED SURVEYOR
  - LIFT STATION EASEMENT
  - MON. MONUMENT
  - O.R.B. OFFICIAL RECORDS BOOK
  - N.R. NON-RADIAL
  - P.B. PLAT BOOK
  - P.B.C. PALM BEACH COUNTY
  - P.B.C.R. PALM BEACH COUNTY RECORDS
  - PG. PAGE
  - P.C.P. PERMANENT CONTROL POINT
  - P.O.B. POINT OF BEGINNING
  - P.O.C. POINT OF COMMENCEMENT
  - P.R.M. PERMANENT REFERENCE MONUMENT
  - P.S.M. PROFESSIONAL SURVEYOR & MAPPER
  - R. RADIUS
  - RAD. RADIAL
  - R.P.B. ROAD PLAT BOOK
  - R/W. RIGHT-OF-WAY
  - SEC. SECTION
  - S.F. SQUARE FEET
  - U.E. UTILITY EASEMENT