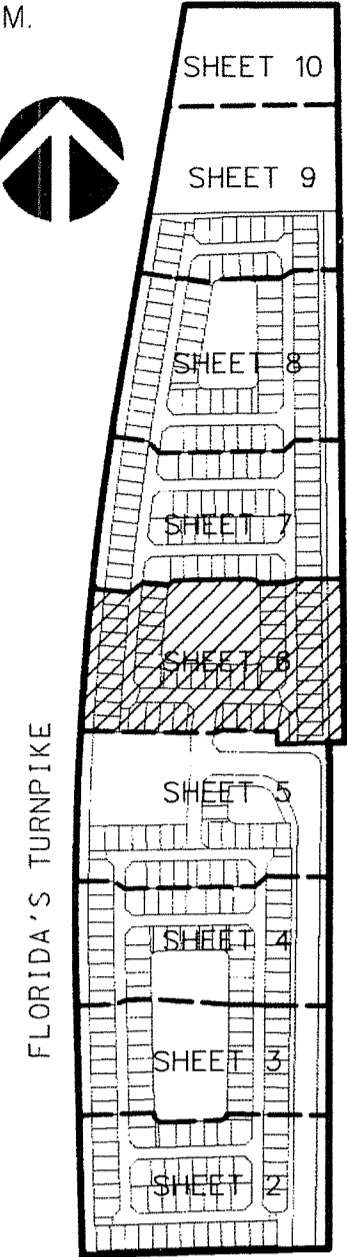


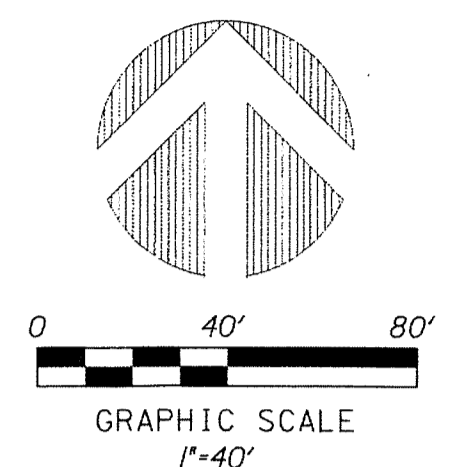
**PERIMETER**  
 SURVEYING & MAPPING  
 Certificate of Authorization No. LB7264  
 Prepared by: Jeff S. Hodapp, P.S.M.  
 947 Clint Moore Road  
 Boca Raton, Florida 33487  
 Tel: (561) 241-9988  
 Fax: (561) 241-5182



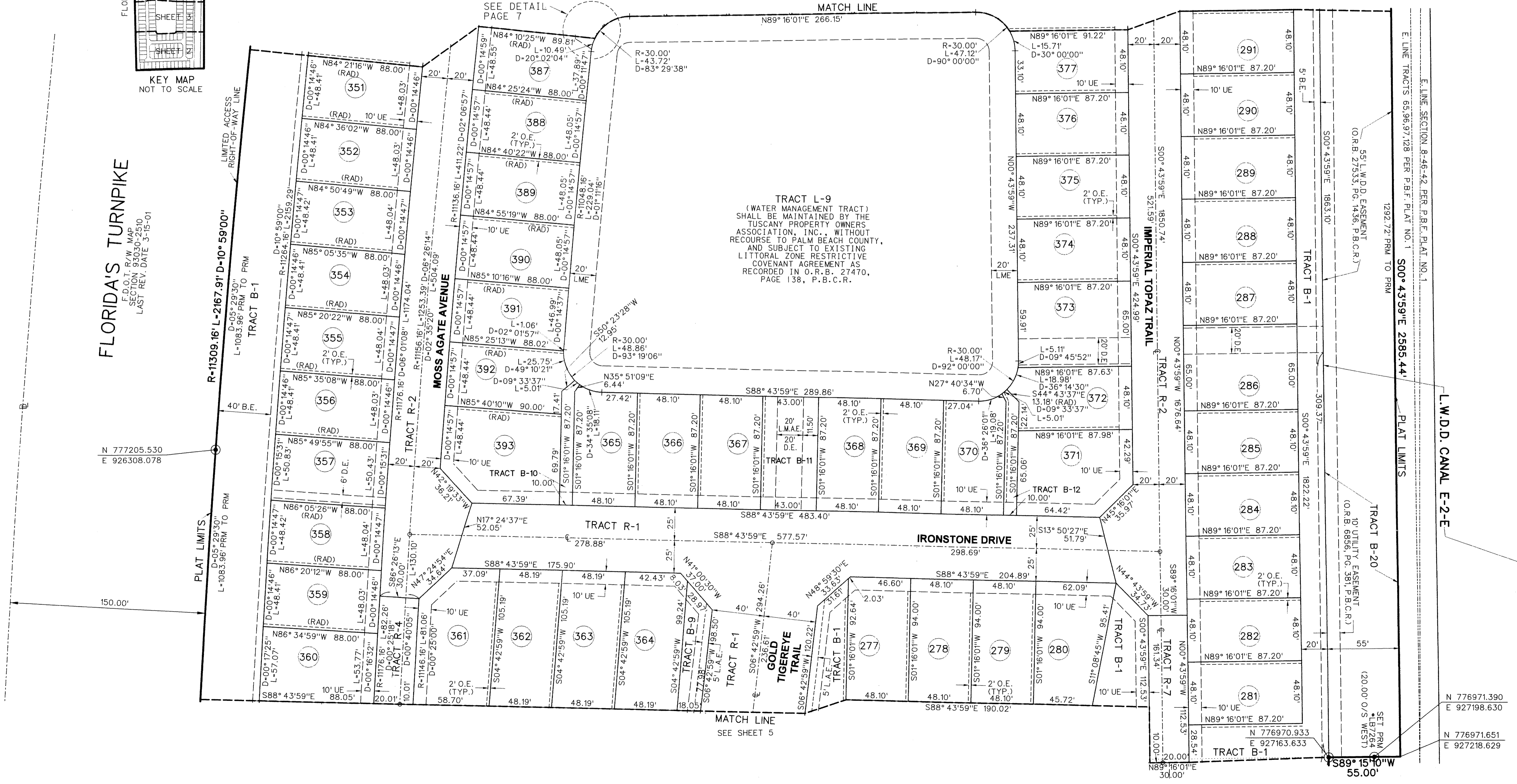
# ATLANTIC COMMONS - PLAT FIVE

A REPLAT OF PORTIONS OF TRACTS 1-3 AND 30-35 IN SECTION 17, TOWNSHIP 46 SOUTH, RANGE 42 EAST,  
 AND PORTIONS OF TRACTS 65, 66, 94-99 AND 126-128 IN SECTION 8, TOWNSHIP 46 SOUTH, RANGE 42 EAST,  
 OF "PALM BEACH FARMS CO. PLAT NO.1" (P.B. 2, PGS 26-28, P.B.C.R.)  
 PALM BEACH COUNTY, FLORIDA.

- LEGEND:**
- SET P.R.M. (UNLESS OTHERWISE NOTED) 4" x 4" CONC. MON. WITH ALUMINUM DISK STAMPED P.R.M. • LB7264
  - PERMANENT CONTROL POINT (NAIL & DISK • LB7264)
  - ⊙ CENTERLINE
- ABBREVIATIONS:**
- ALUM ALUMINUM
  - B.E. BUFFER EASEMENT
  - CH. CHORD
  - CHB. CHORD BEARING
  - CONC. CONCRETE
  - COR. CORNER
  - Δ DELTA (CENTRAL ANGLE)
  - D.E. DRAINAGE EASEMENT
  - D.T. DRIVEWAY TRACT
  - FND. FOUND
  - ARCL. LENGTH
  - L.A.E. LIMITED ACCESS EASEMENT
  - L.B.E. LANDSCAPE BUFFER EASEMENT
  - L.B. LICENSED BUSINESS
  - L.C.E. LANDSCAPE EASEMENT
  - L.M.E. LAKE MAINTENANCE EASEMENT
  - L.M.A.E. LAKE MAINTENANCE ACCESS EASEMENT
  - L.S. LICENSED SURVEYOR
  - L.S.E. LIFT STATION EASEMENT
  - L.W.D.D. LAKE WORTH DRAINAGE DISTRICT
  - MON. MONUMENT
  - O.E. OFFICIAL RECORDS BOOK
  - O.R.B. NON-RADIAL PLAT BOOK
  - P.B. PALM BEACH COUNTY
  - P.B.C. PALM BEACH COUNTY RECORDS
  - P.B.C.R. PALM BEACH COUNTY UTILITY EASEMENT
  - P.B.C.U.E. PAGE
  - P.C.P. PERMANENT CONTROL POINT
  - P.O.B. POINT OF BEGINNING
  - P.O.C. POINT OF COMMENCEMENT
  - P.R.M. PERMANENT REFERENCE MONUMENT
  - P.S.M. PROFESSIONAL SURVEYOR & MAPPER
  - P.U.D. PLANNED UNIT DEVELOPMENT
  - R. RADIUS
  - RAD. RADIAL
  - R.P.B. ROAD PLAT BOOK
  - R.W. RIGHT-OF-WAY
  - SEC. SECTION
  - S.F. SQUARE FEET
  - U.E. UTILITY EASEMENT



**FLORIDA'S TURNPIKE**  
 D.O.T. R/W MAP  
 SECTION 85030-2510  
 LAST REV. DATE 3-15-01



**FLORIDA'S TURNPIKE**  
 D.O.T. R/W MAP  
 SECTION 85030-2510  
 LAST REV. DATE 3-15-01

N 776971.390  
 E 927198.630  
 N 776971.651  
 E 927218.629