

0956001 THIS INSTRUMENT PREPARED BY
 DAVID P. LINDLEY
 OF
CAULFIELD and WHEELER, INC.
 SURVEYORS - ENGINEERS - PLANNERS
 7900 GLADES ROAD, SUITE 100
 BOCA RATON, FLORIDA 33434 - (561)392-1991
 JULY - 2014

MATCH LINE SHEET 11 OF 18

SHEET 15	SHEET 16	SHEET 17	SHEET 18
SHEET 11	SHEET 12	SHEET 13	SHEET 14
SHEET 7	SHEET 8	SHEET 9	SHEET 10
SHEET 3	SHEET 4	SHEET 5	SHEET 6

↑ NORTH
 SHEET INDEX
 NOT TO SCALE

39

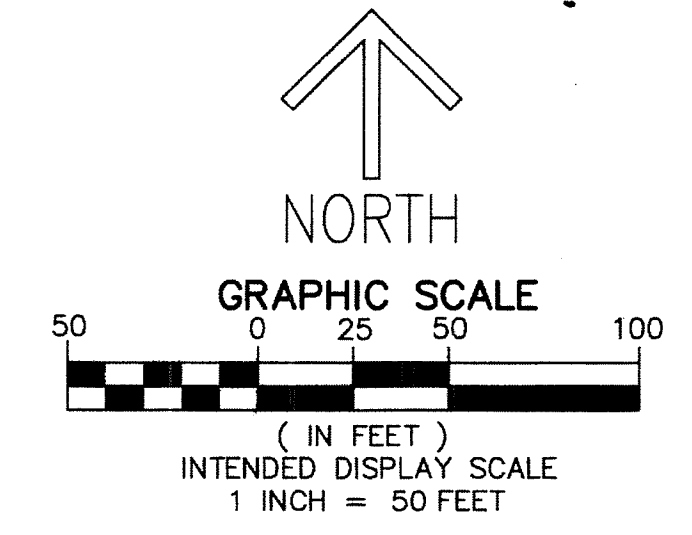
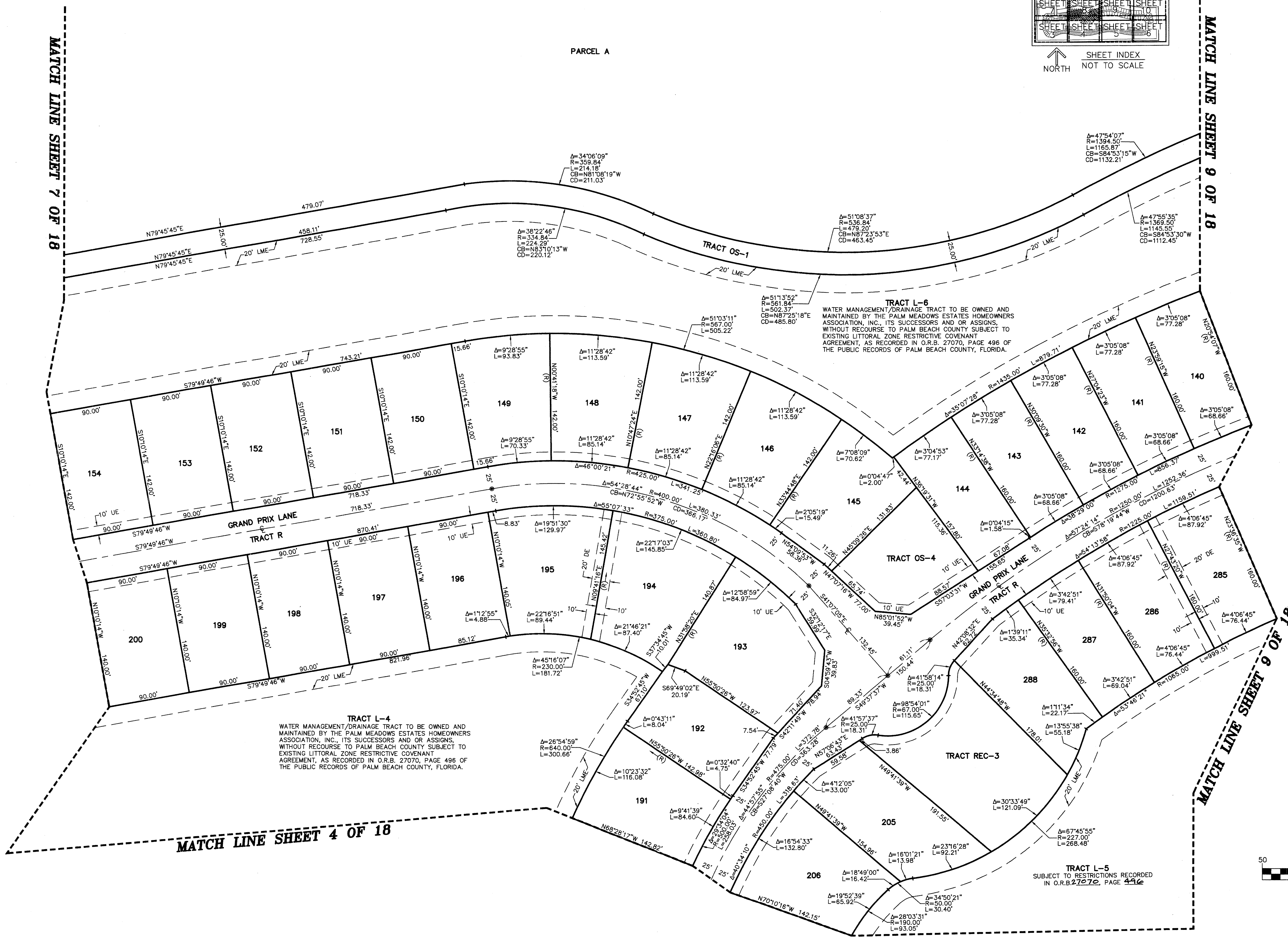
STATE OF FLORIDA
 COUNTY OF PALM BEACH
 THIS PLAT WAS FILED FOR
 RECORD AT _____ M.
 THIS _____ DAY OF _____
 A.D. 20____ AND DULY RECORDED
 IN PLAT BOOK _____ ON
 PAGES _____ AND _____

SHARON R. BOCK
 CLERK AND COMPTROLLER

By: _____
 DEPUTY CLERK

SHEET 8 OF 18

PALM MEADOWS ESTATES
 A PLANNED UNIT DEVELOPMENT
 BEING A REPLAT OF PARCEL A, PARCEL B, TRACTS A, B, C, D, L-1, L-2 AND L-3,
 PALM BEACH THOROUGHbred TRAINING FARM, ACCORDING TO THE PLAT THEREOF,
 AS RECORDED IN PLAT BOOK 96, PAGES 164 THROUGH 171, OF THE PUBLIC RECORDS OF PALM BEACH COUNTY, FLORIDA,
 LYING IN SECTIONS 17, 18, 19 AND 20, TOWNSHIP 45 SOUTH, RANGE 42 EAST, PALM BEACH COUNTY, FLORIDA.



MATCH LINE SHEET 7 OF 18

MATCH LINE SHEET 9 OF 18

MATCH LINE SHEET 4 OF 18

MATCH LINE SHEET 10 OF 18