

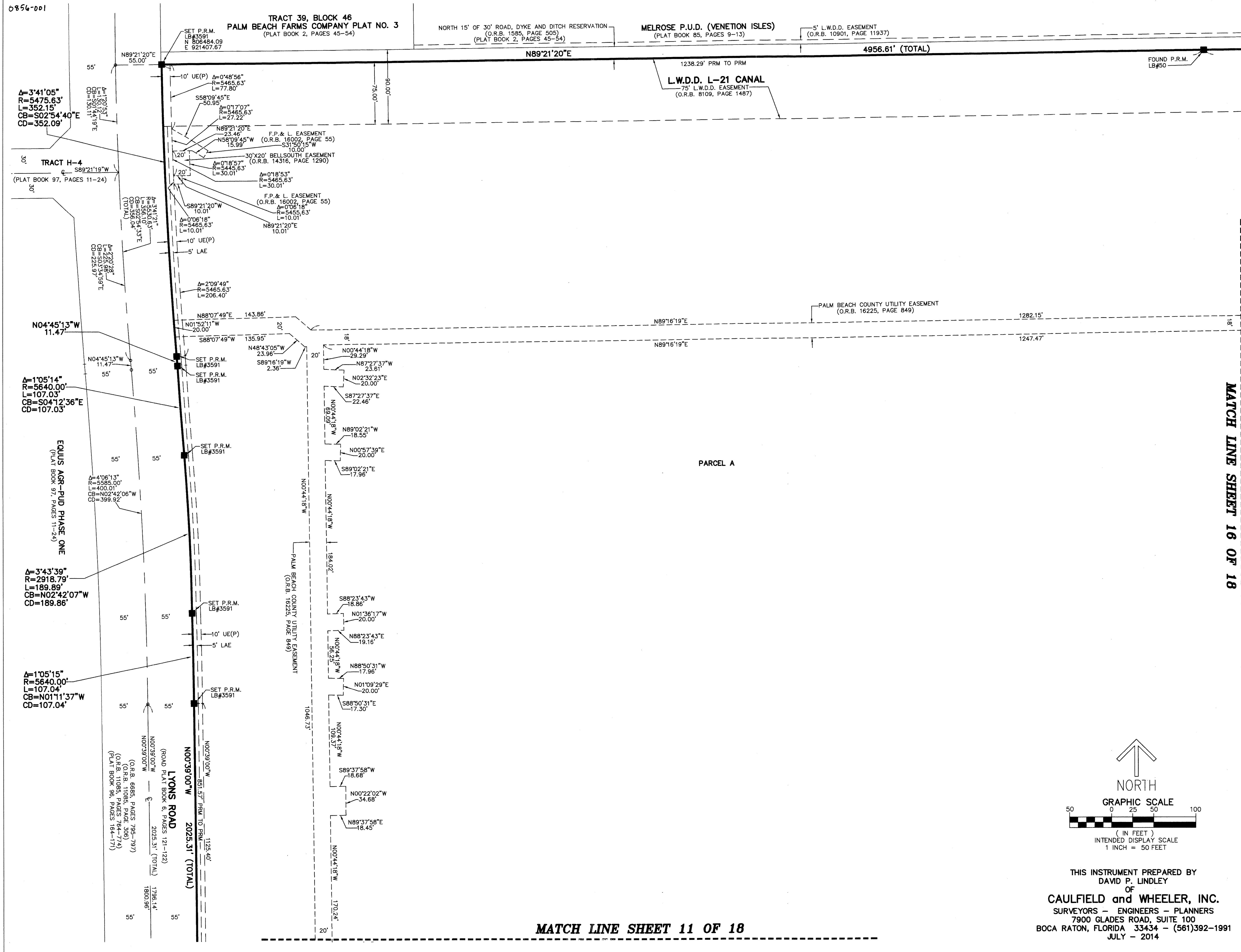
46

STATE OF FLORIDA
COUNTY OF PALM BEACH
THIS PLAT WAS FILED FOR
RECORD AT _____ M.
THIS _____ DAY OF _____
A.D. 20____ AND DULY RECORDED
IN PLAT BOOK _____ ON
PAGES _____ AND _____

SHARON R. BOCK
CLERK AND COMPTROLLER
BY: _____
DEPUTY CLERK

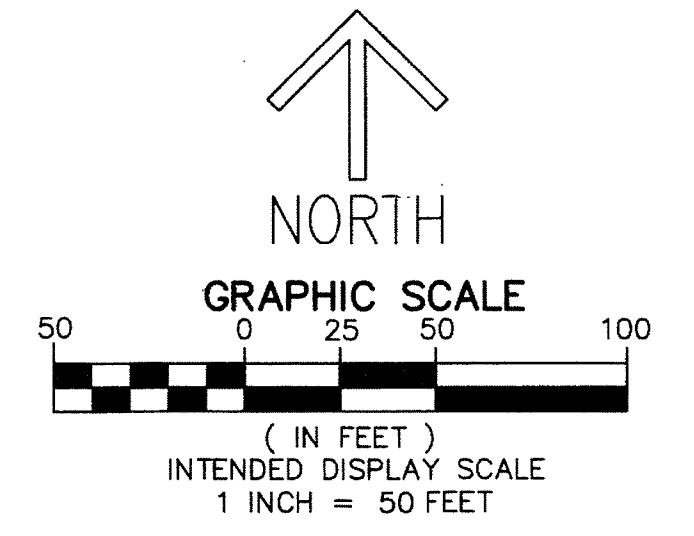
SHEET 15 OF 18

PALM MEADOWS ESTATES
A PLANNED UNIT DEVELOPMENT
BEING A REPLAT OF PARCEL A, PARCEL B, TRACTS A, B, C, D, L-1, L-2 AND L-3,
PALM BEACH THOROUGHbred TRAINING FARM, ACCORDING TO THE PLAT THEREOF,
AS RECORDED IN PLAT BOOK 96, PAGES 164 THROUGH 171, OF THE PUBLIC RECORDS OF PALM BEACH COUNTY, FLORIDA,
LYING IN SECTIONS 17, 18, 19 AND 20, TOWNSHIP 45 SOUTH, RANGE 42 EAST, PALM BEACH COUNTY, FLORIDA.



MATCH LINE SHEET 16 OF 18

MATCH LINE SHEET 11 OF 18



THIS INSTRUMENT PREPARED BY
DAVID P. LINDLEY
OF
CAULFIELD and WHEELER, INC.
SURVEYORS - ENGINEERS - PLANNERS
7900 GLADES ROAD, SUITE 100
BOCA RATON, FLORIDA 33434 - (561)392-1991
JULY - 2014

SHEET 11	SHEET 12	SHEET 13	SHEET 14
SHEET 15	SHEET 16	SHEET 17	SHEET 18

↑ SHEET INDEX
NORTH NOT TO SCALE