

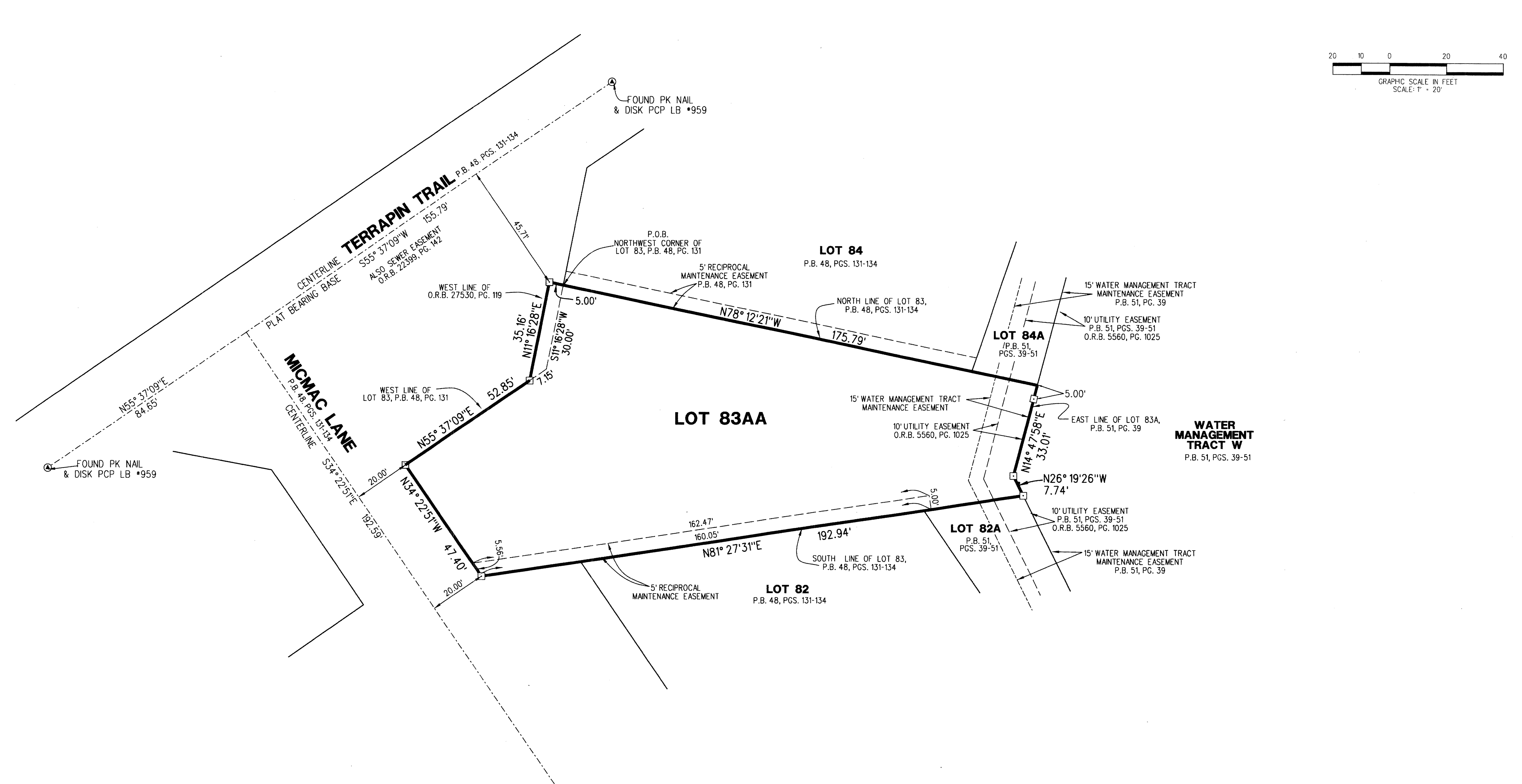
LOXAHATCHEE CLUB AT MAPLEWOOD PLAT NO. 20 OF PHASE II-REPLAT

53

LOT 83AA, BEING A REPLAT OF LOTS 83, 83A, AND A PORTION OF THE RIGHT OF WAY OF TERRAPIN TRAIL, AS SHOWN ON THE LOXAHATCHEE CLUB AT MAPLEWOOD PLAT NO. 1 OF PHASE II, RECORDED IN PLAT BOOK 48, PAGE 131 AND THE LOXAHATCHEE CLUB AT MAPLEWOOD, PLAT NO. 2 OF PHASE II, RECORDED IN PLAT BOOK 51, PAGE 39, PUBLIC RECORDS OF PALM BEACH COUNTY, FLORIDA, LYING IN SECTION 11, TOWNSHIP 41 SOUTH, RANGE 42 EAST, TOWN OF JUPITER, PALM BEACH COUNTY, FLORIDA.

MAY, 2015

SHEET 2 OF 2



		CAD. K:\UST \ 11412 \ 48-131 \ 15-027-306 \ 15-027-306	
		REF.	
FLD. K.F.	FB.	PG.	JOB 15-027-306
OFF. L.J.C.			DATE 04/2015
CKD. D.C.L.	SHEET 2	OF 2	DWC. 015-027P

LB4431 675 West Indiantown Road, Suite 200, Jupiter, Florida 33458 TEL. 561-746-8454