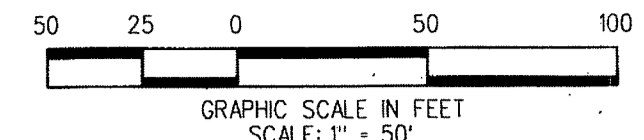


# TRUMP NATIONAL GOLF CLUB, JUPITER, A P.U.D.

BEING A REPLAT OF TRACTS "F", "G", "G-1", "I", "P-1" THROUGH "P-10", INCLUSIVE, "W1" THROUGH "W-7", INCLUSIVE, AND A PORTION OF TRACT "G-2", AS SHOWN ON RITZ-CARLTON GOLF CLUB & SPA REPLAT, JUPITER, A P.U.D., RECORDED IN PLAT BOOK 106, PAGES 97 THROUGH 119 AND A REPLAT OF TRACTS "G-3", "W-8A", "W-8B", "W-9" AND "W-10", AS SHOWN ON RITZ-CARLTON GOLF CLUB & SPA REPLAT NO. 3, JUPITER, A P.U.D., RECORDED IN PLAT BOOK 115, PAGES 177 THROUGH 179, ALL IN THE PUBLIC RECORDS OF PALM BEACH COUNTY, FLORIDA. LYING IN SECTION 19, TOWNSHIP 41 SOUTH, RANGE 43 EAST, TOWN OF JUPITER, PALM BEACH COUNTY, FLORIDA

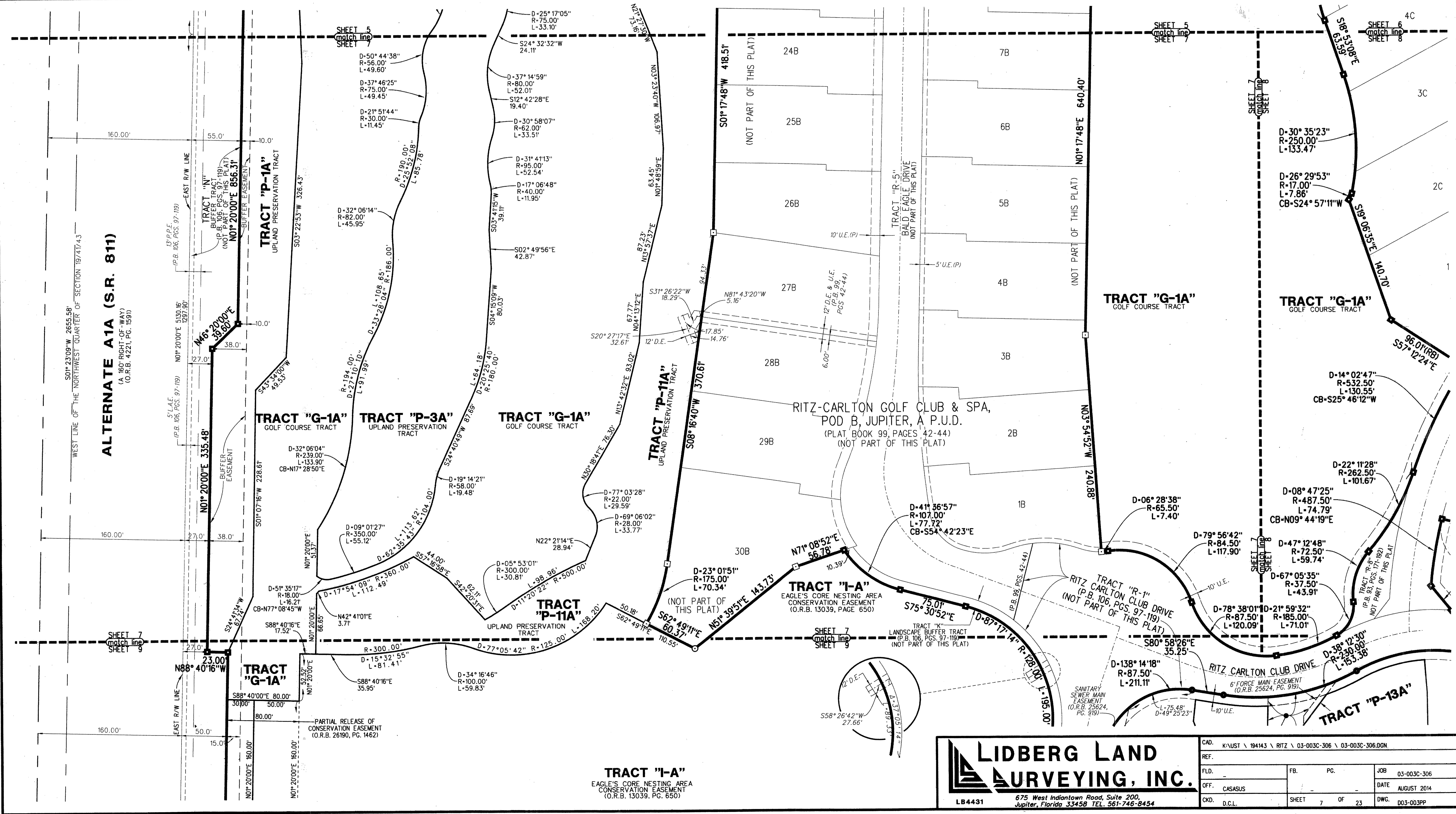
AUGUST 2014 SHEET 7 OF 23



60

### LEGEND:

- DENOTES PERMANENT REFERENCE MONUMENT (P.R.M.) SET 4"x4" CONCRETE MONUMENT WITH DISK STAMPED "PRM LB4431" UNLESS OTHERWISE NOTED
- DENOTES PERMANENT REFERENCE MONUMENT (P.R.M.) FOUND 4"x4" CONCRETE MONUMENT WITH DISK STAMPED "PRM LB4431" UNLESS OTHERWISE NOTED
- DENOTES PERMANENT REFERENCE MONUMENT (P.R.M.) SET MAG NAIL & DISK STAMPED "PRM LB4431" UNLESS OTHERWISE NOTED
- DENOTES PERMANENT REFERENCE MONUMENT (P.R.M.) FOUND MAG NAIL & DISK STAMPED "PRM LB4431" UNLESS OTHERWISE NOTED



**LIDBERG LAND SURVEYING, INC.**  
 675 West Indiantown Road, Suite 200, Jupiter, Florida 33458 TEL. 561-746-8454  
 LB4431

CAD. K:\N\194143 \ RITZ \ 03-003C-306 \ 03-003C-306.DGN			
REF.			
FLD.	FB.	PG.	JOB 03-003C-306
OFF. CASASUS			DATE AUGUST 2014
CKD. D.C.L.	SHEET 7	OF 23	DWG. 003-003PP