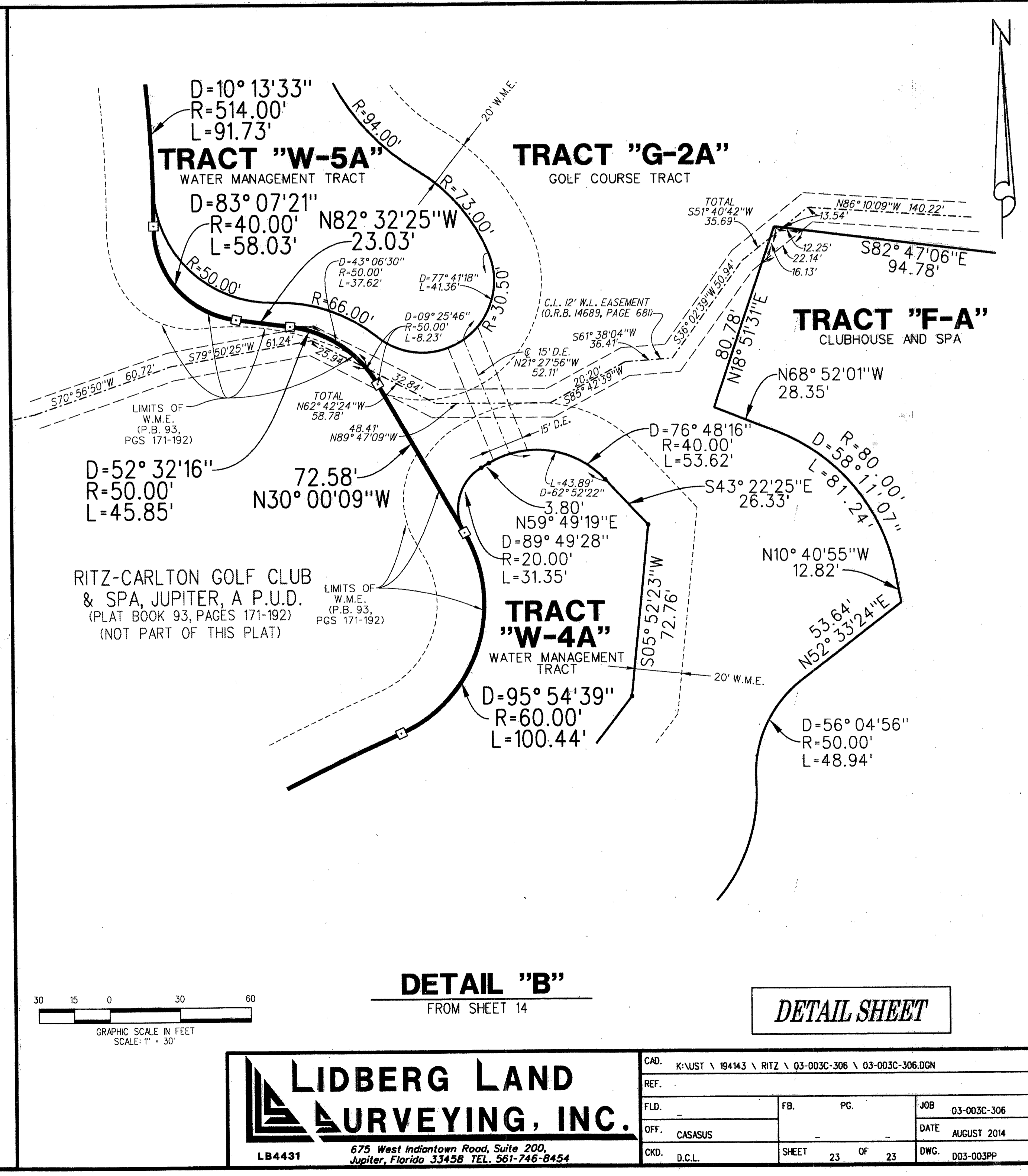
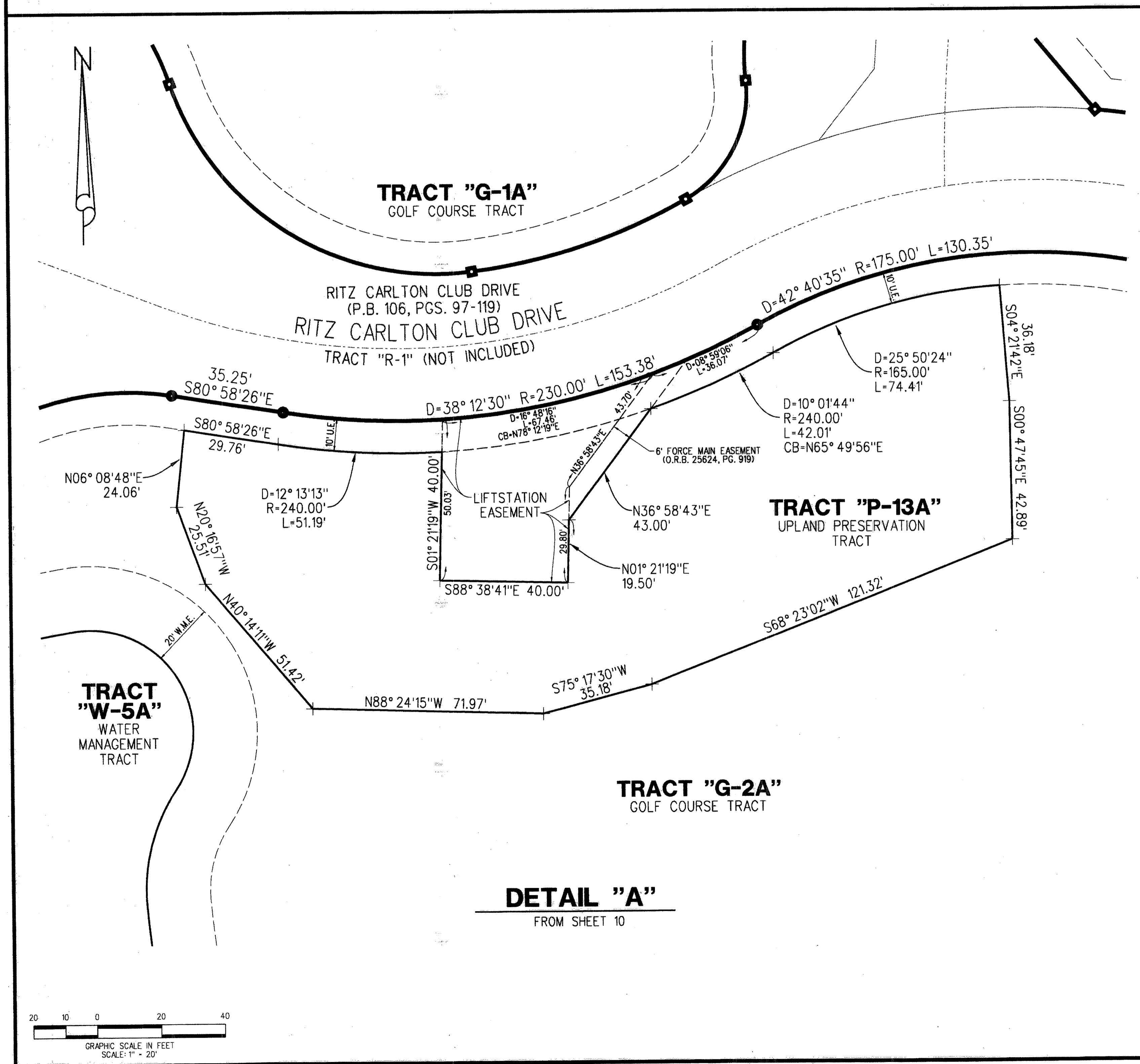


# TRUMP NATIONAL GOLF CLUB, JUPITER, A P.U.D.

BEING A REPLAT OF TRACTS "F", "G", "G-1", "I", "P-1" THROUGH "P-10", INCLUSIVE, "W1" THROUGH "W-7", INCLUSIVE,  
 AND A PORTION OF TRACT "G-2", AS SHOWN ON RITZ-CARLTON GOLF CLUB & SPA REPLAT, JUPITER, A P.U.D.,  
 RECORDED IN PLAT BOOK 106, PAGES 97 THROUGH 119 AND  
 A REPLAT OF TRACTS "G-3", "W-8A", "W-8B", "W-9" AND "W-10", AS SHOWN ON RITZ-CARLTON GOLF CLUB & SPA REPLAT NO. 3,  
 JUPITER, A P.U.D., RECORDED IN PLAT BOOK 115, PAGES 177 THROUGH 179,  
 ALL IN THE PUBLIC RECORDS OF PALM BEACH COUNTY, FLORIDA. LYING IN SECTION 19, TOWNSHIP 41 SOUTH, RANGE 43 EAST,  
 TOWN OF JUPITER, PALM BEACH COUNTY, FLORIDA

AUGUST 2014

SHEET 23 OF 23



**LIDBERG LAND SURVEYING, INC.**

675 West Indiantown Road, Suite 200,  
Jupiter, Florida 33458 TEL. 561-746-8454

CAD:	K:\JUST \ 194143 \ RITZ \ 03-003C-306 \ 03-003C-306.DGN		
REF.			
FLD.		PG.	JOB 03-003C-306
OFF.	CASASUS		DATE AUGUST 2014
CKD.	D.C.L.	SHEET 23 OF 23	DWG. 003-003PP