

PLAT OF CHURCH IN THE GARDENS

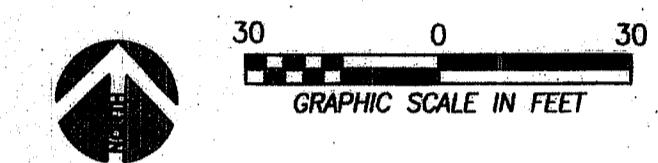
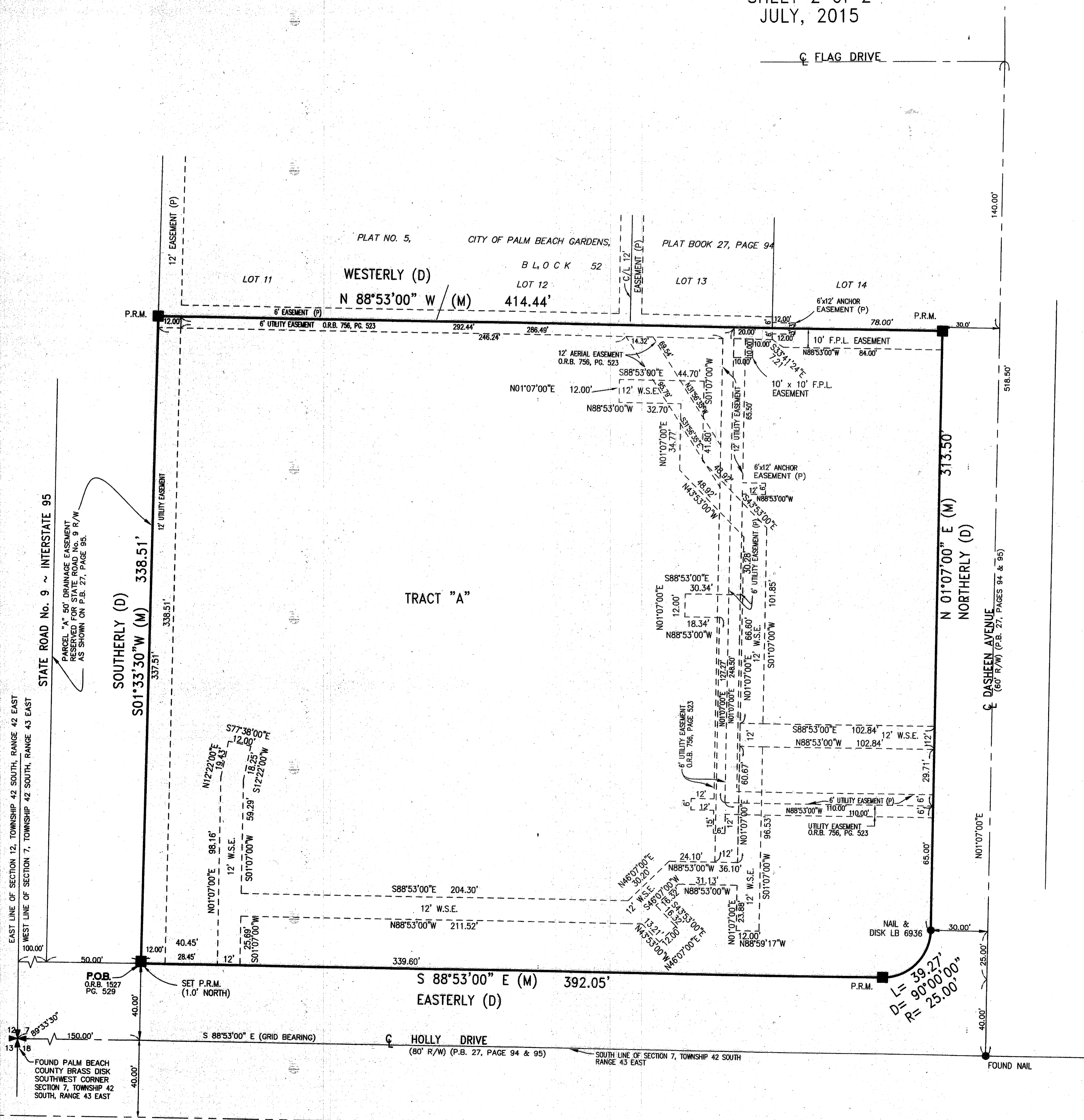
BEING A REPLAT OF LOTS 15, 16 AND 17, BLOCK 52, PLAT NO. 5
OF THE CITY OF PALM BEACH GARDENS, PLAT BOOK 27, PAGE 94
LYING IN SECTION 7, TOWNSHIP 42 SOUTH, RANGE 43 EAST
CITY OF PALM BEACH GARDENS, PALM BEACH COUNTY, FLORIDA

SHEET 2 of 2
JULY, 2015

94

STATE OF FLORIDA) S.S.
COUNTY OF PALM BEACH)

THIS INSTRUMENT WAS FILED FOR
RECORD AT _____ M.
THIS _____ DAY OF _____
2015 AND DULY RECORDED IN
PLAT BOOK _____
ON PAGE _____
SHARON R. BOCK
CLERK & COMPTROLLER
PALM BEACH COUNTY
BY: _____
DEPUTY CLERK



LEGEND:
D = DELTA
R = RADIUS
L = LENGTH
C/L = CENTERLINE
LB = LICENSED BUSINESS
O.R.B. = OFFICIAL RECORD BOOK
(P) = PLAT P.B. 27, PAGE 94
P.B. = PLAT BOOK
P.O.B. = POINT OF BEGINNING
P.R.M. = PERMANENT REFERENCE MONUMENT LB 6936
R/W = RIGHT OF WAY
W.S.E. = WATER AND SEWER EASEMENT
(D) = DESCRIPTION BEARING
(M) = MEASURED BEARING

SURVEYOR'S NOTES:
1. ALL DISTANCES ARE GROUND AND BASED ON THE U.S. SURVEY FOOT.
2. BEARINGS SHOWN HEREON ARE BASED ON THE SOUTH LINE OF SECTION 7, TOWNSHIP 42 SOUTH, RANGE 43 EAST WHICH HAS A GRID BEARING OF SOUTH 88°53'00\"/>

THIS INSTRUMENT WAS PREPARED BY RICHARD N. DEAN, P.S.M.
4406 IN THE OFFICES OF DEAN SURVEYING AND MAPPING,
INC. 4201 WESTGATE AVENUE, SUITE A3, WEST PALM BEACH,
FLORIDA, 33409 LB 6936

Dean Surveying & Mapping, Inc.
"The Measuring Line Shall Go Forth" Jeremiah 31:39
4201 Westgate Avenue
Suite A3
West Palm Beach, Florida 33409
Tel: (561) 625-8748 Facsimile: (561) 626-4558

FIELD:	DATE: 05-01-14
DRAWN: D.J.M.	SCALE: 1"=30'
SHEET: 2 of 2	JOB No.: 013-708