

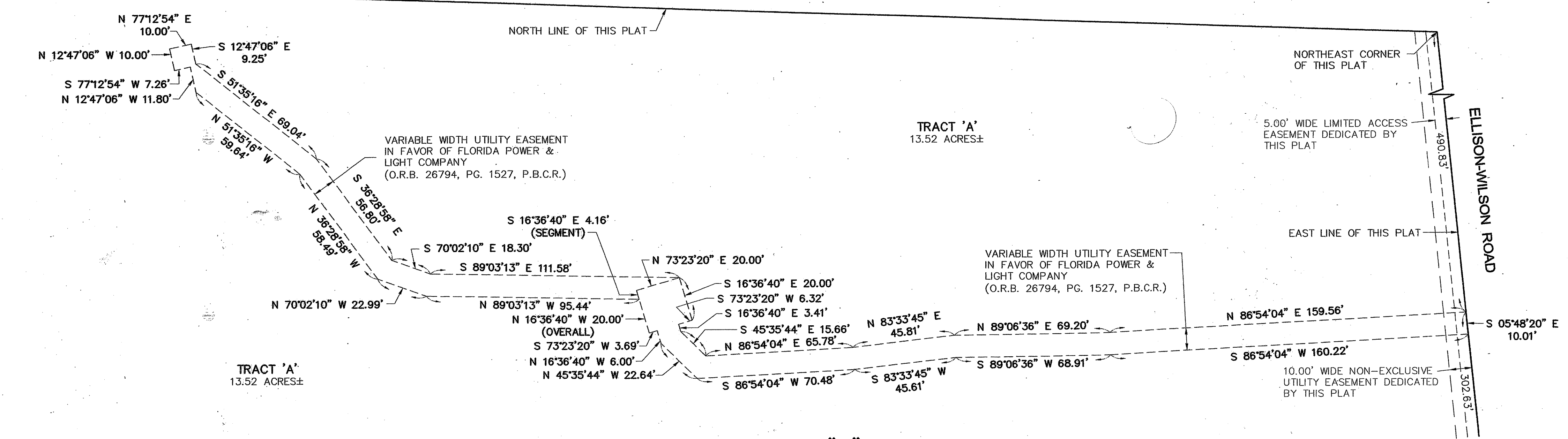
BERT WINTERS PARK

BEING A PLAT OF A PORTION OF SECTION 29, TOWNSHIP 41 SOUTH, RANGE 43 EAST
PALM BEACH COUNTY, FLORIDA
SHEET 3 OF 3

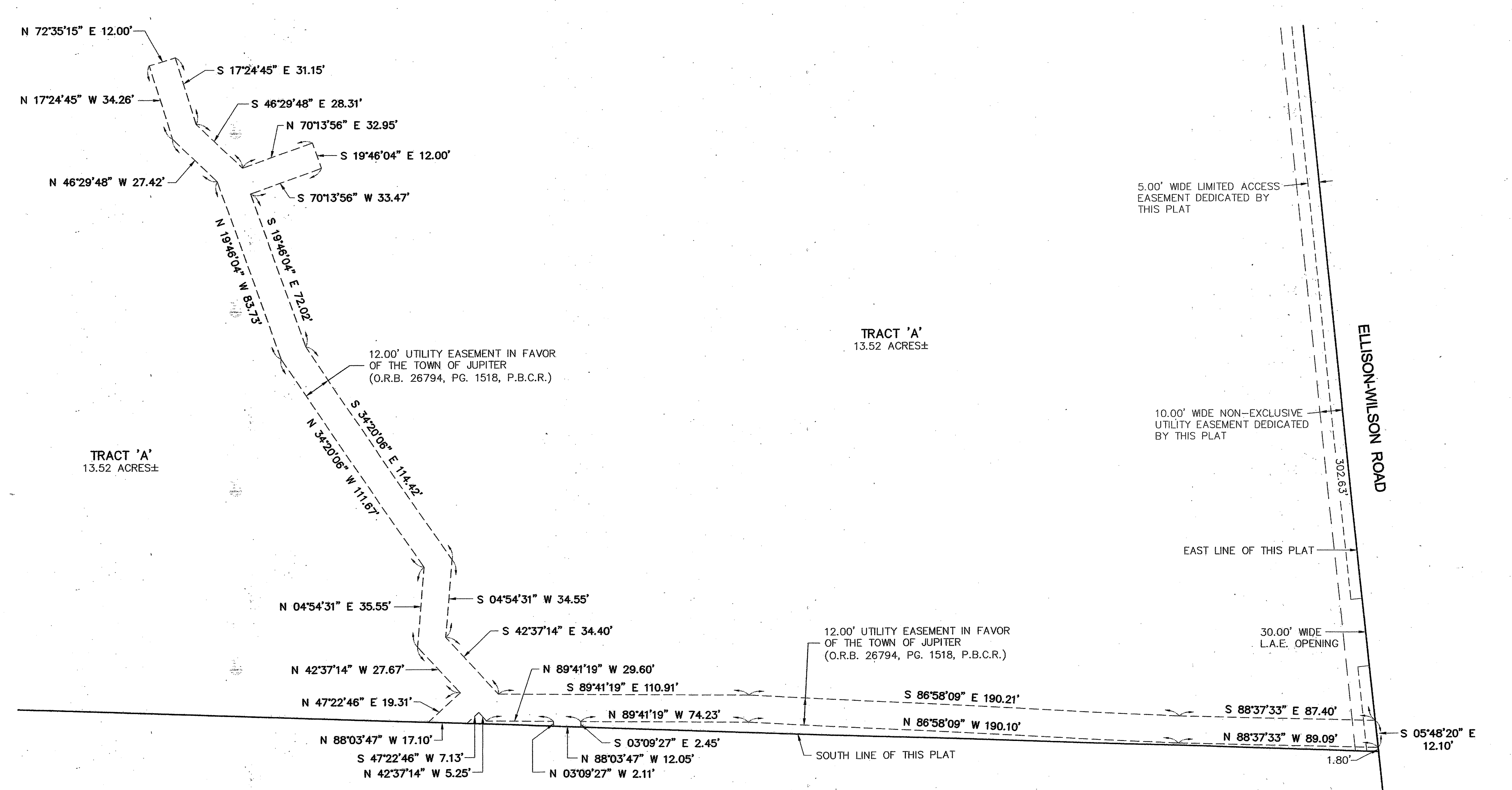
P. 106

STATE OF FLORIDA)
COUNTY OF PALM BEACH) S.S.

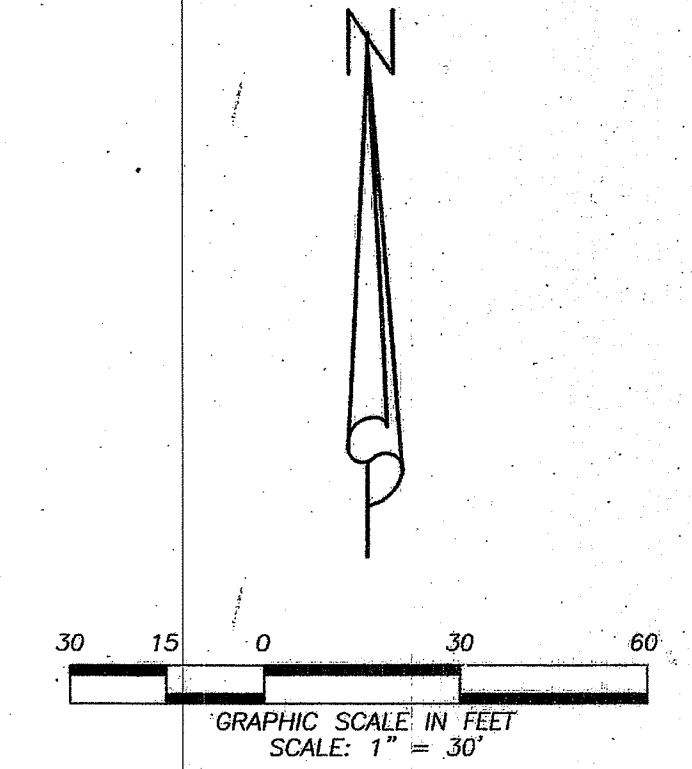
THIS INSTRUMENT WAS FILED FOR
RECORD AT _____ M.
THIS _____
DAY OF _____, 20____
AND DULY RECORDED IN:
PLAT BOOK _____
ON PAGE _____
SHARON R. BOCK
CLERK & COMPTROLLER
PALM BEACH COUNTY
BY: _____
DEPUTY CLERK



EASEMENT DETAIL "A"



EASEMENT DETAIL "B"



LEGEND

- L.A.E. = LIMITED ACCESS EASEMENT
- LB = LICENSED BUSINESS
- O.R.B. = OFFICIAL RECORD BOOK
- P = PARCEL 32, P.U.D. (PLAT BOOK 114, PAGES 80 THROUGH 97, P.B.C.R.)
- P.B. = PLAT BOOK
- P.B.C. = PALM BEACH COUNTY
- P.B.C.R. = PALM BEACH COUNTY RECORDS
- P.B.C.U.E. = PALM BEACH COUNTY UTILITY EASEMENT
- P.C.N. = PARCEL CONTROL NUMBER
- PG. = PAGE(S)
- P.R.M. = PERMANENT REFERENCE MONUMENT
- U.E. = UTILITY EASEMENT
- ☐ = PERMANENT REFERENCE MONUMENT (P.R.M.), 4" X 4" CONCRETE MONUMENT WITH P.K. NAIL IN BRASS DISC STAMPED "PRM LB 6599"

THIS INSTRUMENT WAS PREPARED BY:
DAVID A. BOWER, P.S.M. #5888 IN THE OFFICES
OF DENNIS J. LEAVY AND ASSOCIATES, INC.
CERTIFICATE OF AUTHORIZATION NUMBER: LB6599
460 BUSINESS PARK WAY, SUITE B
ROYAL PALM BEACH, FLORIDA 33411
PHONE: (561) 753 - 0650
FAX: (561) 753 - 0290

DENNIS J. LEAVY & ASSOCIATES, INC.
LAND SURVEYORS AND MAPPERS

460 BUSINESS PARK WAY * SUITE B * ROYAL PALM BEACH, FL * 33411
PHONE: (561) 753-0650 FAX: (561) 753-0290

SCALE: AS SHOWN CHECKED BY: GHC DATE: 07/10/13
DRAWN BY: DAB JOB NO.: 12-085-01