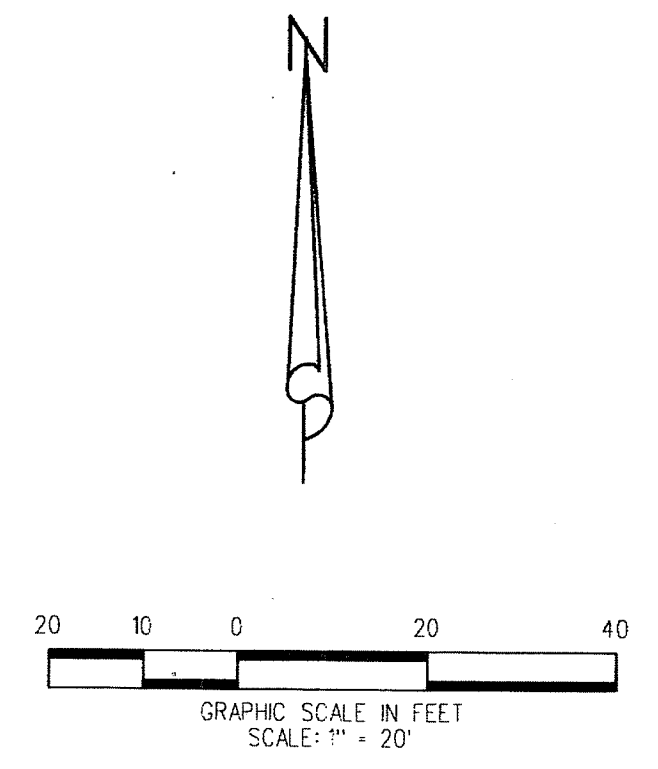
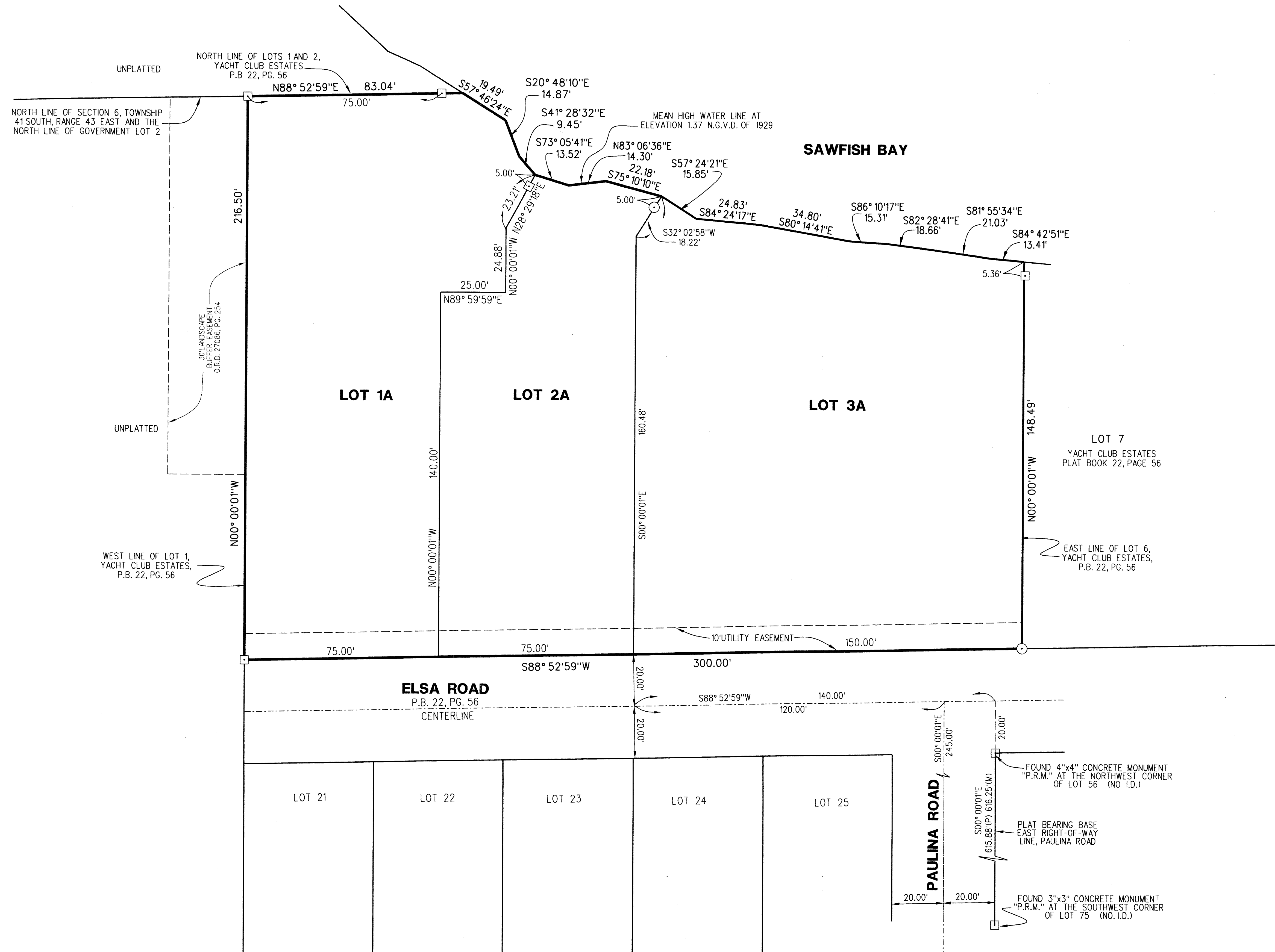



119

YACHT CLUB ESTATES - REPLAT NO. 1

BEING A REPLAT OF LOTS 1 THROUGH 6, INCLUSIVE, AS SHOWN ON THE PLAT OF YACHT CLUB ESTATES, RECORDED IN PLAT BOOK 22, PAGE 56, PUBLIC RECORDS OF PALM BEACH COUNTY, FLORIDA, IN GOVERNMENT LOT 2, SECTION 6, TOWNSHIP 41 SOUTH, RANGE 43 EAST, TOWN OF JUPITER, PALM BEACH COUNTY, FLORIDA
JULY 2015 SHEET 2 OF 2





LIDBERG LAND SURVEYING, INC.

LB4431 675 West Indiantown Road, Suite 200
Jupiter, Florida 33458 TEL. 561-746-8454

CAD: K:\JUST \ 064143 \ 22-56 \ 14-101-306-1 \ 14-101-306-1.DGN			
REF.			
FLD.		FB. PG.	JOB 14-101-306-1
OFF. L.J.C.			DATE 04/28/15
CKD. D.C.L.	SHEET 2	OF 2	DWG. D14-101P