

# JUPITER COUNTRY CLUB POD D REPLAT

A PLANNED UNIT DEVELOPMENT, BEING A REPLAT OF POD D, JUPITER COUNTRY CLUB, ACCORDING TO THE PLAT THEREOF, AS RECORDED IN PLAT BOOK 108, PAGES 164 THROUGH 181 OF THE PUBLIC RECORDS OF PALM BEACH COUNTY, FLORIDA, LYING IN SECTION 8, TOWNSHIP 41 SOUTH, RANGE 42 EAST, TOWN OF JUPITER, PALM BEACH COUNTY, FLORIDA

THIS INSTRUMENT PREPARED BY  
DAVID P. LINDLEY  
OF  
**CAULFIELD and WHEELER, INC.**  
SURVEYORS - ENGINEERS - PLANNERS  
7301-A WEST PALMETTO PARK ROAD, SUITE 100A  
BOCA RATON, FLORIDA 33433 - (561)392-1991  
APRIL - 2015

TRACT GC  
JUPITER COUNTRY CLUB  
(PLAT BOOK 108, PAGES 164-181)

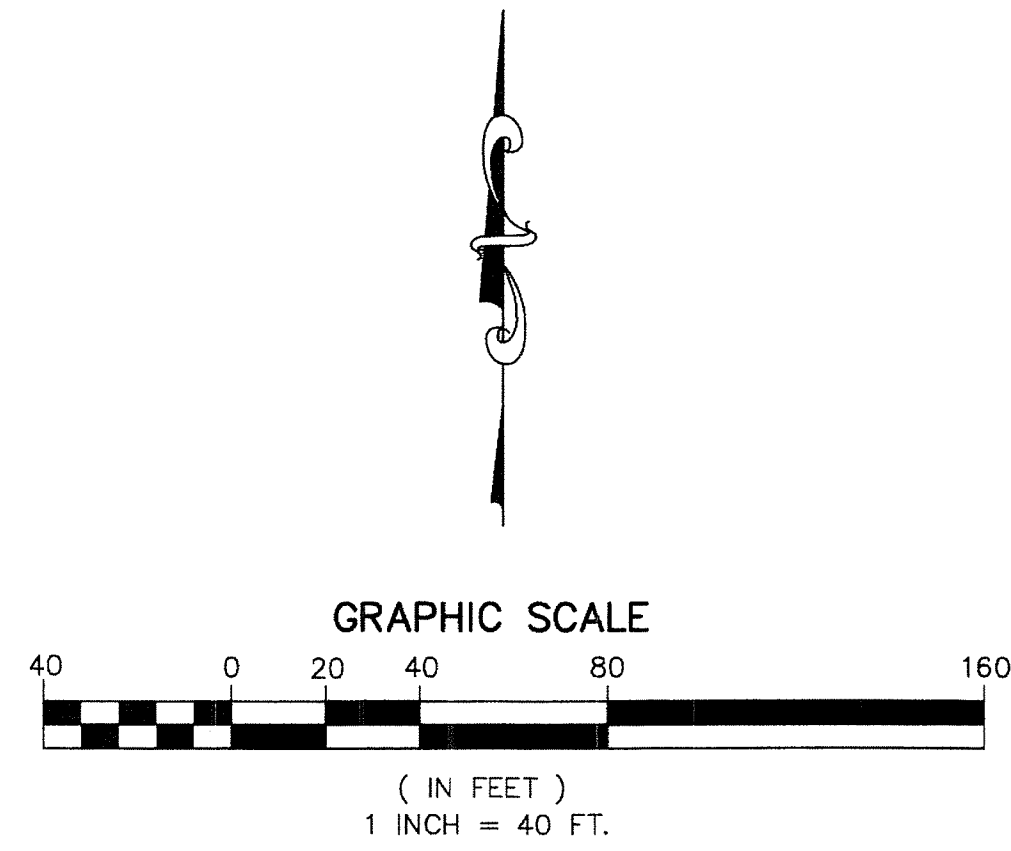
POINT OF BEGINNING  
N.E. CORNER OF POD D  
JUPITER COUNTRY CLUB  
(PLAT BOOK 108, PAGES 164-181)

**144**

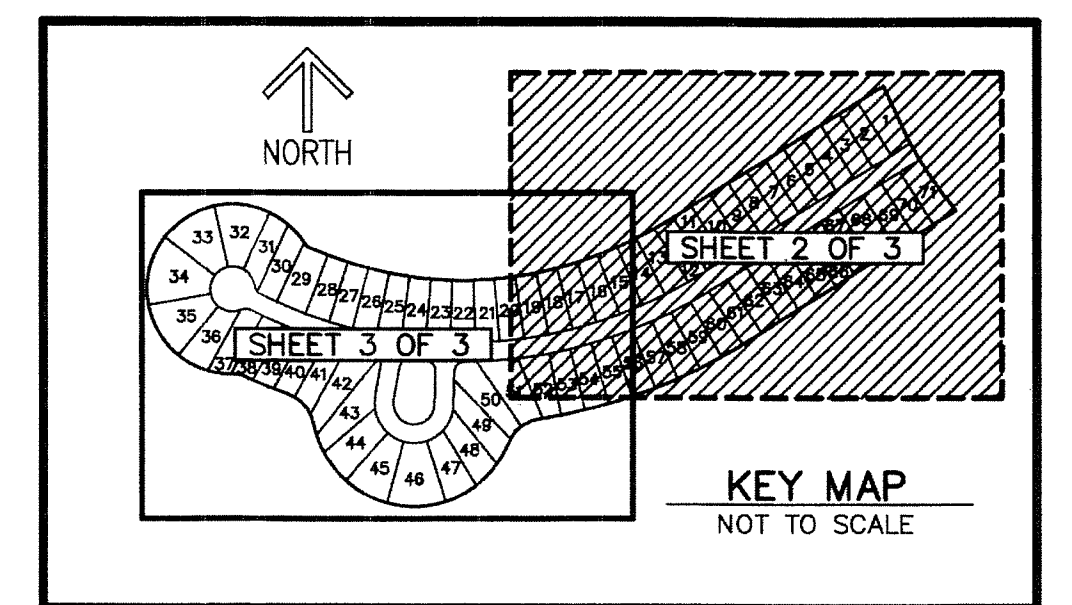
STATE OF FLORIDA  
COUNTY OF PALM BEACH  
THIS PLAT WAS FILED FOR  
RECORD AT \_\_\_\_\_ M.  
THIS \_\_\_\_\_ DAY OF \_\_\_\_\_  
A.D. 2015 AND DULY RECORDED  
IN PLAT BOOK \_\_\_\_\_ ON  
PAGES \_\_\_\_\_ AND \_\_\_\_\_

SHARON R. BOCK  
CLERK AND COMPTROLLER

BY: \_\_\_\_\_  
DEPUTY CLERK



**SHEET 2 OF 3**



### NOTES COORDINATES, BEARINGS AND DISTANCES

COORDINATES SHOWN ARE GRID  
DATUM = NAD 83 1990 ADJUSTMENT  
ZONE = FLORIDA EAST  
LINEAR UNIT = US SURVEY FEET  
COORDINATE SYSTEM 1983 STATE PLANE  
TRANSVERSE MERCATOR PROJECTION  
ALL DISTANCES ARE GROUND  
SCALE FACTOR = 1.0000256  
GROUND DISTANCE X SCALE FACTOR = GRID DISTANCE  
BEARINGS AS SHOWN HEREON ARE GRID DATUM,  
NAD 83 1990 ADJUSTMENT, FLORIDA EAST ZONE.

### COORDINATE TABLE

PRM	NORTHING	EASTING
1	942709.78	929187.25
2	943075.78	929765.38
3	942991.15	929803.08
4	942747.00	929953.97
5	942742.85	929957.39
6	942385.33	929392.64
7	942183.89	928847.97
8	942122.35	928769.59
9	942173.12	928250.20
10	942248.66	928185.23
11	942299.89	928059.76
12	942302.21	928047.95
13	942649.29	928229.10
14	942639.68	928240.17

NORTHERN PALM BEACH COUNTY IMPROVEMENT DISTRICT LAND USE CLASSIFICATION				LOT 33	16,687	0.383	SFP
SINGLE FAMILY (OTHER) - SFP				LOT 34	20,341	0.467	SFP
EXEMPT ACREAGE - EXM				LOT 35	16,687	0.383	SFP
TABULAR DATA				LOT 36	12,347	0.284	SFP
TRACT C	16,530	0.380	EXM	LOT 37	11,012	0.253	SFP
TRACT R	132,630	3.045	EXM	LOT 38	9,981	0.229	SFP
LOT 1	11,655	0.268	SFP	LOT 39	9,917	0.228	SFP
LOT 2	9,686	0.222	SFP	LOT 40	9,988	0.229	SFP
LOT 3	9,686	0.222	SFP	LOT 41	10,863	0.249	SFP
LOT 4	9,686	0.222	SFP	LOT 42	15,468	0.355	SFP
LOT 5	9,686	0.222	SFP	LOT 43	14,780	0.339	SFP
LOT 6	9,686	0.222	SFP	LOT 44	13,937	0.320	SFP
LOT 7	9,686	0.222	SFP	LOT 45	14,558	0.334	SFP
LOT 8	9,686	0.222	SFP	LOT 46	18,532	0.425	SFP
LOT 9	9,686	0.222	SFP	LOT 47	11,901	0.273	SFP
LOT 10	9,686	0.222	SFP	LOT 48	11,643	0.267	SFP
LOT 11	9,686	0.222	SFP	LOT 49	12,670	0.291	SFP
LOT 12	9,686	0.222	SFP	LOT 50	14,064	0.323	SFP
LOT 13	10,491	0.241	SFP	LOT 51	14,926	0.343	SFP
LOT 14	10,187	0.234	SFP	LOT 52	11,166	0.256	SFP
LOT 15	10,187	0.234	SFP	LOT 53	10,230	0.235	SFP
LOT 16	10,187	0.234	SFP	LOT 54	10,230	0.235	SFP
LOT 17	10,187	0.234	SFP	LOT 55	10,230	0.235	SFP
LOT 18	10,187	0.234	SFP	LOT 56	10,230	0.235	SFP
LOT 19	10,187	0.234	SFP	LOT 57	10,230	0.235	SFP
LOT 20	10,187	0.234	SFP	LOT 58	10,230	0.235	SFP
LOT 21	10,187	0.234	SFP	LOT 59	10,230	0.235	SFP
LOT 22	10,187	0.234	SFP	LOT 60	10,253	0.235	SFP
LOT 23	10,187	0.234	SFP	LOT 61	9,785	0.225	SFP
LOT 24	10,187	0.234	SFP	LOT 62	10,104	0.232	SFP
LOT 25	10,187	0.234	SFP	LOT 63	9,435	0.217	SFP
LOT 26	10,187	0.234	SFP	LOT 64	9,770	0.225	SFP
LOT 27	10,187	0.234	SFP	LOT 65	9,769	0.224	SFP
LOT 28	10,187	0.234	SFP	LOT 66	9,769	0.224	SFP
LOT 29	12,859	0.295	SFP	LOT 67	9,769	0.224	SFP
LOT 30	10,874	0.250	SFP	LOT 68	12,274	0.282	SFP
LOT 31	10,320	0.237	SFP	LOT 69	9,769	0.224	SFP
LOT 32	16,185	0.372	SFP	LOT 70	9,769	0.224	SFP
				LOT 71	10,687	0.245	SFP
				TOTAL AREA THIS PLAT	945,126	21.697	