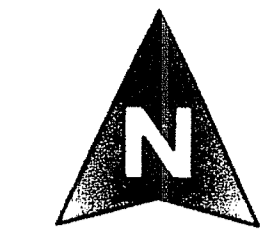


SONOMA ISLES

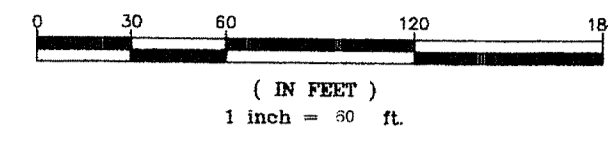
LYING IN SECTION 32, TOWNSHIP 40 SOUTH, RANGE 42 EAST AND SECTION 5, TOWNSHIP 41 SOUTH, RANGE 42 EAST,
TOWN OF JUPITER, PALM BEACH COUNTY, FLORIDA, BEING A RE-PLAT OF TRACT B, E, H, LK-3, PARCEL 1 AND A PORTION OF TRACT A (MARSALA COURT), PLAT OF
PARCEL 19 NORTH - PUD, AS RECORDED IN PLAT BOOK 109, PAGES 176 THROUGH 193, INCLUSIVE, PUBLIC RECORDS OF PALM BEACH COUNTY, FLORIDA

SHEET 3 OF 13

OCTOBER, 2015

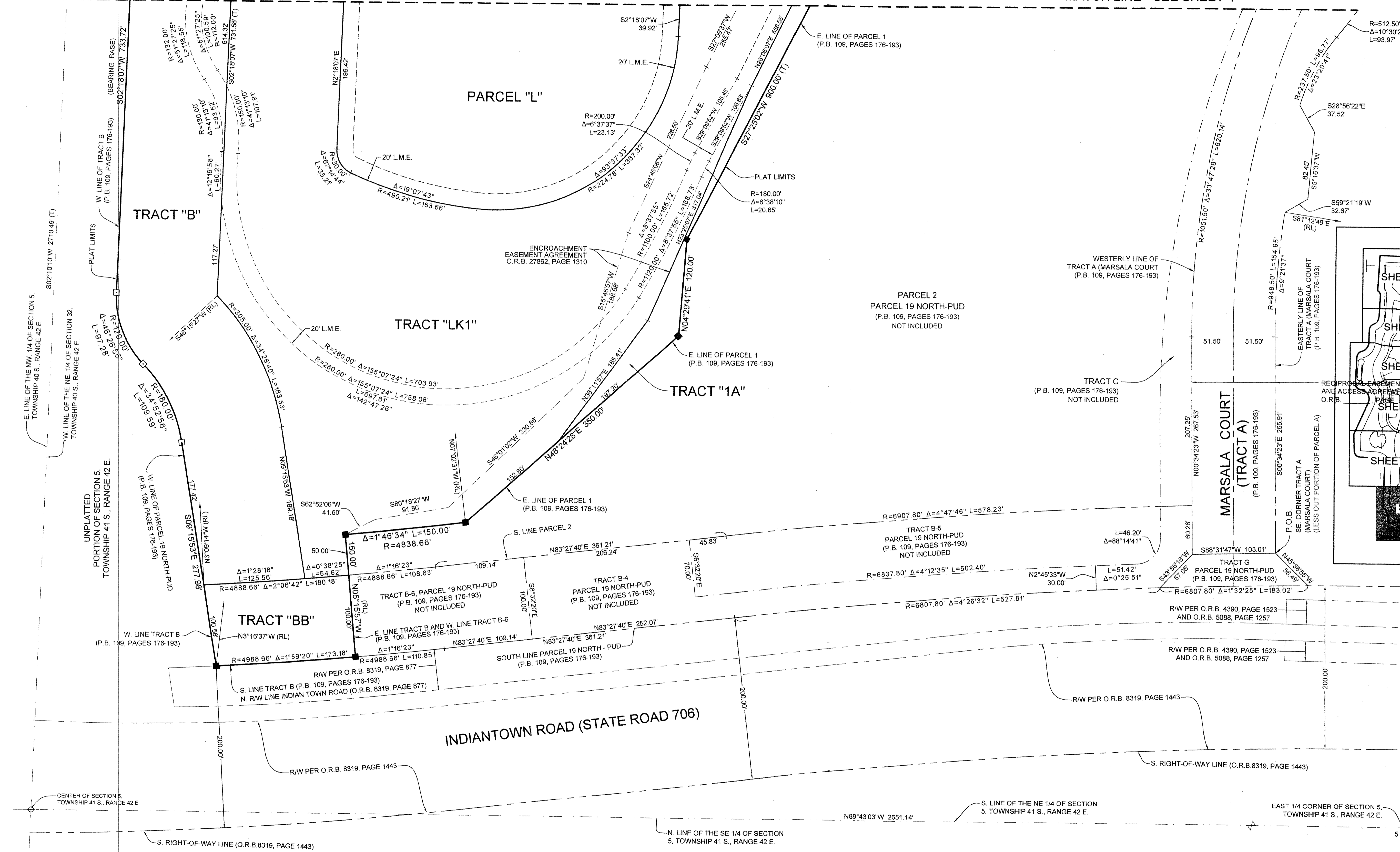


GRAPHIC SCALE



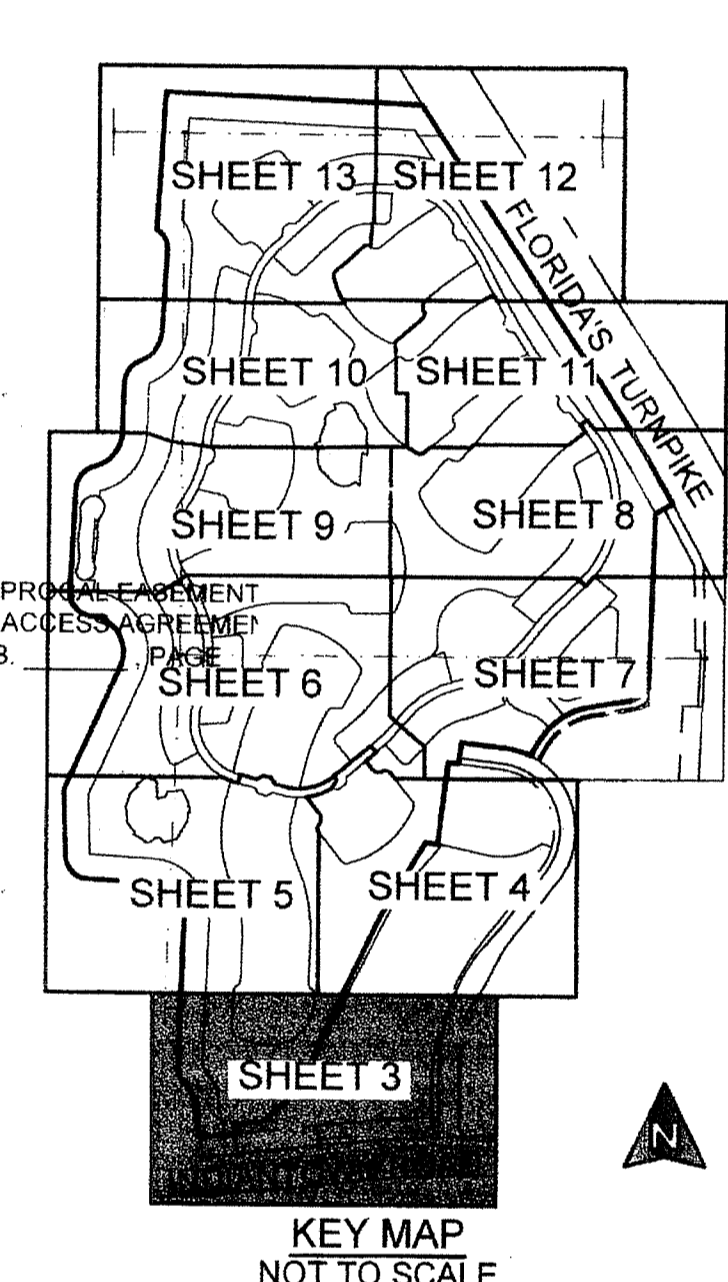
MATCH LINE - SEE SHEET 5

MATCH LINE - SEE SHEET 4

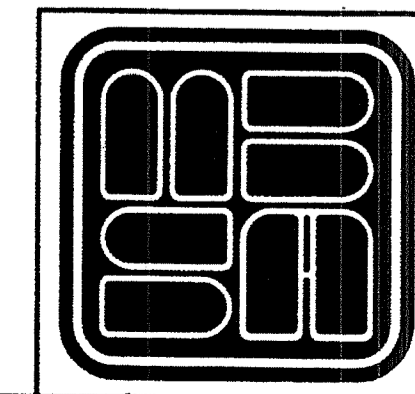


169

COUNTY OF PALM BEACH)
STATE OF FLORIDA) SS
THIS PLAT WAS FILED FOR RECORD AT _____ M. THIS DAY OF _____ 2015, AND DULY
RECORDED IN PLAT BOOK NO. _____
ON PAGE _____ THRU _____
SHARON R. BOCK,
CLERK AND COMPTROLLER
BY: _____, D.C.



SHEET 3 OF 13



MICHAEL B. SCHORAH & ASSOCIATES, INC.
1850 FOREST HILL BLVD., SUITE 206
WEST PALM BEACH, FLORIDA 33406
EB# 2438 TEL. (561) 968-0080 FAX. (561) 642-9726 LB# 2438

SONOMA ISLES