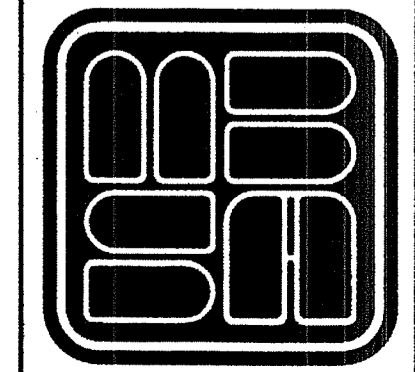
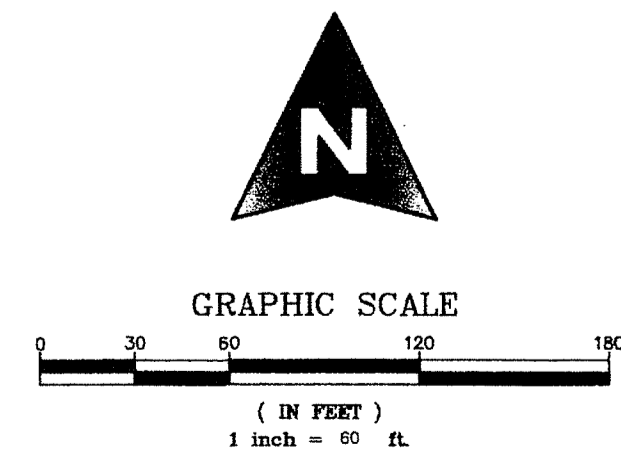
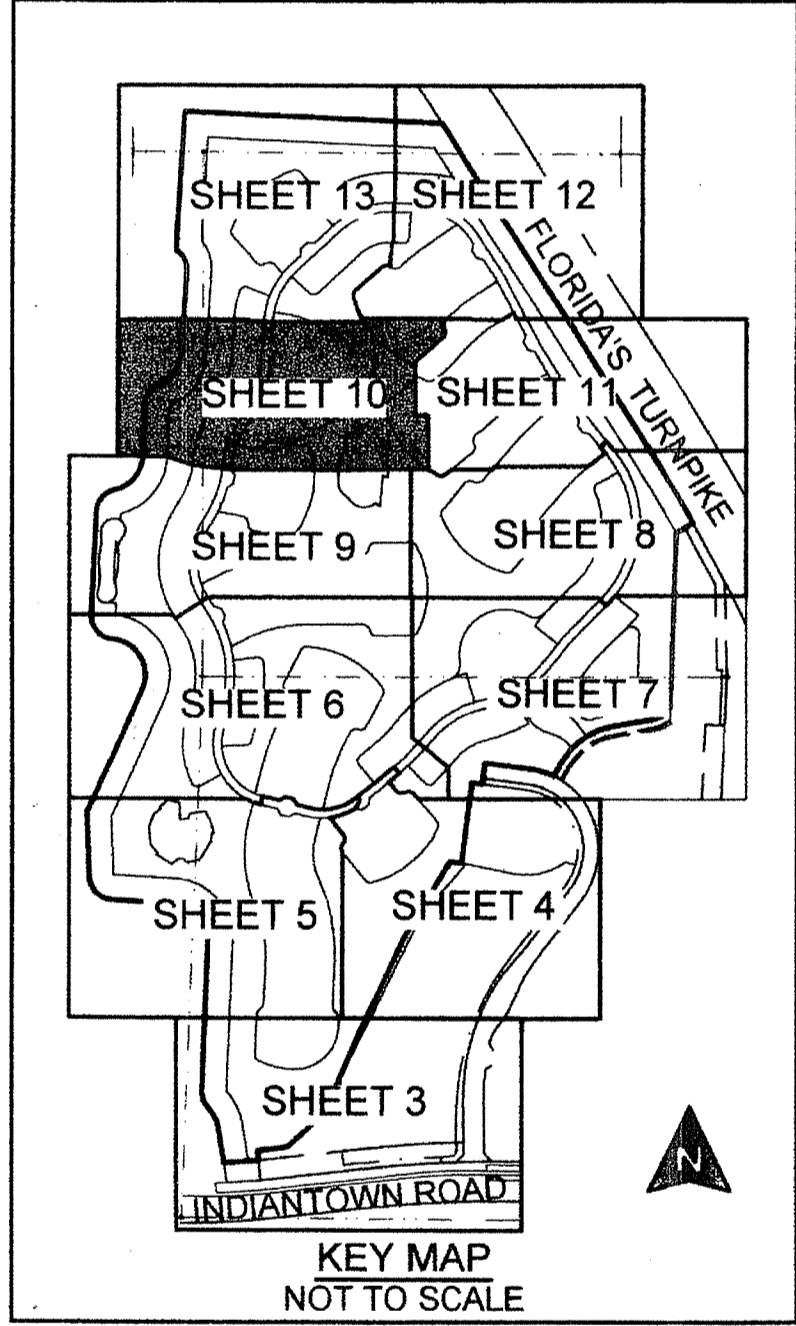
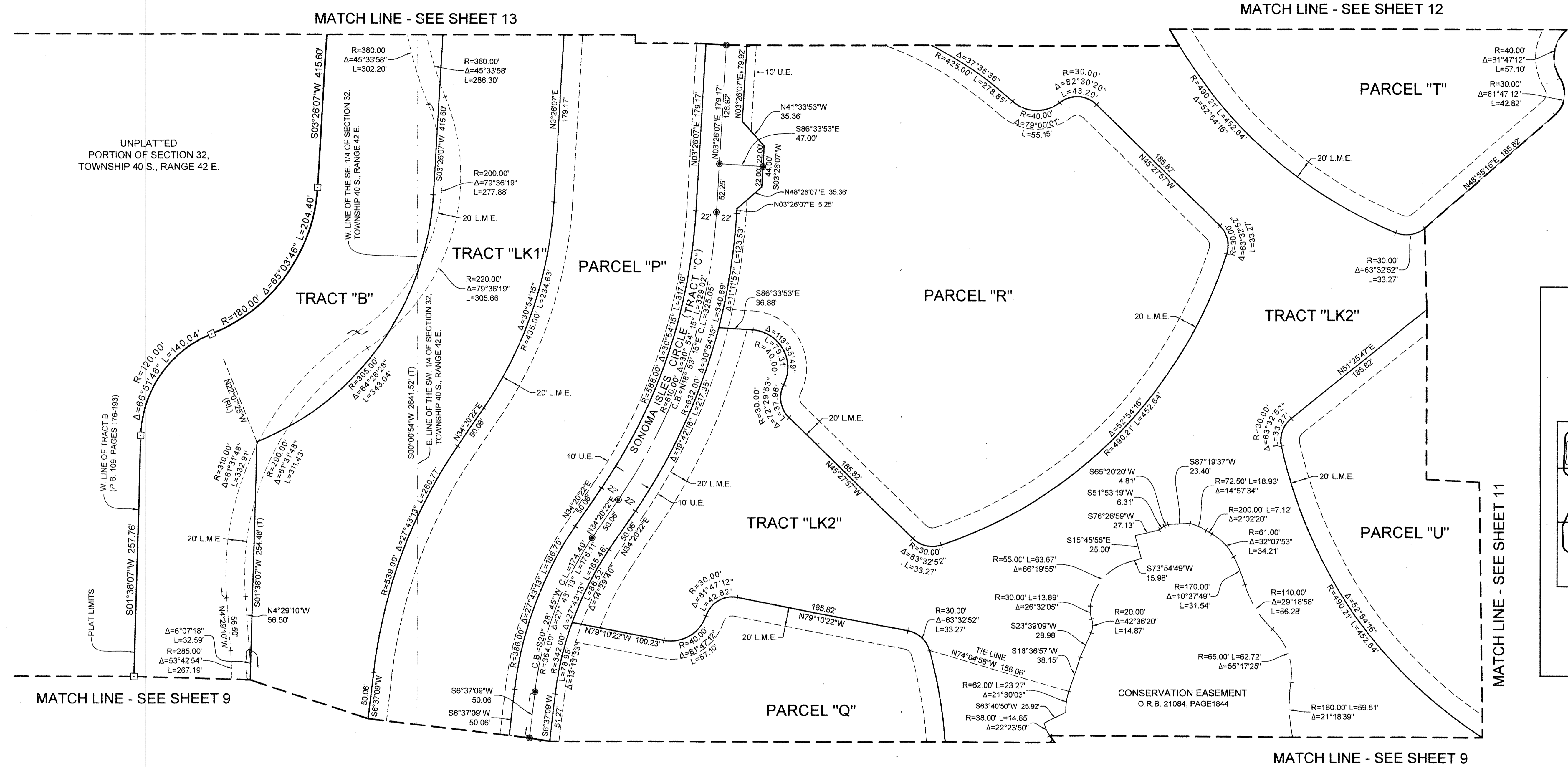


SONOMA ISLES

LYING IN SECTION 32, TOWNSHIP 40 SOUTH, RANGE 42 EAST AND SECTION 5, TOWNSHIP 41 SOUTH, RANGE 42 EAST,
TOWN OF JUPITER, PALM BEACH COUNTY, FLORIDA, BEING A RE-PLAT OF TRACT B, E, H, LK-3, PARCEL 1 AND A PORTION OF TRACT A (MARSALA COURT),
PLAT OF PARCEL 19 NORTH - PUD, AS RECORDED IN PLAT BOOK 109, PAGES 176 THROUGH 193, INCLUSIVE, PUBLIC RECORDS OF PALM BEACH COUNTY, FLORIDA
SHEET 10 OF 13 OCTOBER, 2015

176

COUNTY OF PALM BEACH }
STATE OF FLORIDA } SS
THIS PLAT WAS FILED FOR RECORD AT _____ M. THIS _____ DAY OF _____, 2015, AND DULY RECORDED IN PLAT BOOK NO. _____ ON PAGE _____ THRU _____
SHARON R. BOCK
CLERK AND COMPTROLLER
BY: _____, D.C.



MICHAEL B. SCHORAH & ASSOCIATES, INC.
1850 FOREST HILL BLVD., SUITE 206
WEST PALM BEACH, FLORIDA 33406
EB# 2438 TEL. (561) 968-0080 FAX. (561) 642-9726 LB# 2438

SONOMA ISLES