

SONOMA ISLES

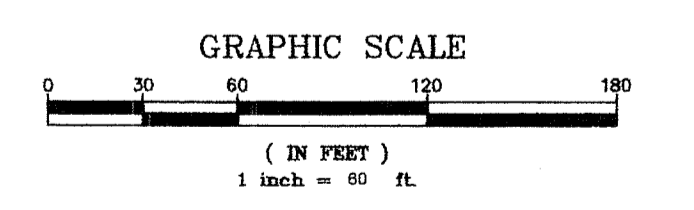
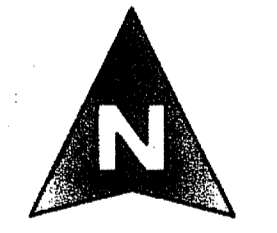
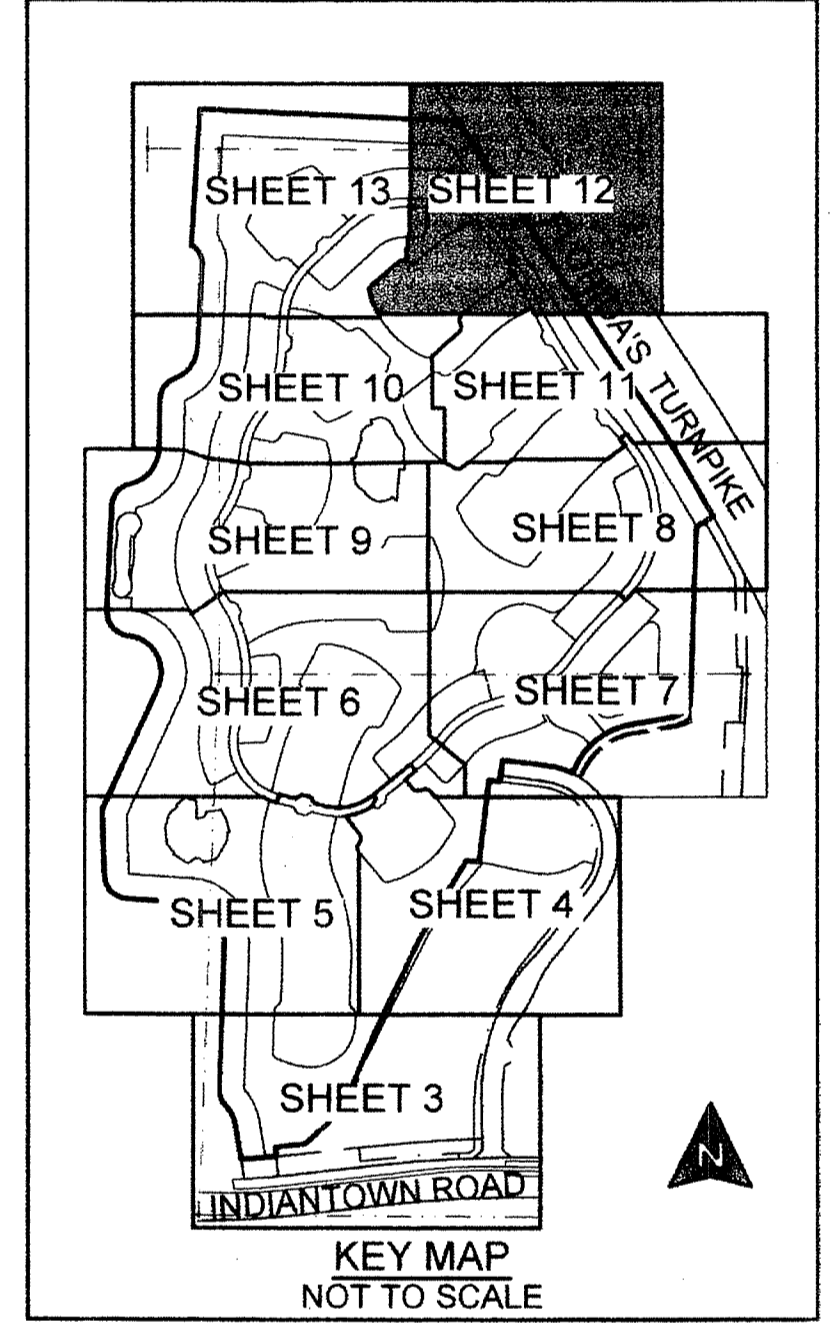
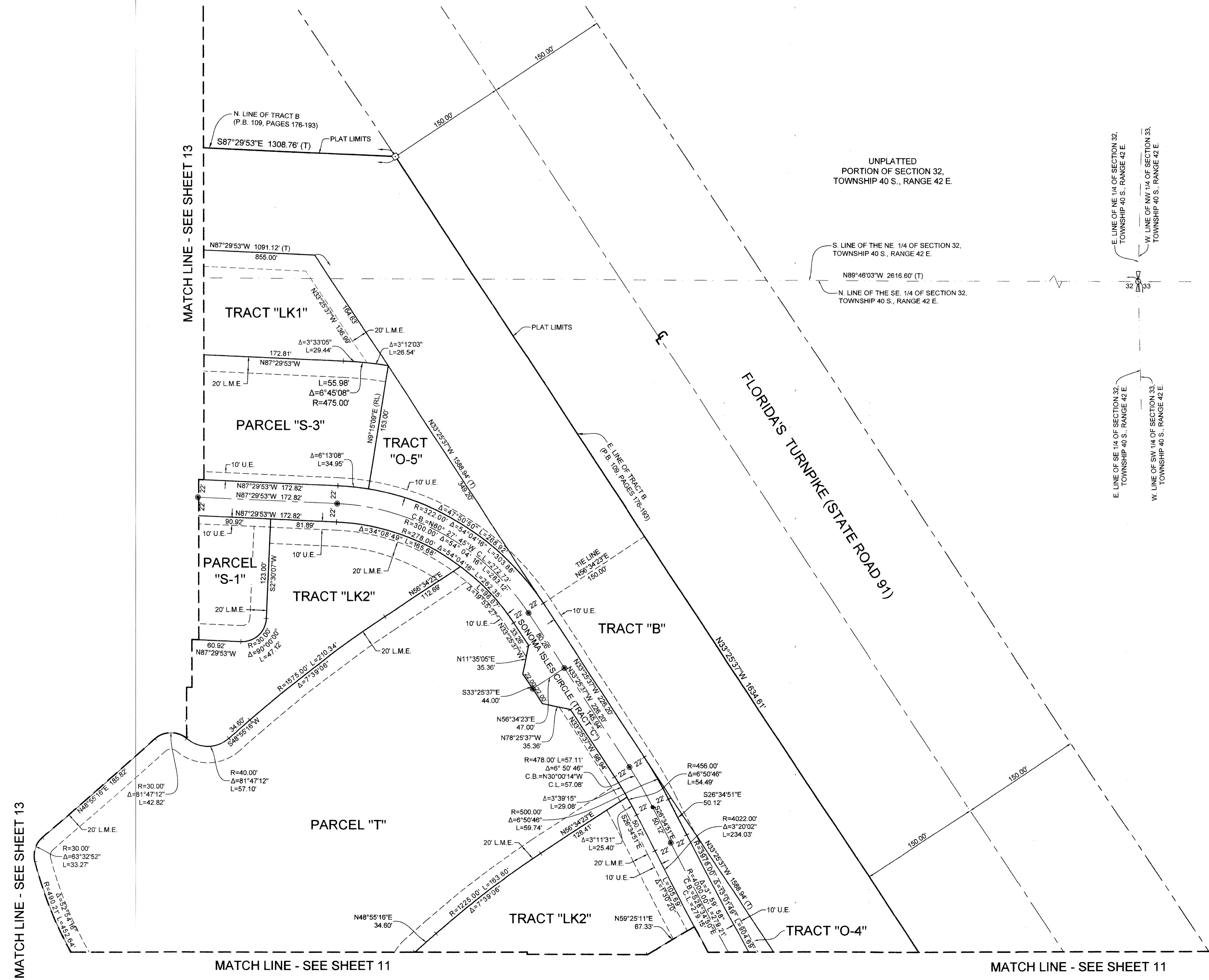
LYING IN SECTION 32, TOWNSHIP 40 SOUTH, RANGE 42 EAST AND SECTION 5, TOWNSHIP 41 SOUTH, RANGE 42 EAST,
TOWN OF JUPITER, PALM BEACH COUNTY, FLORIDA, BEING A RE-PLAT OF TRACT B, E, H, LK-3, PARCEL 1 AND A PORTION OF TRACT A (MARSALA COURT),
PLAT OF PARCEL 19 NORTH - PUD, AS RECORDED IN PLAT BOOK 109, PAGES 176 THROUGH 193, INCLUSIVE, PUBLIC RECORDS OF PALM BEACH COUNTY, FLORIDA

SHEET 12 OF 13

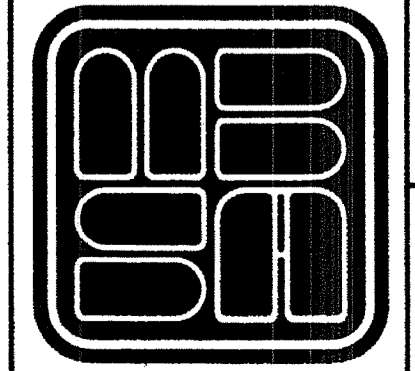
OCTOBER, 2015

178

COUNTY OF PALM BEACH)
STATE OF FLORIDA) SS
THIS PLAT WAS FILED FOR RECORD AT)
M. THIS) DAY OF)
2015, AND DULY)
RECORDED IN PLAT BOOK NO.)
ON PAGE) THRU)
SHARON R. BOCK,
CLERK AND COMPTROLLER
BY:) D.C.



SHEET 12 OF 13



MICHAEL B. SCHORAH & ASSOCIATES, INC.
1850 FOREST HILL BLVD., SUITE 206
WEST PALM BEACH, FLORIDA 33406
EB# 2438 TEL. (561) 968-0080 FAX. (561) 642-9726 LB# 2438

SONOMA ISLES