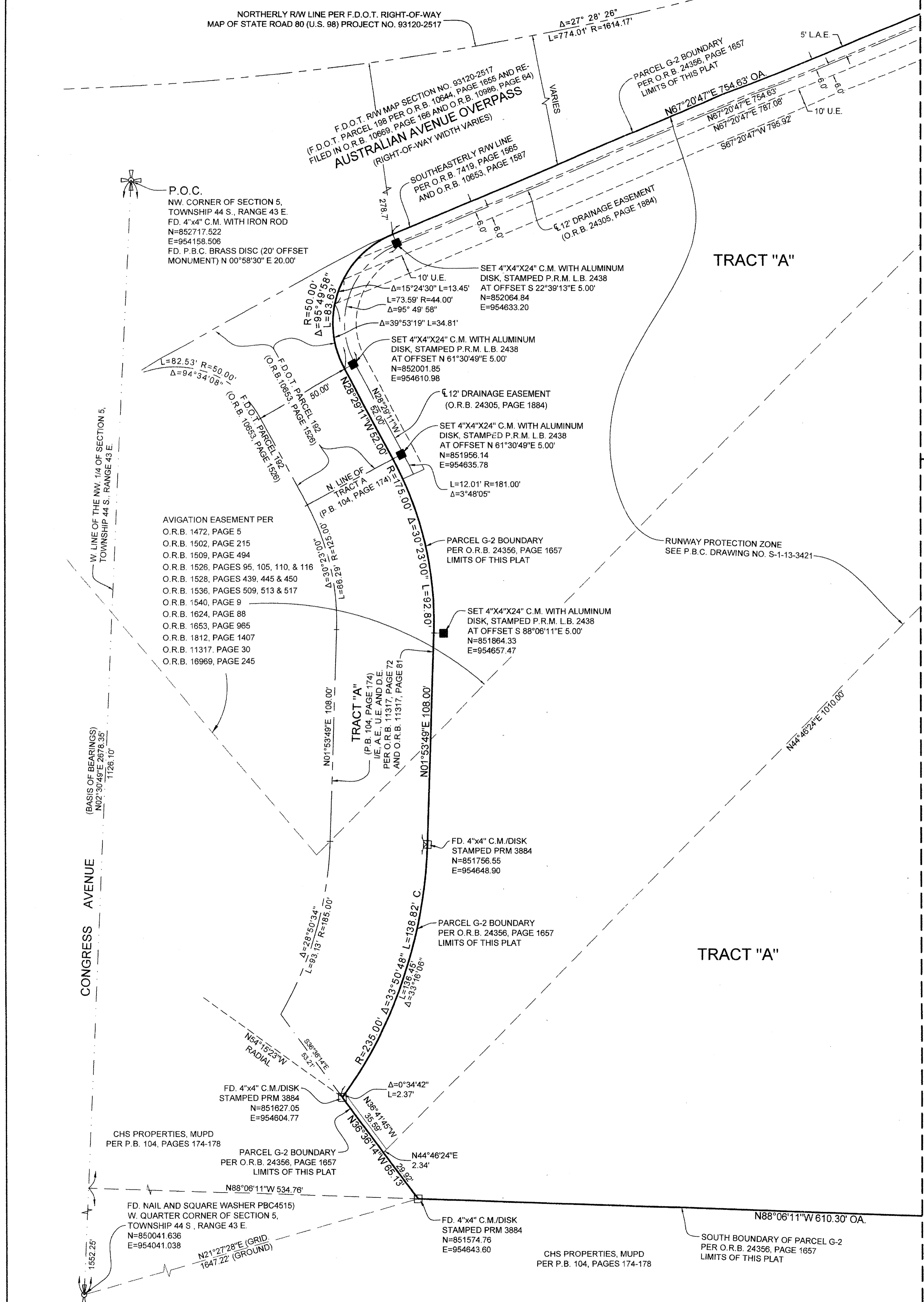


5867-000



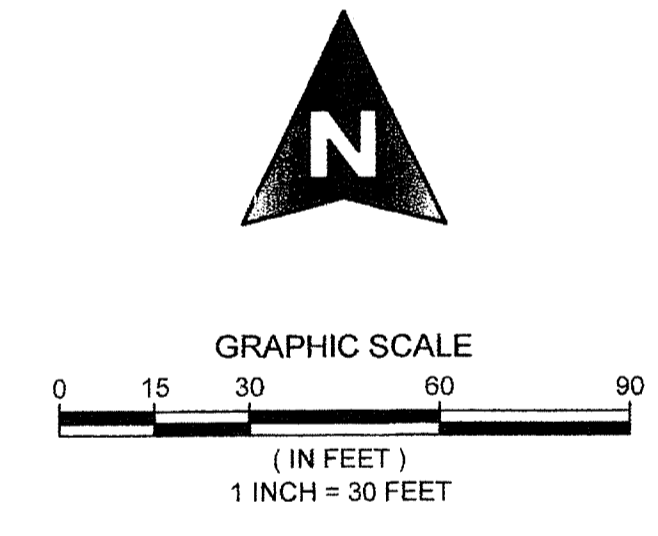
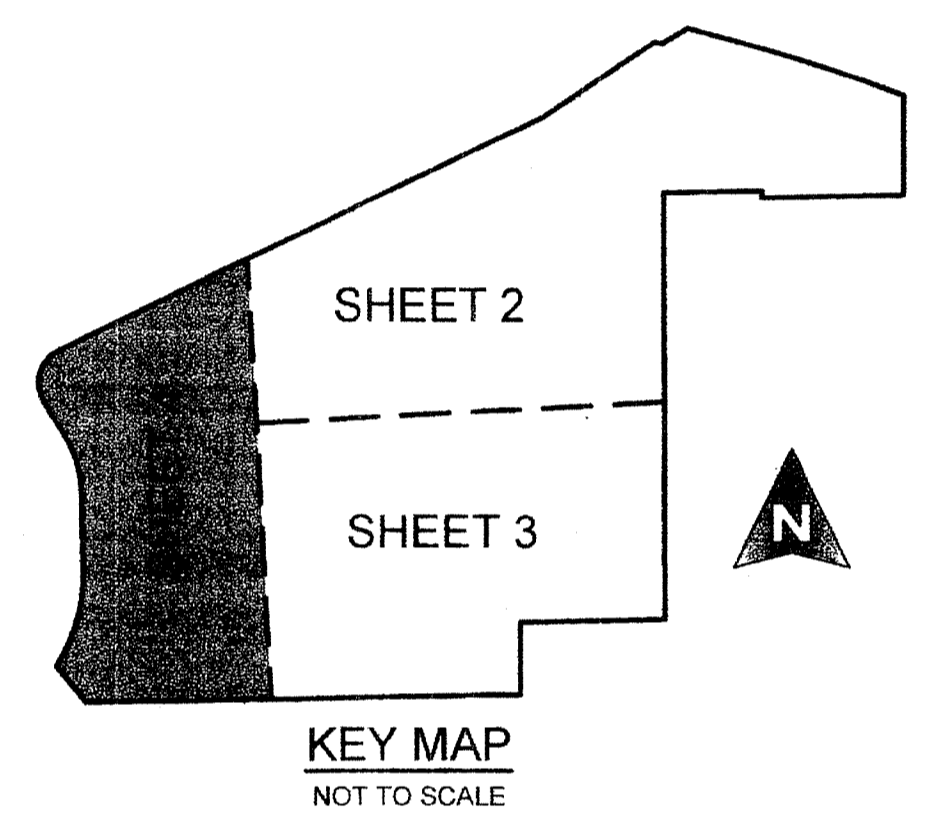
# PBIA PARCEL G

LYING IN SECTION 5, TOWNSHIP 44 SOUTH, RANGE 43 EAST, PALM BEACH COUNTY, FLORIDA, BEING ALL OF PARCEL G-2 OF THE AFFIDAVIT OF WAIVER (PLAT WAIVER) AS RECORDED IN OFFICIAL RECORD BOOK 24356, PAGE 1657, PUBLIC RECORDS OF PALM BEACH COUNTY, FLORIDA, AND BEING A RE-PLAT OF A PORTION OF LOT 18, MORRISON HOMES AS RECORDED IN PLAT BOOK 23, PAGES 189 AND 190, AS DESCRIBED IN OFFICIAL RECORD BOOK 26819, PAGE 868, PUBLIC RECORDS OF PALM BEACH COUNTY, FLORIDA AND A PORTION OF GOVERNMENT LOT 3, IN SAID SECTION 5, TOWNSHIP 44 SOUTH, RANGE 43 EAST AS DESCRIBED IN OFFICIAL RECORD BOOK 26819, PAGE 868, PUBLIC RECORDS OF PALM BEACH COUNTY, FLORIDA, AND A PORTION OF EAST GRACE DRIVE OF SAID MORRISON HOMES, ABANDONED PER OFFICIAL RECORD BOOK 27499, PAGE 453, PUBLIC RECORDS OF PALM BEACH COUNTY, FLORIDA.

SHEET 4 OF 4

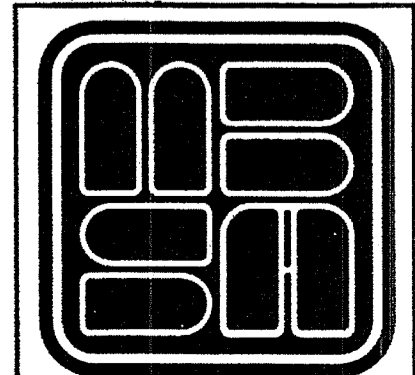
# 186

COUNTY OF PALM BEACH )  
 STATE OF FLORIDA ) SS  
 THIS PLAT WAS FILED FOR RECORD AT )  
 DAY OF )  
 2015, AND DULY )  
 RECORDED IN PLAT BOOK NO. )  
 ON PAGE ) THRU )  
 SHARON R. BOCK,  
 CLERK AND COMPTROLLER  
 BY: ) D.C.



**COORDINATES NOTE:**  
 STATE PLANE COORDINATES SHOWN ARE GRID  
 DATUM = NAD 83, 1990 ADJUSTMENT  
 ZONE = FLORIDA EAST  
 LINEAR UNITS = US SURVEY FOOT  
 COORDINATE SYSTEM 1983 STATE PLANE TRANSVERSE MERCATOR PROJECTION  
 ALL DISTANCES ARE GROUND  
 PROJECT SCALE FACTOR = 1.0000429  
 GROUND DISTANCE X SCALE FACTOR = GRID DISTANCE  
 BEARINGS AS SHOWN HEREON ARE GRID DATUM, NAD 83 1990 ADJUSTMENT,  
 FLORIDA EAST ZONE.

SHEET 4 OF 4



**MICHAEL B. SCHORAH & ASSOCIATES, INC.**  
 1850 FOREST HILL BLVD., SUITE 206  
 WEST PALM BEACH, FLORIDA 33409  
 TEL. (561) 968-0090 FAX. (561) 642-9726 LB# 2438

## PBIA PARCEL G

W:\3164 PDRKE AUTOMOTIVE\3164 PLAT.dwg 3/11/2015 10:52:39 AM