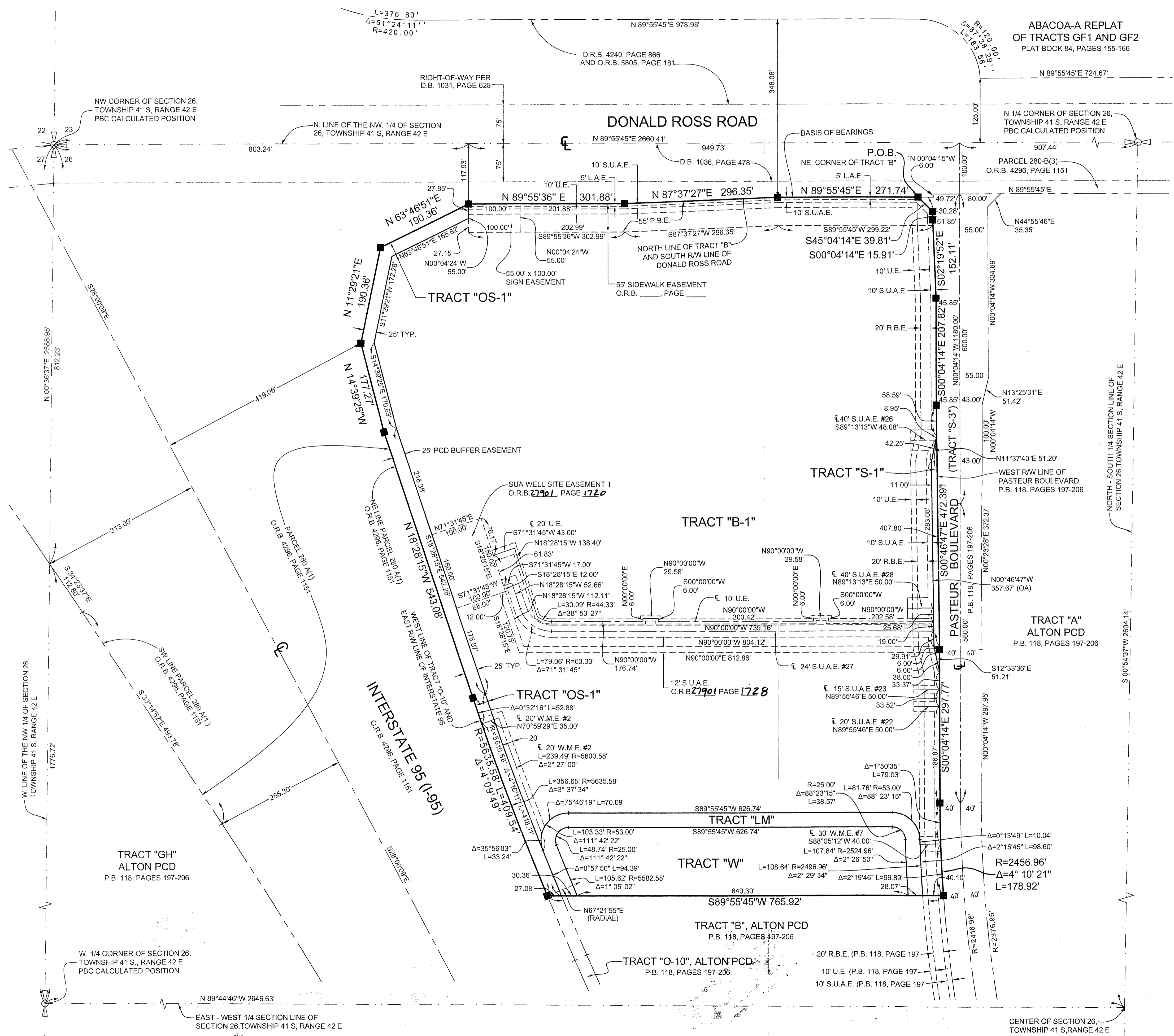


PASTEUR PLAT ONE

BEING A RE-PLAT OF A PORTION OF TRACT "B" AND A PORTION OF TRACT "O-10", ALTON PCD,
AS RECORDED IN PLAT BOOK 118, PAGES 197 THROUGH 206, INCLUSIVE, PUBLIC RECORDS OF PALM BEACH COUNTY, FLORIDA
LYING IN SECTION 26, TOWNSHIP 41 SOUTH, RANGE 42 EAST, CITY OF PALM BEACH GARDENS, PALM BEACH COUNTY, FLORIDA.
OCTOBER, 2015 SHEET 2 OF 2

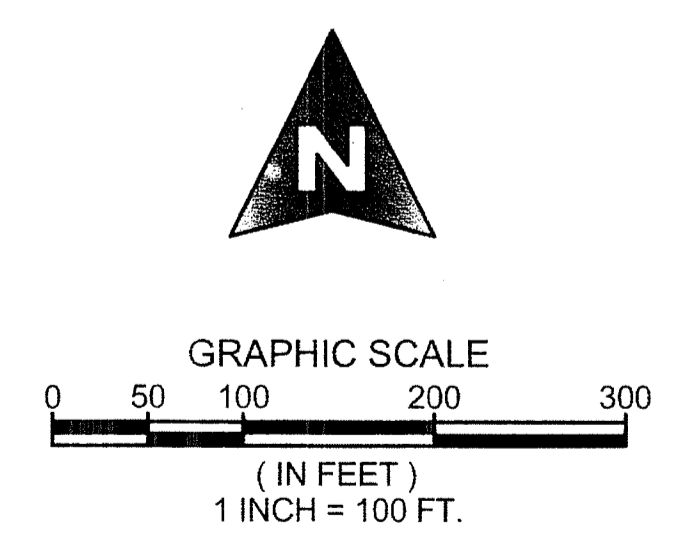
188

COUNTY OF PALM BEACH)
STATE OF FLORIDA) SS
THIS PLAT WAS FILED FOR RECORD AT)
M. THIS) DAY OF)
2015, AND DULY)
RECORDED IN PLAT BOOK NO.)
ON PAGE) THRU)
SHARON R. BOCK,
CLERK AND COMPTROLLER
BY:) D.C.



- LEGEND**
- P.O.B. = POINT OF BEGINNING
 - P.O.C. = POINT OF COMMENCEMENT
 - P.R.M. = PERMANENT REFERENCE MONUMENT
 - O.R.B. = OFFICIAL RECORD BOOK
 - D.B. = DEED BOOK
 - P.B. = PLAT BOOK
 - PBC = PALM BEACH COUNTY
 - TYP. = TYPICAL
 - FND. = FOUND
 - RW = RIGHT OF WAY
 - U.E. = UTILITY EASEMENT
 - R = RADIUS
 - L = ARC LENGTH
 - Δ = CURVE CENTRAL ANGLE
 - C.B. = CHORD BEARING
 - C.L. = CHORD LENGTH
 - P.B.E. = PARKWAY BUFFER EASEMENT
 - R.B.E. = ROADWAY BUFFER EASEMENT
 - S.U.A.E. = SEACOAST UTILITY AUTHORITY EASEMENT
 - I.R. = IRON ROD
 - L.A.E. = LIMITED ACCESS EASEMENT
 - FPL = FLORIDA POWER AND LIGHT COMPANY
 - W.M.E. = WATER MANAGEMENT EASEMENT
 - F.D.O.T. = FLORIDA DEPARTMENT OF TRANSPORTATION
 - SUA = SEACOAST UTILITY AUTHORITY
 - NPBCID = NORTHERN PALM BEACH COUNTY IMPROVEMENT DISTRICT
 - PCD = PLANNED COMMUNITY DEVELOPMENT
 - CL = CENTERLINE
 - = SET 4"x4"x24" CONCRETE MONUMENT WITH DISK, STAMPED "SCHORAH AND ASSOCIATES PRM LB#2438"

AREA TABULATION		FOR THE USE OF NORTHERN PALM BEACH COUNTY IMPROVEMENT DISTRICT		
TRACT DESIGNATION	ACREAGE	LAND USE CLASSIFICATION	CODE	DESIGNATED ACREAGE
TRACT "B-1"	26.416 ACRES	OFFICE	OFZ	26.416 ACRES
TRACT "OS-1"	0.855 ACRES	EXEMPT ACREAGE		
TRACT "S-1"	0.103 ACRES	EXEMPT ACREAGE		
TRACT "W"	2.002 ACRES	EXEMPT ACREAGE		
TRACT "LM"	0.624 ACRES	EXEMPT ACREAGE		
TOTAL	30.000 ACRES			



SHEET 2 OF 2

MICHAEL B. SCHORAH & ASSOCIATES, INC.
1850 FOREST HILL BLVD., SUITE 206
WEST PALM BEACH, FLORIDA 33406
EB# 2438 TEL. (561) 968-0080 FAX. (561) 642-9726 LB# 2438

PASTEUR PLAT ONE

W:\1660 Alton 10 Acres\1660 30AC-PLAT.DWG, 11/5/2015 11:59:48 AM LK