

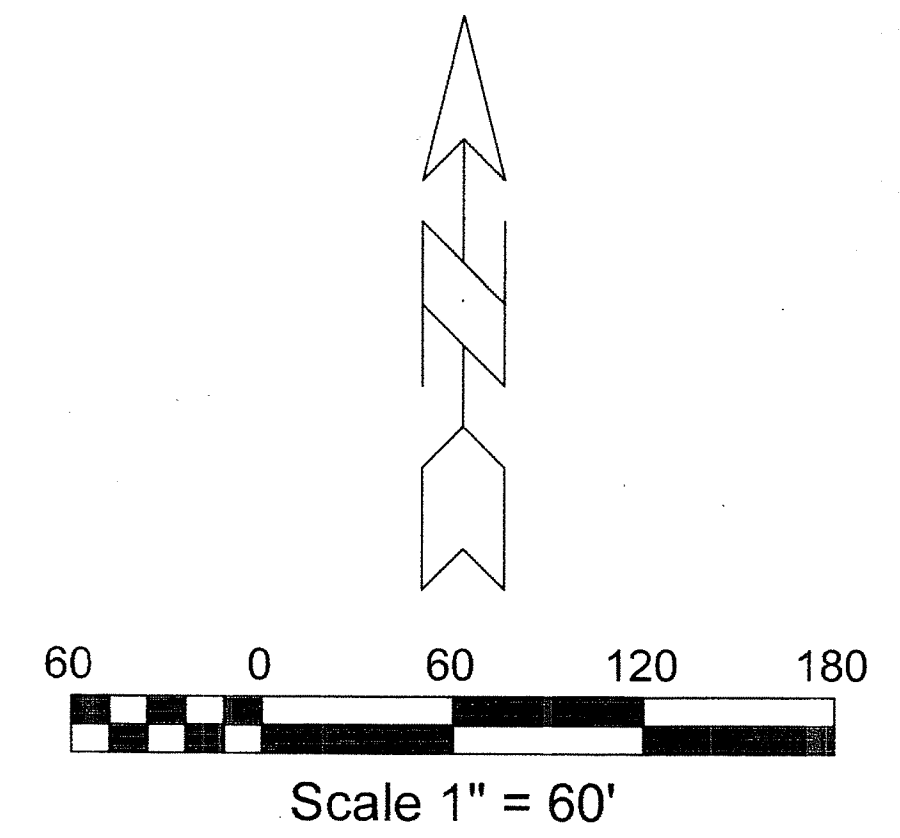
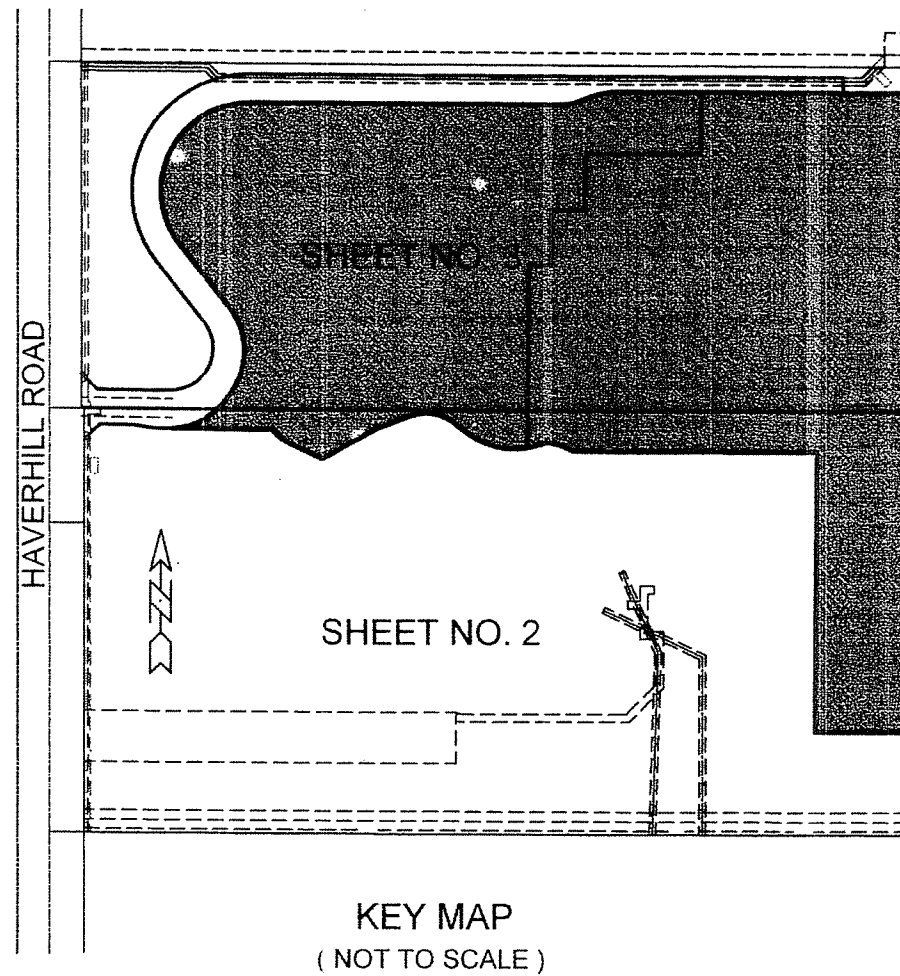
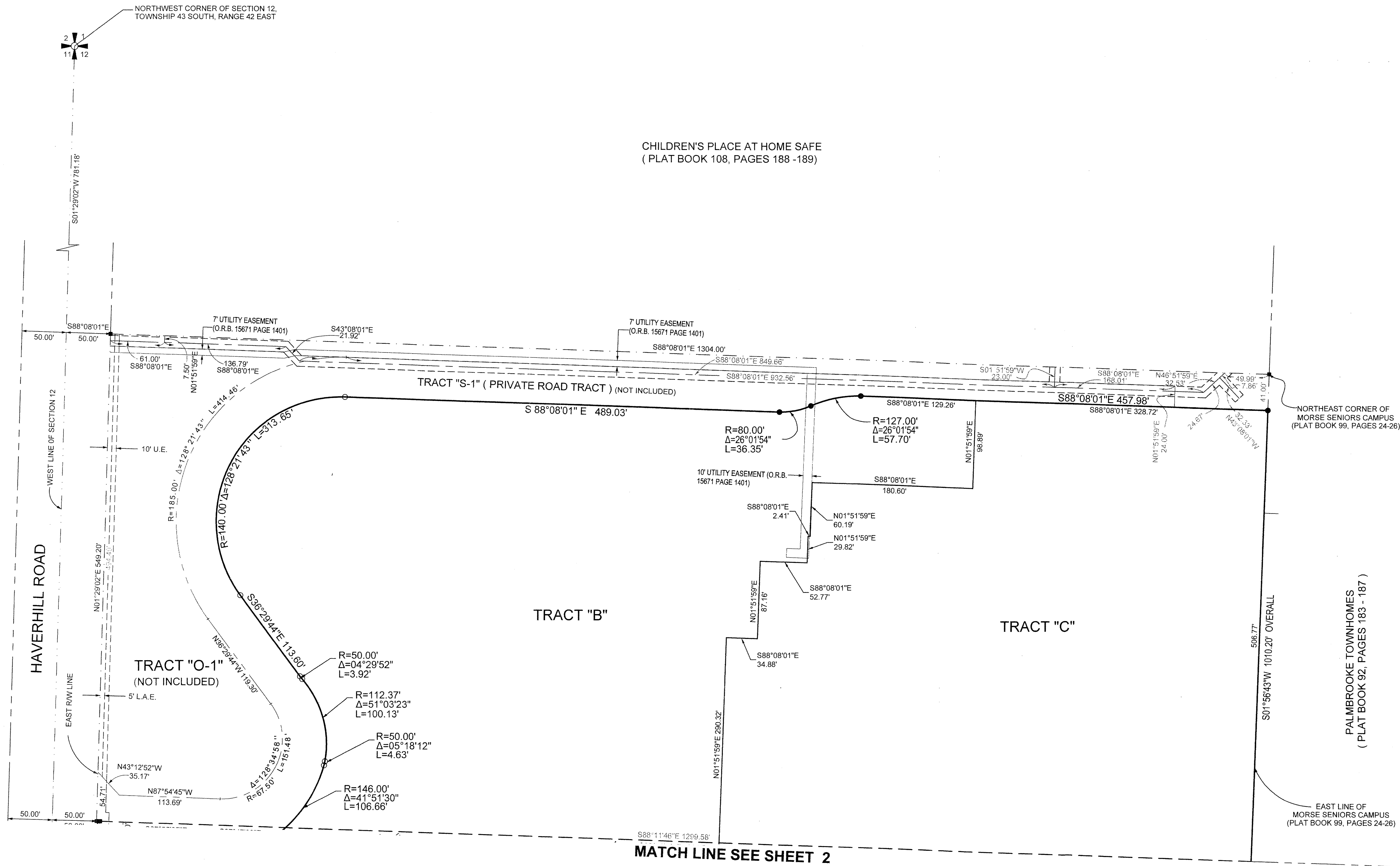
MORSE SENIORS CAMPUS TRACTS B AND C REPLAT

BEING A REPLAT OF TRACTS B AND C OF MORSE SENIORS CAMPUS, AS RECORDED IN PLAT BOOK 99, PAGES 24 THROUGH 26, PUBLIC RECORDS OF PALM BEACH COUNTY, FLORIDA, LYING IN SECTION 12, TOWNSHIP 43 SOUTH, RANGE 42 EAST, CITY OF WEST PALM BEACH, PALM BEACH COUNTY, FLORIDA.

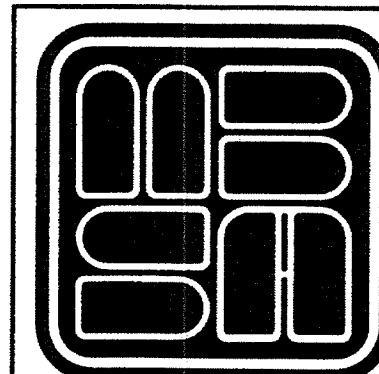
SHEET 3 OF 3

16

COUNTY OF PALM BEACH)
 STATE OF FLORIDA) SS
 THIS PLAT WAS FILED FOR RECORD AT)
 DAY OF)
 2015, AND DULY)
 RECORDED IN PLAT BOOK NO.)
 ON PAGE THRU)
 SHARON R. BOCK,
 CLERK AND COMPTROLLER
 BY: _____, D.C.



SHEET 3 OF 3



MICHAEL B. SCHORAH & ASSOCIATES, INC.
 1850 FOREST HILL BLVD., SUITE 206
 WEST PALM BEACH, FLORIDA 33406
 EB# 2438 TEL. (561) 968-0080 FAX. (561) 642-9726 LB# 2438
MORSE SENIORS CAMPUS TRACTS B AND C REPLAT