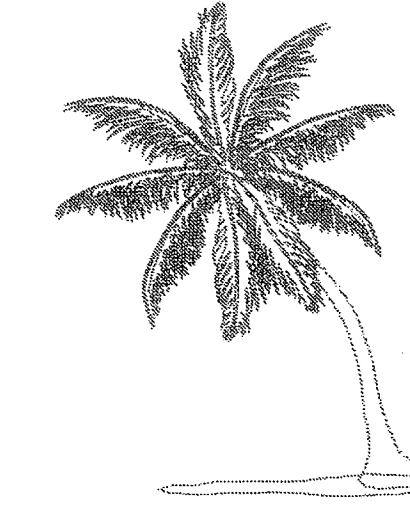


# PARKLAND REPLAT

BEING A REPLAT OF A PORTION OF LOTS 8 THROUGH 14, BLOCK 3, ACCORDING TO THE PLAT OF BETHESDA PARK, AS RECORDED IN PLAT BOOK 1, PAGE 136, IN THE PUBLIC RECORDS OF PALM BEACH COUNTY, FLORIDA.  
LOCATED IN SECTION 15, TOWNSHIP 43 SOUTH, RANGE 43 EAST

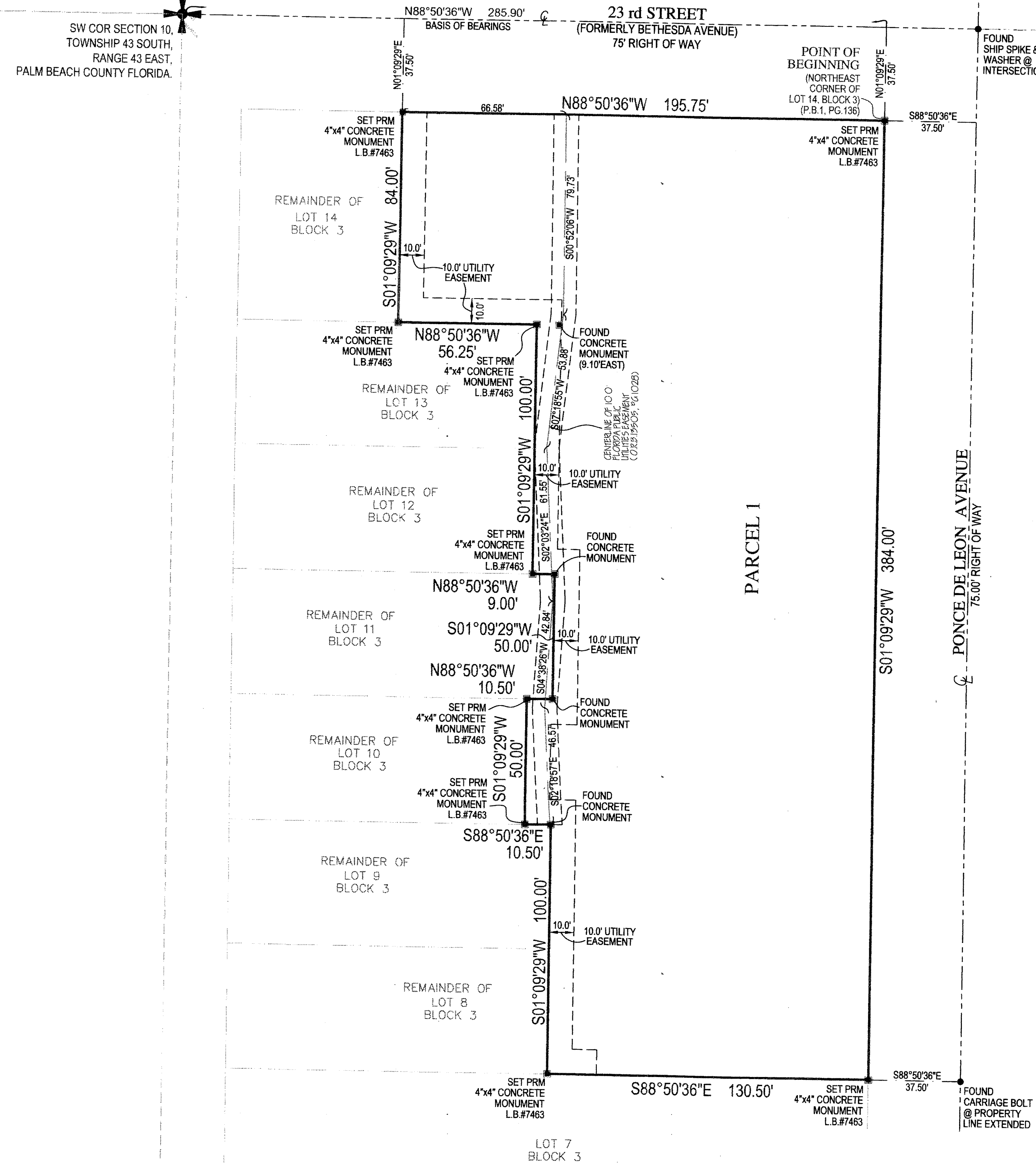
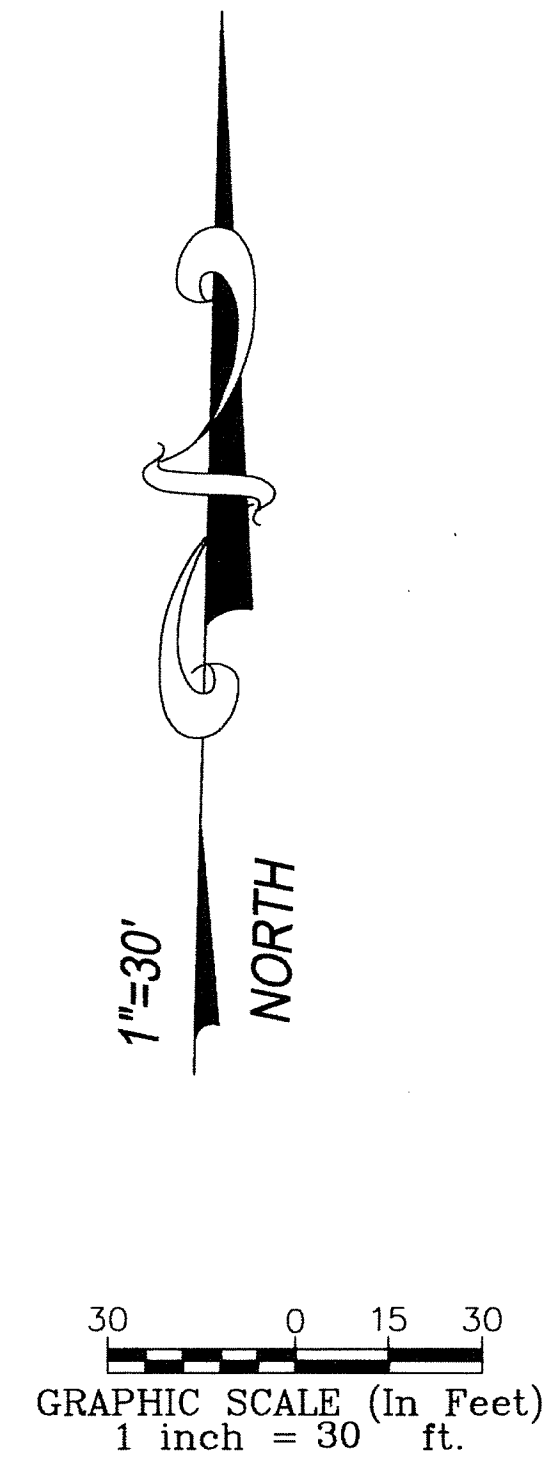
SHEET 2 OF 2 - APRIL 2015



# 49

COUNTY OF PALM BEACH  
STATE OF FLORIDA  
THIS PLAT WAS FILED FOR RECORD AT \_\_\_\_ M.  
THIS \_\_\_\_ DAY OF \_\_\_\_  
A.D. 2015 AND DULY RECORDED IN PLAT BOOK \_\_\_\_  
ON PAGES \_\_\_\_ THRU \_\_\_\_  
SHARON R. BOCK  
CLERK AND COMPTROLLER  
BY: \_\_\_\_\_ D.C.

SHEET 2 OF 2



### LEGEND

- I.D. IDENTIFICATION
- L LENGTH
- L.B. LICENSED BUSINESS
- N.A.V.D. NORTH AMERICAN VERTICAL DATUM
- N.G.V.D. NATIONAL GEODETIC VERTICAL DATUM
- O.R.B. OFFICIAL RECORDS BOOK
- P PLAT
- P.S.M. PROFESSIONAL SURVEYOR AND MAPPER
- P.R.M. PERMANENT REFERENCE MONUMENT
- P.G. PAGE
- P.B. PLAT BOOK
- R RADIUS
- A AND
- N NUMBER
- AT
- C@ CENTERLINE

6250 N. MILITARY TRAIL,  
SUITE 102  
WEST PALM BEACH, FL 33407  
PHONE (561) 640-4800  
FACSIMILE (561) 640-0576  
WWW.COMPASSSURVEYING.NET  
LB #7463