

SURVEYING & MAPPING  
Prepared by: Jeff S. Hodapp, P.S.M.  
Certificate of Authorization No. LB7264  
947 Clint Moore Road  
Boca Raton, Florida 33487  
Tel: (561) 241-9988  
Fax: (561) 241-5182

# CORTINA PUD REPLAT TWO

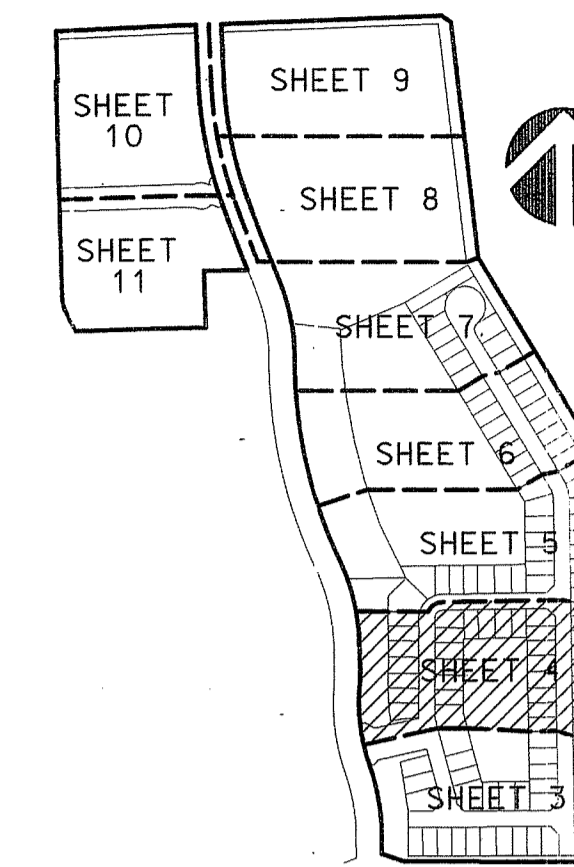
A REPLAT OF ALL OF "CORTINA PUD REPLAT" (P.B. 109, PGS. 196-202, P.B.C.R.) AND PORTIONS OF "BOYNTON TOWN CENTER, A P.C.D." (P.B. 106, PGS. 144-151, P.B.C.R.)  
SECTION 20, TOWNSHIP 45 SOUTH, RANGE 43 EAST  
CITY OF BOYNTON BEACH, PALM BEACH COUNTY, FLORIDA.  
FEBRUARY, 2016

**LEGEND:**

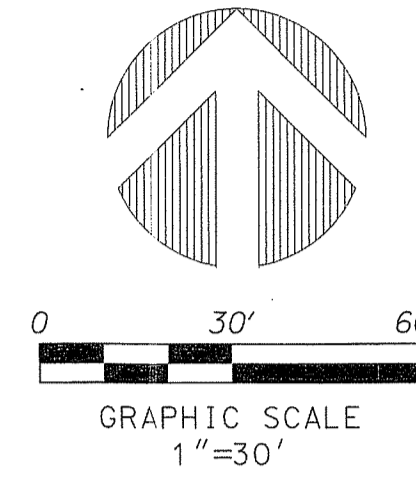
**ABBREVIATIONS:**

- AC. ACRES
- CDD COMMUNITY DEVELOPMENT DISTRICT
- CH CHORD
- CHB CHORD BEARING
- CONC. CONCRETE
- COR. CORNER
- D DELTA (CENTRAL ANGLE)
- D.E. DRAINAGE EASEMENT
- L LENGTH
- L.A.E. LIMITED ACCESS EASEMENT
- L.B. LICENSED BUSINESS
- L.B.E. LANDSCAPE BUFFER EASEMENT
- L.M.E. LAKE MAINTENANCE EASEMENT
- L.S. LICENSED SURVEYOR
- L.S.E. LIFT STATION EASEMENT
- L.W.D.D. LAKE WORTH DRAINAGE DISTRICT
- MON. MONUMENT
- O.R.B. OFFICIAL RECORDS BOOK
- N.R. NON-RADIAL
- P.B. PLAT BOOK
- P.B.C.R. PALM BEACH COUNTY RECORDS
- PG. PAGE
- P.C.P. PERMANENT CONTROL POINT
- P.O.B. POINT OF BEGINNING
- P.O.C. POINT OF COMMENCEMENT
- P.R.M. PERMANENT REFERENCE MONUMENT
- P.S.M. PROFESSIONAL SURVEYOR & MAPPER
- P.U.D. PLANNED UNIT DEVELOPMENT
- R. RADIUS
- R/W RIGHT-OF-WAY
- R.U.E. ROAD AND UTILITY EASEMENT
- SEC. SECTION
- S.F. SQUARE FEET
- U.E. UTILITY EASEMENT

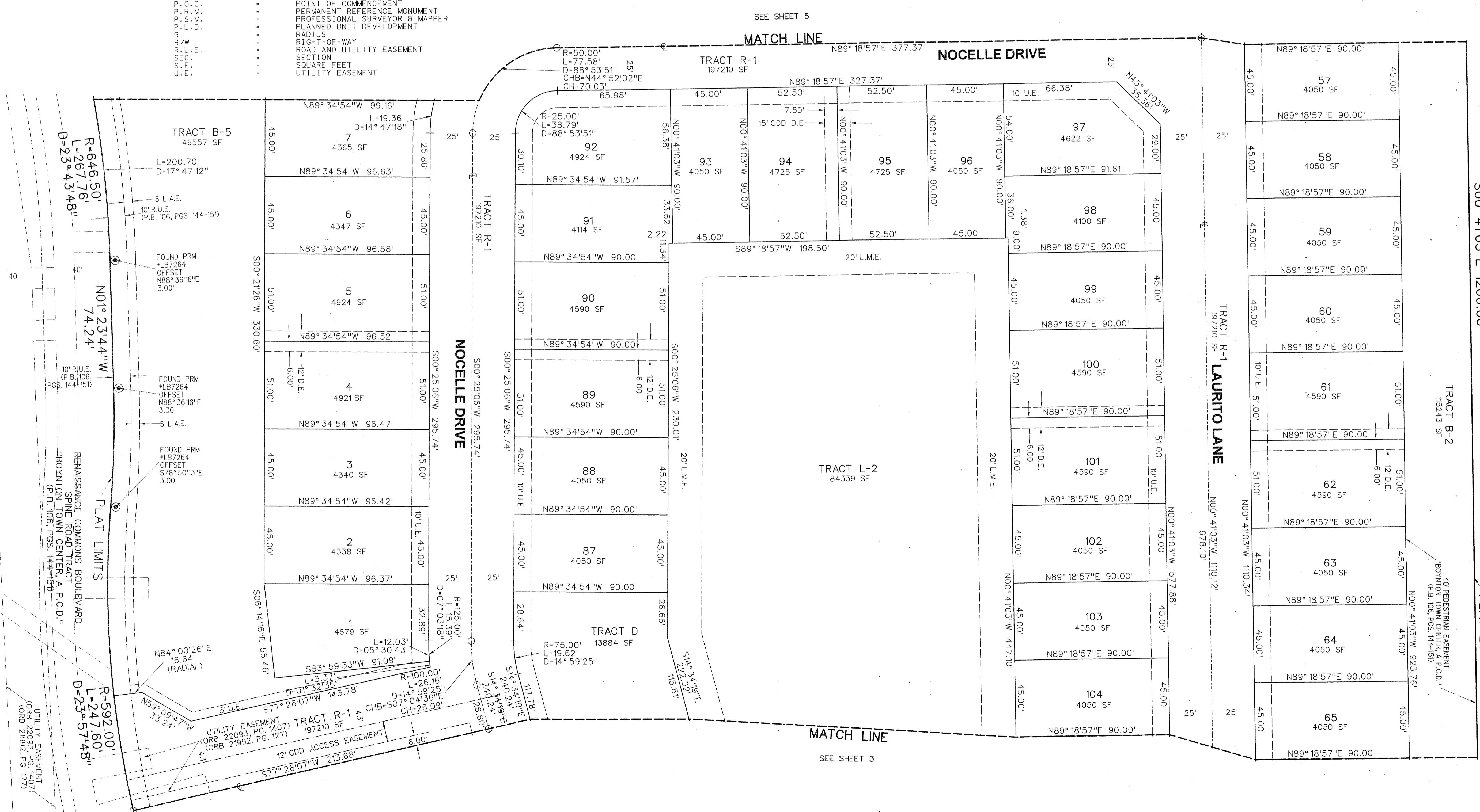
SET P.R.M. (UNLESS OTHERWISE NOTED)-4" x 4" CONC. MON. WITH ALUMINUM DISK STAMPED \*LB7264 P.C.P. CENTERLINE



KEY MAP  
NOT TO SCALE



83  
SHEET 4 OF 11



S00° 41'03" W 1200.00'

LAKE WORTH DRAINAGE DISTRICT  
CANAL E-4  
(180' CANAL R/W)  
(PER P.B. 46, PAGES 81-83, P.B.C.R.)  
(O.R.B. 1654, PG. 370, P.B.C.R.)  
(O.R.B. 3772, PG. 800, P.B.C.R.)  
PLAT LIMITS

40' PEDESTRIAN EASEMENT  
(P.B. 106, PGS. 144-151)

SEE SHEET 5

SEE SHEET 3