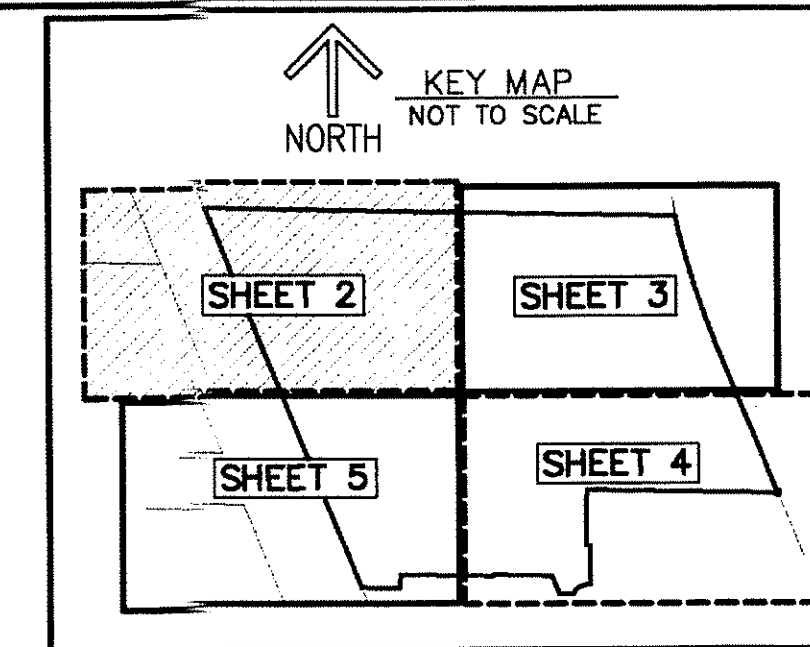


THIS INSTRUMENT PREPARED BY
 DAVID P. LINDLEY
 OF
CAULFIELD and WHEELER, INC.
 SURVEYORS - ENGINEERS - PLANNERS
 7900 GLADES ROAD, SUITE 100
 BOCA RATON, FLORIDA 33434
 OFFICE (561)392-1991 FAX (561)750-1452
 CERTIFICATE OF AUTHORIZATION NO. LB 3591

WATER CLUB NORTH PALM BEACH

BEING TRACT "A", DOMANI PLAT,
 AS RECORDED IN PLAT BOOK 107, PAGES 64 AND 65 OF THE PUBLIC RECORDS OF PALM BEACH COUNTY, FLORIDA,
 LYING IN SECTION 4, TOWNSHIP 42 SOUTH, RANGE 43 EAST,
 TOGETHER WITH A PORTION OF SECTION 9, TOWNSHIP 42 SOUTH, RANGE 43 EAST,
 VILLAGE OF NORTH PALM BEACH, PALM BEACH COUNTY, FLORIDA



130

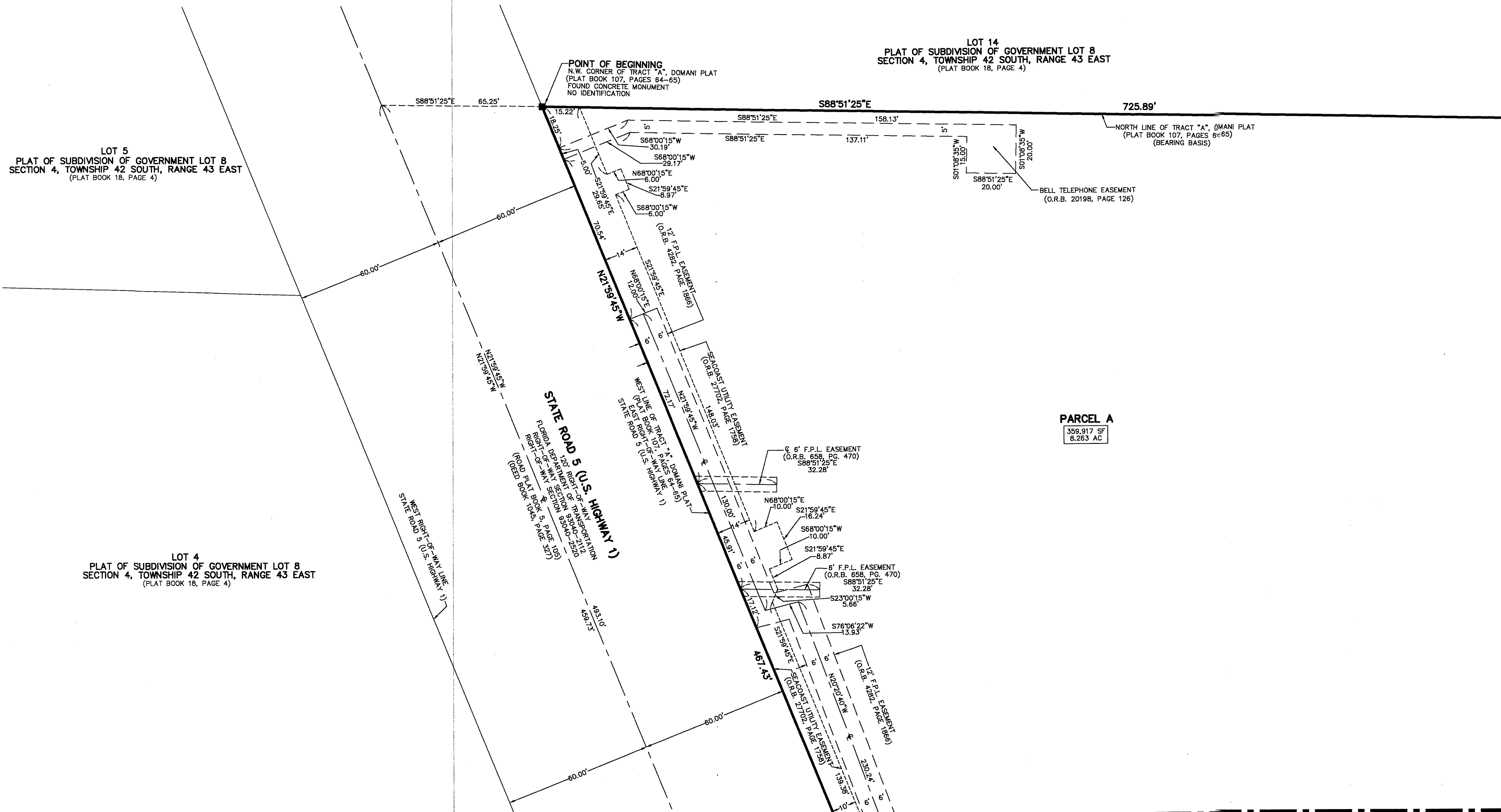
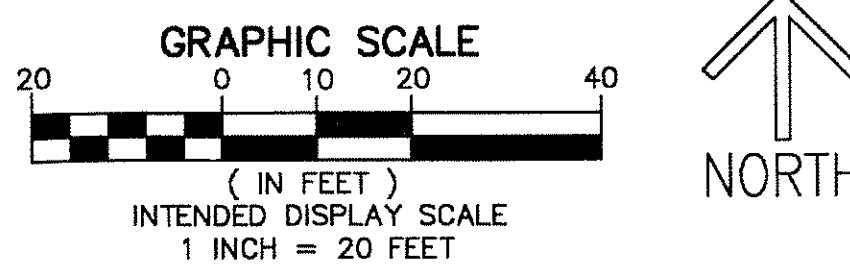
STATE OF FLORIDA
 COUNTY OF PALM BEACH
 THIS PLAT WAS FILED FOR
 RECORD AT _____ M.
 THIS _____ DAY OF _____
 A.D. 201____ AND DULY RECORDED
 IN PLAT BOOK _____ ON
 PAGES _____ THRU _____

SHARON R. BOCK
 CLERK AND COMPTROLLER

BY: _____
 DEPUTY CLERK

SHEET 2 OF 5

- LEGEND/ABBREVIATIONS**
- SET PRM - INDICATES PERMANENT REFERENCE MONUMENT
 - 4"x4"x24" CONCRETE MONUMENT WITH ALUMINUM DISK
 - STAMPED "C&W PRM LB#3591" UNLESS OTHERWISE NOTED
 - - INDICATES NAIL AND DISK
 - ⊙ - CENTERLINE
 - Δ - CENTRAL ANGLE
 - R - RADIUS
 - L - ARC LENGTH
 - AC - ACRES
 - F.P.L. - FLORIDA POWER & LIGHT CO.
 - LB - LICENSED BUSINESS
 - NO. - NUMBER
 - O.R.B. - OFFICIAL RECORD BOOK
 - SF - SQUARE FEET



MATCH LINE SHEET 5 OF 5

MATCH LINE SHEET 3 OF 5