

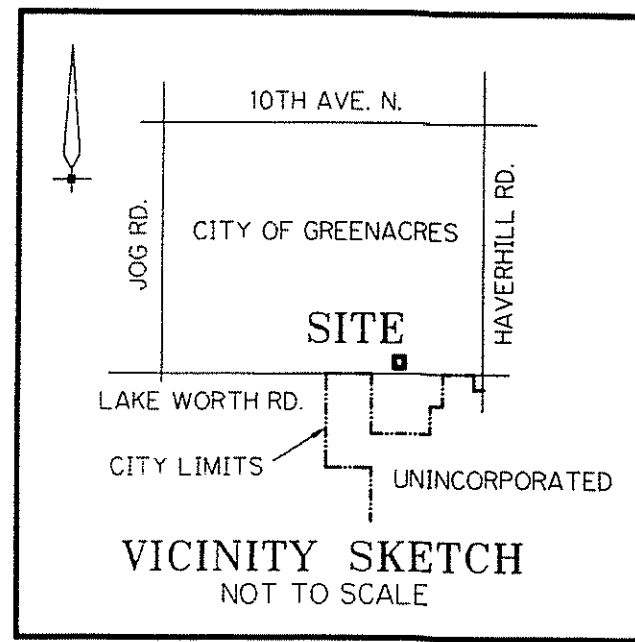
# GREENACRES NISSAN

A PORTION OF THE SOUTHEAST QUARTER OF SECTION 23, TOWNSHIP 44 SOUTH, RANGE 42 EAST,  
CITY OF GREENACRES, PALM BEACH COUNTY, FLORIDA.

SHEET 2 OF 2

MAY, 2016

# 138



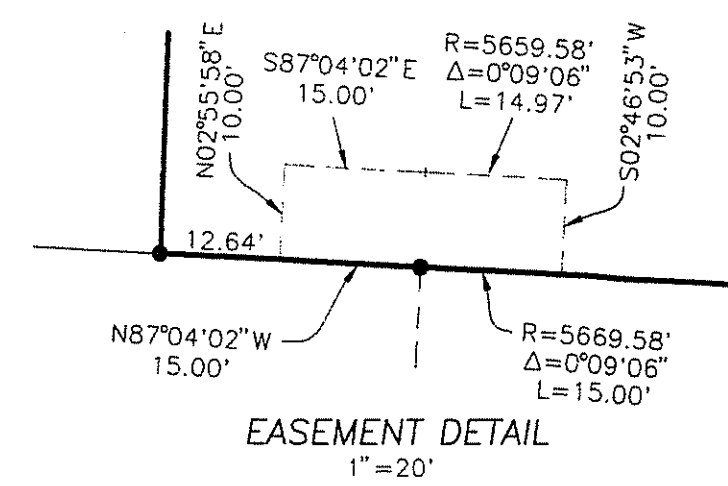
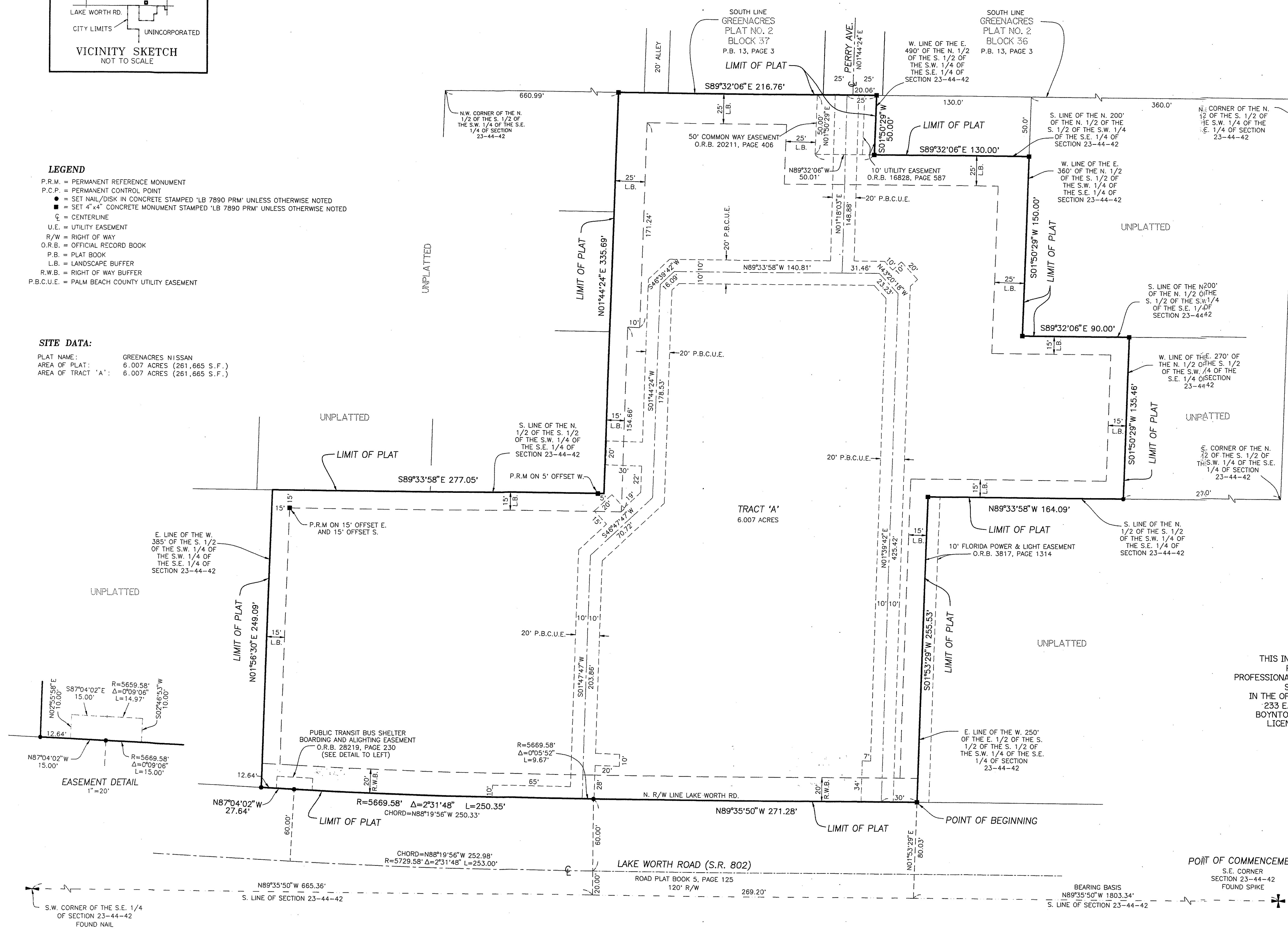
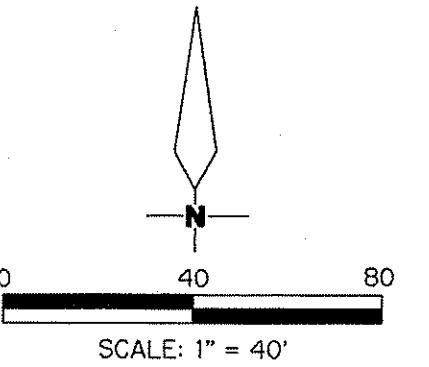
STATE OF FLORIDA  
COUNTY OF PALM BEACH  
THIS PLAT WAS FILED FOR RECORD  
AT \_\_\_\_\_ M., THIS DAY  
OF \_\_\_\_\_ 2016, AND DULY  
RECORDED IN PLAT BOOK NO. \_\_\_\_\_  
ON PAGE \_\_\_\_\_  
SHARON R. BOCK  
CLERK AND COMPTROLLER  
BY: \_\_\_\_\_ D.C.

### LEGEND

- P.R.M. = PERMANENT REFERENCE MONUMENT
- P.C.P. = PERMANENT CONTROL POINT
- = SET NAIL/DISK IN CONCRETE STAMPED 'LB 7890 PRM' UNLESS OTHERWISE NOTED
- = SET 4"x4" CONCRETE MONUMENT STAMPED 'LB 7890 PRM' UNLESS OTHERWISE NOTED
- = CENTERLINE
- U.E. = UTILITY EASEMENT
- R/W = RIGHT OF WAY
- O.R.E. = OFFICIAL RECORD BOOK
- P.B. = PLAT BOOK
- L.B. = LANDSCAPE BUFFER
- R.W.B. = RIGHT OF WAY BUFFER
- P.B.C.U.E. = PALM BEACH COUNTY UTILITY EASEMENT

### SITE DATA:

PLAT NAME: GREENACRES NISSAN  
AREA OF PLAT: 6.007 ACRES (261,665 S.F.)  
AREA OF TRACT 'A': 6.007 ACRES (261,665 S.F.)



THIS INSTRUMENT PREPARED BY  
ROBERT A. BUGGEE  
PROFESSIONAL SURVEYOR & MAPPER, #3302  
STATE OF FLORIDA  
IN THE OFFICES OF "THE SURVEYOR"  
233 E. GATEWAY BOULEVARD  
BOYNTON BEACH, FLORIDA 33435  
LICENSED BUSINESS # 7890

POINT OF COMMENCEMENT  
S.E. CORNER  
SECTION 23-44-42  
FOUND SPIKE

S.W. CORNER OF THE S.E. 1/4  
OF SECTION 23-44-42  
FOUND NAIL