

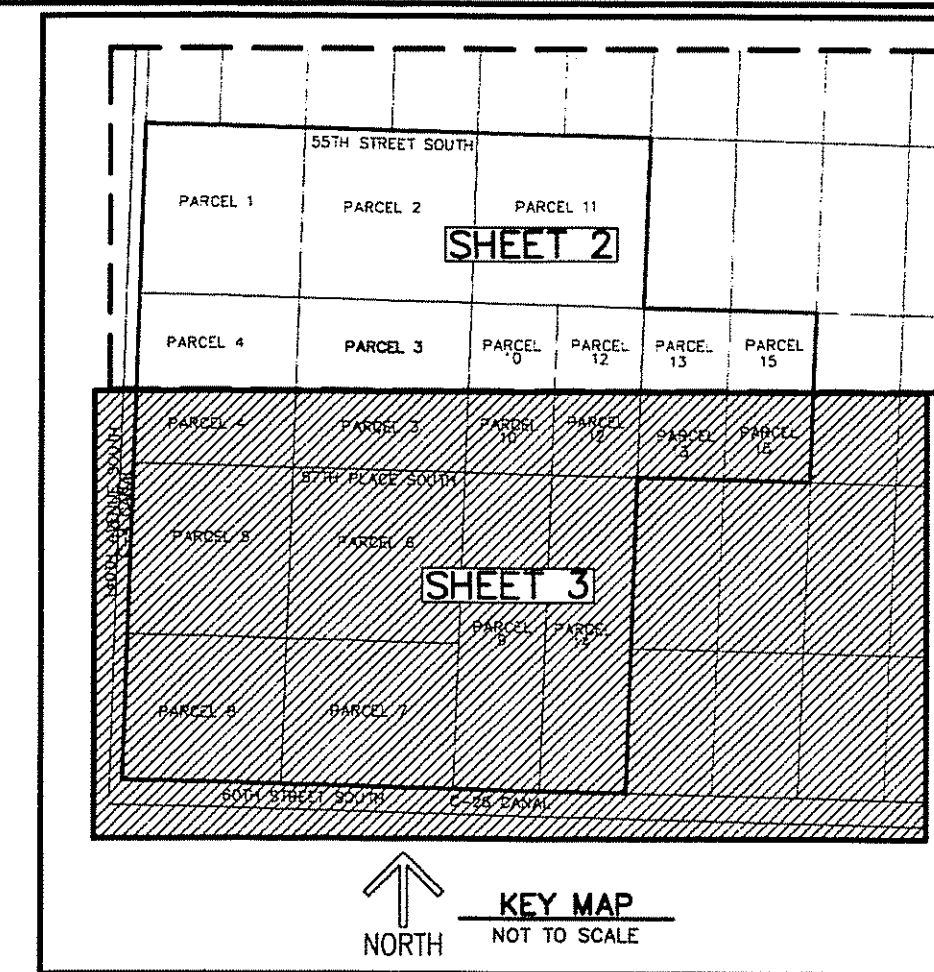
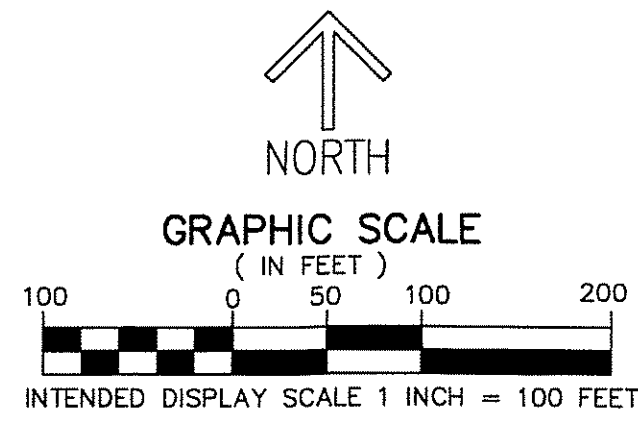
THIS INSTRUMENT PREPARED BY
 DAVID P. LINDLEY
 OF
CAULFIELD and WHEELER, INC.
 SURVEYORS - ENGINEERS - PLANNERS
 7900 GLADES ROAD, SUITE 100
 BOCA RATON, FLORIDA 33434 - (561)392-1991
 CERTIFICATE OF AUTHORIZATION NO. LB 3591

EVERGLADES POLO

A PORTION OF THE SOUTHWEST 1/4 OF SECTION 33, TOWNSHIP 44 SOUTH, RANGE 41 EAST,
 VILLAGE OF WELLINGTON, PALM BEACH COUNTY, FLORIDA

LEGEND/ABBREVIATIONS

- AC - ACRES
- FPL - FLORIDA POWER & LIGHT CO.
- LB - LICENSED BUSINESS
- O.R.B. - OFFICIAL RECORD BOOK
- SF - SQUARE FEET
- Δ - DENOTES CENTRAL ANGLE
- R - DENOTES RADIUS
- L - DENOTES ARC LENGTH
- PRM - DENOTES PERMANENT REFERENCE MONUMENT
- 4" x 4" x 24" CONCRETE MONUMENT WITH ALUMINUM DISK STAMPED "C&W PRM LB3591"
- - DENOTES PERMANENT REFERENCE MONUMENT NAIL AND METAL DISK STAMPED "PRM LB3591"

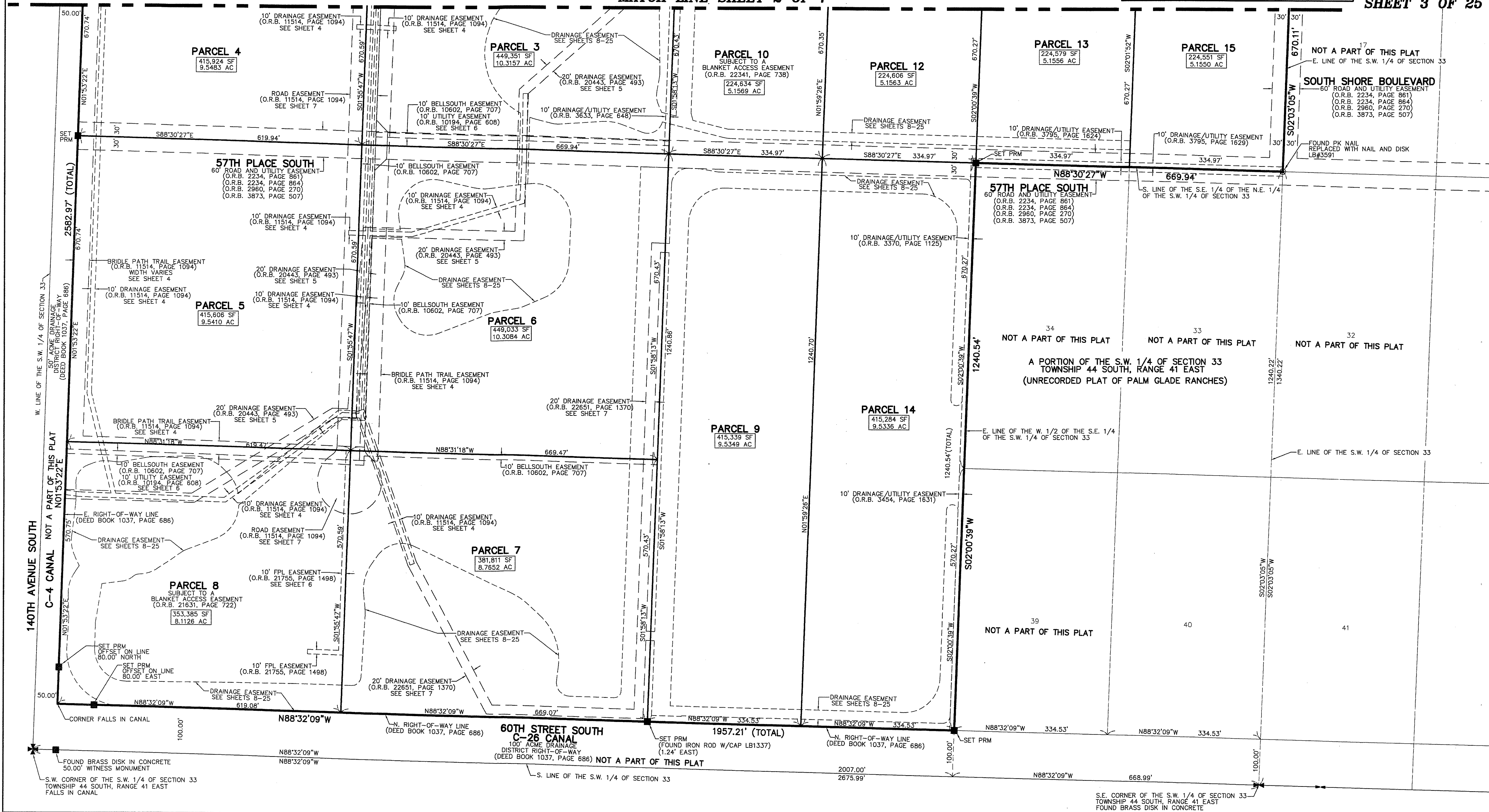


160

STATE OF FLORIDA
 COUNTY OF PALM BEACH
 THIS PLAT WAS FILED FOR
 RECORD AT _____ M.
 THIS _____ DAY OF _____
 A.D. 201____ AND DULY RECORDED
 IN PLAT BOOK _____ ON
 PAGES _____ AND _____
 SHARON R. BOCK
 CLERK AND COMPTROLLER
 BY: _____
 DEPUTY CLERK

MATCH LINE SHEET 2 OF 7

SHEET 3 OF 25



140TH AVENUE SOUTH

60TH STREET SOUTH
 C-26 CANAL

S.E. CORNER OF THE S.W. 1/4 OF SECTION 33
 TOWNSHIP 44 SOUTH, RANGE 41 EAST
 FOUND BRASS DISK IN CONCRETE