

THIS INSTRUMENT PREPARED BY  
 DAVID P. LINDLEY  
 OF  
**CAULFIELD and WHEELER, INC.**  
 SURVEYORS — ENGINEERS — PLANNERS  
 7900 GLADES ROAD, SUITE 100  
 BOCA RATON, FLORIDA 33434 — (561)392-1991  
 CERTIFICATE OF AUTHORIZATION NO. LB3591

# BALLPARK OF THE PALM BEACHES

BEING A REPLAT OF A PORTION OF THE PUBLIC WATER SUPPLY AREA WEST PALM BEACH WATER COMPANY,  
 ACCORDING TO THE PLAT THEREOF, AS RECORDED IN PLAT BOOK 23, PAGES 149 AND 150  
 OF THE PUBLIC RECORDS OF PALM BEACH COUNTY, FLORIDA,  
 LYING IN SECTION 1, TOWNSHIP 43 SOUTH, RANGE 42 EAST, CITY OF WEST PALM BEACH, PALM BEACH COUNTY, FLORIDA

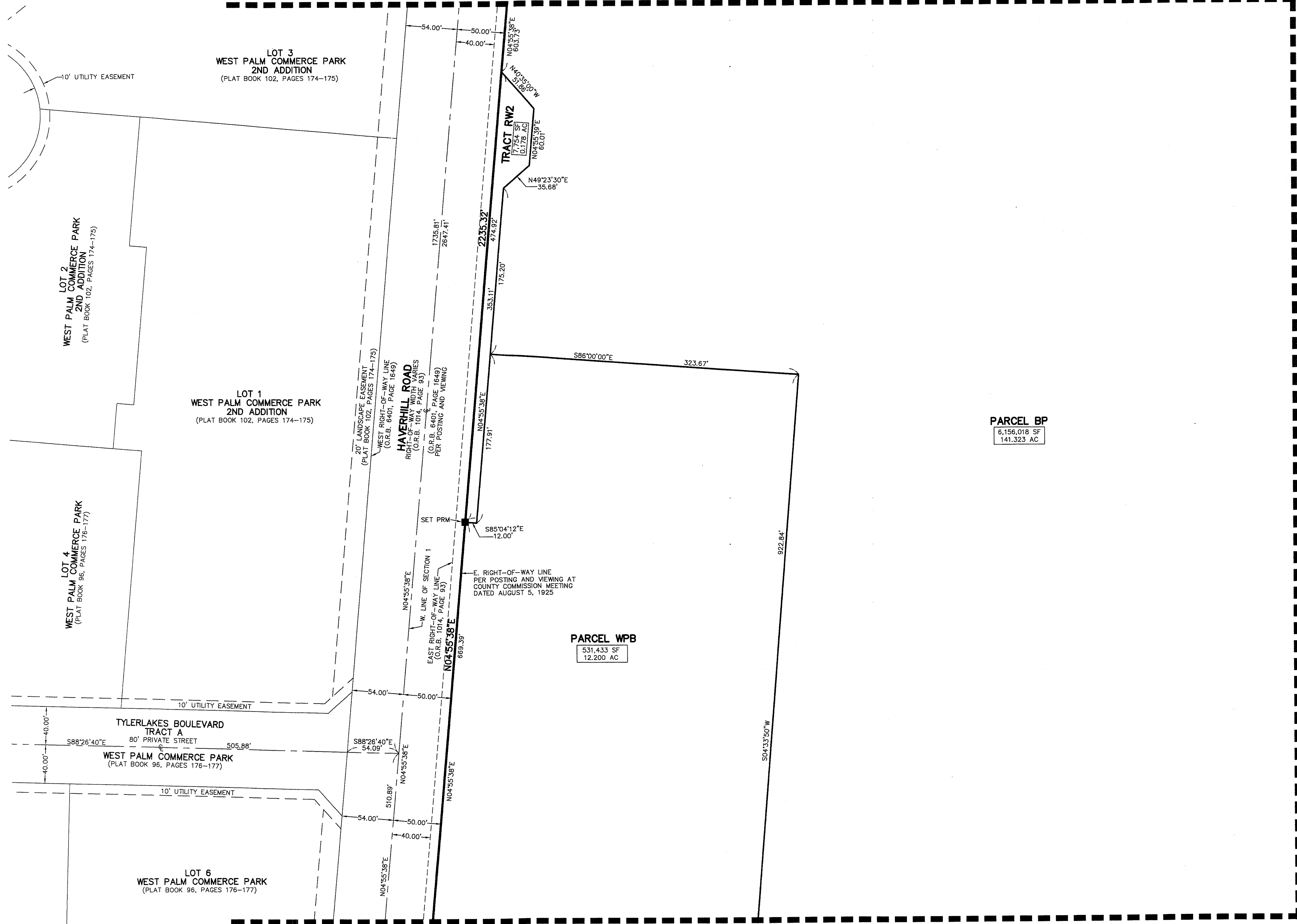
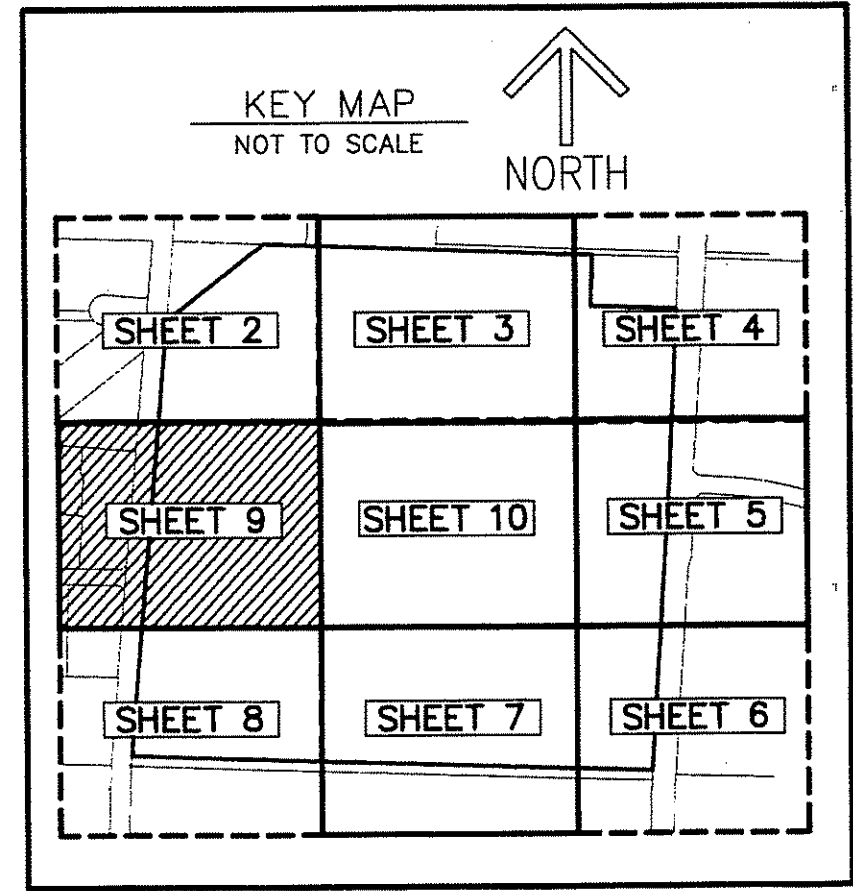
191

STATE OF FLORIDA  
 COUNTY OF PALM BEACH  
 THIS PLAT WAS FILED FOR  
 RECORD AT \_\_\_\_\_ M.  
 THIS \_\_\_\_\_ DAY OF \_\_\_\_\_  
 A.D. 2016 AND DULY RECORDED  
 IN PLAT BOOK \_\_\_\_\_ ON  
 PAGES \_\_\_\_\_ AND \_\_\_\_\_  
 SHARON R. BOCK  
 CLERK AND COMPTROLLER

BY: \_\_\_\_\_  
 DEPUTY CLERK

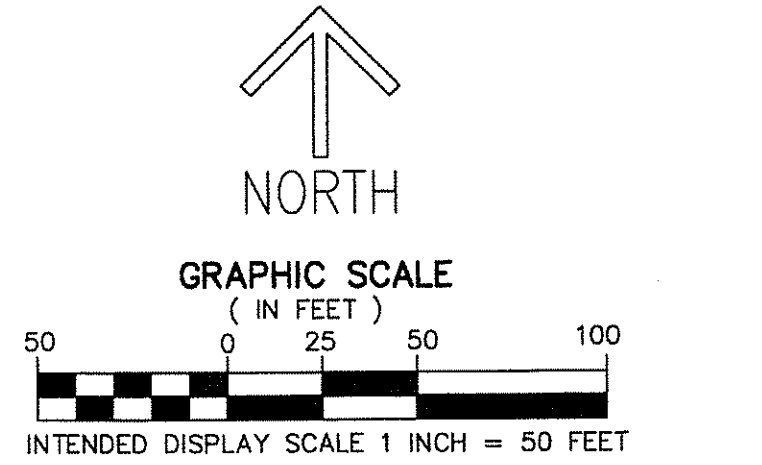
MATCH LINE SHEET 2 OF 10

SHEET 9 OF 10



MATCH LINE SHEET 10 OF 10

MATCH LINE SHEET 8 OF 10



LEGEND ABBREVIATIONS

- AC — ACRES
- FPL — FLORIDA POWER & LIGHT CO.
- C — CENTERLINE
- LB — LICENSED BUSINESS
- O.R.B. — OFFICIAL RECORD BOOK
- SF — SQUARE FEET
- UE — UTILITY EASEMENT
- PRM — INDICATES SET 4" X 4" X 24" CONCRETE PERMANENT REFERENCE MONUMENT WITH ALUMINUM DISK STAMPED LB3591 UNLESS OTHERWISE NOTED.
- PRM — INDICATES NAIL AND DISK, LB3591