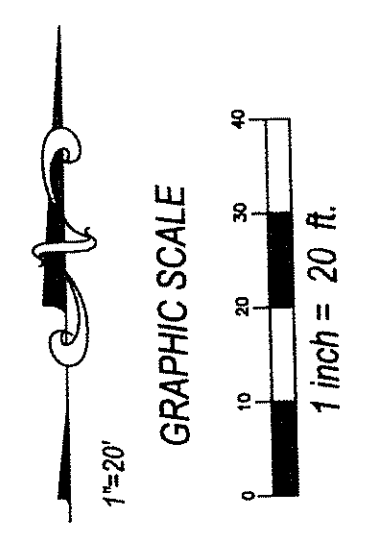


EVANS PLACE

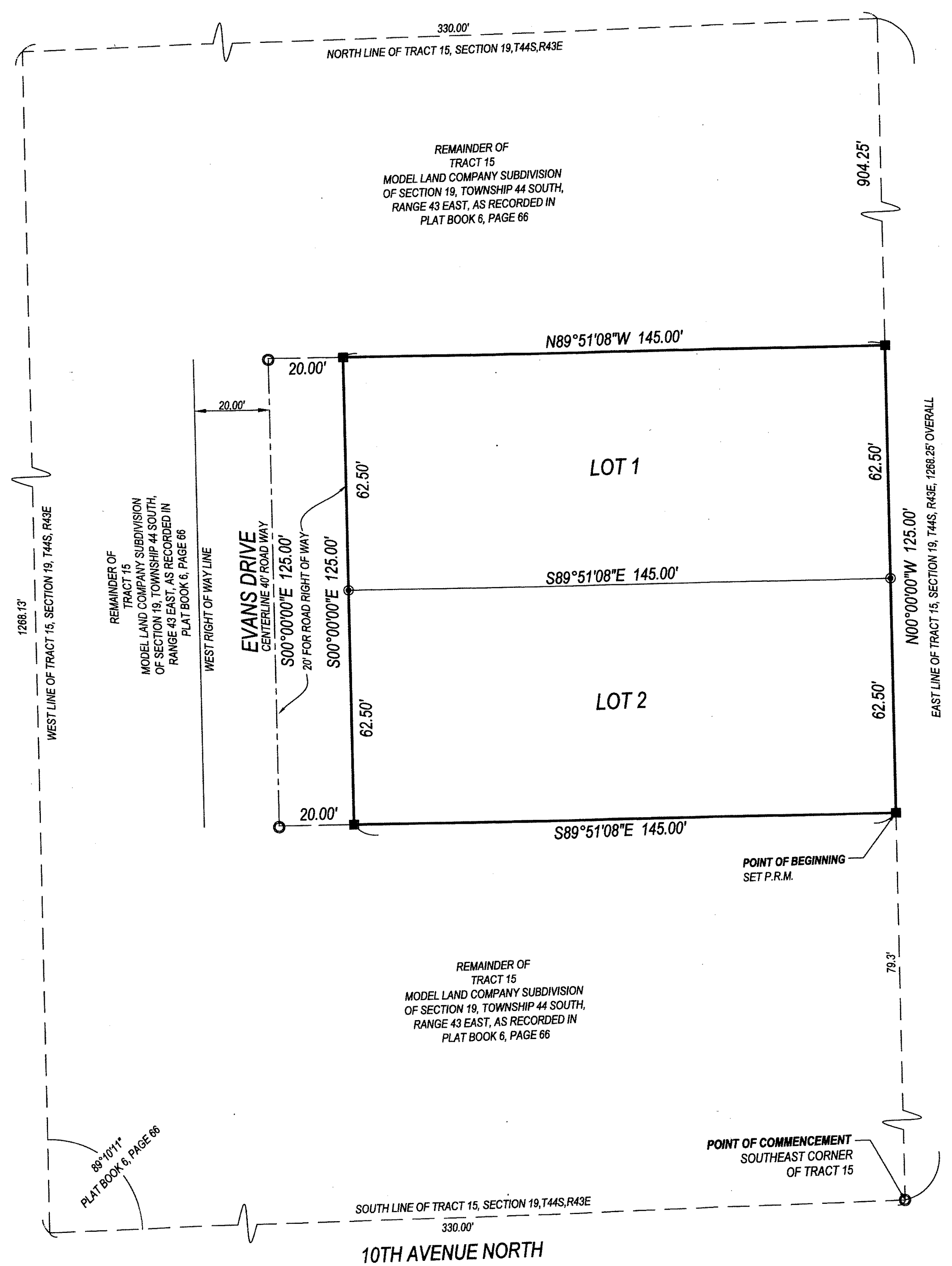
BEING A REPLAT OF A PORTION OF TRACT 15, MODEL LAND COMPANY SUBDIVISION OF SECTION 19, TOWNSHIP 44 SOUTH, RANGE 43 EAST, AS RECORDED IN PLAT BOOK 6, PAGE 66 PUBLIC RECORDS OF PALM BEACH COUNTY, FLORIDA.

LYING IN THE VILLAGE OF PALM SPRINGS, PALM BEACH COUNTY, FLORIDA (ZONING PROJECT NUMBER: 6001.01.04) SHEET 2 OF 2

STATE OF FLORIDA
COUNTY OF PALM BEACH
THIS PLAT HAS BEEN FILED FOR
RECORD AT _____
THIS _____ DAY OF _____, 201____
AND DULY RECORDED IN PLAT
BOOK _____
ON PAGE _____
SHARON R. BOCK,
CLERK & COMPTROLLER
PALM BEACH COUNTY
BY: _____



TRACT 16
MODEL LAND COMPANY SUBDIVISION
OF SECTION 19, TOWNSHIP 44 SOUTH,
RANGE 43 EAST, AS RECORDED IN
PLAT BOOK 6, PAGE 66



REMAINDER OF
TRACT 15
MODEL LAND COMPANY SUBDIVISION
OF SECTION 19, TOWNSHIP 44 SOUTH,
RANGE 43 EAST, AS RECORDED IN
PLAT BOOK 6, PAGE 66

REMAINDER OF
TRACT 15
MODEL LAND COMPANY SUBDIVISION
OF SECTION 19, TOWNSHIP 44 SOUTH,
RANGE 43 EAST, AS RECORDED IN
PLAT BOOK 6, PAGE 66

TRACT 14
MODEL LAND COMPANY SUBDIVISION
OF SECTION 19, TOWNSHIP 44 SOUTH,
RANGE 43 EAST, AS RECORDED IN
PLAT BOOK 6, PAGE 66

REMAINDER OF
TRACT 15
MODEL LAND COMPANY SUBDIVISION
OF SECTION 19, TOWNSHIP 44 SOUTH,
RANGE 43 EAST, AS RECORDED IN
PLAT BOOK 6, PAGE 66

* ABBREVIATIONS:
PSM = FLORIDA LICENSED SURVEYOR & MAPPER
LB = LICENSED BUSINESS
PB = PLAT BOOK
ORB = OFFICIAL RECORD BOOK
PG = PAGE
SQ. FT. = SQUARE FEET
PRM = PERMANENT REFERENCE MONUMENT
LS = LICENSED SURVEYOR

- LEGEND
- SET 4"x 4" CONCRETE MONUMENT AND BRASS DISK "LB 6788"
 - SET 1/2" IRON ROD AND CAP "LB 6788"
 - FOUND 4"x 4" CONCRETE MONUMENT (PERMANENT REFERENCE MONUMENT)
 - FOUND NAIL AND DISK

PM SURVEYING
4546 CAMBRIDGE STREET
WEST PALM BEACH, FL. 33415
(561) 478-7764 FAX 478-1094
VISIT US AT PMSURVEYING.NET
JOB # 15080890