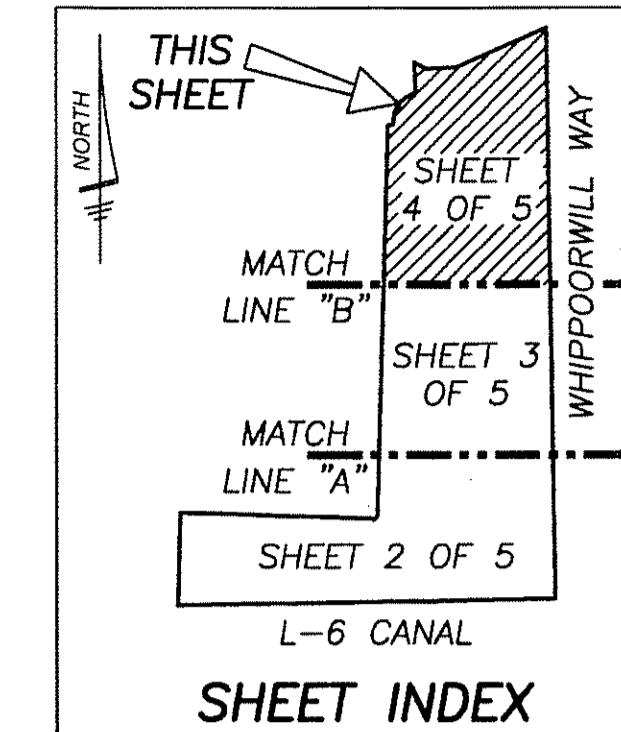
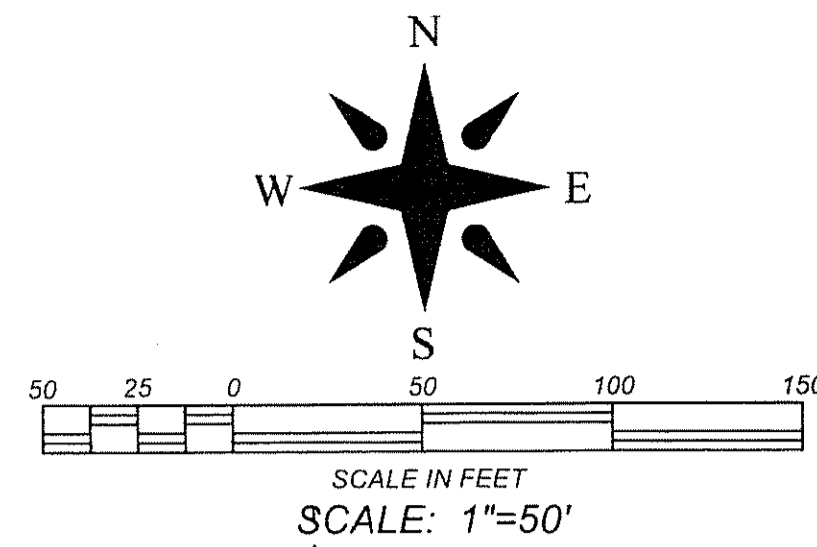


ISLA VERDE OF WELLINGTON RESIDENTIAL REPLAT NO. 1

BEING A REPLAT OF ISLA VERDE OF WELLINGTON RESIDENTIAL REPLAT, ACCORDING TO THE PLAT THEREOF, AS RECORDED IN PLAT BOOK 115, PAGES 69 THROUGH 73, PUBLIC RECORDS OF PALM BEACH COUNTY, FLORIDA, LYING IN SECTIONS 6 AND 7, TOWNSHIP 44 SOUTH, RANGE 42 EAST, VILLAGE OF WELLINGTON, PALM BEACH COUNTY, FLORIDA

AUGUST 2015



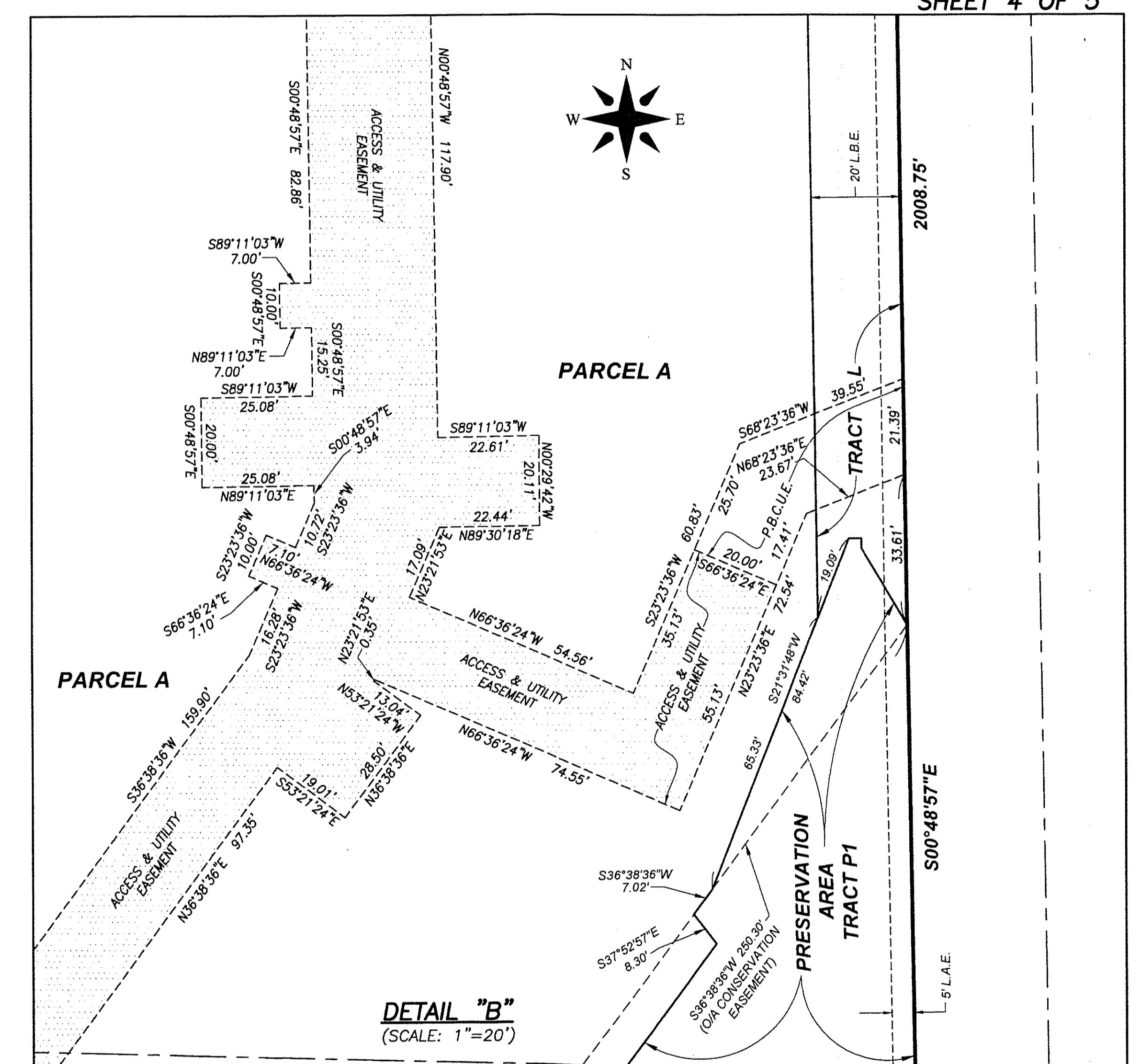
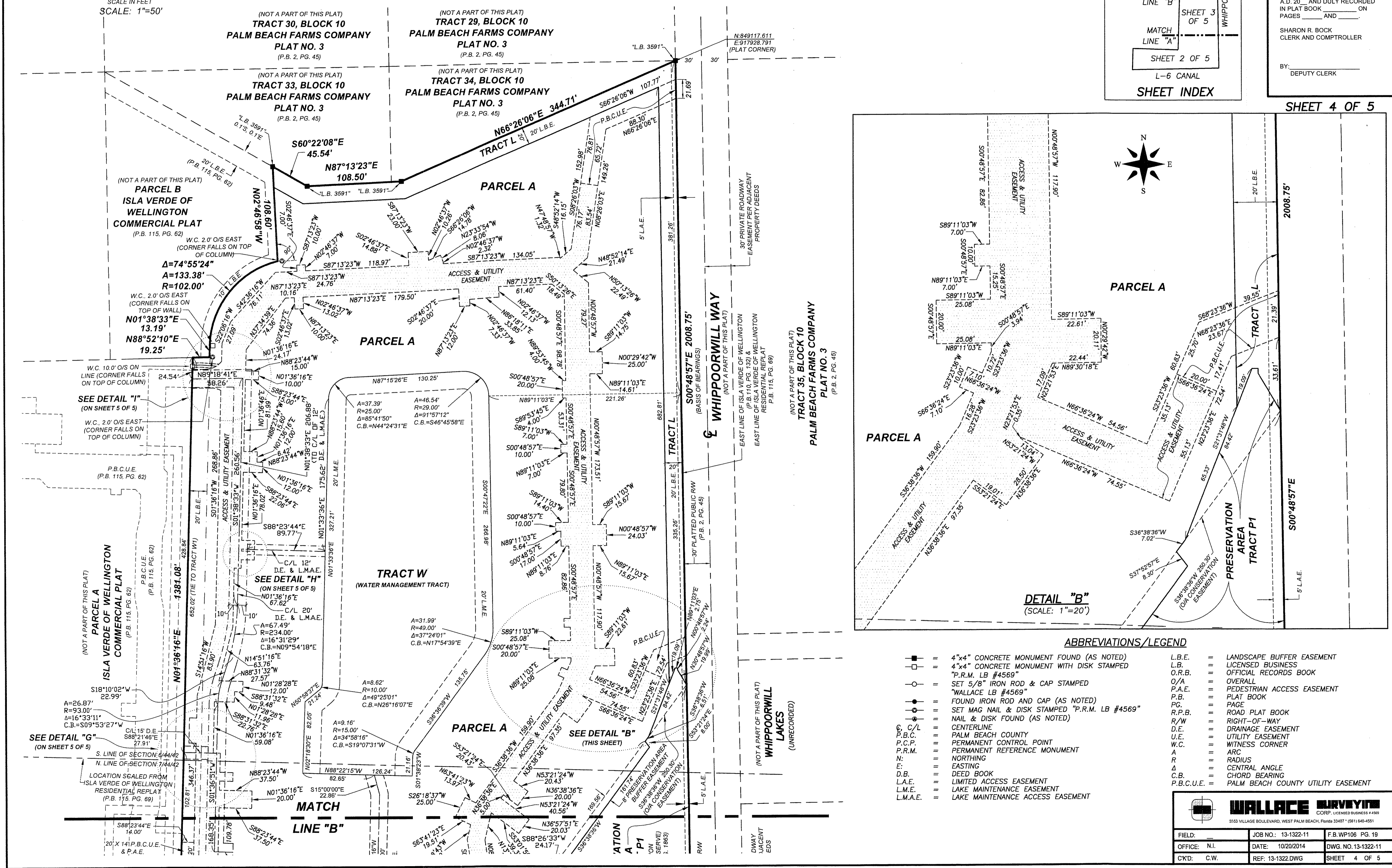
13

STATE OF FLORIDA
COUNTY OF PALM BEACH
THIS PLAT WAS FILED FOR
RECORD AT _____ M.
THIS _____ DAY OF _____
A.D. 20____ AND DULY RECORDED
IN PLAT BOOK _____ ON
PAGES _____ AND _____

SHARON R. BOCK
CLERK AND COMPTROLLER

BY: _____
DEPUTY CLERK

SHEET 4 OF 5



ABBREVIATIONS/LEGEND

■	4"x4" CONCRETE MONUMENT FOUND (AS NOTED)	L.B.E.	LANDSCAPE BUFFER EASEMENT
□	4"x4" CONCRETE MONUMENT WITH DISK STAMPED	L.B.	LICENSED BUSINESS
○	"P.R.M. LB #4569"	O.R.B.	OFFICIAL RECORDS BOOK
○	SET 5/8" IRON ROD & CAP STAMPED	O/A	OVERALL
○	"WALLACE LB #4569"	P.A.E.	PEDESTRIAN ACCESS EASEMENT
○	FOUND IRON ROD AND CAP (AS NOTED)	P.B.	PLAT BOOK
○	SET MAG NAIL & DISK STAMPED "P.R.M. LB #4569"	PG.	PAGE
○	NAIL & DISK FOUND (AS NOTED)	R.P.B.	ROAD PLAT BOOK
○	CENTERLINE	R/W	RIGHT-OF-WAY
○	PALM BEACH COUNTY	D.E.	DRAINAGE EASEMENT
○	PERMANENT CONTROL POINT	U.E.	UTILITY EASEMENT
○	PERMANENT REFERENCE MONUMENT	W.C.	WITNESS CORNER
N	NORTHING	A	ARC
E	EASTING	R	RADIUS
D.B.	DEED BOOK	Δ	CENTRAL ANGLE
L.A.E.	LIMITED ACCESS EASEMENT	C.B.	CHORD BEARING
L.M.E.	LAKE MAINTENANCE EASEMENT	P.B.C.U.E.	PALM BEACH COUNTY UTILITY EASEMENT
L.M.A.E.	LAKE MAINTENANCE ACCESS EASEMENT		

WALLACE SURVIVING
CORP. LICENSED BUSINESS #4569
5553 VILLAGE BOULEVARD, WEST PALM BEACH, FLORIDA 33407 (561) 640-4551

FIELD: _____	JOB NO.: 13-1322-11	F.B.WP106 PG. 19
OFFICE: N.I.	DATE: 10/20/2014	DWG. NO. 13-1322-11
CKD: C.W.	REF: 13-1322.DWG	SHEET 4 OF 5