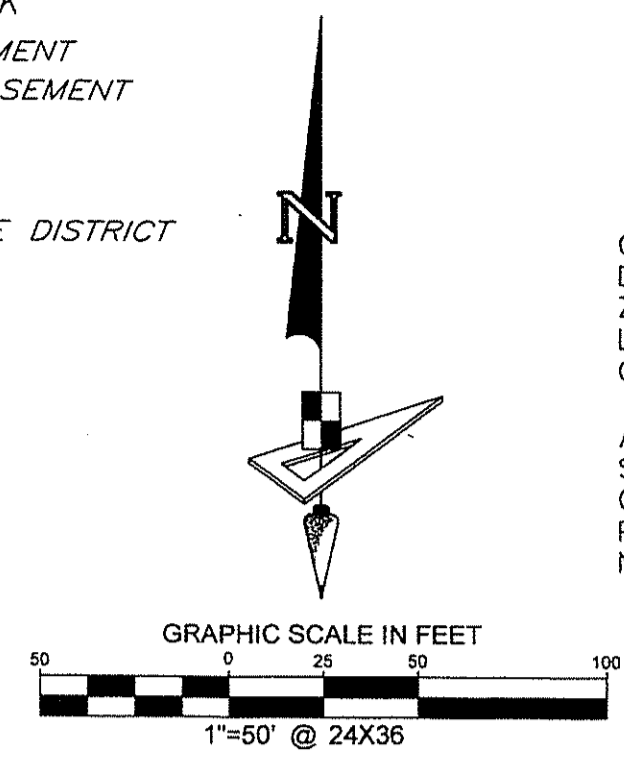


HARBOR CHASE AT WELLINGTON CROSSING, P.U.D.

BEING A REPLAT OF
A PORTION OF TRACTS 59 AND 60, BLOCK 24, PALM BEACH FARMS COMPANY, PLAT No. 3,
RECORDED IN PLAT BOOK 2, PAGES 45 TO 54, PUBLIC RECORDS OF PALM BEACH COUNTY, FLORIDA
LYING IN SECTION 29, TOWNSHIP 44 SOUTH, RANGE 42 EAST
PALM BEACH COUNTY, FLORIDA, SHEET 2 OF 2

- LEGEND**
- P.B. ----- PLAT BOOK
 - PG(S) ----- PAGE(S)
 - O.R.B. ----- OFFICIAL RECORD BOOK
 - L.A.E. ----- LIMITED ACCESS EASEMENT
 - L.M.E. ----- LAKE MAINTENANCE EASEMENT
 - UE ----- UTILITY EASEMENT
 - R/W ----- RIGHT OF WAY
 - L.W.D.D. ----- LAKE WORTH DRAINAGE DISTRICT
 - R ----- RADIUS
 - L ----- ARCH LENGTH
 - D ----- DELTA ANGLE
 - CB ----- CHORD BEARING
 - C ----- CHORD LENGTH
 - R.P.B. ----- ROAD PLAT BOOK
 - D.B. ----- DEED BOOK



COORDINATES SHOWN HEREON ARE FLORIDA STATE PLANE GRID
DATUM = NAD83 1990 ADJUSTMENT
ZONE = FLORIDA EAST
LINEAR UNITS = US SURVEY FEET
COORDINATE SYSTEM = 1983 STATE PLANE
(TRANSVERSE MERCATOR)
ALL DISTANCES ARE GROUND
SCALE FACTOR: 1.000023
GROUND DISTANCE X SCALE FACTOR = GRID DISTANCE
PLAT BEARING = GRID BEARING
NO ROTATION

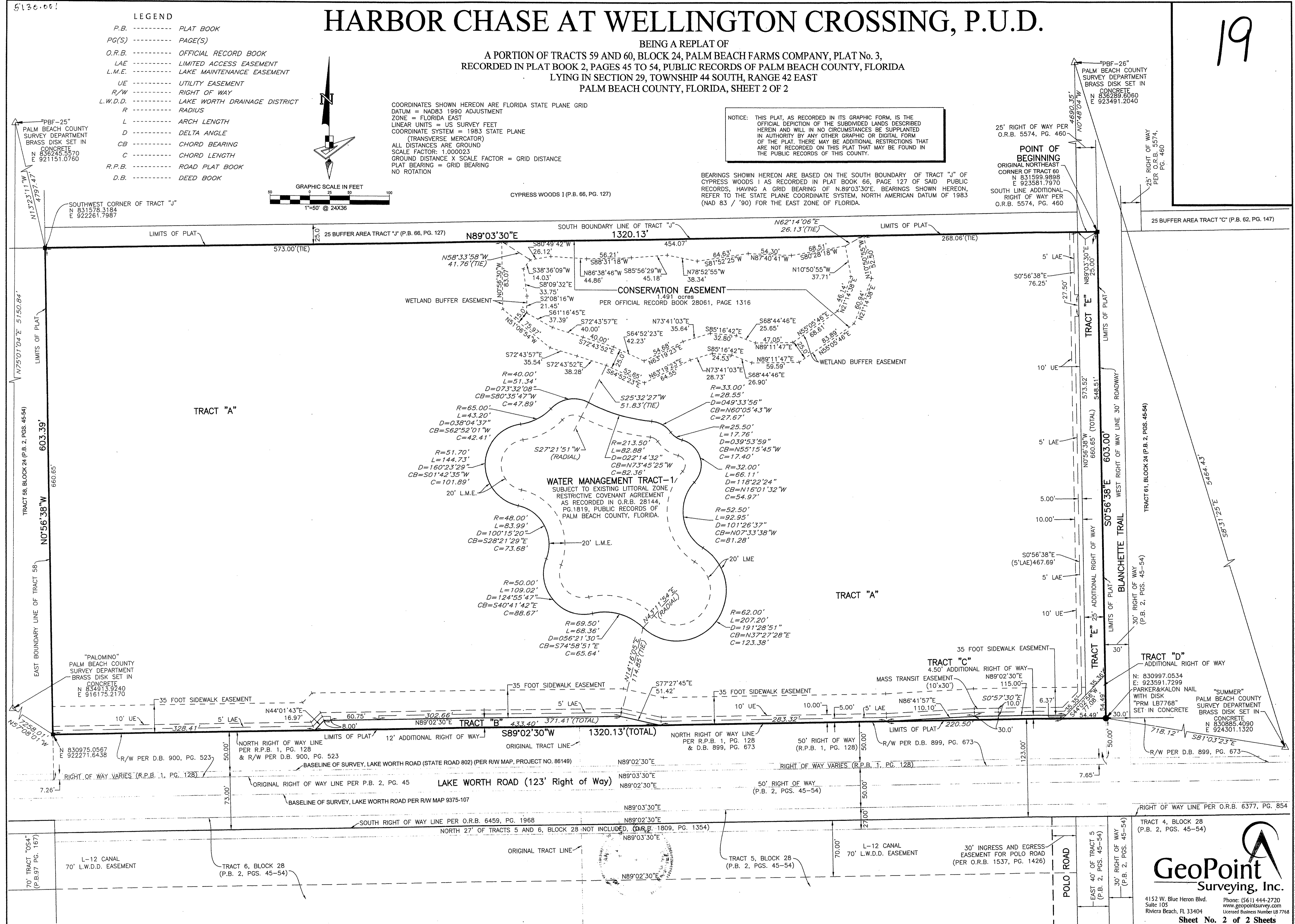
NOTICE: THIS PLAT, AS RECORDED IN ITS GRAPHIC FORM, IS THE OFFICIAL DEPICTION OF THE SUBDIVIDED LANDS DESCRIBED HEREIN AND WILL IN NO CIRCUMSTANCES BE SUPPLANTED IN AUTHORITY BY ANY OTHER GRAPHIC OR DIGITAL FORM OF THE PLAT. THERE MAY BE ADDITIONAL RESTRICTIONS THAT ARE NOT RECORDED ON THIS PLAT THAT MAY BE FOUND IN THE PUBLIC RECORDS OF THIS COUNTY.

BEARINGS SHOWN HEREON ARE BASED ON THE SOUTH BOUNDARY OF TRACT "J" OF CYPRESS WOODS I AS RECORDED IN PLAT BOOK 66, PAGE 127 OF SAID PUBLIC RECORDS, HAVING A GRID BEARING OF N89°03'30"E. BEARINGS SHOWN HEREON, REFER TO THE STATE PLANE COORDINATE SYSTEM, NORTH AMERICAN DATUM OF 1983 (NAD 83 / '90) FOR THE EAST ZONE OF FLORIDA.

"PBF-26"
PALM BEACH COUNTY
SURVEY DEPARTMENT
BRASS DISK SET IN
CONCRETE
N 832283.6060
E 923491.2040

25' RIGHT OF WAY PER
O.R.B. 5574, PG. 460

POINT OF BEGINNING
ORIGINAL NORTHEAST
CORNER OF TRACT 60
N 831599.9898
E 923581.7970
SOUTH LINE ADDITIONAL
RIGHT OF WAY PER
O.R.B. 5574, PG. 460



GeoPoint
Surveying, Inc.

4152 W. Blue Heron Blvd.
Suite 105
Riviera Beach, FL 33404

Phone: (561) 444-2720
www.geopointsurvey.com
Licensed Business Number LB 7768

Sheet No. 2 of 2 Sheets