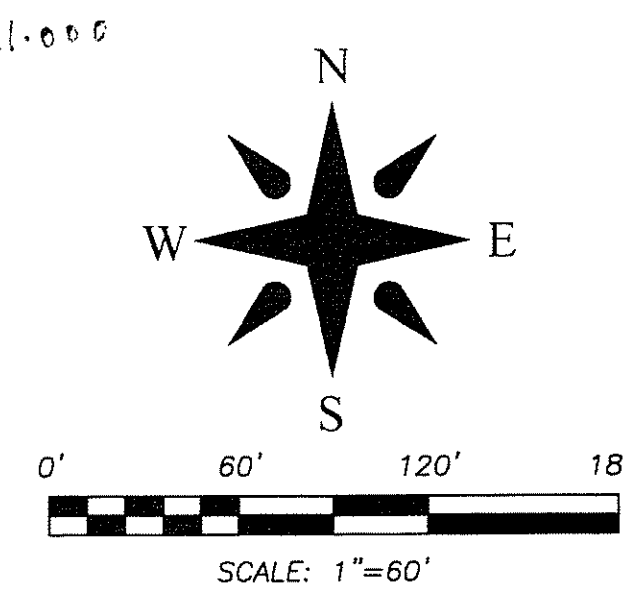


21

WINNERS CHURCH

BEING A REPLAT OF A PORTION OF TRACTS 13, 14 & 24, BLOCK 13, PALM BEACH FARMS COMPANY PLAT NO. 3, ACCORDING TO THE PLAT THEREOF, ON FILE IN THE OFFICE OF THE CLERK OF THE CIRCUIT COURT IN AND FOR PALM BEACH COUNTY, FLORIDA, RECORDED IN PLAT BOOK 2, PAGES 45 TO 54, LYING IN SECTION 3, TOWNSHIP 44 SOUTH, RANGE 42 EAST, PALM BEACH COUNTY, FLORIDA.



NORTH QUARTER CORNER SECTION 3/44/42 (FORMERLY A PK NAIL & ALUMINUM DISK "34/3, P.B.C., LS 4515" SET IN 2003. LOST WHEN NEW BRIDGE CONSTRUCTED. CERTIFIED CORNER RECORD # 80465 N: 853150.179 E: 935346.829) NOTE: THIS POSITION WAS LAST CERTIFIED ON 10/23/2003 AND SUPERSEDES THE PREVIOUS POSITION OF CERTIFIED CORNER RECORD # 20696 PER PALM BEACH COUNTY. FOR ADDITIONAL INFORMATION SEE RETRACEMENT SURVEY OF SECTIONS 2 & 3 TOWNSHIP 44 SOUTH, RANGE 42 EAST, PREPARED BY P.B.C. ACCORDING TO DRAWING No. S-3-03-1923, ON FILE IN THE OFFICE OF THE COUNTY ENGINEER.

NORTH QUARTER CORNER SECTION 3/44/42 (FORMERLY A P.B.C. BRASS DISK SET IN CONCRETE IN 1977. CERTIFIED CORNER RECORD # 20696 N: 853150.187 E: 935348.410) NOTE: THIS POSITION WAS LAST CERTIFIED ON 02/06/1985 AND ACQUIRES TO THE CURRENT POSITION OF CERTIFIED CORNER RECORD # 80465 PER PALM BEACH COUNTY. THIS POSITION WAS HELD FOR THIS PLAT AND AGREES WITH RECOVERED MONUMENTATION AS WELL AS RECORDED R/W DEDICATIONS FOR JOG AND PIONEER ROADS.

SHEET 2 OF 2

TRACT 10, BLOCK 13 PALM BEACH FARMS PLAT No.3 (P.B. 2, PG. 45)

TRACT 11, BLOCK 13 PALM BEACH FARMS PLAT No.3 (P.B. 2, PG. 45)

TRACT 12, BLOCK 13 PALM BEACH FARMS PLAT No.3 (P.B. 2, PG. 45)

TRACT 15, BLOCK 13 PALM BEACH FARMS PLAT No.3 (P.B. 2, PG. 45)

PARCEL A

PARCEL A

TRACT 14, BLOCK 13 PALM BEACH FARMS PLAT No.3 (P.B. 2, PG. 45)

REMAINDER OF TRACT 14, BLOCK 13 PALM BEACH FARMS PLAT No.3 (P.B. 2, PG. 45)

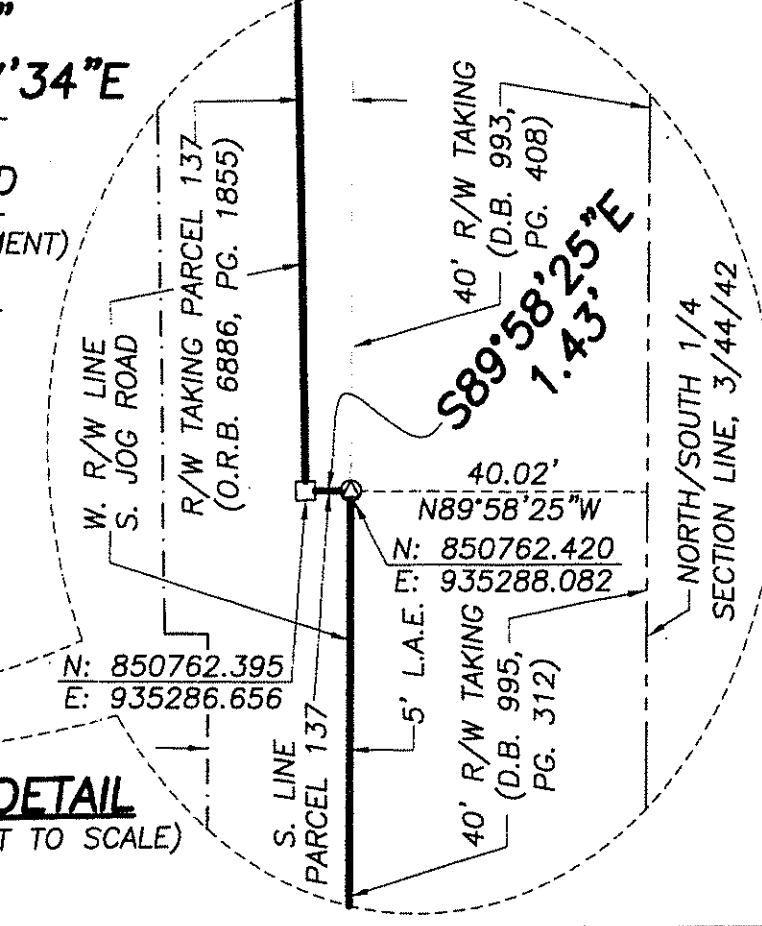
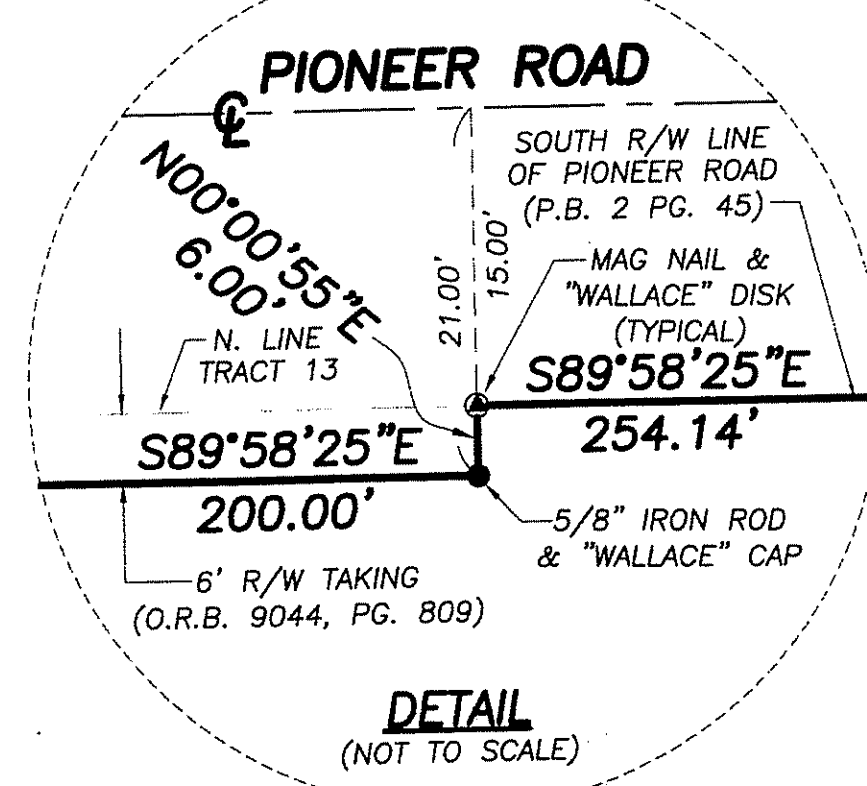
TRACT 23, BLOCK 13 PALM BEACH FARMS PLAT No.3 (P.B. 2, PG. 45)

TRACT 24, BLOCK 13 PALM BEACH FARMS PLAT No.3 (P.B. 2, PG. 45)

TRACT 22, BLOCK 13 PALM BEACH FARMS PLAT No.3 (P.B. 2, PG. 45)

ABBREVIATIONS AND SYMBOLS

□	= SET 4"x4" CONCRETE MONUMENT WITH DISK STAMPED "P.R.M. LB #4569"	D.E.	= DRAINAGE EASEMENT
○	= CONCRETE MONUMENT FOUND (AS NOTED ON MAP)	D.B.	= DEED BOOK
△	= FOUND MAG NAIL & DISK STAMPED "WALLACE"	A	= ARC LENGTH
∠	= SET MAG NAIL & DISK STAMPED "P.R.M. LB #4569"	∠	= CENTRAL ANGLE
○	= SET 5/8" IRON ROD & CAP STAMPED "LB #4569"	R	= RADIUS
○	= FOUND 5/8" IRON ROD & CAP STAMPED "WALLACE"	C.B.	= CHORD BEARING
○	= 5/8" IRON PIPE FOUND	O.R.B.	= OFFICIAL RECORDS BOOK
—	= CENTERLINE	R.P.B.	= ROAD PLAT BOOK
—	= RIGHT OF WAY	L.A.E.	= LIMITED ACCESS EASEMENT
—	= PLAT BOOK	P.O.B.	= POINT OF BEGINNING
—	= PAGES	P.O.C.	= POINT OF COMMENCEMENT
—	= SECTION	P.B.C.	= PALM BEACH COUNTY
—	= TOWNSHIP	N.T.S.	= NOT TO SCALE
—	= RANGE	N	= NORTHING
—	= UTILITY EASEMENT	E	= EASTING
—	= PALM BEACH FARMS	L.B.	= LANDSCAPE BUFFER
		P.B.C.U.E.	= PALM BEACH COUNTY UTILITY EASEMENT
		P.R.M.	= PERMANENT REFERENCE MONUMENT



PLAT OF:
WINNERS CHURCH

WALLACE SURVEYING
CORP. LICENSED BUSINESS #998
5553 VILLAGE BOULEVARD, WEST PALM BEACH, FLORIDA 33407 | 561-640-4551

FIELD: B.M.	JOB No.: 95-1112.22	F.B. WP127 PG. 69
OFFICE: R.C.	DATE: MARCH 2014	DWG. No.: 95-1112-B
C/K'D:	REF.: 95-1112-B.DWG	SHEET 2 OF 2