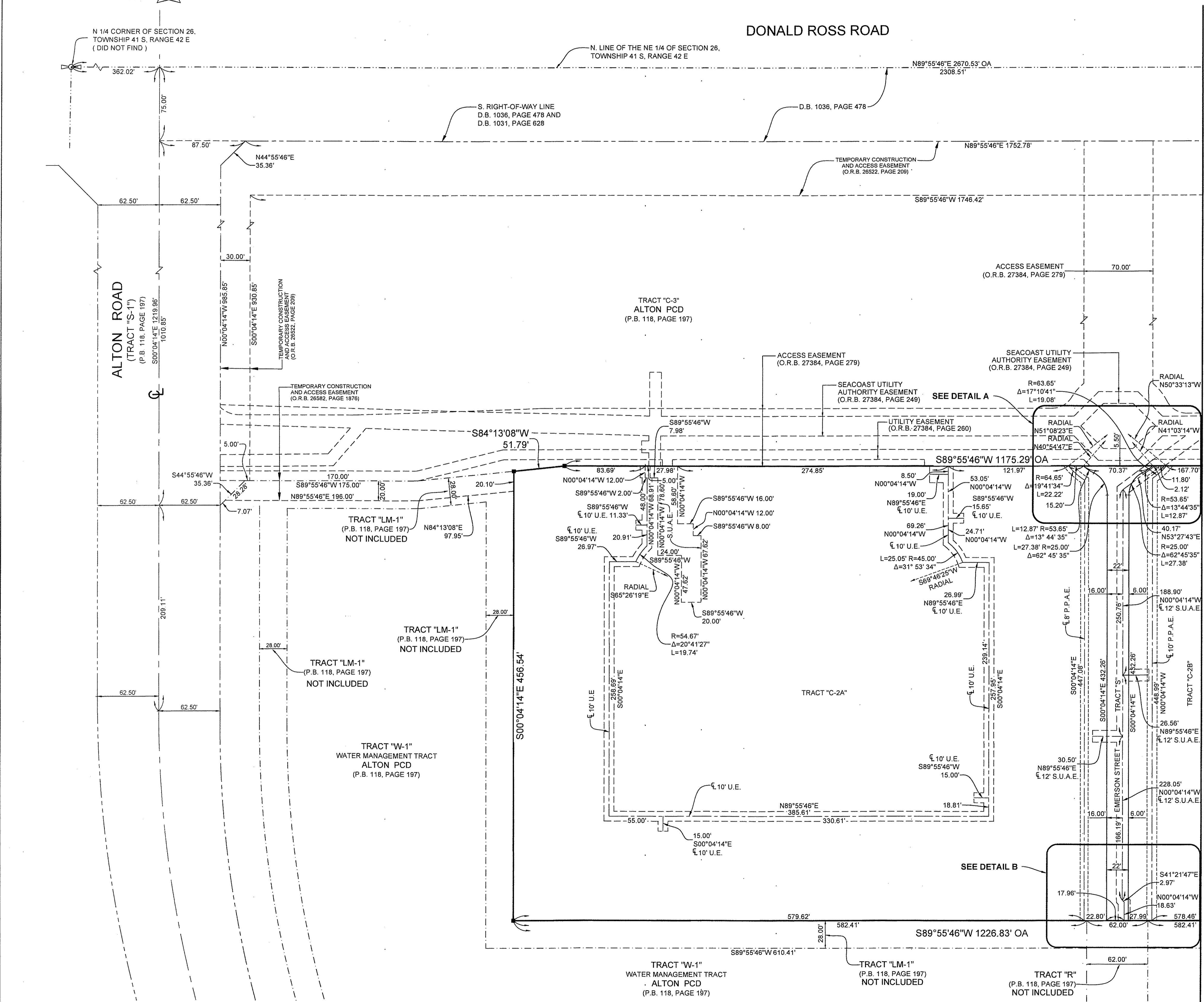
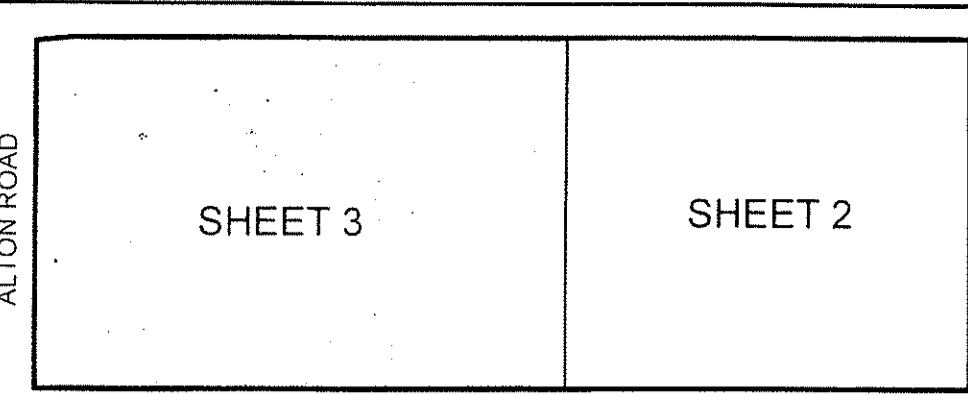
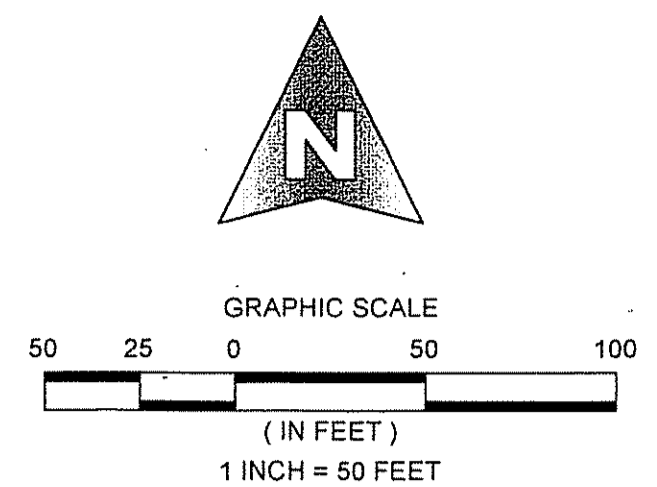


# ATLANTICO AT PALM BEACH GARDENS

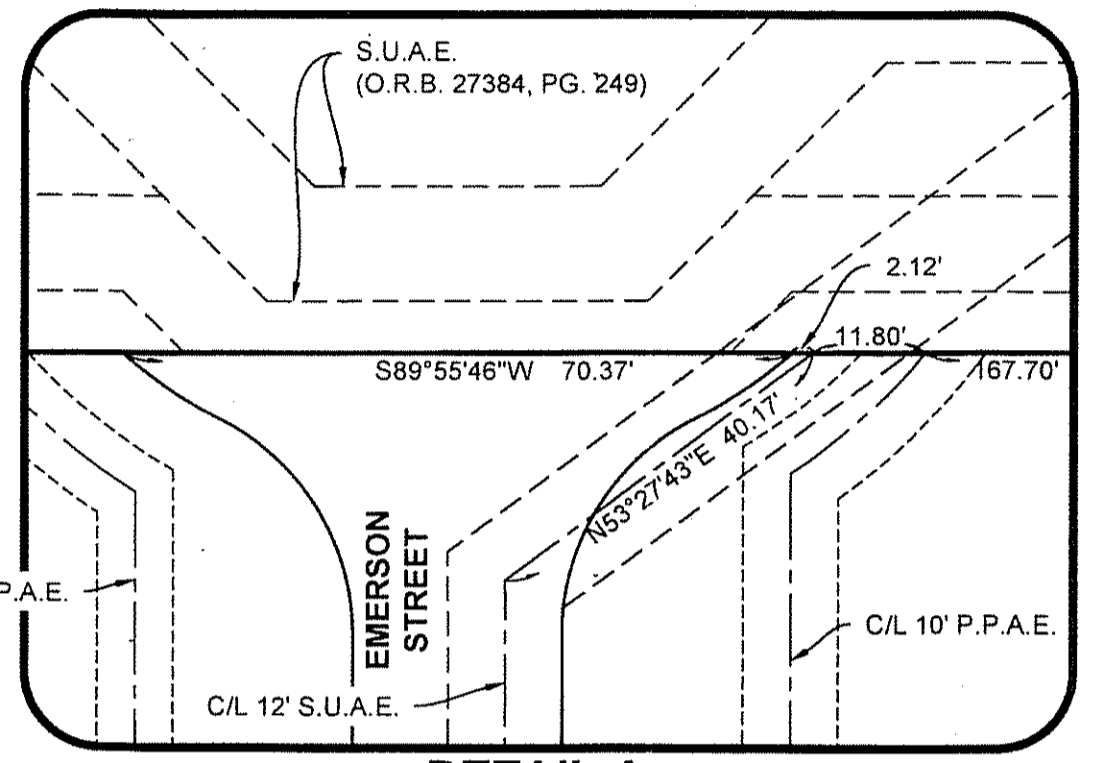
BEING A RE-PLAT OF TRACT "C-2", ALTON PCD,  
 AS RECORDED IN PLAT BOOK 118, PAGES 197 THROUGH 206, INCLUSIVE, PUBLIC RECORDS OF PALM BEACH COUNTY, FLORIDA,  
 LYING IN SECTION 26, TOWNSHIP 41 SOUTH, RANGE 42 EAST, CITY OF PALM BEACH GARDENS, PALM BEACH COUNTY, FLORIDA.  
 JULY, 2016 SHEET 3 OF 3

24

COUNTY OF PALM BEACH )  
 STATE OF FLORIDA ) SS  
 THIS PLAT WAS FILED FOR RECORD AT )  
 M. THIS ) DAY OF )  
 2016, AND DULY )  
 RECORDED IN PLAT BOOK NO. )  
 ON PAGE ) THRU )  
 SHARON R. BOCK,  
 CLERK AND COMPTROLLER  
 BY: \_\_\_\_\_ D.C.



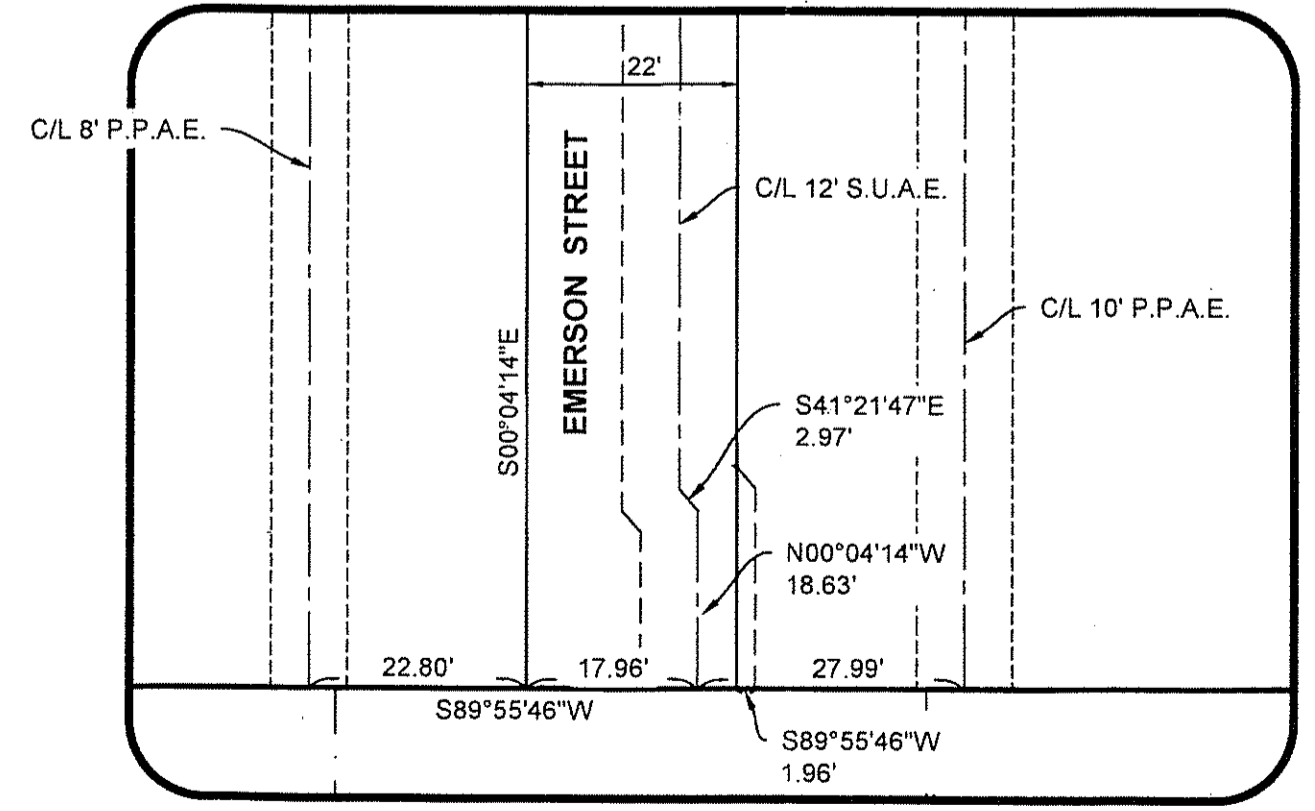
MATCH LINE - SEE SHEET 2



DETAIL A  
SCALE: 1" = 20'

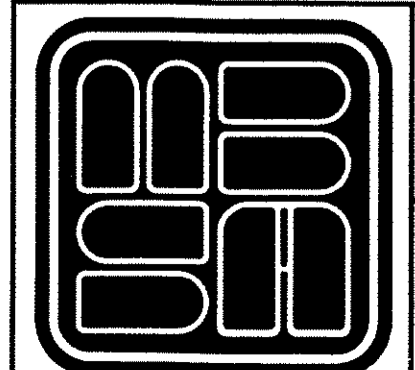
**LEGEND**

- P.O.B. = POINT OF BEGINNING
- P.O.C. = POINT OF COMMENCEMENT
- P.R.M. = PERMANENT REFERENCE MONUMENT
- O.R.B. = OFFICIAL RECORD BOOK
- D.B. = DEED BOOK
- P.B. = PLAT BOOK
- PBC = PALM BEACH COUNTY
- TYP. = TYPICAL
- FND. = FOUND
- R/W. = RIGHT OF WAY
- U.E. = UTILITY EASEMENT
- R. = RADIUS
- L. = ARC LENGTH
- Δ = CURVE CENTRAL ANGLE
- C.B. = CHORD BEARING
- C.L. = CHORD LENGTH
- P.B.E. = PARKWAY BUFFER EASEMENT
- R.B.E. = ROADWAY BUFFER EASEMENT
- S.U.A.E. = SEACOAST UTILITY AUTHORITY EASEMENT
- I.R. = IRON ROD
- L.A.E. = LIMITED ACCESS EASEMENT
- FPL. = FLORIDA POWER AND LIGHT COMPANY
- W.M.E. = WATER MANAGEMENT EASEMENT
- F.D.O.T. = FLORIDA DEPARTMENT OF TRANSPORTATION
- SUA = SEACOAST UTILITY AUTHORITY
- NPBCID = NORTHERN PALM BEACH COUNTY IMPROVEMENT DISTRICT
- PCD = PLANNED COMMUNITY DEVELOPMENT
- OA = OVERALL
- P.S.M. = PROFESSIONAL SURVEYOR AND MAPPER
- P.P.A.E. = PERPETUAL PUBLIC ACCESS EASEMENT
- ☐ = CENTERLINE
- = SET 4"X4"X24" CONCRETE MONUMENT WITH DISK, STAMPED "SCHORAH AND ASSOCIATES PRM LB#2438"



DETAIL B  
SCALE: 1" = 20'

SHEET 3 OF 3



**MICHAEL B. SCHORAH & ASSOCIATES, INC.**  
 1850 FOREST HILL BLVD., SUITE 206  
 WEST PALM BEACH, FLORIDA 33406  
 EB# 2438 TEL. (561) 968-0080 FAX. (561) 642-9726 LB# 2438

**ATLANTICO AT PALM BEACH GARDENS**