

# ARDEN P.U.D. PLAT 1

BEING A PARCEL OF LAND, LYING IN SECTIONS 21, 22, 27, 28, 33 AND 34,  
TOWNSHIP 43 SOUTH, RANGE 40 EAST, PALM BEACH COUNTY, FLORIDA.  
SHEET 4 OF 20

35

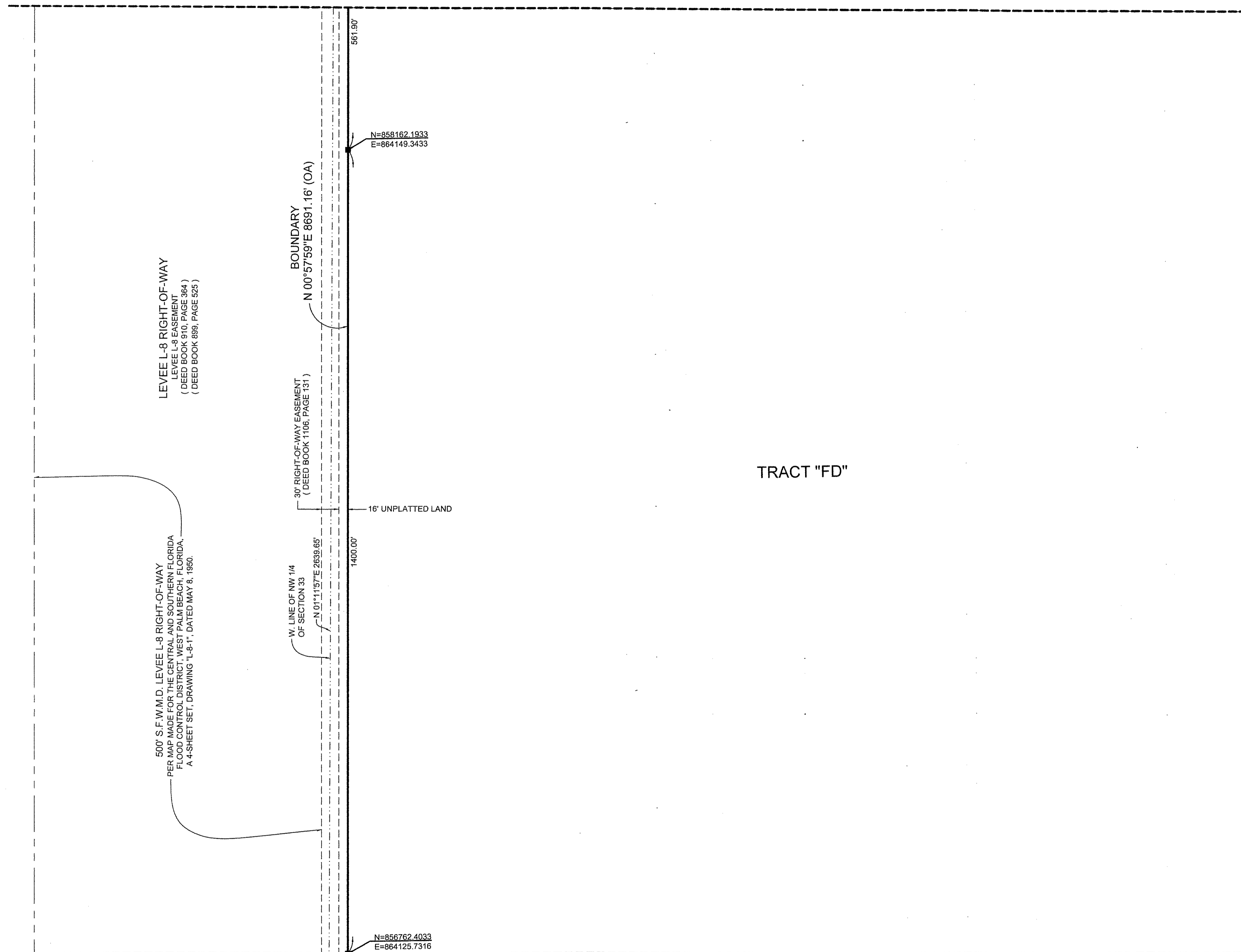
COUNTY OF PALM BEACH )  
STATE OF FLORIDA ) SS

THIS PLAT WAS FILED FOR RECORD AT \_\_\_\_\_ M. THIS \_\_\_\_\_ DAY OF \_\_\_\_\_ 2016, AND DULY  
RECORDED IN PLAT BOOK NO. \_\_\_\_\_  
ON PAGE \_\_\_\_\_ THRU \_\_\_\_\_

SHARON R. BOCK,  
CLERK AND COMPTROLLER

BY: \_\_\_\_\_, D.C.

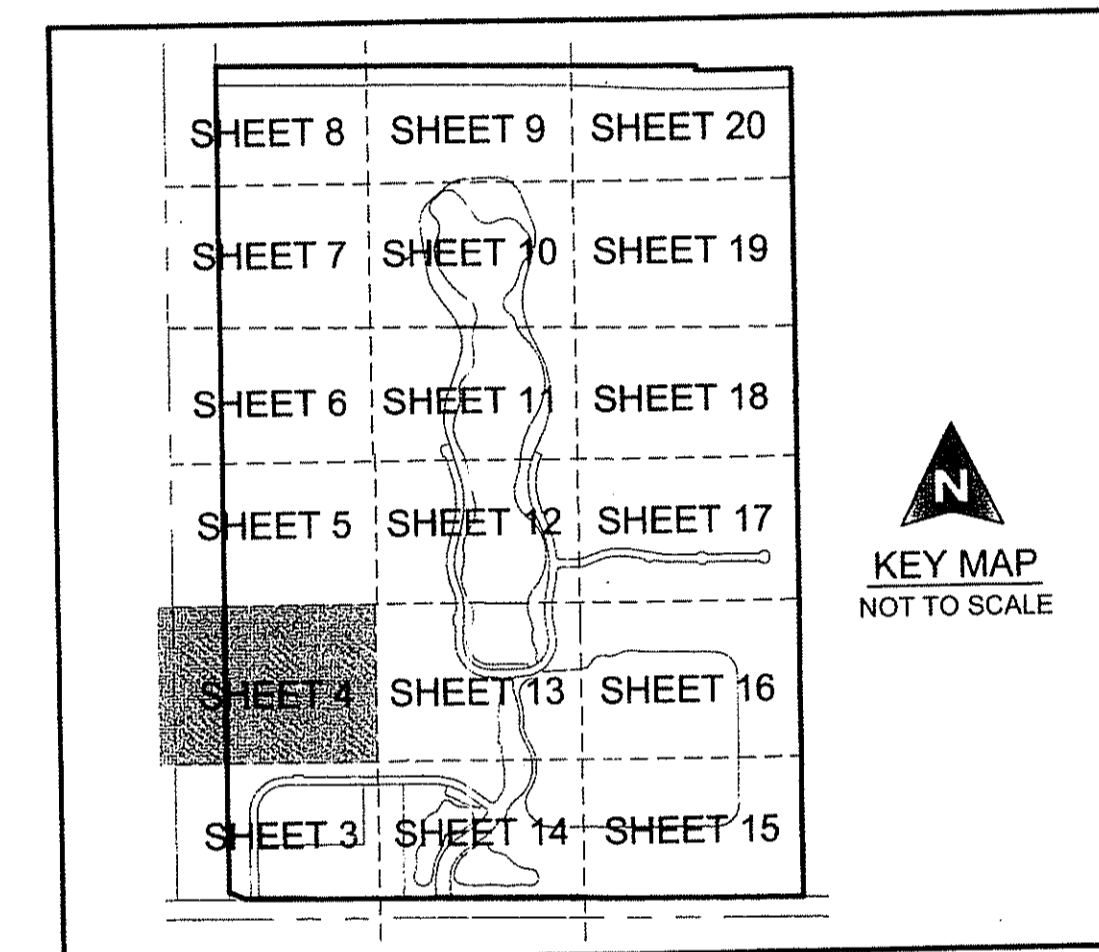
MATCH TO SHEET 5



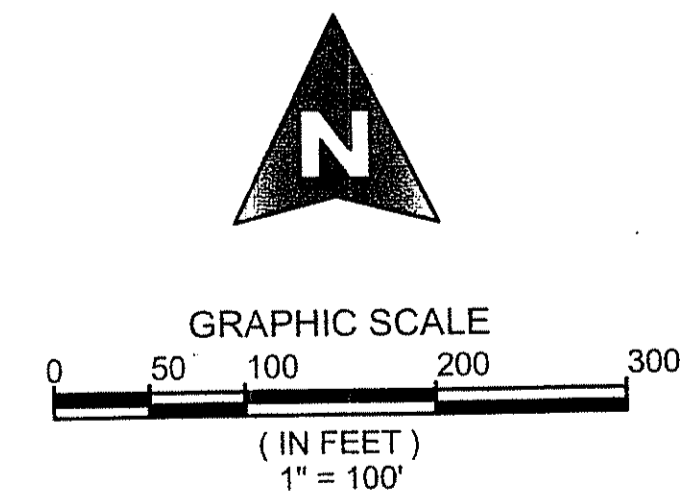
TRACT "FD"

MATCH TO SHEET 13

MATCH TO SHEET 3



COORDINATE NOTE:  
STATE PLANE COORDINATES SHOWN ARE GRID DATUM, NAD 83 1990 ADJUSTMENT, FLORIDA EAST ZONE, COORDINATE SYSTEM 1983 STATE PLANE, TRANSVERSE MERCATOR PROJECTION  
LINEAR UNIT = US SURVEY FEET  
ALL DISTANCES ARE GROUND  
SCALE FACTOR = 0.99999219  
GROUND DISTANCE X SCALE FACTOR = GRID DISTANCE  
BEARINGS AS SHOWN HEREON ARE GRID DATUM, NAD 83 1990 ADJUSTMENT, FLORIDA EAST ZONE.



SHEET 4 OF 20



**MICHAEL B. SCHORAH & ASSOCIATES, INC.**  
1850 FOREST HILL BLVD., SUITE 206  
WEST PALM BEACH, FLORIDA 33406  
EB# 2438 TEL. (561) 968-0080 FAX. (561) 642-9726 LB# 2438

**ARDEN P.U.D. PLAT 1**