

5168-001

ARDEN P.U.D. PLAT 1

BEING A PARCEL OF LAND, LYING IN SECTIONS 21, 22, 27, 28, 33 AND 34,
TOWNSHIP 43 SOUTH, RANGE 40 EAST, PALM BEACH COUNTY, FLORIDA.
SHEET 7 OF 20

38

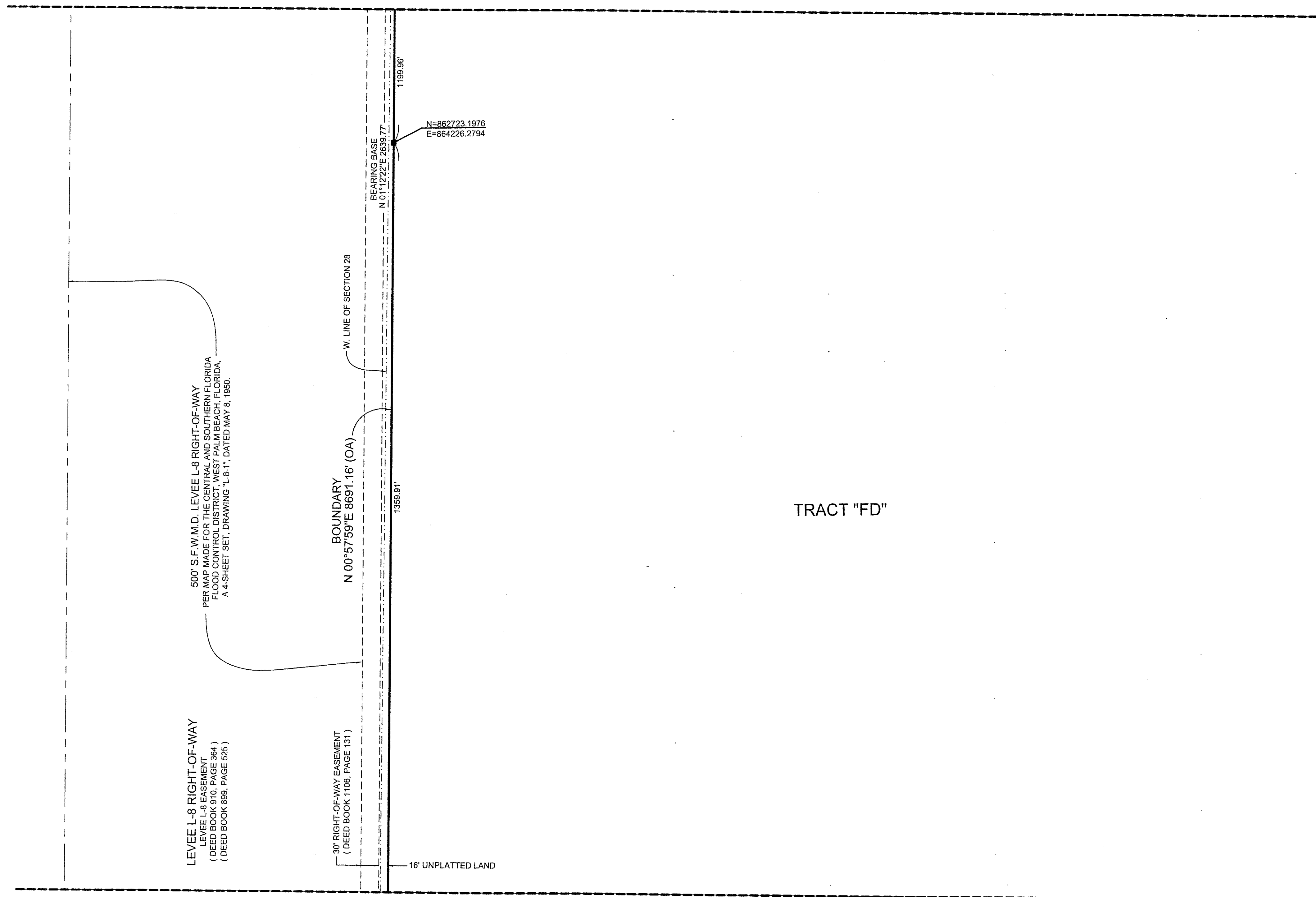
COUNTY OF PALM BEACH)
STATE OF FLORIDA) SS

THIS PLAT WAS FILED FOR RECORD AT _____ M. THIS _____ DAY OF _____ 2016, AND DULY
RECORDED IN PLAT BOOK NO. _____
ON PAGE _____ THRU _____

SHARON R. BOCK,
CLERK AND COMPTROLLER

BY: _____ D.C.

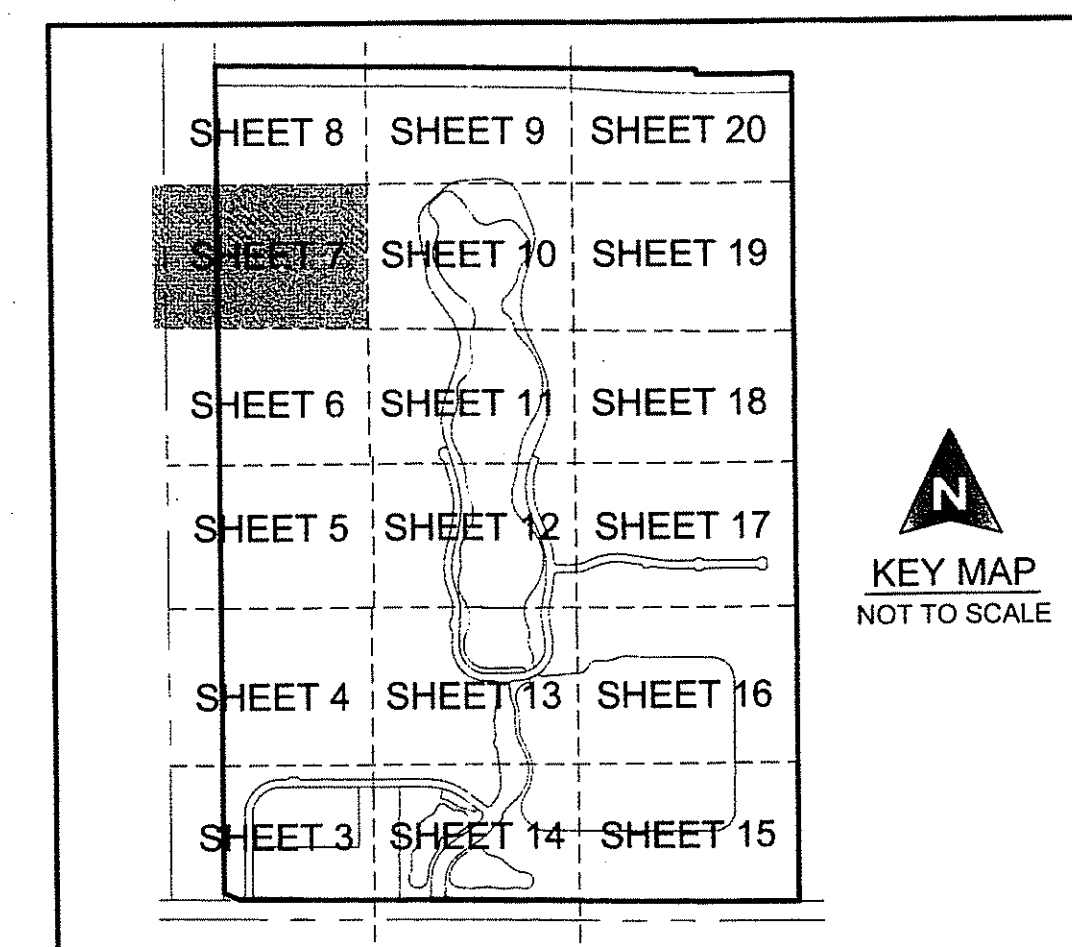
MATCH TO SHEET 8



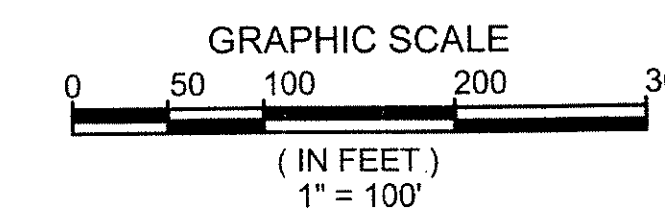
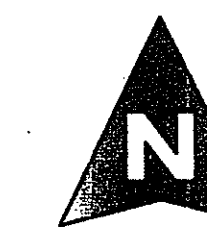
TRACT "FD"

MATCH TO SHEET 10

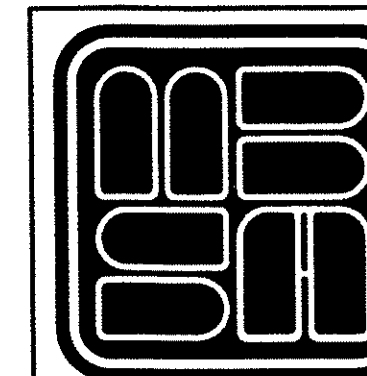
MATCH TO SHEET 6



COORDINATE NOTE:
STATE PLANE COORDINATES SHOWN ARE GRID DATUM, NAD 83 1990
ADJUSTMENT, FLORIDA EAST ZONE, COORDINATE SYSTEM 1983 STATE
PLANE, TRANSVERSE MERCATOR PROJECTION
LINEAR UNIT = US SURVEY FEET
ALL DISTANCES ARE GROUND
SCALE FACTOR = 0.99999219
GROUND DISTANCE X SCALE FACTOR = GRID DISTANCE
BEARINGS AS SHOWN HEREON ARE GRID DATUM, NAD 83 1990
ADJUSTMENT, FLORIDA EAST ZONE.



SHEET 7 OF 20



**MICHAEL B. SCHORAH
& ASSOCIATES, INC.**
1850 FOREST HILL BLVD., SUITE 208
WEST PALM BEACH, FLORIDA 33406
EB# 2438 TEL. (561) 988-0080 FAX. (561) 642-9726 LB# 2438

ARDEN P.U.D. PLAT 1