

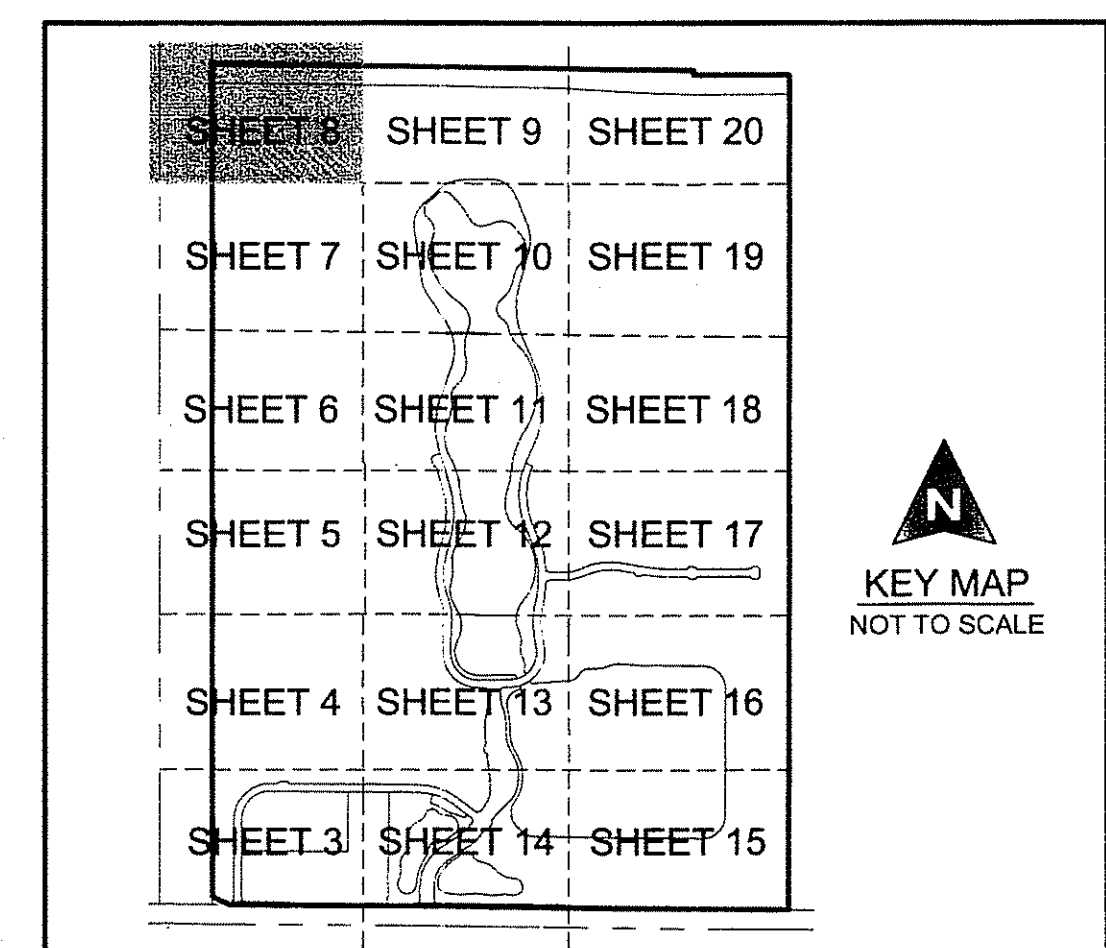
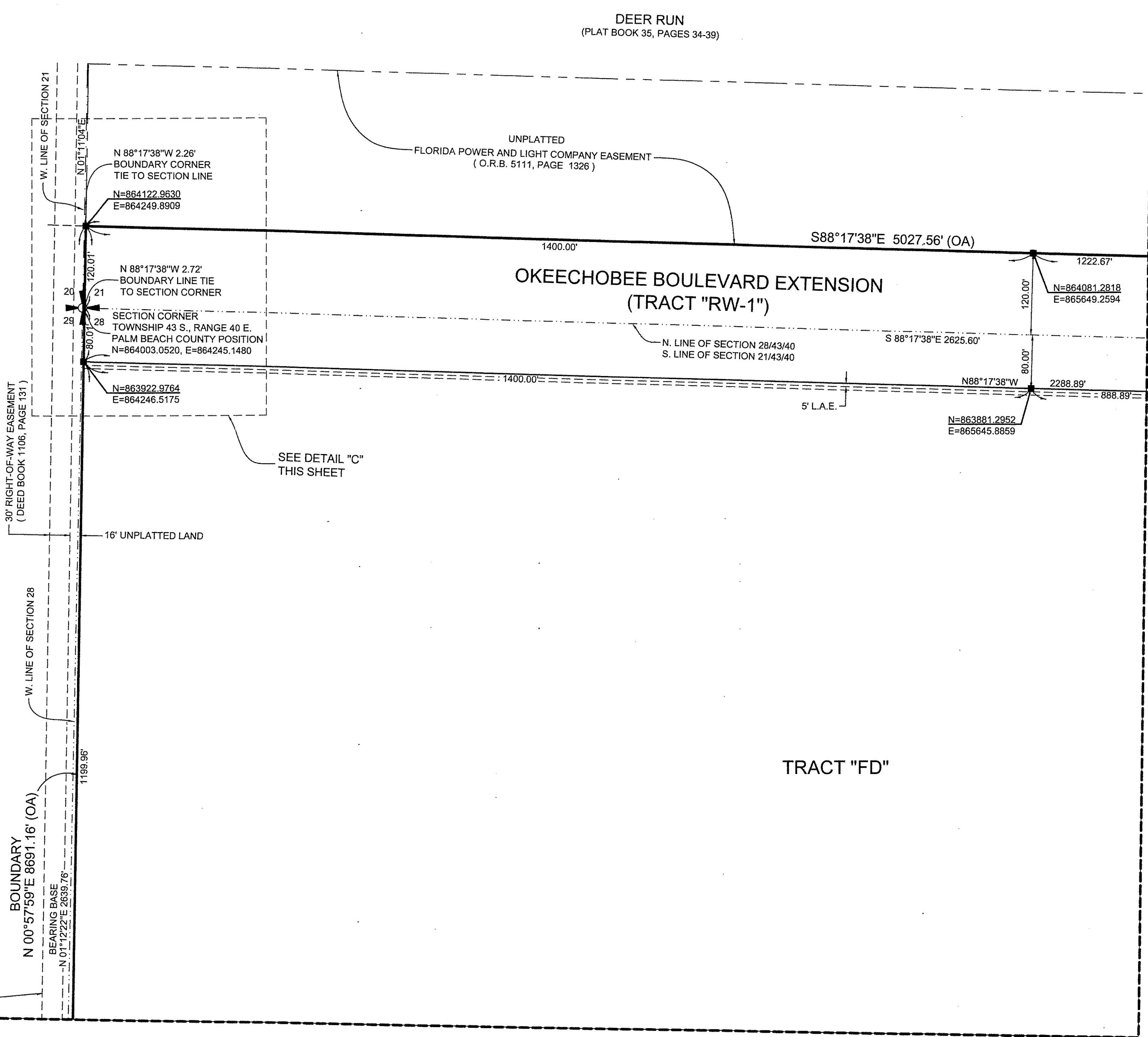
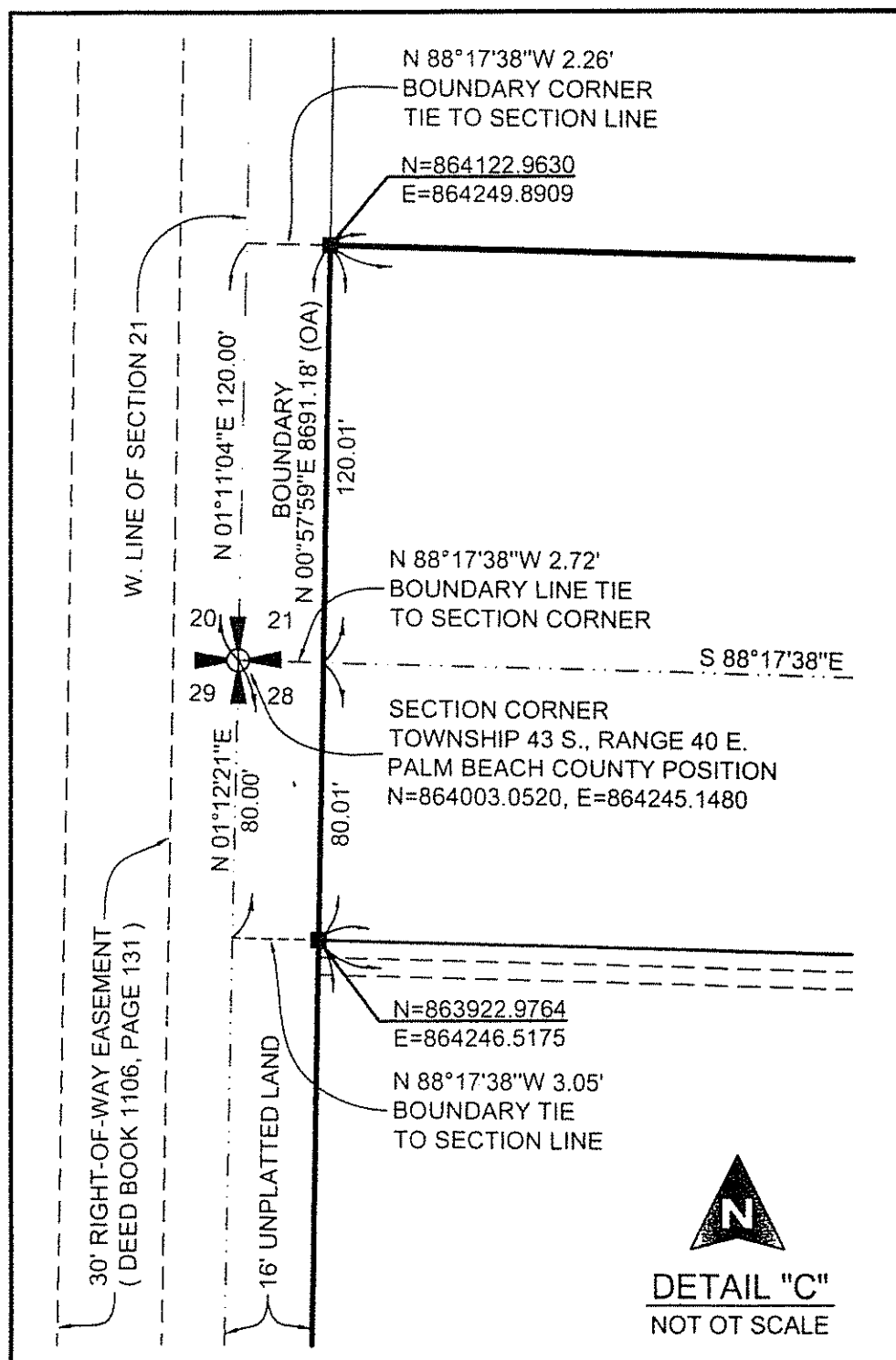
ARDEN P.U.D. PLAT 1

BEING A PARCEL OF LAND, LYING IN SECTIONS 21, 22, 27, 28, 33 AND 34,
TOWNSHIP 43 SOUTH, RANGE 40 EAST, PALM BEACH COUNTY, FLORIDA.

SHEET 8 OF 20

39

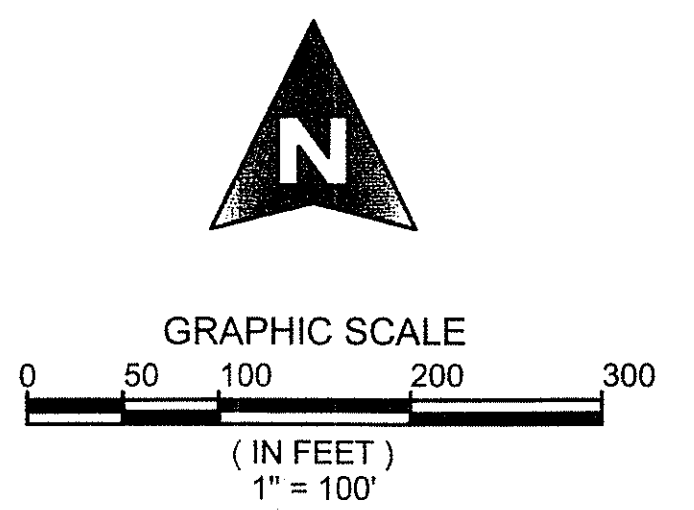
COUNTY OF PALM BEACH)
 STATE OF FLORIDA) SS
 THIS PLAT WAS FILED FOR RECORD AT)
 _____ M. THIS _____ DAY OF)
 RECORDED IN PLAT BOOK NO. _____)
 ON PAGE _____ THRU _____)
 SHARON R. BOCK,
 CLERK AND COMPTROLLER
 BY: _____, D.C.



LEVEE L-8 RIGHT-OF-WAY
 LEVEE L-8 EASEMENT
 (DEED BOOK 910, PAGE 364)
 (DEED BOOK 899, PAGE 525)

500' S.F.W.M.D. LEVEE L-8 RIGHT-OF-WAY
 PER MAP MADE FOR THE CENTRAL AND SOUTHERN FLORIDA
 FLOOD CONTROL DISTRICT, WEST PALM BEACH, FLORIDA
 A 4-SHEET SET, DRAWING "L-8-1", DATED MAY 8, 1950.

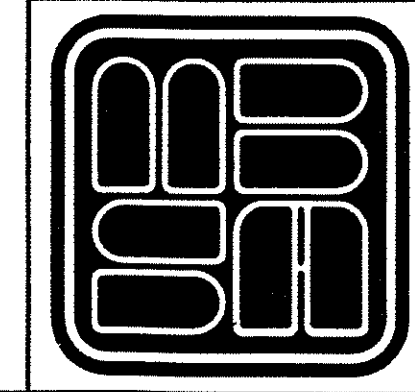
COORDINATE NOTE:
 STATE PLANE COORDINATES SHOWN ARE GRID DATUM, NAD 83 1990
 ADJUSTMENT, FLORIDA EAST ZONE. COORDINATE SYSTEM 1983 STATE
 PLANE, TRANSVERSE MERCATOR PROJECTION
 LINEAR UNIT = US SURVEY FEET
 ALL DISTANCES ARE GROUND
 SCALE FACTOR = 0.99999219
 GROUND DISTANCE X SCALE FACTOR = GRID DISTANCE
 BEARINGS AS SHOWN HEREON ARE GRID DATUM, NAD 83 1990
 ADJUSTMENT, FLORIDA EAST ZONE.



MATCH TO SHEET 7

MATCH TO SHEET 9

SHEET 8 OF 20



MICHAEL B. SCHORAH & ASSOCIATES, INC.
 1850 FOREST HILL BLVD., SUITE 206
 WEST PALM BEACH, FLORIDA 33406
 EB# 2438 TEL. (561) 968-0080 FAX. (561) 642-9726 LB# 2438

ARDEN P.U.D. PLAT 1