

5168-001

ARDEN P.U.D. PLAT 1

BEING A PARCEL OF LAND, LYING IN SECTIONS 21, 22, 27, 28, 33 AND 34,
TOWNSHIP 43 SOUTH, RANGE 40 EAST, PALM BEACH COUNTY, FLORIDA.
SHEET 19 OF 20

50

COUNTY OF PALM BEACH)
STATE OF FLORIDA) SS

THIS PLAT WAS FILED FOR RECORD AT
M. THIS DAY OF
2016, AND DULY
RECORDED IN PLAT BOOK NO. _____
ON PAGE _____ THRU _____

SHARON R. BOCK
CLERK AND COMPTROLLER
BY: _____, D.C.

MATCH TO SHEET 20

MATCH TO SHEET 10

TRACT "FD"

E. LINE OF SECTION 28
W. LINE OF SECTION 27
N 01°02'42"E 2639.93'

N=862589.9094
E=870251.1724

1115.24'

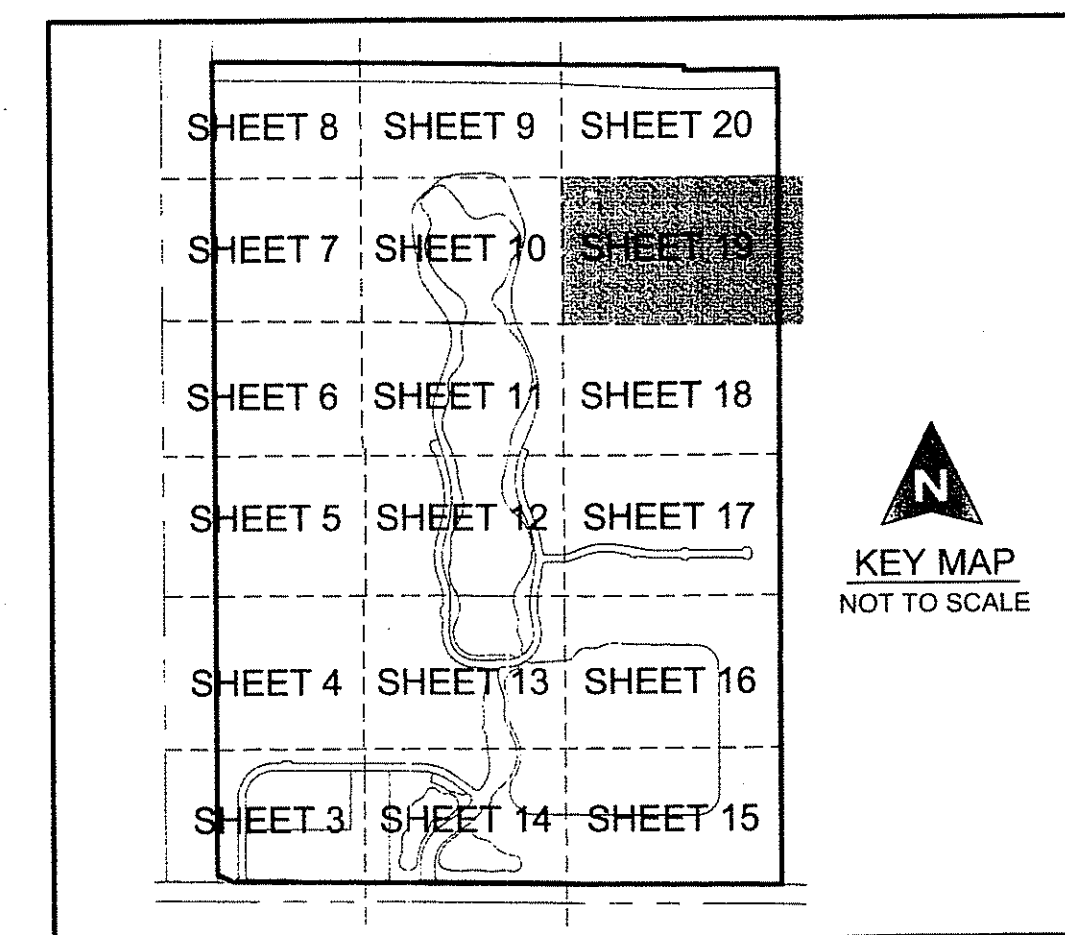
THE EAST LINE OF THE
WEST 780' OF SECTION 27 1/4 3/40

1400.00'

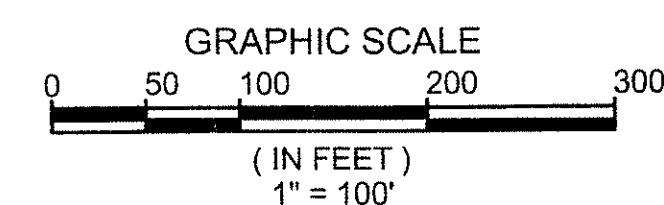
S 01°02'42"W 5283.20' (OA)

UNPLATTED

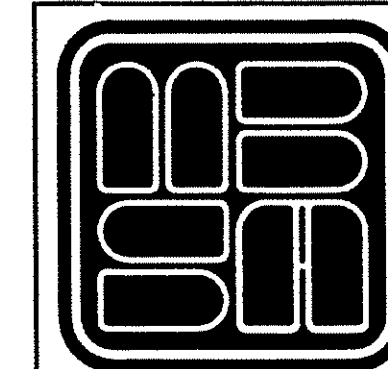
MATCH TO SHEET 18



COORDINATE NOTE:
STATE PLANE COORDINATES SHOWN ARE GRID DATUM, NAD 83 1990
ADJUSTMENT, FLORIDA EAST ZONE, COORDINATE SYSTEM 1983 STATE
PLANE, TRANSVERSE MERCATOR PROJECTION
LINEAR UNIT = US SURVEY FEET
ALL DISTANCES ARE GROUND
SCALE FACTOR = 0.99999219
GROUND DISTANCE X SCALE FACTOR = GRID DISTANCE
BEARINGS AS SHOWN HEREON ARE GRID DATUM, NAD 83 1990
ADJUSTMENT, FLORIDA EAST ZONE.



SHEET 19 OF 20



**MICHAEL B. SCHORAH
& ASSOCIATES, INC.**
1850 FOREST HILL BLVD., SUITE 206
WEST PALM BEACH, FLORIDA 33406
EB# 2438 TEL. (561) 968-0080 FAX. (561) 642-9726 LB# 2438

ARDEN P.U.D. PLAT 1