

THIS INSTRUMENT PREPARED BY
DAVID P. LINDLEY
OF
CAULFIELD and WHEELER, INC.
SURVEYORS - ENGINEERS - PLANNERS
7900 GLADES ROAD, SUITE 100
BOCA RATON, FLORIDA 33434 - (561)392-1991

CHEVRON 51345

BEING A REPLAT OF A PORTION OF TRACT 120 OF THE PLAT OF SUBDIVISION OF S.E. 1/4 AND W. 1/2 OF S.W. 1/4 OF SEC. 16, TOWNSHIP 46S, RANGE 42E,
ACCORDING TO THE PLAT THEREOF, AS RECORDED IN PLAT BOOK 1, AT PAGE 158 OF THE PUBLIC RECORDS OF PALM BEACH COUNTY, FLORIDA

63

STATE OF FLORIDA
COUNTY OF PALM BEACH
THIS PLAT WAS FILED FOR
RECORD AT _____ M.
THIS _____ DAY OF
A.D. 20____ AND DULY RECORDED
IN PLAT BOOK _____ ON
PAGES _____ AND _____

SHARON R. BOCK
CLERK AND COMPTROLLER

BY: _____
DEPUTY CLERK

SHEET 2 OF 2

TRACT 106
PLAT OF SUBDIVISION OF S.E. 1/4 AND W. 1/2 OF
THE S.W. 1/4 OF SECTION 16
TOWNSHIP 46S RANGE 42E
(PLAT BOOK 1, PAGE 158)

TRACT 105
PLAT OF SUBDIVISION OF S.E. 1/4 AND W. 1/2 OF
THE S.W. 1/4 OF SECTION 16
TOWNSHIP 46S RANGE 42E
(PLAT BOOK 1, PAGE 158)

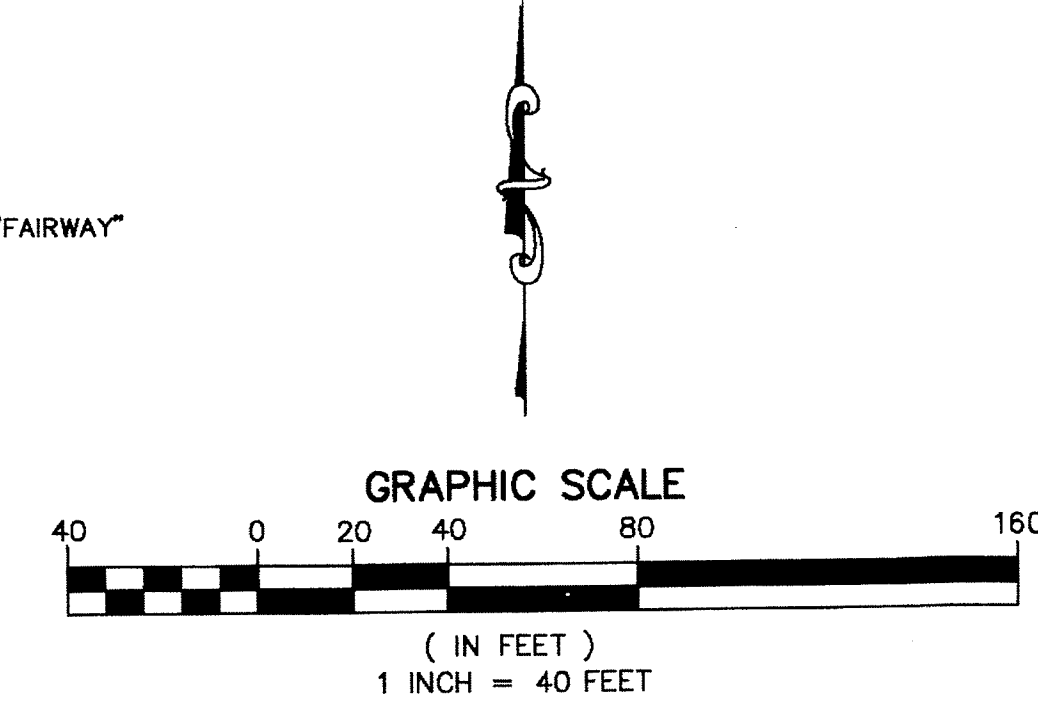
TRACT 119
PLAT OF SUBDIVISION OF S.E. 1/4 AND W. 1/2 OF
THE S.W. 1/4 OF SECTION 16
TOWNSHIP 46S RANGE 42E
(PLAT BOOK 1, PAGE 158)

NOT INCLUDED
THE NORTH 139.00' OF THE
E. 1/2 OF THE S.E. 1/4 OF THE S.W. 1/4
OF SECTION 16, TOWNSHIP 46 SOUTH, RANGE 42 EAST

CENTER OF SECTION 16-46-42
NO MONUMENT FOUND
CALCULATED POSITION
PER PALM BEACH COUNTY SURVEY DEPARTMENT

FOUND PALM BEACH COUNTY
HORIZONTAL CONTROL POINT "EMERALD"
N 774255.863
E 929929.591

FOUND PALM BEACH COUNTY
HORIZONTAL CONTROL POINT "FAIRWAY"
N 774289.327
E 932507.861

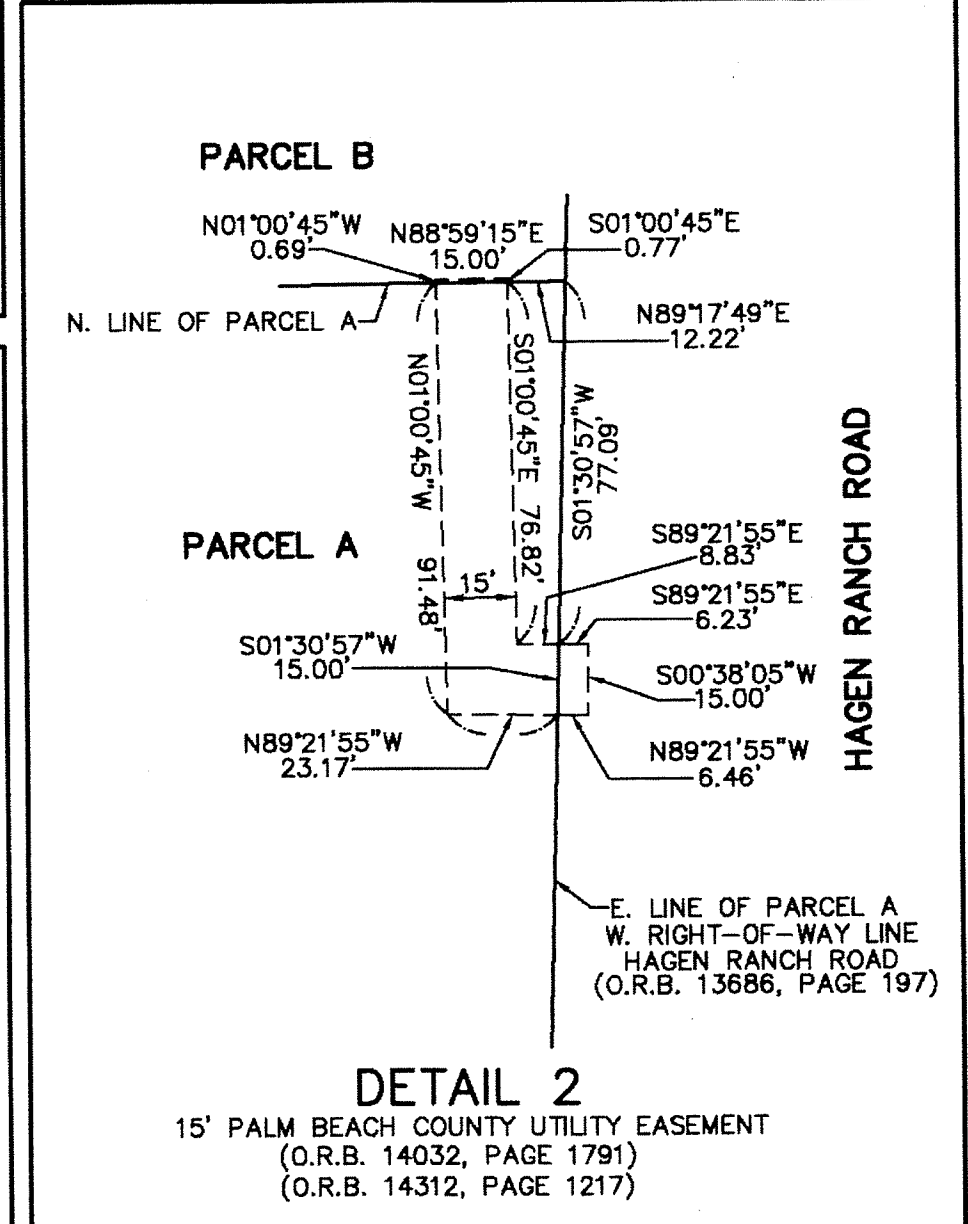
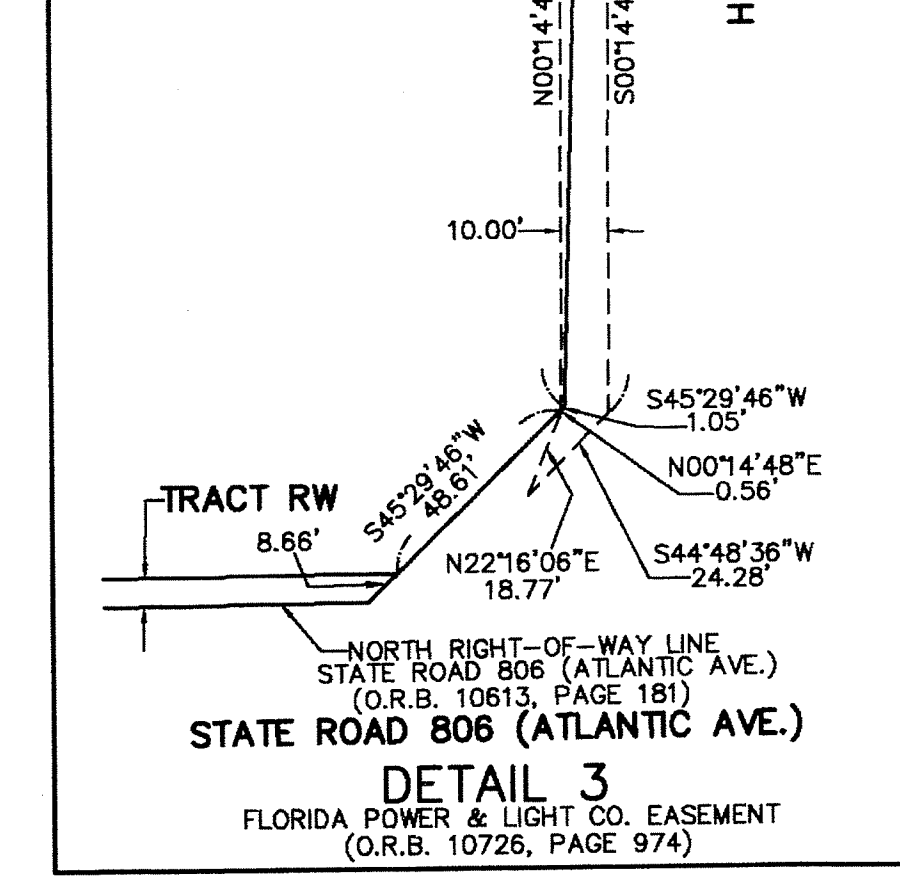
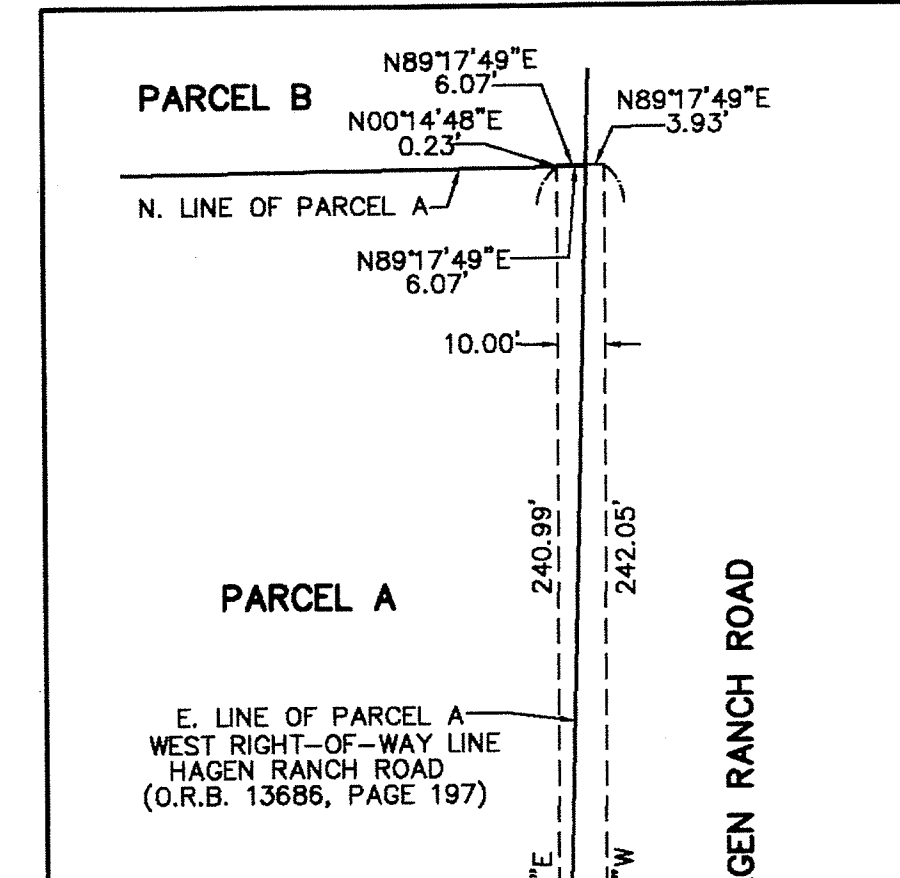
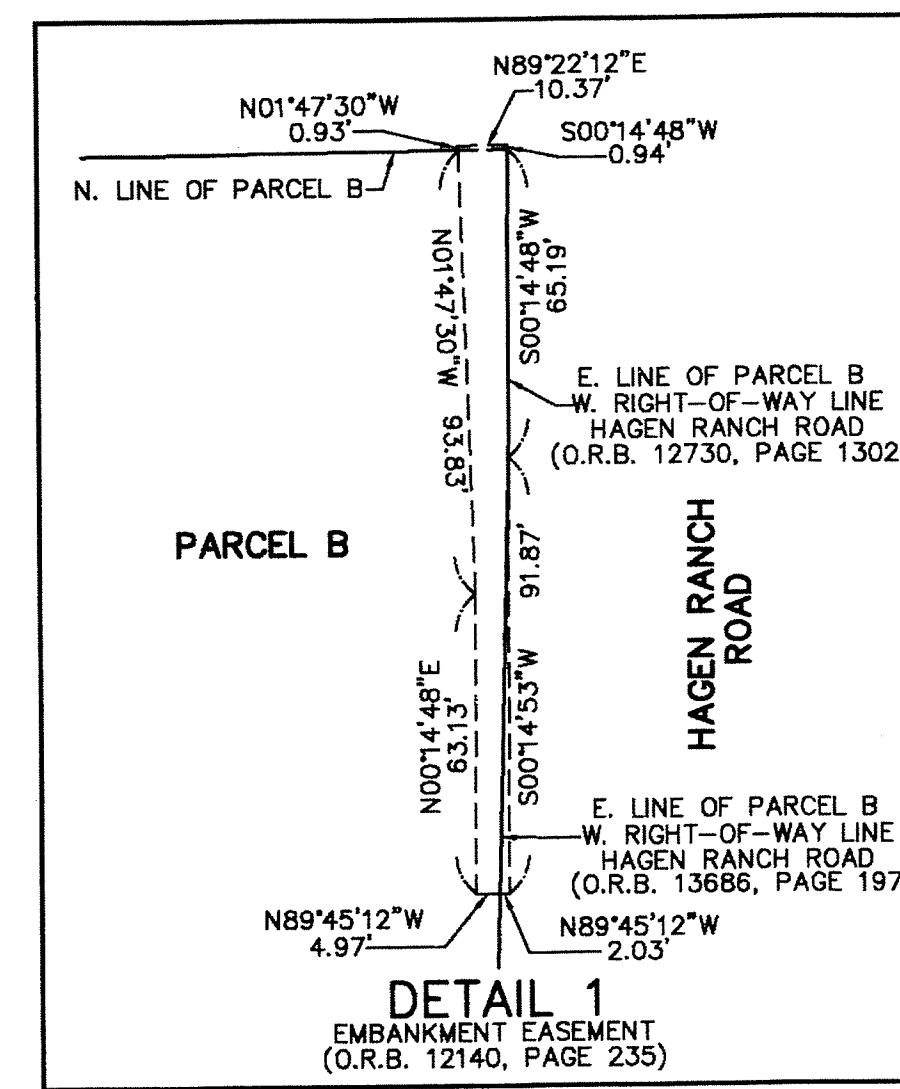
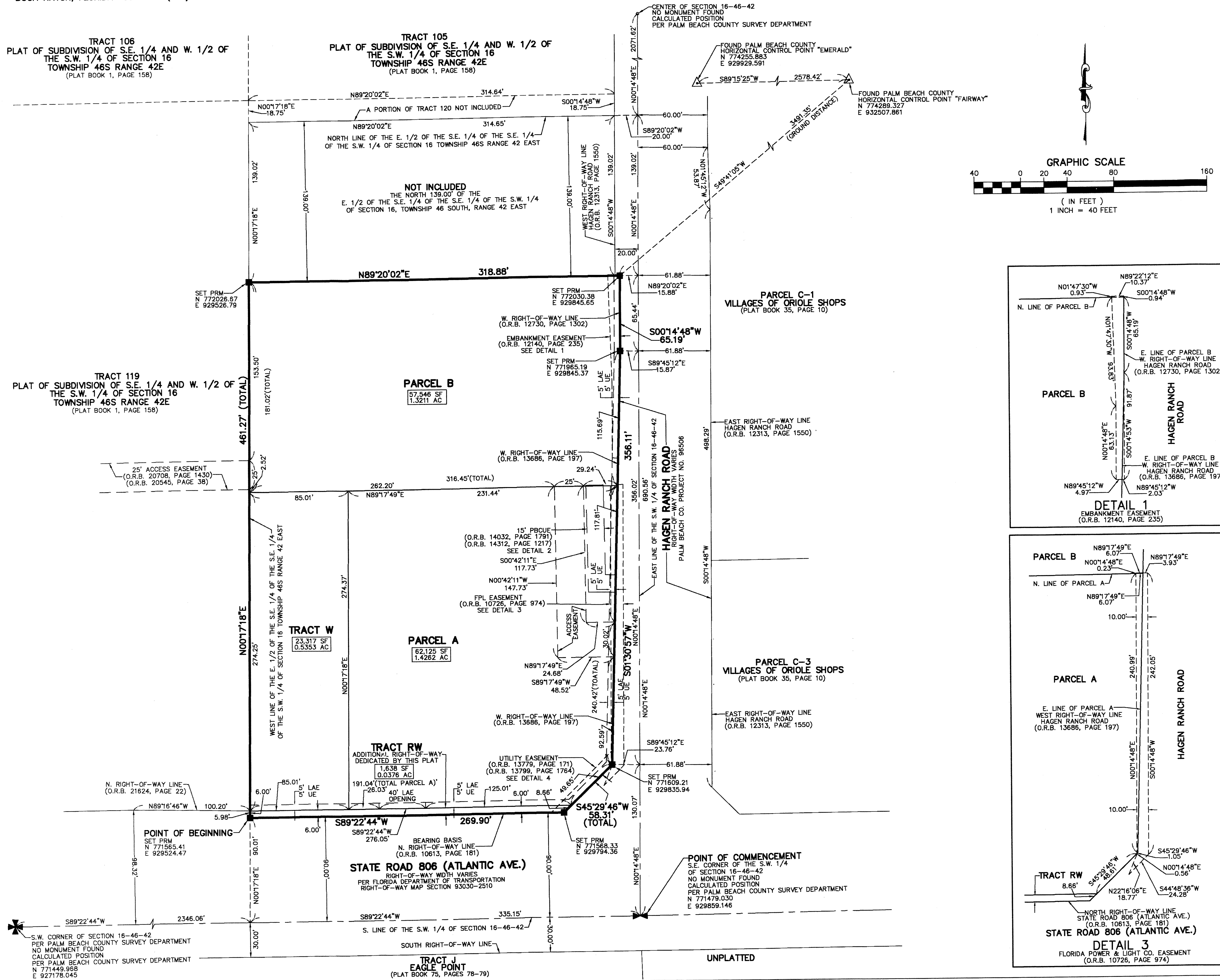


LEGEND/ABBREVIATIONS

- AC - ACRES
- FPL - FLORIDA POWER & LIGHT CO.
- LAE - LIMITED ACCESS EASEMENT
- LB - LICENSED BUSINESS
- O.R.B. - OFFICIAL RECORD BOOK
- PBCUE - PALM BEACH COUNTY UTILITY EASEMENT
- SF - SQUARE FEET
- U.E. - UTILITY EASEMENT
- PRM - DENOTES PERMANENT REFERENCE MONUMENT
- 4" x 4" x 24" CONCRETE MONUMENT STAMPED LB3591

NOTES

- COORDINATES, BEARINGS AND DISTANCES**
- COORDINATES SHOWN ARE GRID
- DATUM = NAD 83 1990 ADJUSTMENT
- ZONE = FLORIDA EAST
- LINEAR UNIT = U.S. SURVEY FEET
- COORDINATE SYSTEM 1983 STATE PLANE
- TRANSVERSE MERCATOR PROJECTION
- ALL DISTANCES ARE GROUND
- SCALE FACTOR = 1.000027065
- GROUND DISTANCE X SCALE FACTOR = GRID DISTANCE
- BEARINGS AS SHOWN HEREON ARE GRID DATUM,
- NAD 83 1990 ADJUSTMENT, FLORIDA EAST ZONE,
- RELATIVE TO A BEARING OF S.89°22'44"W ALONG THE
- NORTH RIGHT-OF-WAY LINE OF STATE ROAD 806 (ATLANTIC AVENUE),
- AS RECORDED IN OFFICIAL RECORD BOOK 10613, PAGE 181 OF THE
- PUBLIC RECORDS OF PALM BEACH COUNTY, FLORIDA.



S.W. CORNER OF SECTION 16-46-42
PER PALM BEACH COUNTY SURVEY DEPARTMENT
NO MONUMENT FOUND
CALCULATED POSITION
PER PALM BEACH COUNTY SURVEY DEPARTMENT
N 771449.958
E 927178.045

POINT OF COMMENCEMENT
S.E. CORNER OF THE S.W. 1/4
OF SECTION 16-46-42
NO MONUMENT FOUND
CALCULATED POSITION
PER PALM BEACH COUNTY SURVEY DEPARTMENT
N 77149.030
E 928859.146

STATE ROAD 806 (ATLANTIC AVE.)
RIGHT-OF-WAY WIDTH VARIES
PER FLORIDA DEPARTMENT OF TRANSPORTATION
RIGHT-OF-WAY MAP SECTION 93030-2510

TRACT J
EAGLE POINT
(PLAT BOOK 75, PAGES 78-79)

UNPLATTED