

84

WATER'S EDGE DERMATOLOGY, LLC PLAT

A PORTION OF LOT 2, LAKESHORE PLAZA (PLAT BOOK 74, PAGE 106)
LYING IN SECTION 8, TOWNSHIP 44 SOUTH, RANGE 43 EAST,
VILLAGE OF PALM SPRINGS, PALM BEACH COUNTY, FLORIDA

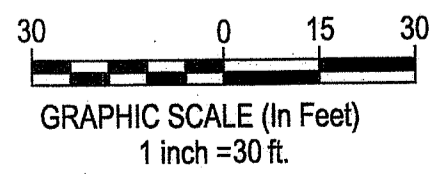
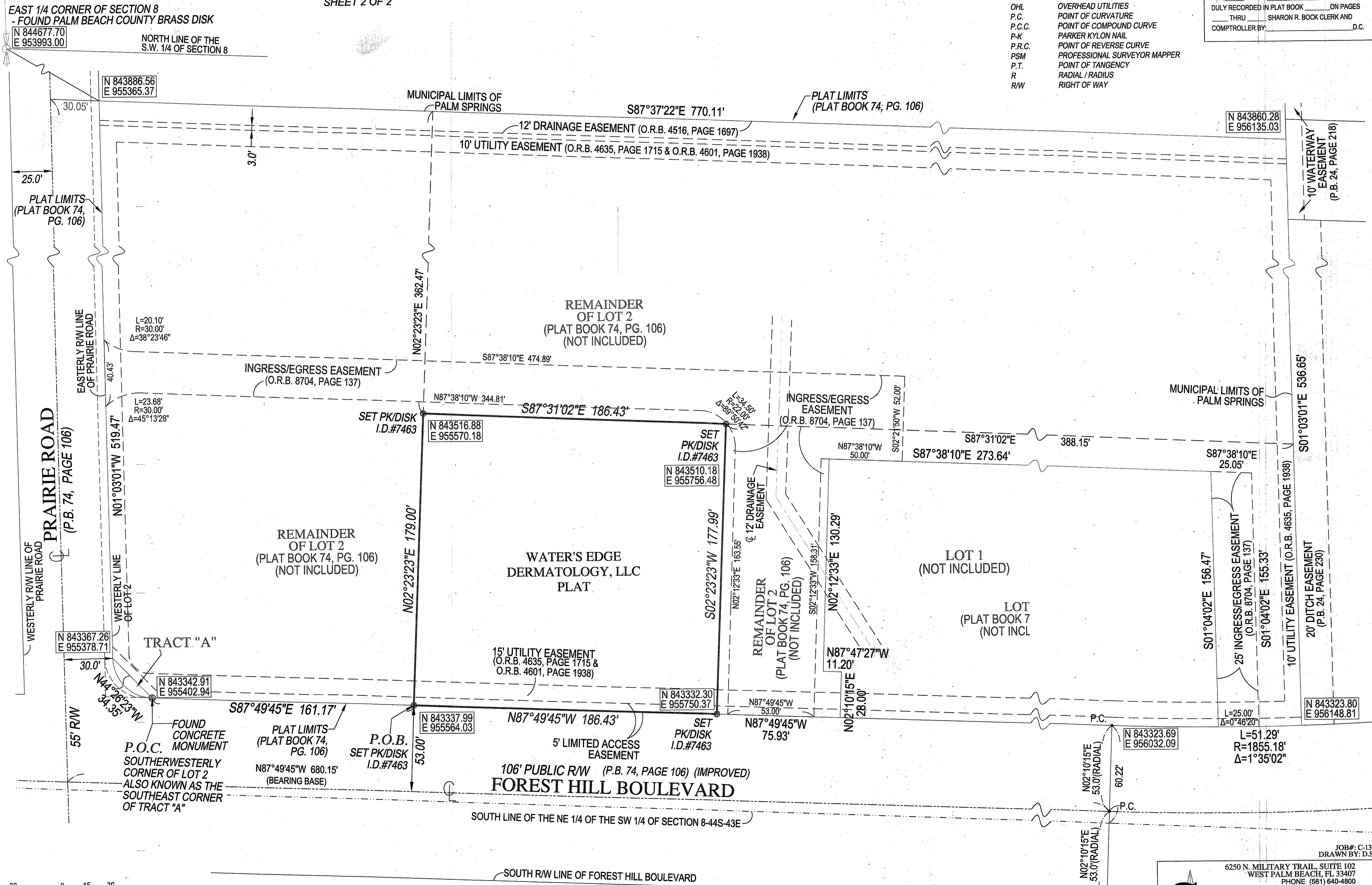
SHEET 2 OF 2

ABBREVIATION DESCRIPTION:

A/C	AIR CONDITIONER
C	CENTERLINE
Δ	CENTRAL / DELTA ANGLE
I.D.	IDENTIFICATION
L	LENGTH
LB	LICENSED BUSINESS
N.A.V.D.	NORTH AMERICAN VERTICAL DATUM
N.G.V.D.	NATIONAL GEODETIC VERTICAL DATUM
O.H.L.	OVERHEAD UTILITIES
P.C.	POINT OF CURVATURE
P.C.C.	POINT OF COMPOUND CURVE
P.K.	PARKER KYLON NAIL
P.R.C.	POINT OF REVERSE CURVE
PSM	PROFESSIONAL SURVEYOR MAPPER
P.T.	POINT OF TANGENCY
R	RADIAL / RADIUS
R/W	RIGHT OF WAY

COUNTY OF PALM BEACH
STATE OF FLORIDA

THIS PLAT WAS FILED FOR RECORD AT ___ M.
THIS ___ DAY OF ___ A.D. 2013 AND
DULY RECORDED IN PLAT BOOK ___ ON PAGES
THRU SHARON R. BOCK CLERK AND
COMPTROLLER BY: _____ D.C.



COMPASS SURVEYING
WWW.COMPASSSURVEYING.NET
JOB#: C-13833
DRAWN BY: D.S.D.
6250 N. MILITARY TRAIL, SUITE 102
WEST PALM BEACH, FL 33407
PHONE (661) 640-4800
FACSIMILE (661) 640-0576
LB #7463