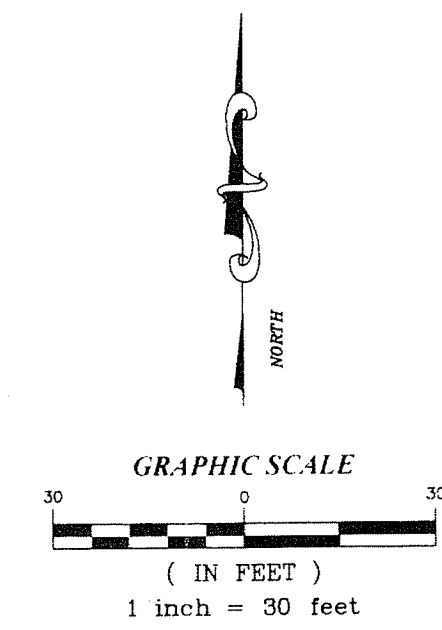


BRIGHT ACRES

BEING A REPLAT OF A PART OF TRACTS 77 AND 78, BLOCK 22 AND A PART OF TRACT 2, BLOCK 30, PALM BEACH FARMS CO. PLAT NO. 3, AS RECORDED IN PLAT BOOK 2, PAGES 45 THROUGH 54 OF THE PUBLIC RECORDS OF PALM BEACH COUNTY, FLORIDA. LYING WITHIN SECTION 27, TOWNSHIP 44 SOUTH, RANGE 42 EAST, CITY OF GREENACRES, PALM BEACH COUNTY, FLORIDA
SHEET 3 OF 3
OCTOBER, 2016



LEGEND

ABBREVIATIONS

CI IDENTIFICATION
 D.B. DEED BOOK
 FDOT FLORIDA DEPARTMENT OF TRANSPORTATION
 LB LICENSED BUSINESS NUMBER
 LS LICENSED SURVEYOR
 L.T. LINE TABLE DESIGNATION
 MOL MORE OR LESS
 O.R.B. OFFICIAL RECORDS BOOK
 PBCUE PALM BEACH COUNTY UTILITY EASEMENT
 PRM PERMANENT REFERENCE MONUMENT
 R.L.S. REGISTERED LAND SURVEYOR
 R/W RIGHT-OF-WAY
 S.F. SQUARE FEET

SYMBOLS

SMC - SET 4"x4" CONCRETE MONUMENT LB 7652 (PRM)
 SET 5/8" IRON ROD AND CAP LB 7652 (AT LOT CORNERS)
 FND - FOUND NAIL & DISK (IDENTIFICATION AS INDICATED)
 SND - SET NAIL AND DISK LB 7652 (PRM) (ALTERNATE MONUMENT)

PARCEL AREA TABLE

PARCEL	AREA (S.F.)
"A"	460 S.F.
"B"	14,017 S.F.
"C"	98,819 S.F.
"D"	16,627 S.F.
"E"	45,507 S.F.
TOTAL	175,530 S.F.

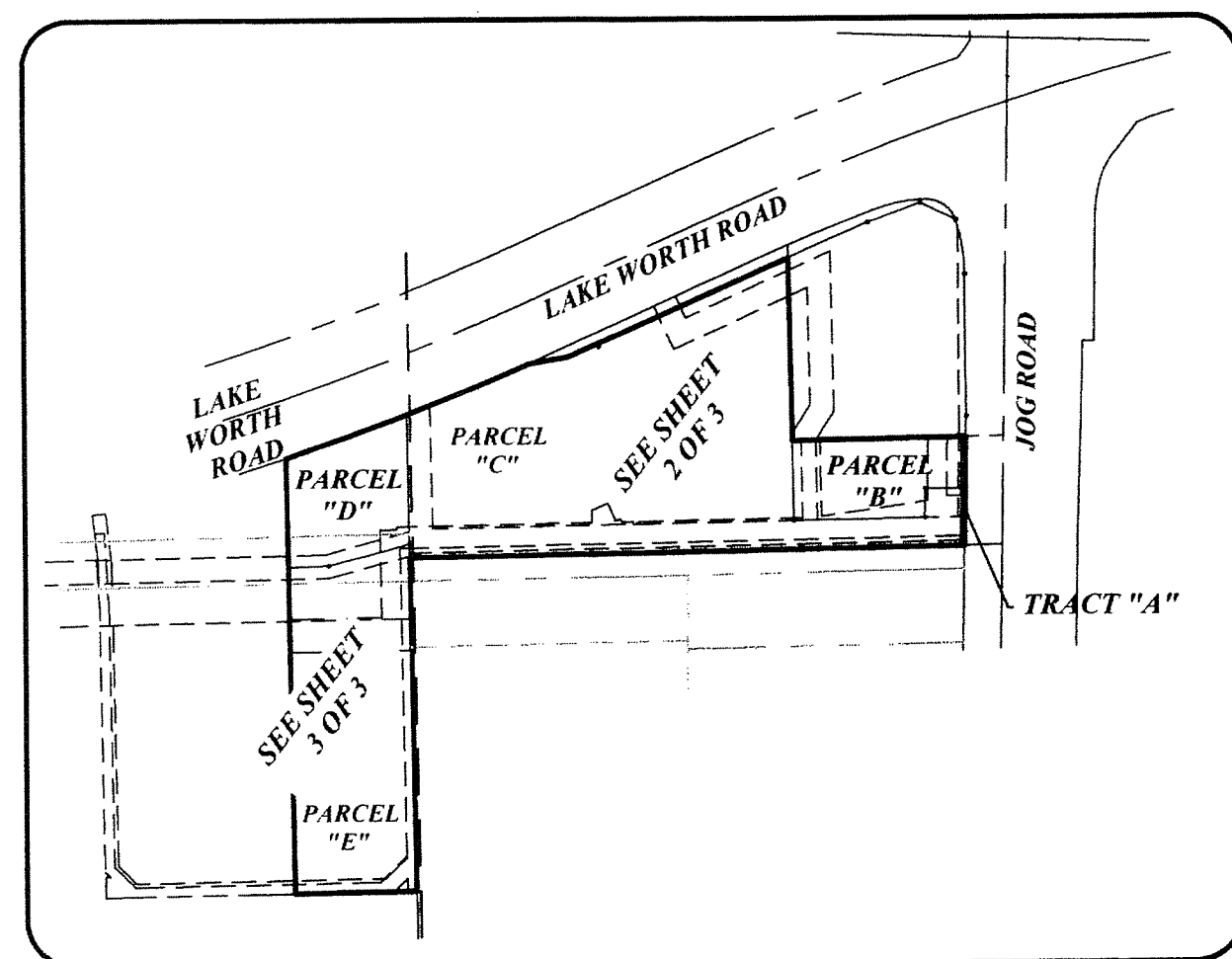
CURVE TABLE

CURVE	ARC LENGTH	RADIUS	CHORD BEARING	CHORD	DELTA
C1	305.36'	2924.93'	N68°37'34"E	305.32'	05°58'54"
C2	276.89'	2924.93'	N68°54'21"E	276.79'	05°25'26"
C3	136.27'	2924.93'	N70°17'01"E	136.25'	02°40'09"
C4	140.63'	2924.93'	N67°34'16"E	140.61'	02°45'17"

LINE TABLE

LINE	BEARING	LENGTH
L9	S00°56'15"E	14.34'

VICINITY MAP
 (NOT TO SCALE)



14.0' FLORIDA POWER & LIGHT COMPANY EASEMENT (O.R.B. 3728, PAGE 1544)

LAKE WORTH ROAD
 (R/W VARIES PER FDOT MAP SECTION 93610-2602)

R/W LINE PER O.R.B. 2584, PAGE 781 (PARCEL 75)

R/W LINE PER FDOT MAP SECTION 93610-2602

SND PRM LB-7652

PARCEL "D"
 (16,627 S.F., MOL)

S00°56'15"E 2.59'

SCIR 5/8" LB-7652

S88°58'18"W 17.33'

SCIR 5/8" LB-7652

S88°28'26"W 43.14'

SCIR 5/8" LB-7652

S89°11'07"W 98.39'

S00°56'15"E 93.02'

PBCUE

N89°11'07"E 129.00'

SCM

10.0' FLORIDA POWER & LIGHT COMPANY EASEMENT (O.R.B. 3568, PAGE 0542) (O.R.B. 3640, PAGE 0442)

10.0' FLORIDA POWER & LIGHT COMPANY EASEMENT (O.R.B. 3637, PAGE 734)

14.0' FLORIDA POWER & LIGHT COMPANY EASEMENT (O.R.B. 3728, PAGE 1544)

10.0' FLORIDA POWER & LIGHT COMPANY EASEMENT (O.R.B. 3637, PAGE 734)

PARCEL "E"
 (45,507 S.F., MOL)

N00°56'15"W 115.08'

460.39'

55.32'

35.00'

345.31'

254.98'

N00°56'15"W

10.0' FLORIDA POWER & LIGHT COMPANY EASEMENT (O.R.B. 3637, PAGE 734)

14.0' FLORIDA POWER & LIGHT COMPANY EASEMENT (O.R.B. 3728, PAGE 1544)

SCM

S00°56'15"E 136.89'

151.23'

352.82'

254.50'

EAST LINE OF S00°56'15"E TRACT 2, BLOCK 30

40.0' LAKE WORTH DRAINAGE DISTRICT DRAINAGE EASEMENT (O.R.B. 3693, PAGE 1144)

10.0' FLORIDA POWER & LIGHT COMPANY EASEMENT (O.R.B. 3637, PAGE 734)

14.0' FLORIDA POWER & LIGHT COMPANY EASEMENT (O.R.B. 3728, PAGE 1544)

(NOT INCLUDED)
 PART OF TRACT 2, BLOCK 30, PALM BEACH FARMS CO. PLAT NO. 3 (PLAT BOOK 2, PAGES 45 THROUGH 54 PER PALM BEACH COUNTY RECORDS)

OWNER: ARCP RL PORTFOLIO
 WIL, LLC
 PARCEL ID:
 00-42-43-27-05-030-0762

SOUTH LINE OF NORTH 1/2 OF TRACT 2, BLOCK 30

OWNER: FOUNTAINS COUNTRY CLUB, INC.
 PARCEL ID:
 00-42-44-27-04-000-0020

MATCH LINE - SEE SHEET 2 OF 3

102

COUNTY OF PALM BEACH }
 STATE OF FLORIDA } SS
 THIS PLAT WAS FILED FOR RECORD AT _____ THIS ____ DAY OF _____
 20____ AND DULY RECORDED IN PLAT BOOK No. _____ ON PAGE _____
 SHARON R. BOCK, CLERK AND COMPTROLLER
 BY _____