

HARBOR VILLAS

BEING A REPLAT OF A PORTION OF LOT 1 AND A PORTION OF LOT 2 OF PLAT OF SUBDIVISION GOVT. LOT 8-SECTION 4-T.24S.-R.43E.,
 AS RECORDED IN PLAT BOOK 18, PAGE 4 OF THE PUBLIC RECORDS OF PALM BEACH COUNTY, FLORIDA,
 LYING IN THE SOUTHEAST ONE-QUARTER OF SECTION 5 TOWNSHIP 42 SOUTH, RANGE 43 EAST, PALM BEACH COUNTY, FLORIDA
 THIS INSTRUMENT PREPARED BY
 DAVID P. LINDLEY

OF
CAULFIELD and WHEELER, INC.
 SURVEYORS - ENGINEERS - PLANNERS
 7900 GLADES ROAD, SUITE 100
 BOCA RATON, FLORIDA 33434 - (561)392-1991

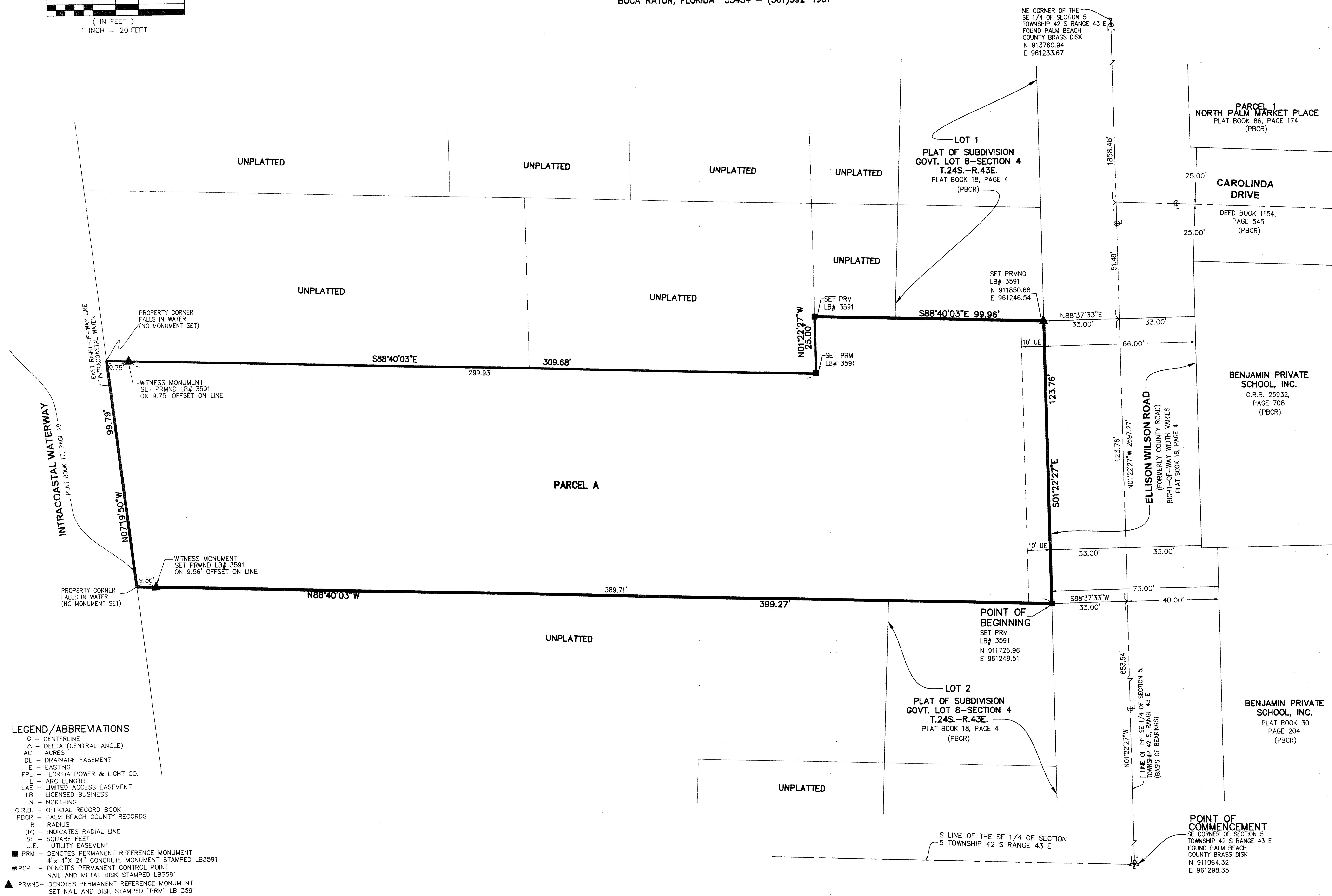
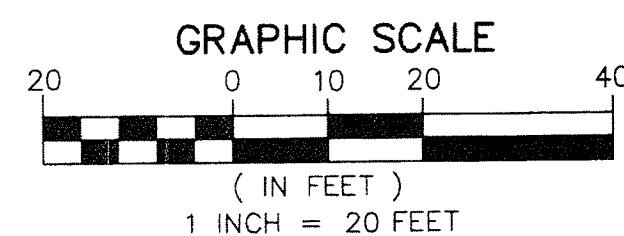
NOTES
COORDINATES, BEARINGS AND DISTANCES
 COORDINATES SHOWN ARE GRID
 DATUM = NAD 83 1990 ADJUSTMENT
 ZONE = FLORIDA EAST
 LINEAR UNIT = US SURVEY FEET
 COORDINATE SYSTEM 1983 STATE PLANE
 TRANSVERSE MERCATOR PROJECTION
 ALL DISTANCES ARE GROUND
 SCALE FACTOR = 1.0000479
 GROUND DISTANCE X SCALE FACTOR = GRID DISTANCE
 BEARINGS AS SHOWN HEREON ARE GRID DATUM,
 NAD 83 1990 ADJUSTMENT, FLORIDA EAST ZONE.

104

STATE OF FLORIDA
 COUNTY OF PALM BEACH
 THIS PLAT WAS FILED FOR
 RECORD AT _____ M.
 THIS _____ DAY OF _____
 A.D. 20____ AND DULY RECORDED
 IN PLAT BOOK _____ ON
 PAGES _____ AND _____

SHARON R. BOCK
 CLERK AND COMPTROLLER
 BY: _____
 DEPUTY CLERK

SHEET 2 OF 2



- LEGEND / ABBREVIATIONS**
- ⊕ - CENTERLINE
 - Δ - DELTA (CENTRAL ANGLE)
 - AC - ACRES
 - DE - DRAINAGE EASEMENT
 - E - EASTING
 - FPL - FLORIDA POWER & LIGHT CO.
 - L - ARC LENGTH
 - LAE - LIMITED ACCESS EASEMENT
 - LB - LICENSED BUSINESS
 - N - NORTHING
 - O.R.B. - OFFICIAL RECORD BOOK
 - PBCR - PALM BEACH COUNTY RECORDS
 - R - RADIUS
 - (R) - INDICATES RADIAL LINE
 - SF - SQUARE FEET
 - U.E. - UTILITY EASEMENT
 - PRM - DENOTES PERMANENT REFERENCE MONUMENT
4" x 4" x 24" CONCRETE MONUMENT STAMPED LB3591
 - PCP - DENOTES PERMANENT CONTROL POINT
NAIL AND METAL DISK STAMPED LB3591
 - ▲ PRMND - DENOTES PERMANENT REFERENCE MONUMENT
SET NAIL AND DISK STAMPED "PRM" LB 3591